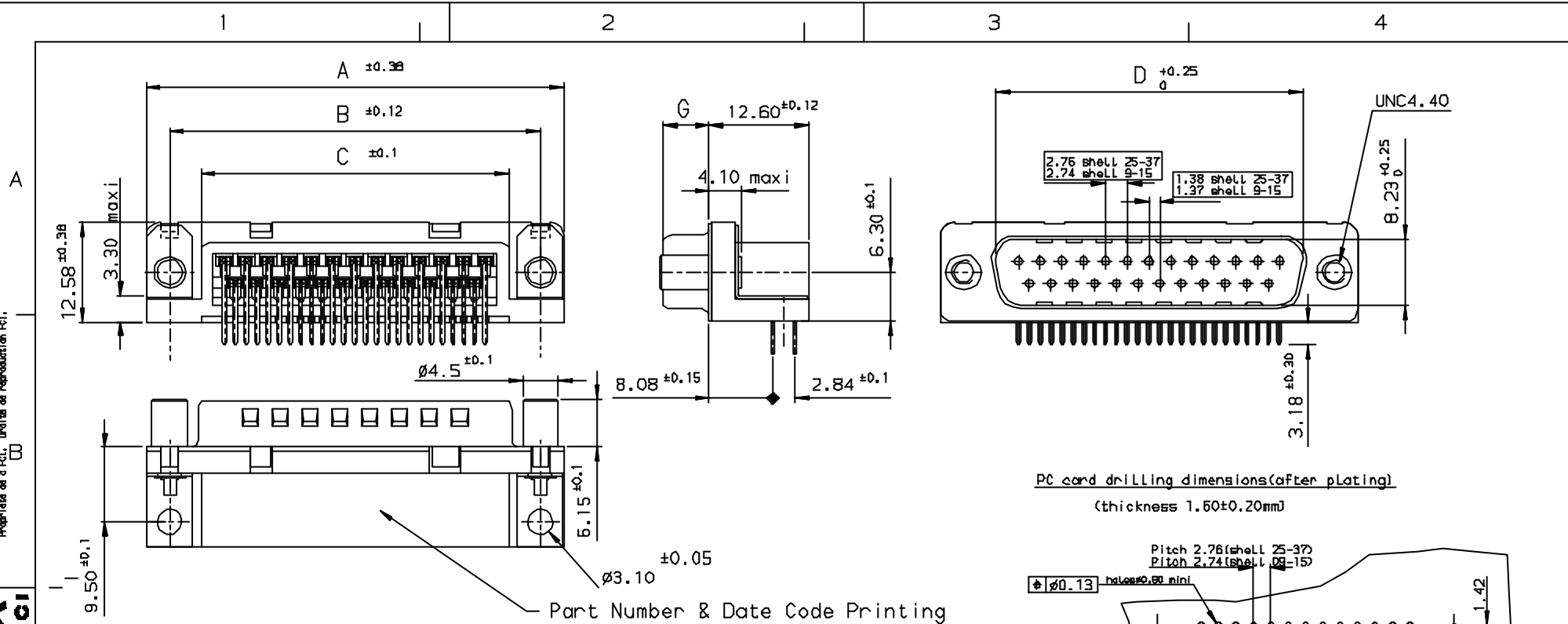


Tous droits strictement réservés. Reproduction ou utilisation sans autorisation est formellement interdite.  
 Property of FCI. Droits de reproduction réservés.

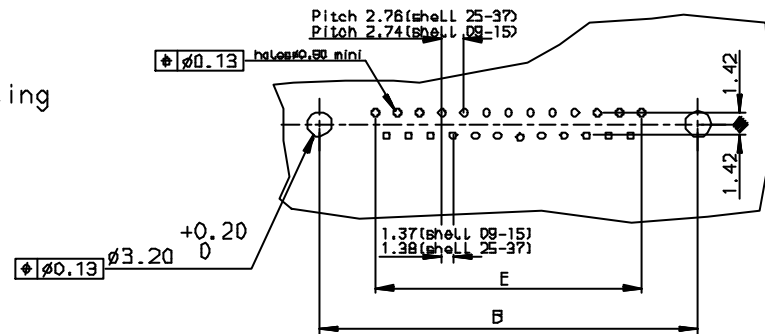
**FCI**

C

All rights strictly reserved. Reproduction or use in third parties in any form without the prior written authorization of FCI is strictly prohibited.  
 Property of FCI. Copyright FCI.



PC card drilling dimensions (after plating)  
 (thickness 1.50±0.20mm)



SHELL	A±0.38	B±0.12	C±0.10	D±0.25	E±0.07	G±0.25	PART NUMBER
09	30.81	24.99	16.96	16.79	10.96	5.90	D09P33E6UV00**
15	39.14	33.32	25.18	25.12	19.18	5.90	D15P33E6UV00**
25	53.03	47.04	39.12	38.84	33.12	5.70	D25P33E6UV00**
37	69.32	63.50	55.68	55.30	49.68	5.70	D37P33E6UV00**

Part Number & Date Code Printing

LF FOR LEAD FREE

**REQUIREMENTS**

**Technical characteristics:**  
 Shell: steel tin plated  
 Insulators: self-extinguishing black polyester, UL 94V0  
 Contacts size 20, brass, gold 0.75µ on mating end, bright tin on termination end over nickel on entire contact  
 Cycles < 500

Metal plate for electrical continuity: brass, tin plated  
 ScrewLocks: brass, tin plated

**Electrical characteristics:**  
 max. current rating: 5A  
 Test voltage: 1000V  
 Rated voltage: 300V  
 Contact resistance: < 15mΩ  
 Shell resistance: < 5mΩ  
 Insulation resistance: > 5000MΩ

**Climatic characteristics:**  
 Operating temperature range: -55°C +125°C

**Dimensions:**  
 In accordance with MIL-C-24308

FOR ROHS DETAILS REFER DWG. NO: C01-8646-0000

			Tolerance	Projection	MM	
			✓ LINEAR ±0.1		← →	
			ANGULAR ±1°			
Dr	JOHN SLEEDA	7/1/93	Product Family	D-SUB	Size	Scale
Eng	GEORGE VJ	7/1/93	Spec ref		A3	
Chr	GEORGE VJ	27/7/05	Material		ECN	
Appr	K Somasundaram	27/7/05				
<b>FCI</b>			Title	MALE CONNECT. DELTA D right angle with screwLock & metal plate		Rev.
			Dwg no	C01-8646-0153		b
			Catalog no	DELTA-D	CUSTOMER COPY	Sheet 1 of 1

INDEX	DATE	REVISION DESCRIPTION
b	27/7/05	LEAD FREE DETAILS ADDED

Utr	Eon no	Dr	date
b	105-0124	js	27/7/05