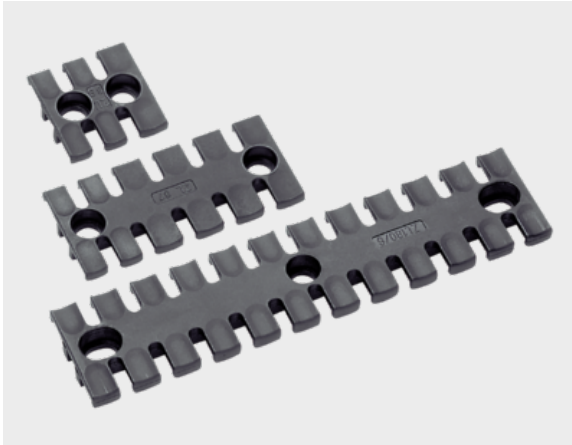




## Strain relief type ZL

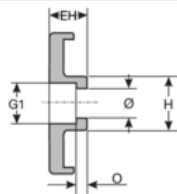
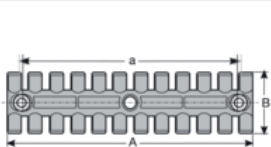


### Product information

The ZL strain relief plate may be used wherever the strain of cables, hoses, cords, wires or conduits must be relieved or they are to be routed in a secure, easy and cost-effective way. The insertion of the ELB insert bushing stops the cold extrusion characteristic of plastic from affecting the secure fixing of the plate. The DH spacer sleeve is required for two-tier mounting.

- Approved for railway technology (EN 45545-2)

### Information, conformities and approvals

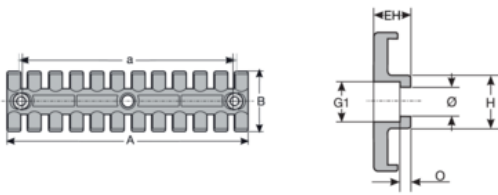


Article	Order No.	Color	No. Cables	PU pcs.
Ø screw holes: 9mm				
ZL 04	87701010	Black	12	1
ZL 05	87701012	Black	15	1
ZL 39	87701014	Black	3	1
ZL 60	87701016	Black	4	1
ZL 70	87701017	Black	5	1
ZL 80	87701015	Black	6	1
ZL 87/68	87701018	Black	6	1
ZL 87/50	87701019	Black	6	1
ZL 103	87701020	Black	7	1
ZL 121	87701022	Black	8	1
ZL 140	87701024	Black	9	1
ZL 180/6	87701026	Black	12	1



## Strain relief type ZL

Article	Order No.	Color	No. Cables	PU pcs.
ZL 180/8	87701027	Black	12	1
<b>Ø screw holes: 5mm</b>				
ZL 39/5	87701070	Black	3	1
ZL 60/5	87701072	Black	4	1
ZL 87/68/5	87701074	Black	6	1
ZL 103/5	87701076	Black	7	1
ZL 140/5	87701078	Black	9	1



Article	Order No.	A mm	a mm	B mm	EH mm	G1 mm	H mm	Ø mm	Ø mm
ZL 04	87701010	95	74.5	35	9.2	8.5	9	3.1	5.5
ZL 05	87701012	119	108	35	9.2	8.5	9	3.1	5.5
ZL 39	87701014	38.5	19.5	40	10	12	14	3.1	9
ZL 60	87701016	59.5	43.5	40	10	12	14	3.1	9
ZL 70	87701017	69.5	43.5	40	10	12	14	3.1	9
ZL 80	87701015	79.5	68	40	10	12	14	3.1	9
ZL 87/68	87701018	86.5	68	40	10	12	14	3.1	9
ZL 87/50	87701019	86.5	50	40	10	12	14	3.1	9
ZL 103	87701020	102.5	84	40	10	12	14	3.1	9
ZL 121	87701022	121	102.5	40	10	12	14	3.1	9
ZL 140	87701024	139.5	121	40	10	12	14	3.1	9
ZL 180/6	87701026	180	157	42	11.5	12	16	3.1	9



## Strain relief type ZL

Article	Order No.	A mm	a mm	B mm	EH mm	G1 mm	H mm	O mm	Ø mm
ZL 180/8	87701027	180	157	42	11.5	13.4	16	3.1	11
Ø screw holes: 5mm									
ZL 39/5	87701070	38.5	19.5	40	10	12	14	3.1	5
ZL 60/5	87701072	59.5	43.5	40	10	12	14	3.1	5
ZL 87/68/5	87701074	86.5	68	40	10	12	14	3.1	5
ZL 103/5	87701076	102.5	87	40	10	12	14	3.1	5
ZL 140/5	87701078	139.5	121	40	10	12	14	3.1	5

### Material properties



Bar: Polyamide 6.6 Polyamide 6.6

### Thermal properties



Temperature / temperature range

-45 °C – 125 °C

### Fire properties



Fire classification

V0



Fire properties as per EN 45545-2

C.I.T. R22 / R23 HL3 :0,44 EN 17084  
Ds (max.) R22 / R23 HL3 :≥ 32 % ISO 4589-2  
LOI R22 / R23 HL3 :59 ISO 5659-2

### Technical information



Halogen-free



LABS free



According to ISO 4892-2



## Strain relief type ZL

### Assembly method



### Strain relief



### Conformity



RoHS (EC Directive 2011/65/EU)

### Approvals and operating permits



GL approval



EU railway approval

### Classification

ETIM 9: EC000322  
ECLASS 14: 27400604  
UNSPSC 26.0801: 39121719

### General information



Made in Germany