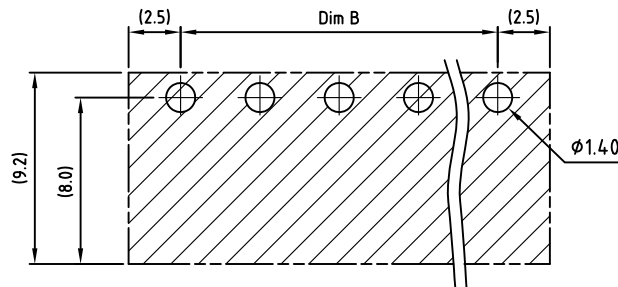
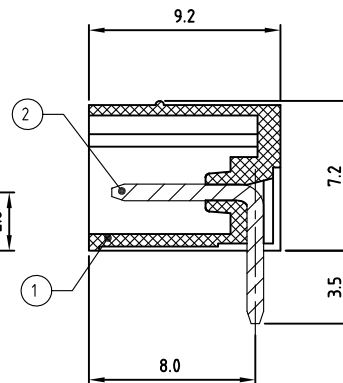
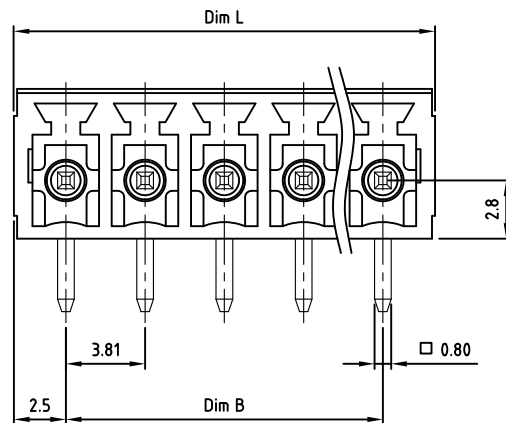
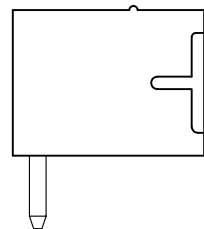
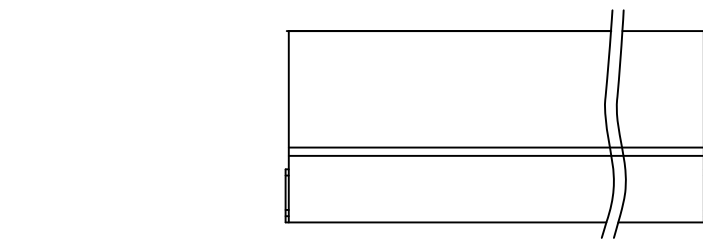
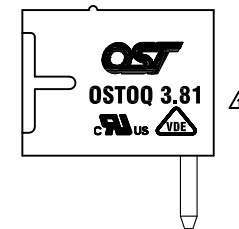


Transfer or duplication of this document as well as the utilisation or communication of its content are not permitted unless express consent is granted. Violations give rise to claims for damages. All rights reserved in case of patent, utility model or design patent registrations.



PCB LAYOUT



Part No.:

OSTOQXX3251

No. of Poles
02 2 Poles
03 3 Poles
...
24 24 Poles

COLOR
0: Black
2: Red
3: Orange
4: Yellow
5: Green (Standard)
6: Blue
8: Grey

Nonstandard colors
Mins could apply

B	Added is VDE Spec.	WF.Z	1/9'24
REV	DESCRIPTION	CHK.	DATE

2	Pin	Copper Alloy	Tin plated	1xN
1	Body	PA66-30%GF UL94V-0		1
ITEM	NAME OF PART	MATERIAL	NOTES	Q"TY
DWG.	DATE	UNITS:	MM	SHEET: 1 OF 1
CHK.	DATE	SCALE:	NONE 4:1 (:)	REV.: A
APP.	DATE	TITLE:	OSTOQ SERIES 3.81MM	X. ±0.50
			RIGHT ANGLE TRIANGLE KEY LOCK	X.XX ±0.30
		PART NO.	OSTOQXX3251	X° ±1°
		DWG NO.	OSTOQXX3251.DWG	



ON-SHORE TECHNOLOGY, INC.