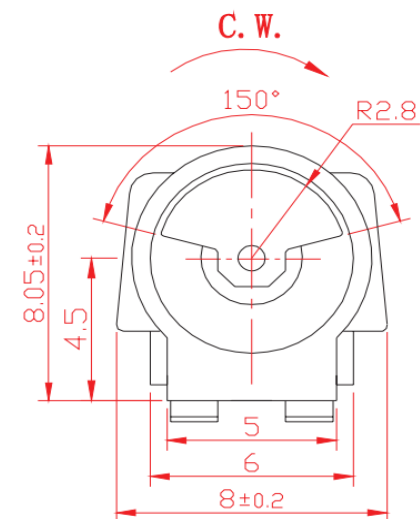


- 技术要求/Technical Requirements:
1. 额定电压/Rated voltage: 1.3V
 2. 额定电流/Rated current: 90mA Max
 3. 额定转速/Rated speed: 8500 ± 2000rpm
 4. 堵转电流/Stall current: 145mA Max
 5. 端子阻抗/Terminal resistance: 11Ω(±20%)
 6. 起动电压/Starting voltage: 0.75V Max
 7. 轴向间隙/Shaft end play: 0.1~0.3mm
 8. 所有尺寸为A向压紧后的尺寸(不包括轴向间隙).
Overall length is measured after counterweight being pressed against body in direction A. (Shaft end play is not included.)
 9. 未注线性公差为/Unmarked tolerance: ±0.1mm



INEED ELECTRONICS (HK) LTD

IND-YZ0610H-2830-1.3V

标记处数分区更改文件号签名日期

设计标准化

校对

审核

工艺批准

阶段标记重量比例

5:1

共页第页

外形图