

Onanon's *MagConnect® | Echo* is performance engineered to be the most intuitive interconnect in the world. Its unique magnetic safety latch feature is ideal for medical applications, where time, precision, and quality are most critical. Additional suitable markets include but are not limited to the automotive, aerospace and industrial industries. MagConnect® series has been used in applications with low & high voltages, sensitive EMI, shock & vibration environments, and integration of intelligent electronics.

- **2 to 20 pin capacity**
- **Intuitive and self-mating**
- **Magnetic safety de-latching**
- **Customizable for reusable or single use applications**
- **Easily add components such as EEPROMs, resistors and capacitors**
- **EMI/RFI Safe**
- **Low (<12v) & High (>5000v) Voltage Safe**
- **Rugged use in outdoor wearables**
- **VF/HF/RF Safe**



Specifications

Mechanical

Mating Type: Magnetic
Mating Cycles: 10k Min
Mating Forces:
 Insertion: Magnetic
 Removal: 3.5 lbf Min

Electrical

Operating Voltage:
 1kVAC and 1.5kVDC
Operating Current: 3A

Environmental

Sterilizable: Gamma, EtO
Chemical Resistance: Common cleaning solvents
Finger Safety: IEC 60601-1
Storage & Operating Temp:
 0-150°C

Compatibility

Contacts: 20 pins
Plug Cable Assembly
 Accepted Wire Gauges: 26-50 AWG
 Cable Jacket OD: 0.286" Max
 Contact Termination: Solder
In-Line Receptacle Cable Assembly
 Accepted Wire Gauges: 26-50 AWG
 Cable Jacket OD: 0.286" Max
 Contact Termination: Solder



Self-Mating

Intuitive tear drop shape allows for easy alignment and mating



Sterilizable

Chemical-resistant materials are easy to clean and withstand repeated wipe-downs using common hospital disinfectants

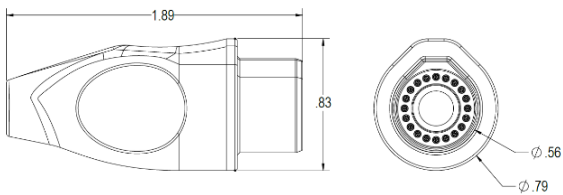


Magnetic Safety Latch

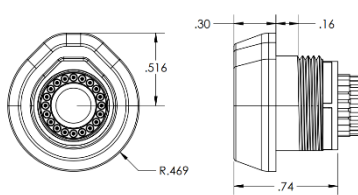
Customizable low to high retention force to meet desired need for a reliable, safe connection

Dimensions

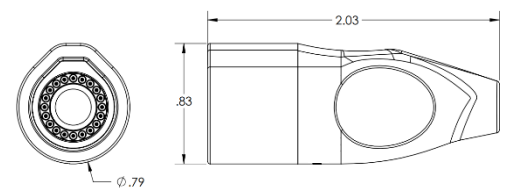
Plug



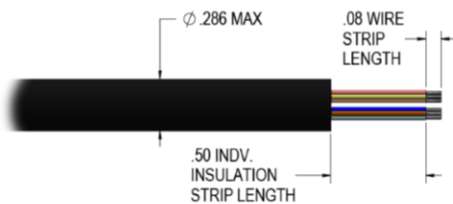
Panel Mount Receptacle



Inline Receptacle

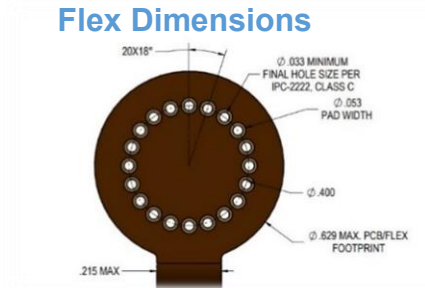


Recommended Cable Specifications

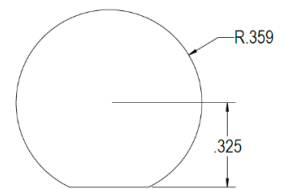


Units are in inches
Contact Sales for unspecified dimensions

Recommended PCB or Flex Dimensions



Recommended Panel Cutout



Materials & Assembly

Plug Assembly

Plug Housing: Thermoplastic Polyester
Retaining Cap: Thermoplastic Polyester
Pins: Gold Plated Brass Alloy
Magnet: Nickel Plated Neodymium
Slip-On Boot: Thermoplastic Polyurethane

Required Assembly: Assemble connector body after terminating wires

Panel Mount Receptacle

Insulator Insert: Thermoplastic Polyester
Metal Shell: Chromium Plated Brass Alloy
Pins: Gold Plated Brass Alloy
Magnet: Nickel Plated Neodymium

Required Assembly: Solder a PCB or flex assembly

Inline Receptacle Assembly

Plug Housing: Thermoplastic Polyester
Retaining Cap: Thermoplastic Polyester
Pins: Gold Plated Brass Alloy
Magnet: Nickel Plated Neodymium
Slip-On Boot: Thermoplastic Polyurethane

Required Assembly: Assemble connector body after terminating wires

Onanon Connector Series

MagConnect® | Echo



Plug

234-A001- **XXX** - **XXXX** - **X**

NO. OF CONTACTS

06, 10, 14, 18, 20

CONTACT TYPE

S – SOLDER CUP
R – ROBOSOLDER®

PLUG COLOR

B – BLACK ; W – WHITE

BOOT ID

280 – Ø0.280" ; 102 – Ø0.102"

BOOT COLOR

B – BLACK N – GREEN
G – GREY W – WHITE
R – RED U – BLUE
Y – YELLOW



In-Line Receptacle

234-A005- **XXX** - **XXXX** - **X**

NO. OF CONTACTS

06, 10, 14, 18, 20

CONTACT TYPE

S – SOLDER CUP
R – ROBOSOLDER®

PLUG COLOR

B – BLACK ; W – WHITE

BOOT ID

280 – Ø0.280" ; 102 – Ø0.102"

BOOT COLOR

B – BLACK N – GREEN
G – GREY W – WHITE
R – RED U – BLUE
Y – YELLOW



Panel Mount Receptacle

234-A002- **XXX** - **X**

NO. OF CONTACTS

06, 10, 14, 18, 20

CONTACT TYPE

S – SOLDER CUP
R – ROBOSOLDER®

BOOT COLOR

B – BLACK N – GREEN
G – GREY W – WHITE
R – RED U – BLUE
Y – YELLOW

Custom Options Available:

Reach out to our sales team about laser-engraved logos, personalized color options, high volume orders, and end-to-end custom cable assemblies including our integrated SmartConnect™ capabilities.