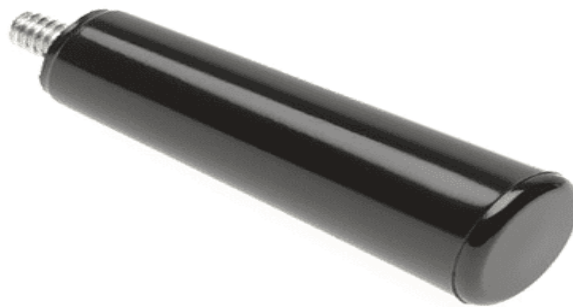




TAPERED HANDLE, 2 13/20", BLACK, MODEL 0692AT

MODEL#0692AT



Highlights of the 2 13/20" Black Tapered Handle

- Tapered handles are available in phenolic material.
- Perfect for the industrial machinery, medical, general equipment and other industrial applications.
- Handles can be decorated or customized to your specific need.
- Please note: Not all variations available are listed below. Please [contact customer service](#) to inquire about all available options.

The 0692AT tapered handle is made from high-quality thermoset material, ensuring excellent durability and resistance to heat and chemicals. Available in various mounting diameters and types, this handle offers flexibility to fit different applications. The classic black finish gives it a sleek and professional look, making it ideal for wide variety of projects. Its ergonomic design provides a comfortable and secure grip, enhancing user experience in both industrial and commercial settings. This handle is particularly suitable

for use in electronics, medical devices, and industrial equipment, combining functionality with aesthetic appeal.

Diameter: 0.875

Height: 2.65

Material: Thermoset

Mounting Diameter: ¼-20

Mounting Type: Female Insert

Thread Length depth: 0.375