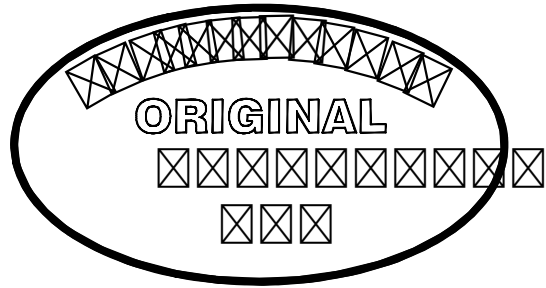


安费诺精密连接器(深圳)有限公司
Amphenol PCD Shenzhen

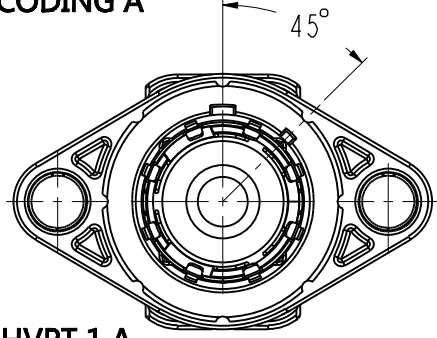
受 控 文 件

2020年3月4日

REV	ECN	DESCRIPTION	DATE	MODIFIED
3		UPDATE TECHNICAL DATA	2019.04.23	
4		ADD NEW SPECIFICATIONS	2019.8.12	
5	R4118N	Correct drawing size	2020.2.21	

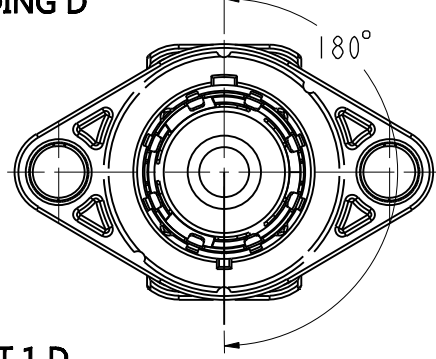


CODING A



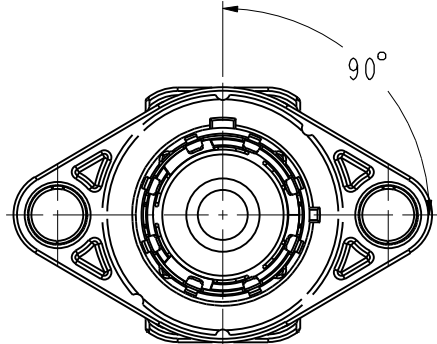
HVPT 1 A

CODING D



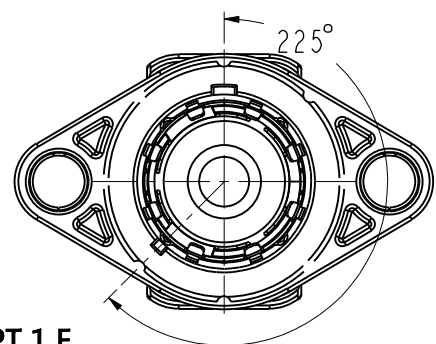
HVPT 1 D

CODING B



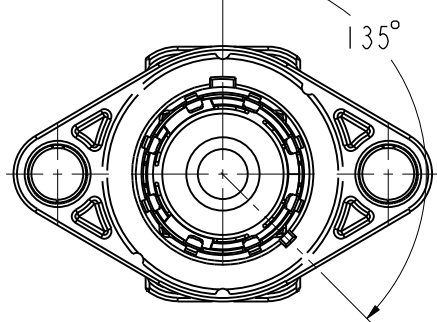
HVPT 1 B

CODING E

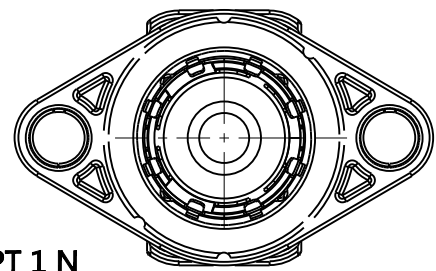


HVPT 1 E

CODING C

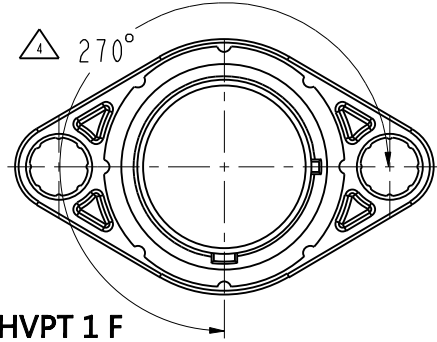


HVPT 1 C

CODING N
(NO CODING)

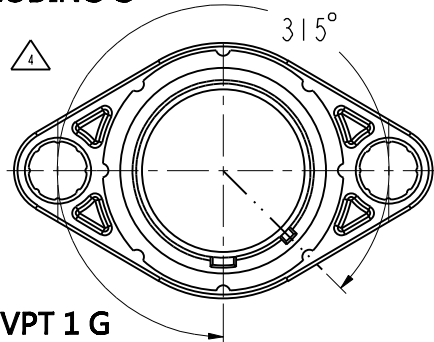
HVPT 1 N

CODING F

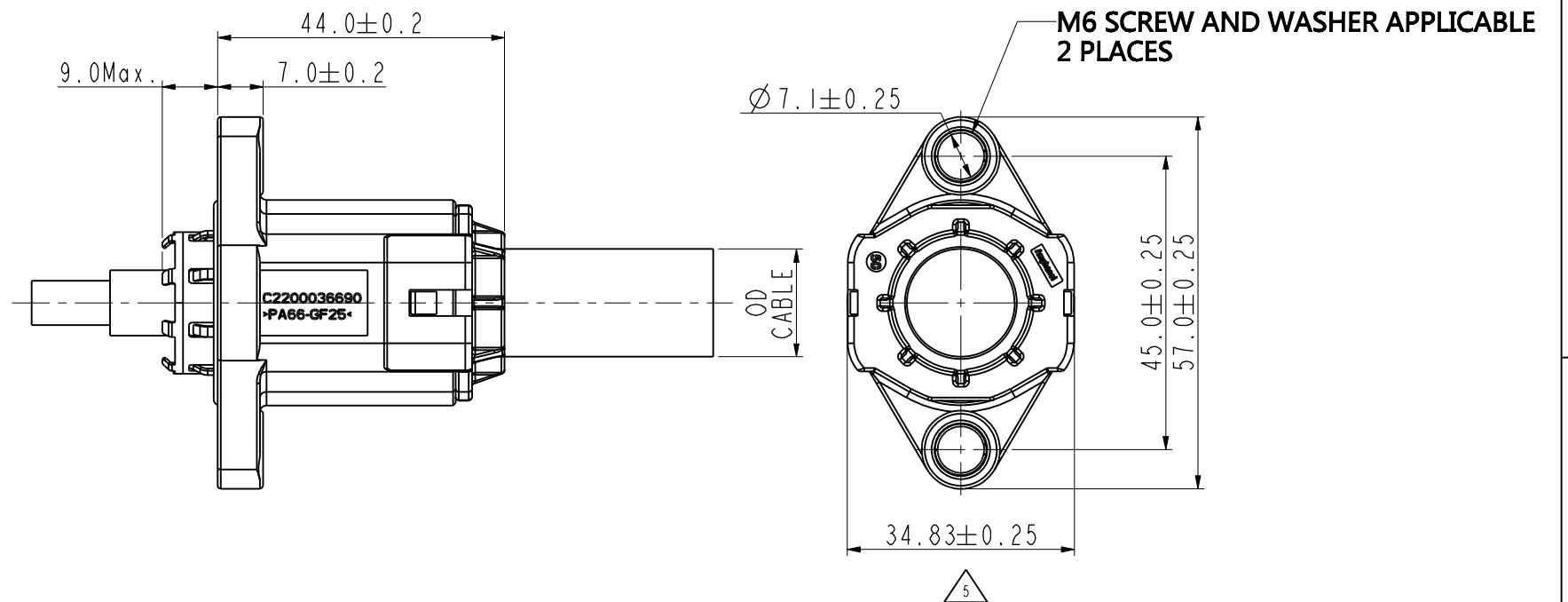


HVPT 1 F

CODING G



HVPT 1 G

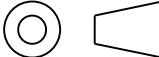


HVPT 1 X XX

A: CODING A
B: CODING B
C: CODING C
D: CODING D
E: CODING E
F: CODING F
G: CODING G
N: CODING N

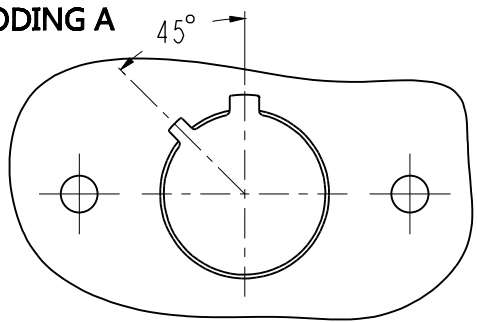
25: FOR 25mm² Shielded WIRE;OD=11.9±0.4mm
35: FOR 35mm² Shielded WIRE;OD=14.2±0.4mm
50: FOR 50mm² Shielded WIRE;OD=16.5±0.4mm
70: FOR 70mm² Shielded WIRE;OD=19.0±0.4mm

TECHNICAL DATA	
OPERATING TEMPERATURE	-40 ~ 125 °C
SHIELDING	YES
WATERPROOF(MATED CONDITION)	IP67&IP69K
AMBIENT TEMPERATURE	-40 ~ 70 °C

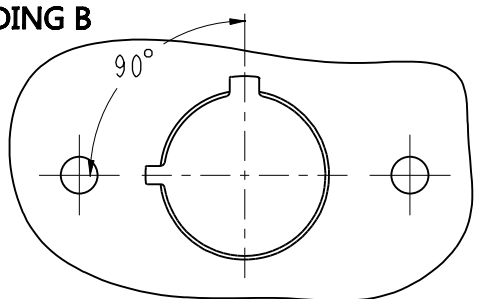
DIMENSIONS	TOLERANCES	PROJECTION	TITLE						
ANSI Y14.5M UNITS: MM Pro/E FILE	.X ±0.5 .XX ±0.05 ANGLES ±0.5°		ENGR			HVPT 1XXX PASS-THRU CABLE SEAL GLAND			
			12-Aug-19						
ORIGINAL	THIS DOCUMENT CONTAINS PROPRIETARY INFORMATION WHICH IS THE CONFIDENTIAL PROPERTY OF AMPHENOL PCD SHENZHEN		CHKD			SIZE	DWG NO.		REV
						A3	C-HVPT1XXX		5
			APPD			CODE: 58982		SCALE: 1:2	SHEET 1 OF 3

C-HVPT1XXX

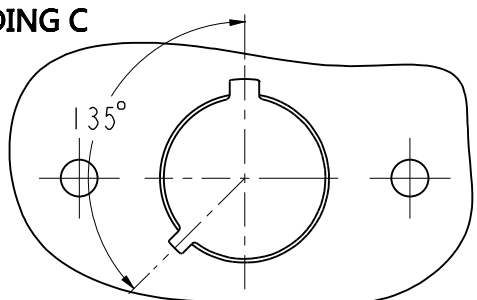
CODING A



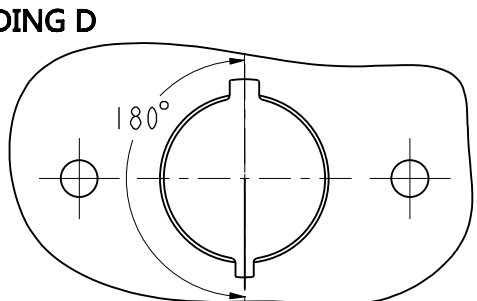
CODING B



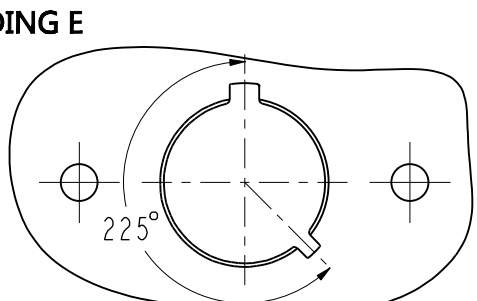
CODING C



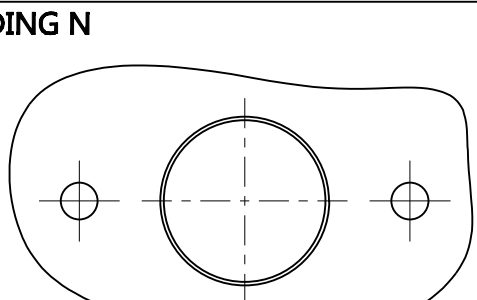
CODING D



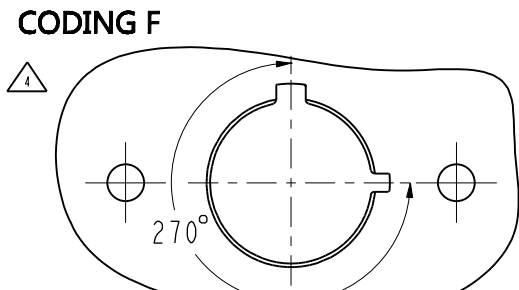
CODING E



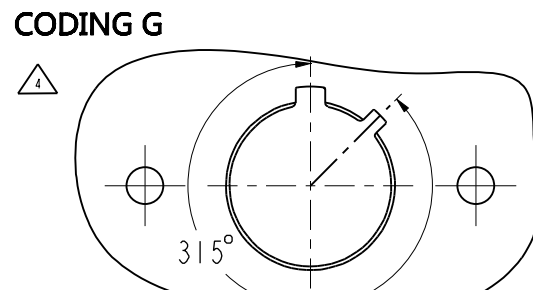
CODING N



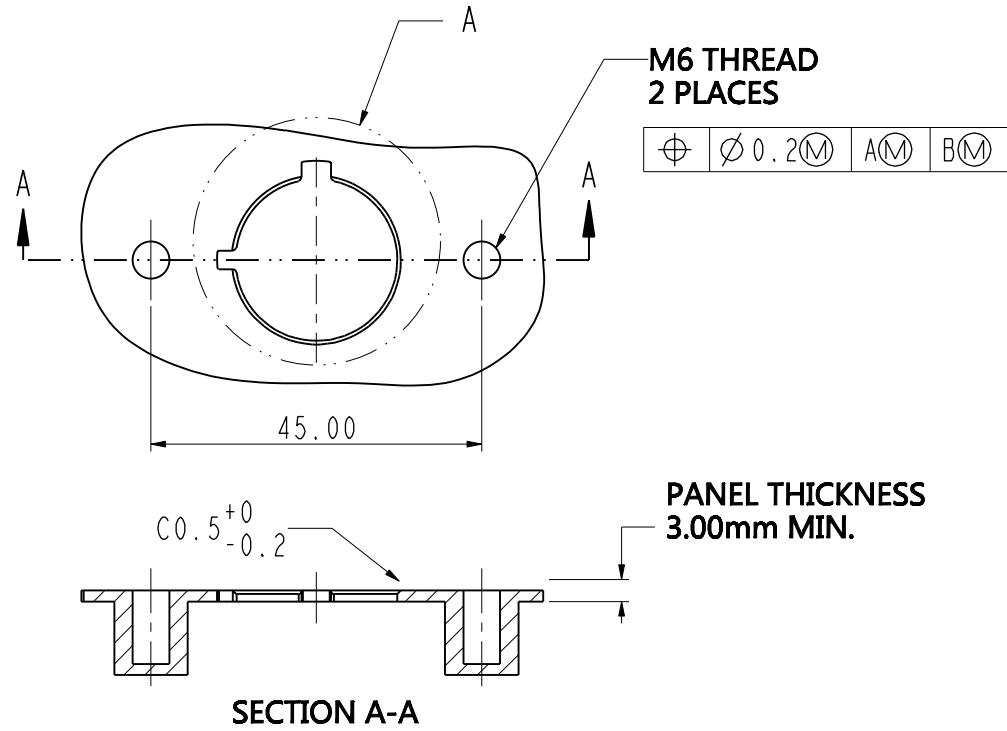
CODING F



CODING G

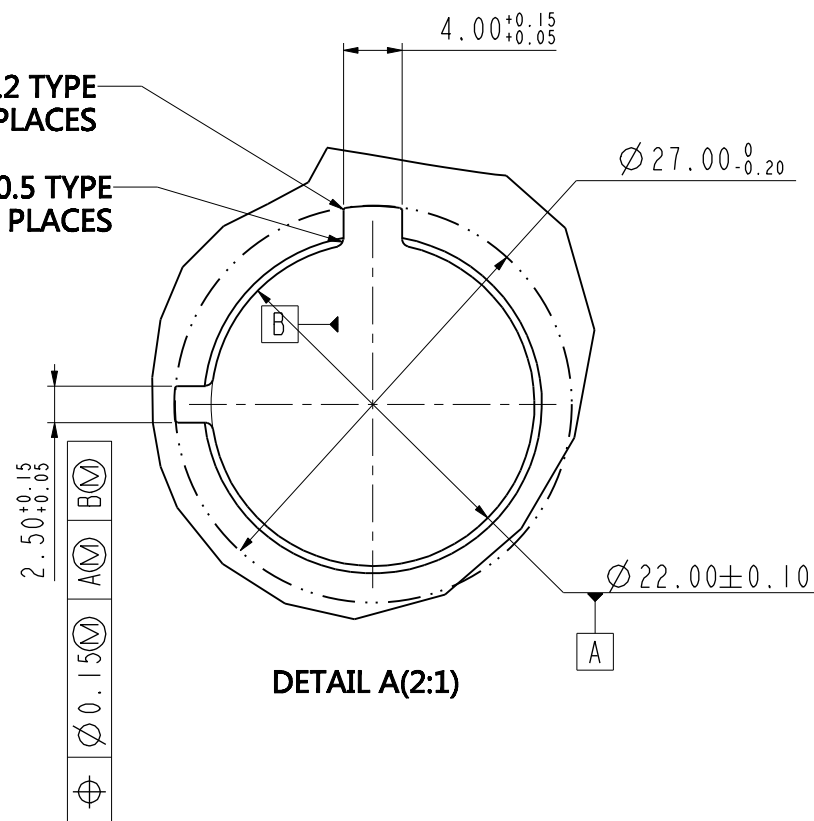


C-HVPT1XXX



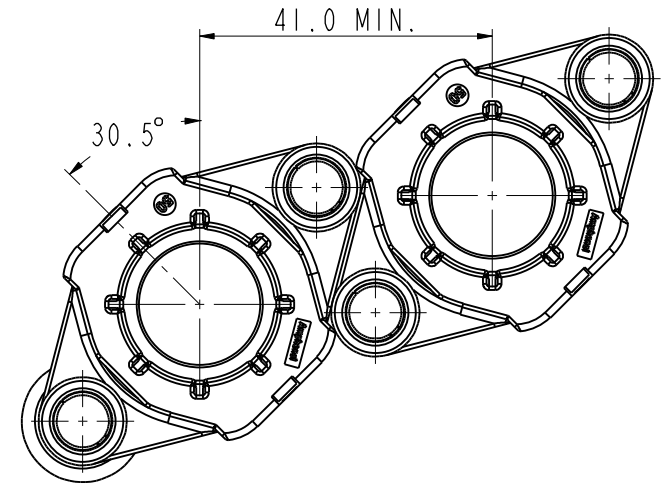
R0.2 TYPE
4 PLACES

R0.5 TYPE
4 PLACES

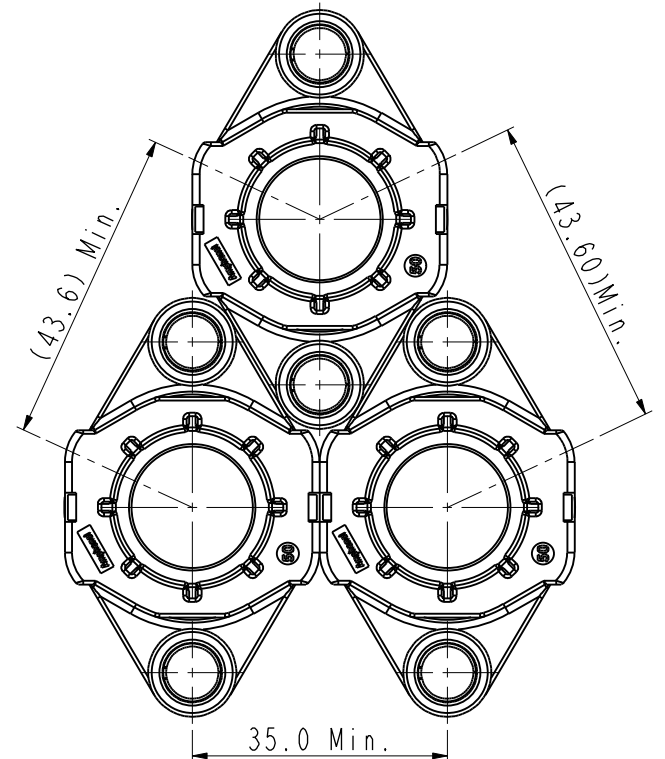


安费诺精密连接器(深圳)有限公司
Amphenol PCD Shenzhen

受 控 文 件
2020年3月4日



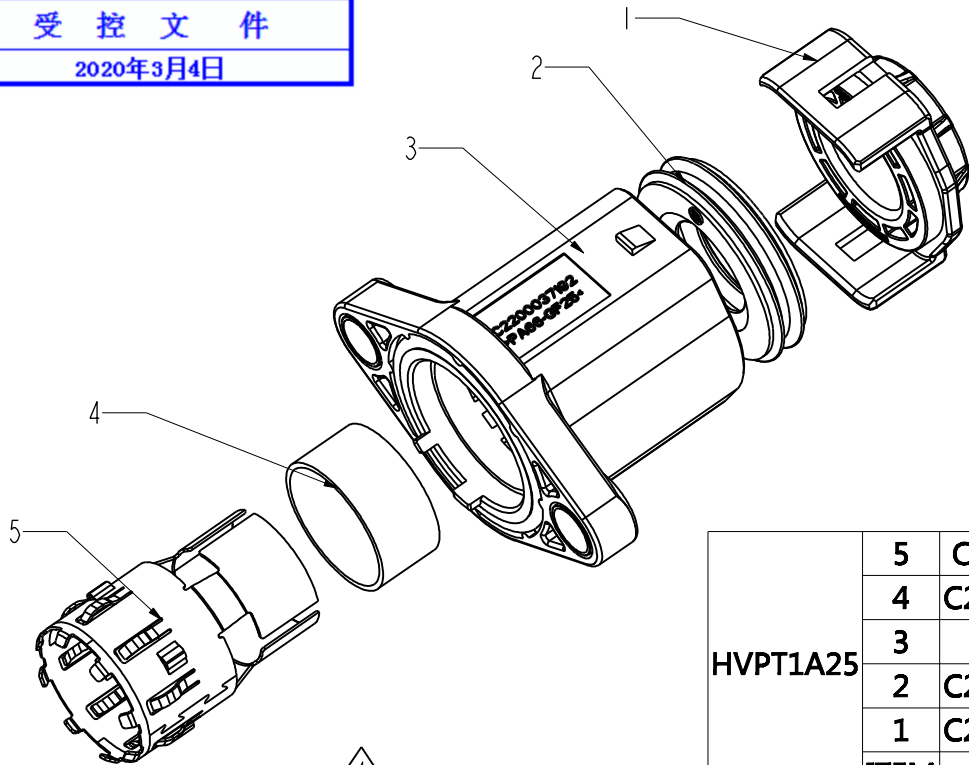
RECOMMENDED LAYOUT
FOR 2 INDIVIDUALS



RECOMMENDED LAYOUT
FOR 3 INDIVIDUALS

SIZE	DWG NO.	REV
A3	C-HVPT1XXX	5
CODE: 58982	SCALE: 1:2	SHEET 2 OF 3

C-HVPT1XXX



HVPT1F25	5	C310003642	1	SHELL
	4	C2000036633	1	OUT FERRULE
	3	HVPT1N	1	HOUSING
	2	C2700036043	1	SEAL
	1	C2200037253	1	END CAP
	ITEM	P/N	QTY	DESCRIPTION
HVPT1F35	5	C310003643	1	SHELL
	4	C2000036632	1	OUT FERRULE
	3	HVPT1N	1	HOUSING
	2	C2700036042	1	SEAL
	1	C2200037252	1	END CAP
	ITEM	P/N	QTY	DESCRIPTION
HVPT1F50	5	C310003644	1	SHELL
	4	C2000036631	1	OUT FERRULE
	3	HVPT1N	1	HOUSING
	2	C2700036041	1	SEAL
	1	C2200037251	1	END CAP
	ITEM	P/N	QTY	DESCRIPTION
HVPT1F70	5	C310003645	1	SHELL
	4	C2000036630	1	OUT FERRULE
	3	HVPT1N	1	HOUSING
	2	C2700036044	1	SEAL
	1	C2200037254	1	END CAP
	ITEM	P/N	QTY	DESCRIPTION

HVPT1A25	5	C310003642	1	SHELL
	4	C2000036633	1	OUT FERRULE
	3	HVPT1A	1	HOUSING
	2	C2700036043	1	SEAL
	1	C2200037253	1	END CAP
	ITEM	P/N	QTY	DESCRIPTION
HVPT1A35	5	C3100036431	1	SHELL
	4	C2000036632	1	OUT FERRULE
	3	HVPT1A	1	HOUSING
	2	C2700036042	1	SEAL
	1	C2200037252	1	END CAP
	ITEM	P/N	QTY	DESCRIPTION
HVPT1A50	5	C310003644	1	SHELL
	4	C2000036631	1	OUT FERRULE
	3	HVPT1A	1	HOUSING
	2	C2700036041	1	SEAL
	1	C2200037251	1	END CAP
	ITEM	P/N	QTY	DESCRIPTION
HVPT1A70	5	C310003645	1	SHELL
	4	C2000036630	1	OUT FERRULE
	3	HVPT1A	1	HOUSING
	2	C2700036044	1	SEAL
	1	C2200037254	1	END CAP
	ITEM	P/N	QTY	DESCRIPTION
HVPT1B25	5	C310003642	1	SHELL
	4	C2000036633	1	OUT FERRULE
	3	HVPTB1	1	HOUSING
	2	C2700036043	1	SEAL
	1	C2200037253	1	END CAP
	ITEM	P/N	QTY	DESCRIPTION

HVPT1G25	5	C310003642	1	SHELL
	4	C2000036633	1	OUT FERRULE
	3	HVPT1N	1	HOUSING
	2	C2700036043	1	SEAL
	1	C2200037253	1	END CAP
	ITEM	P/N	QTY	DESCRIPTION
HVPT1G35	5	C310003643	1	SHELL
	4	C2000036632	1	OUT FERRULE
	3	HVPT1N	1	HOUSING
	2	C2700036042	1	SEAL
	1	C2200037252	1	END CAP
	ITEM	P/N	QTY	DESCRIPTION
HVPT1B35	5	C310003643	1	SHELL
	4	C2000036632	1	OUT FERRULE
	3	HVPTB1	1	HOUSING
	2	C2700036042	1	SEAL
	1	C2200037252	1	END CAP
	ITEM	P/N	QTY	DESCRIPTION
HVPT1B50	5	C310003644	1	SHELL
	4	C2000036631	1	OUT FERRULE
	3	HVPTB1	1	HOUSING
	2	C2700036041	1	SEAL
	1	C2200037251	1	END CAP
	ITEM	P/N	QTY	DESCRIPTION
HVPT1B70	5	C310003645	1	SHELL
	4	C2000036630	1	OUT FERRULE
	3	HVPTB1	1	HOUSING
	2	C2700036044	1	SEAL
	1	C2200037254	1	END CAP
	ITEM	P/N	QTY	DESCRIPTION
HVPT1C35	5	C310003643	1	SHELL
	4	C2000036632	1	OUT FERRULE
	3	HVPT1C	1	BODY
	2	C2700036042	1	SEAL
	1	C2200037252	1	END CAP
	ITEM	P/N	QTY	DESCRIPTION
HVPT1C50	5	C310003644	1	SHELL
	4	C2000036631	1	OUT FERRULE
	3	HVPT1C	1	HOUSING
	2	C2700036041	1	SEAL
	1	C2200037251	1	END CAP
	ITEM	P/N	QTY	DESCRIPTION

HVPT1G50	5	C310003644	1	SHELL
	4	C2000036631	1	OUT FERRULE
	3	HVPT1N	1	HOUSING
	2	C2700036041	1	SEAL
	1	C2200037251	1	END CAP
	ITEM	P/N	QTY	DESCRIPTION
HVPT1G70	5	C310003645	1	SHELL
	4	C2000036630	1	OUT FERRULE
	3	HVPT1N	1	HOUSING
	2	C2700036044	1	SEAL
	1	C2200037254	1	END CAP
	ITEM	P/N	QTY	DESCRIPTION
HVPT1D35	5	C310003643	1	SHELL
	4	C2000036632	1	OUT FERRULE
	3	HVPT1D	1	HOUSING
	2	C2700036042	1	SEAL
	1	C2200037252	1	END CAP
	ITEM	P/N	QTY	DESCRIPTION
HVPT1N25	5	C310003642	1	SHELL
	4	C2000036633	1	OUT FERRULE
	3	HVPT1N	1	HOUSING
	2	C2700036043	1	SEAL
	1	C2200037253	1	END CAP
	ITEM	P/N	QTY	DESCRIPTION
HVPT1N35	5	C310003643	1	SHELL
	4	C2000036632	1	OUT FERRULE
	3	HVPT1N	1	HOUSING
	2	C2700036042	1	SEAL
	1	C2200037252	1	END CAP
	ITEM	P/N	QTY	DESCRIPTION
HVPT1N50	5	C310003644	1	SHELL
	4	C2000036631	1	OUT FERRULE
	3	HVPT1N	1	HOUSING
	2	C2700036041	1	SEAL
	1	C2200037251	1	END CAP
	ITEM	P/N	QTY	DESCRIPTION
HVPT1N70	5	C310003645	1	SHELL
	4	C2000036630	1	OUT FERRULE
	3	HVPT1N	1	HOUSING
	2	C2700036044	1	SEAL
	1	C2200037254	1	END CAP
	ITEM	P/N	QTY	DESCRIPTION

△