

USB / RJ45 ports with flat stylish design

New product addition for the flush silhouette switches



Flush silhouette

Flush bezel projects only 2mm from the front of the panel. Ideal for applications where a safe and hygienic surface is required.

Cable attached

Plastic encapsulated structure of the rear part prevents the cable from falling off. (USB port only)

Accessories with IP65/67 protection

Rubber and transparent plastic covers available. Water- and dust-proof.

Specification / Performance



USB2.0

Part No.	CW1X-USB20-1M	CW4X-USB20-1M
Connector standard	USB2.0 compliant	
Operating temperature	-25 to +70°C (no freezing)	
Storage temperature	-25 to +70°C (no freezing)	
Storage temperature (when packaged)	-10 to +50°C (no freezing)	
Relative humidity	0 to 90%RH (Max) (no condensation)	
Connecting cycles	1,500 times	
Connecting force	35N max.	
Removal force	10N min.	
Locking screw recommended tightening torque	1.2 to 1.5 N·m	
Bezel material	PBT	
Cable	AWG28, USB2.0, Standard cable, PVC shield (black)	
Protection degree	IP20 IP65/67 (accessory attached)	

RJ45

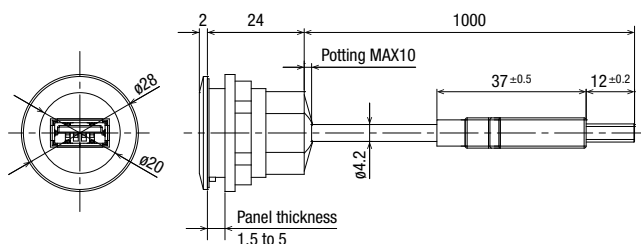
Part No.	CW1X-RJ45	CW4X-RJ45
No. of contacts	8 pin	
Operating temperature	-25 to +70°C (no freezing)	
Storage temperature	-25 to +70°C (no freezing)	
Storage temperature (when packaged)	-10 to +50°C (no freezing)	
Relative humidity	0 to 90%RH (Max) (no condensation)	
Connecting cycles	750 times	
Transmission performance	ISO/IEC 11 801: 2002 EN 50 173-1: Cat.6 Class EA 10/100 Mbit Ethernet 1/10 Gbit Ethernet	
Locking screw recommended tightening torque	1.2 to 1.5 N·m	
Bezel material	PBT	
Protection degree	IP20 IP65/67 (accessory attached)	

Ports



Shape	Bezel color	Part No.	Remarks
	Black	CW1X-USB20-1M	Cable length: 1m
	Metallic	CW4X-USB20-1M	USB2.0 TypeA
	Black	CW1X-RJ45	No. of contacts: 8 pin
	Metallic	CW4X-RJ45	

Dimensions

USB2.0



Accessories

Name / Shape	Material	Color	Part No.	Protection Degree
	TPE	Black	CW9Z-D1X1	IP65/67
	[Lens] Polycarbonate [Main body] Polyamide [Gasket] NBR	Translucent	CW9Z-D1X2	IP65/67

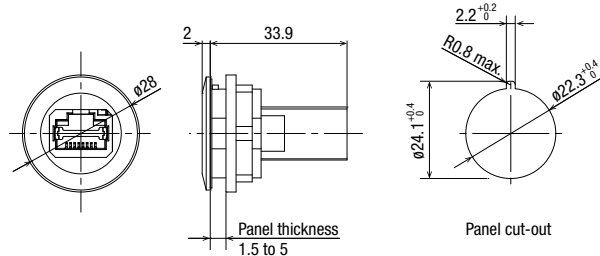
Note 1) Accessories can only be used for CW series ports (CW1X / CW4X).

Note 2) For the instruction sheet, read the QR code.



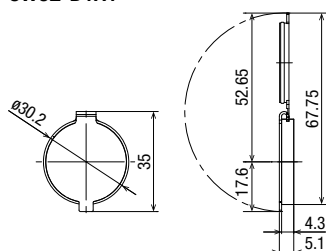
All dimensions in mm.

RJ45

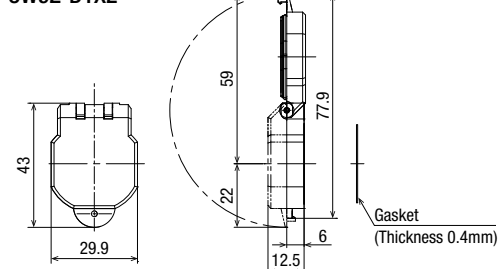


Dimensions for Accessories

Rubber cap CW9Z-D1X1



Plastic cover CW9Z-D1X2



- Panel thickness when CW9Z-D1X1/D1X2 is mounted: 1.5 to 5 mm

Recommended for use with the following products:

Flush Silhouette Switches

Flush Silhouette Switches

LB/LBW

Ø18.2 Ø22.3

□18.2 □22.5

18.2x24.2



LB series: Slim 2mm-thick bezels for stylish panels.
LBW series: Projects only 2mm from the panel. Smart appearance with large surface for secure operation.

LW

Ø25.3

□24.5

24.5



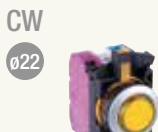
Create stylish panel with flush bezels projecting only 2.0 mm from panel front. Easy to install/remove, and ideal for panels that require cleanliness and safety.

CW

Ø22

22

22



Flush bezel projecting only 2.5 mm from panel front, with short, 39.9 mm depth behind the panel. Third-generation safety structure.

APEM Products



Pushbuttons

IA

Ø16

16

16



The actuator consists of a polyurethane membrane which depresses when the switch is actuated. (IP67)

AV

Ø22

22

30



Withstands any aggressive use. Resistant to demanding environmental requirements (rain, frost, salt, UV), and to vandalism.

Operator Interface

HG

15 inch

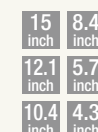
8.4 inch

12.1 inch

5.7 inch

10.4 inch

4.3 inch



Excellent visibility by super-bright LED backlight. Withstands harsh environments, and suitable for use in a wide temperature range from cold to hot environment.



Benelux

B: (+32) 27 25 05 00 - sales@apem.be

NL: (+31) (70) 799 91 51 - sales@apem.be

France

(+33) 5 63 93 14 98 - commercial@apem.fr

Germany

Munich: (+49) 89 45 99 11 0 - info@apem.de

Hamburg: (+49) 40 253054 0 - info@apem.de

Italy

(+39) 0172 74 3170 - apem.italia@apem.it

Sweden

(+46) 8 626 38 00 - info@apem.se

United Kingdom (+44) 1 844 202400 - sales@apem.co.uk