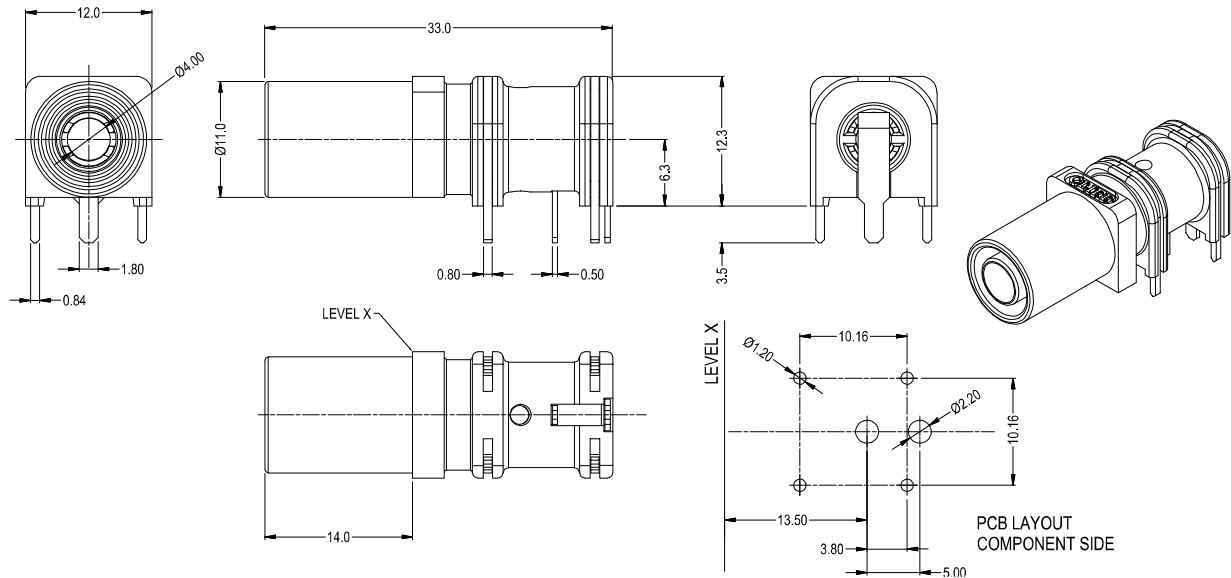


# CLIFF

## 4mm PANEL SOCKET S16N-2PC

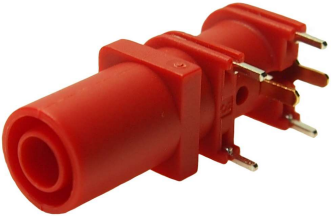


These 4mm sockets consist of two insulated, semi-circular contacts, which are connected to each other when a plug is inserted (switch function). The socket is PCB mounted.



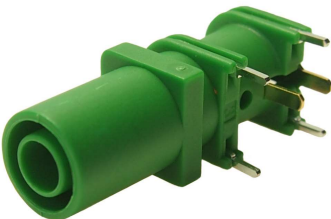
### **FCR7370B - S16N-2PC Black**

4mm shrouded socket. Gold plated  
Rated: 1KV CAT III - 10A



### **FCR7370R - S16N-2PC Red**

4mm shrouded socket. Gold plated  
Rated: 1KV CAT III - 10A



### **FCR7370G - S16N-2PC Green**

4mm shrouded socket. Gold plated  
Rated: 1KV CAT III - 10A



### **FCR7370L - S16N-2PC Blue**

4mm shrouded socket. Gold plated  
Rated: 1KV CAT III - 10A

Operating Temperature: -10°C to +60°C

For further information, contact [sales@cliffuk.co.uk](mailto:sales@cliffuk.co.uk)