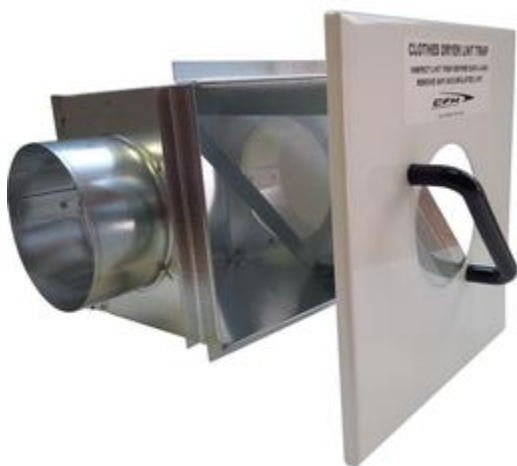
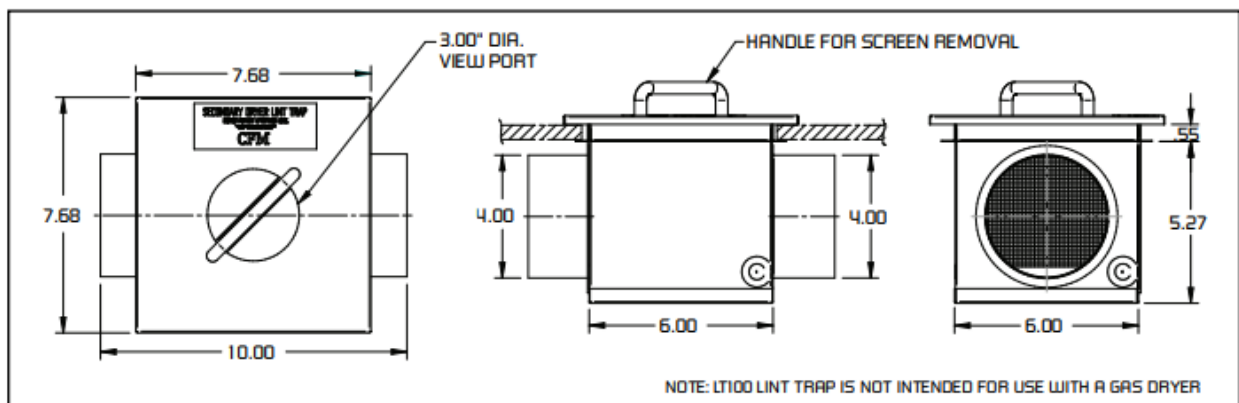




MODEL: LT100 - LINT TRAP

The LT100 Lint Trap offers a simple and user-friendly solution for reducing maintenance associated with dryer exhaust ducts. The one-piece door with screen slides easily and firmly into place, without having to fuss with flimsy springs or clips. Its versatile design allows for either wall or ceiling mount installations.



Description: LT100 CFM LINT TRAP FOR 4 DRYER DUCT

Features:

- Ceiling or wall mount option, may be mounted in any position

- Mounts flush with drywall surface; between 16" centers
- Can be painted to match décor
- Reduces lint build-up in duct
- Improves drying capacity
- Easy slide design is simple to use
- Sturdy slide mechanism
- 3" view port
- Not intended for use with a gas dryer
- Fits 4" duct

Specifications

- Country of Origin: Canada
- Length: 10 Inches
- Width: 6-1/8 in
- Height: 8-7/8 in
- Weight: 4 Lbs.
- Inlet/Outer Diameter: 4-1/8 Inlet 3-7/8 Outlet in
- Housing construction: 20 ga. corrosion-resistant, satin coat steel
- Mounting flange: 0.75"
- Filter: Galvanized mesh
- Door: Painted white with 3" viewing port
- Weights & Dimensions