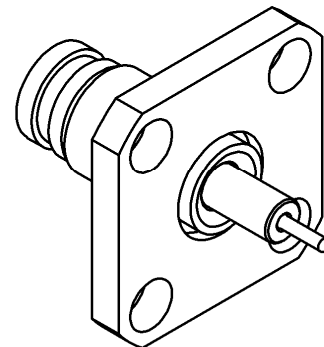
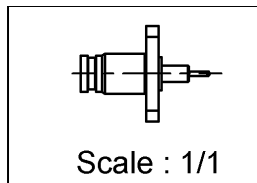
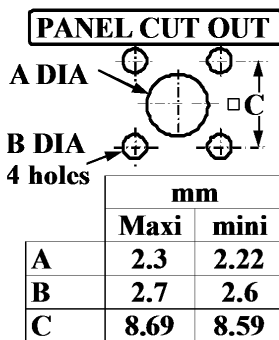
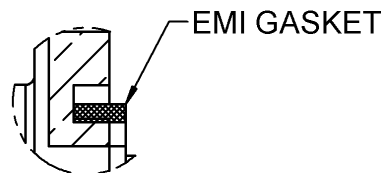
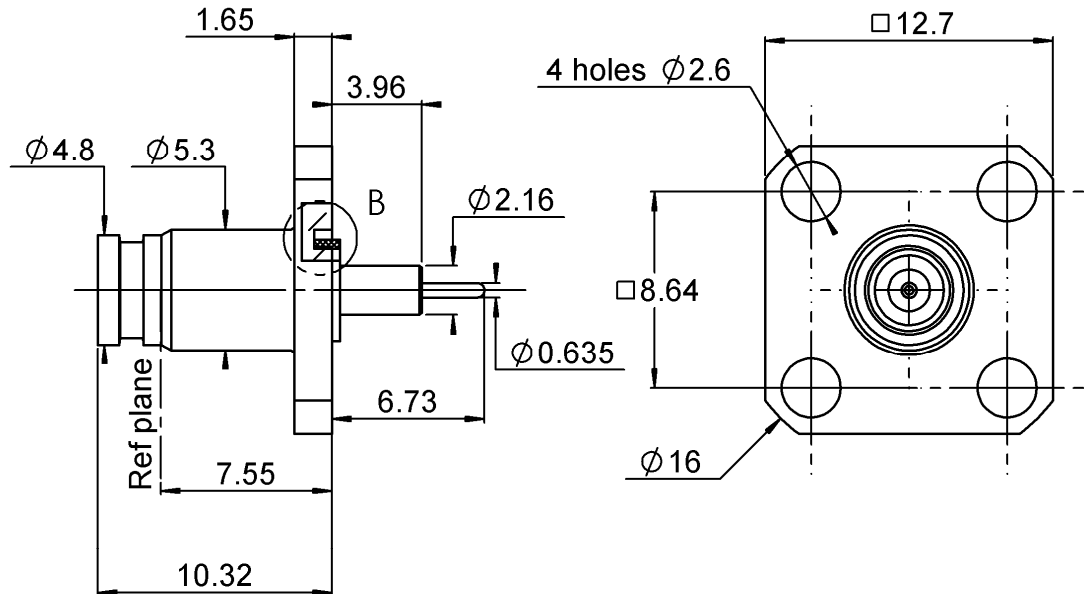


SQUARE FLANGE JACK RECEPTACLE

LIMITED-DETENT EMI GASKET

R222.L10.010

Series : SMP LOCK



All dimensions are in mm.

po

ao

COMPONENTS	MATERIALS	PLATING (µm)
BODY	BRASS	GOLD 1.3 OVER NICKEL 2
CENTER CONTACT	BERYLLIUM COPPER	GOLD 1.3 OVER NICKEL 1.3
OUTER CONTACT	-	-
INSULATOR	PTFE	-
GASKET	CONDUCTIVE SILICONE LOADED Ag	-
OTHERS PARTS	-	-
-	-	-
-	-	-

Issue : 1313 A

In the effort to improve our products, we reserve the right to make changes judged to be necessary.
 This document contains proprietary information and such information shall not be disclosed to any third party for any purpose whatsoever or used for manufacturing purposes without prior written agreement from RADIALL



SQUARE FLANGE JACK RECEPTACLE**R222.L10.010****LIMITED-DETENT EMI GASKET**Series : **SMP LOCK****PACKAGING**

Standard	Unit	Other
100	-	Contact us

SPECIFICATION**ELECTRICAL CHARACTERISTICS**

Impedance	50	Ω
Frequency	0-12	GHz
VSWR	1.2* + 0,0000	x F(GHz) Maxi
Insertion loss	0.12*	$\sqrt{F}(\text{GHz})$ dB Maxi
RF leakage	- (90)	- F(GHz)) dB Maxi
Voltage rating	335	Veff Maxi
Dielectric withstanding voltage	500	Veff mini
Insulation resistance	5000	M Ω mini

ENVIRONMENTAL

Operating temperature	-65/+165	$^{\circ}\text{C}$
Hermetic seal	NA	Atm.cm3/s
Panel leakage	NA	

OTHER CHARACTERISTICS

Assembly instruction

Others :

*Coaxial Transmission Line Only

MECHANICAL CHARACTERISTICS

Center contact retention	
Axial force – Mating end	6.7 N mini
Axial force – Opposite end	6.7 N mini
Torque	NA N.cm mini
Recommended torque	
Mating	NA N.cm
Panel nut	NA N.cm
Mating life	500 Cycles mini
Weight	2,7100 g

Issue : 1313 A

In the effort to improve our products, we reserve the right to make changes judged to be necessary.
This document contains proprietary information and such information shall not be disclosed to any third party for any purpose whatsoever or used for manufacturing purposes without prior written agreement from RADIALL

