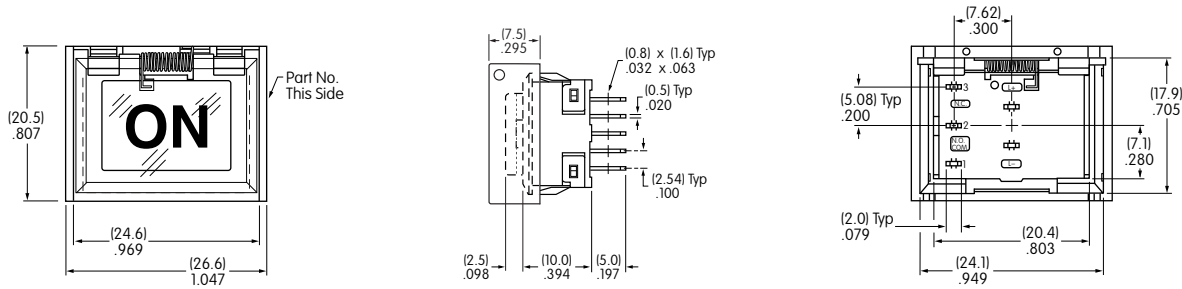
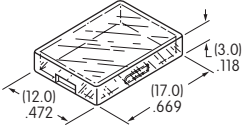
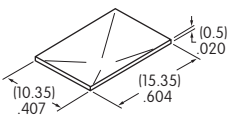



UB16VA001

Rectangular • Green LED • Snap-in Mount • Solder Lug

Dimensions in mm/inch



BASE SWITCH	FULL FACE ILLUMINATED CAP		LEGEND SPECIFICATIONS
	AT4117 Lens	AT4118 Diffuser	Legend ON
	Color: Clear	Color: White	Type Style Helvetica Bold
Part Number UB16NKW015F-JB			Type Size 22 Point
	Material: Polycarbonate	Lens Finish: Glossy	Legend Color Black
		Diffuser Finish: Textured	Print Method Laser Etch on Inside of Lens
			Legend shown is illustrative only. Actual art may vary.

POLES & CIRCUITS						
Pole	Model	Plunger Position () = Momentary		Connected Terminals		Throw & Switch/Lamp Schematics
		Normal	Down	Normal	Down	
SP	*UB16	ON	ON	1-3	1-2	Notes: Switch is marked with NC, NO, COM, L+ & L-. Lamp circuit is isolated and requires an external power source. 

* When in latched position for the alternate circuit, cap position is .039" (1.0mm) above the housing.

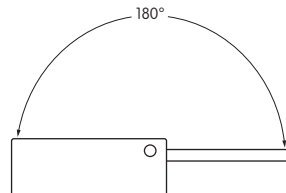
Spring Loaded Protective Guard

AT4172
Rectangular
Protective Guard

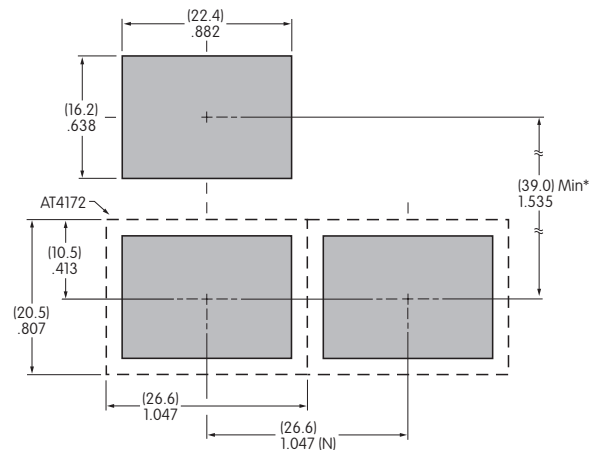


Opens 180°
Closes automatically

Materials:
Cover: Clear Polycarbonate
Base: Black GFR Polyamide
Coil Spring: Stainless Steel



Recommended Panel Thickness:
.039" ~ .106" (1.0mm ~ 2.7mm)

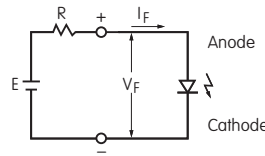


(N) = Number of switches * Minimum dimension allows opening of cover to 180°

ELECTRICAL SPECIFICATIONS FOR LED

Color	Green	
Maximum Forward Current	I_{FM}	25mA
Typical Forward Current	I_F	20mA
Forward Voltage	V_F	2.1V
Maximum Reverse Voltage	V_{RM}	5V
Current Reduction Rate Above 25°C	ΔI_F	0.46mA/°C
Ambient Temperature Range		-25°C ~ +50°C

The electrical specifications shown are determined at a basic temperature of 25°C. If the source voltage exceeds the rated voltage, a ballast resistor is required. The following diagram and formula will assist in calculating the value of the ballast resistor.



$$R = \frac{E - V_F}{I_F}$$

Where: R = Resistor Value (Ohms)
 E = Source Voltage (V)
 V_F = Forward Voltage (V)
 I_F = Forward Current (A)

Base Switch Specifications

Electrical Capacity (Resistive Load)

Power Level: 5A @ 125/250V AC or 5A @ 30V DC


Other Ratings

- Contact Resistance:** 50 milliohms maximum
- Insulation Resistance:** 200 megohms minimum @ 500V DC
- Dielectric Strength:** 1,000V AC minimum between contacts for 1 minute minimum;
1,500V AC minimum between contacts & case for 1 minute minimum
- Mechanical Life:** 200,000 operations minimum
- Electrical Life:** 10,000 operations minimum; 100,000 operations minimum with resistive load of 3A @ 125V AC
- Nominal Operating Force:** 1.9N
- Contact Timing:** Break before make
- Travel:** Pretravel .067" (1.7mm); Overtravel .024" (0.6mm); Total Travel .091" (2.3mm)

Materials & Finishes

- Housing/Bezel:** Glass fiber reinforced polyamide (UL94V-0)
- Snap-in Frame:** Stainless steel
- Movable Contact:** Phosphor bronze
- Movable Contacts:** Silver alloy or copper with gold plating
- Stationary Contacts:** Silver alloy or copper with gold plating
- Switch Terminals:** Phosphor bronze with silver or gold plating
- Lamp Terminals:** Brass with silver plating
- Base:** Glass fiber reinforced liquid crystal polymer (UL94V-0)

Environmental Data

- Operating Temperature Range:** -25°C through +50°C (-13°F through +122°F)
- Humidity:** 90 ~ 95% humidity for 96 hours @ 40°C (104°F)
- Vibration:** 10 ~ 55Hz with peak-to-peak amplitude of 1.5mm traversing the frequency range & returning in 1 minute; 3 right angled directions for 2 hours
- Shock:** 50G (490m/s²) acceleration (tested in 6 right angled directions, with 5 shocks in each direction)
- RoHS Compliant:** 

Installation

- Cap Installation Force:** 7.55N (1.70 lbf) maximum downward force on cap
- Soldering Time & Temp:** Manual Soldering: 390°C for 4 seconds, 2 cycles
- Cleaning:** These devices are not process sealed. Hand clean locally using alcohol based solution.

Standards & Certifications

- Flammability Standards:** UL94V-0 housing/bezel & base