

6

5

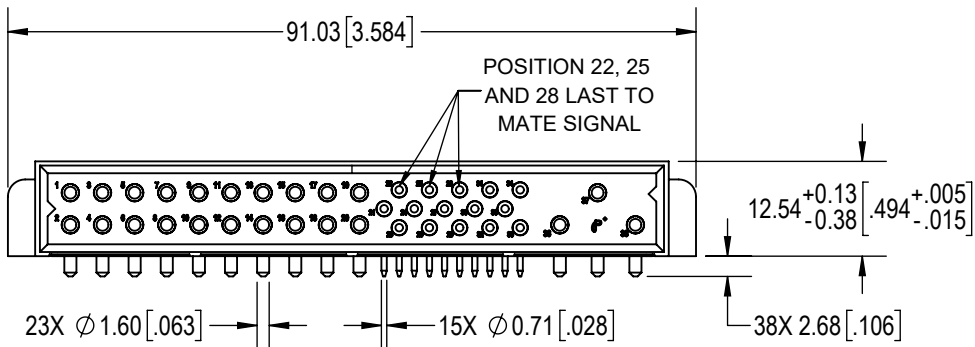
4

3

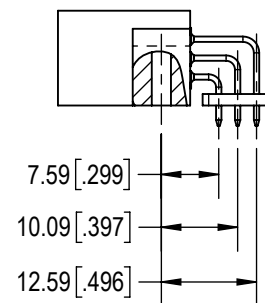
2

1

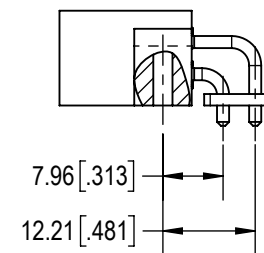
D



SIZE 22 CONTACTS

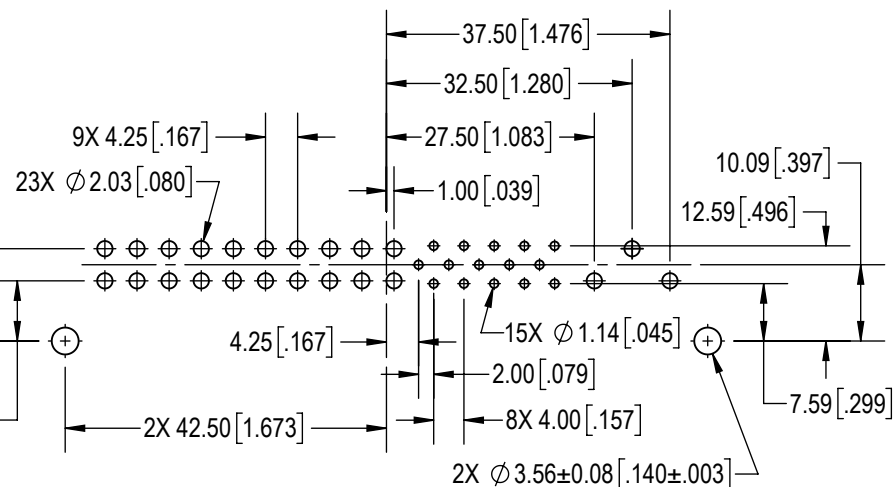
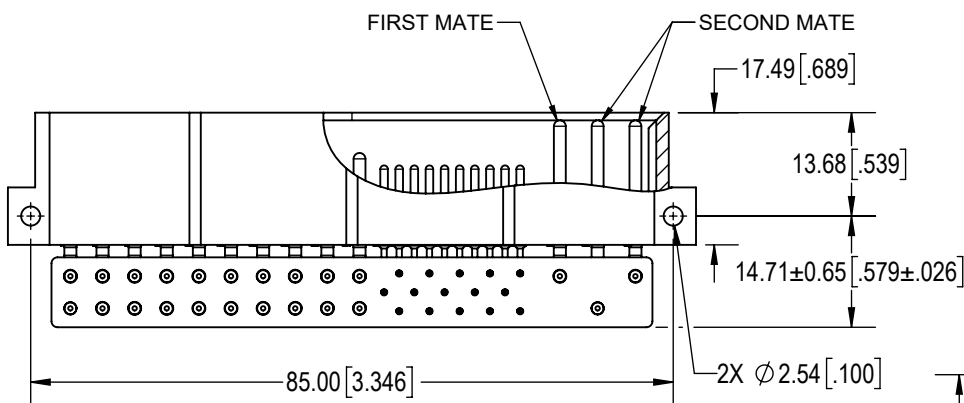


SIZE 16 CONTACTS



D

C



C

B

B

CONTACT HOLE PATTERN

NOTES:

1. MATERIALS AND FINISH:

INSULATOR: GLASS FILLED POLYESTER, UL 94V-0, COLOR: BLUE.

SIZE 16 CONTACTS: PRECISION MACHINED HIGH CONDUCTIVITY COPPER ALLOY, GOLD FLASH OVER NICKEL ON MATING END AND TERMINATION END.



SIZE 22 CONTACTS: PRECISION MACHINED COPPER ALLOY, GOLD FLASH OVER NICKEL ON MATING END AND TERMINATION END.

ALIGNMENT BAR: GLASS FILLED POLYESTER, UL 94V-0, COLOR: BLUE.

2. DETAILED PRODUCT, MECHANICAL AND ELECTRICAL INFORMATION IS AVAILABLE IN THE LATEST COMPACT POWER PRODUCT PUBLICATION AT CONNECTPOSITRONIC.COM.

A

A

BY GJ		CHK AP		3RD ANGLE 		<p>POSITRONIC BELIEVES THE DATA ON THE DRAWING TO BE RELIABLE. THE USER EMPLOYS SUCH INFORMATION AT HIS OWN DISCRETION AND RISK. POSITRONIC ASSUMES NO RESPONSIBILITY FOR RESULTS OBTAINED OR DAMAGES INCURRED FROM USE OF SUCH INFORMATION IN WHOLE OR IN PART.</p>  <p>Positronic® CONNECTPOSITRONIC.COM</p>	
APR AB		RELEASED DATE: 2025-06-24		SCALE NTS			
TOLERANCES				PART NUMBER		SERIES	
±0.03mm [.001 INCHES]FOR MALE CONTACT MATING DIAMETERS ±0.08mm [.003 INCHES]FOR CONTACT TERMINATION DIAMETERS ±0.13mm [.005 INCHES]FOR ALL OTHER DIAMETERS ±0.38mm [.015 INCHES]FOR ALL OTHER DIMENSIONS ±5° FOR ALL ANGLES DIMENSION ARE IN MILLIMETERS [INCHES]				PCIH38M400A1		PCIH	
				TITLE		PCIH38M400A1	
				CREATED ON: 2025-06-24		SHEET SHEET 1 OF 1	

6

5

4

3

2

1