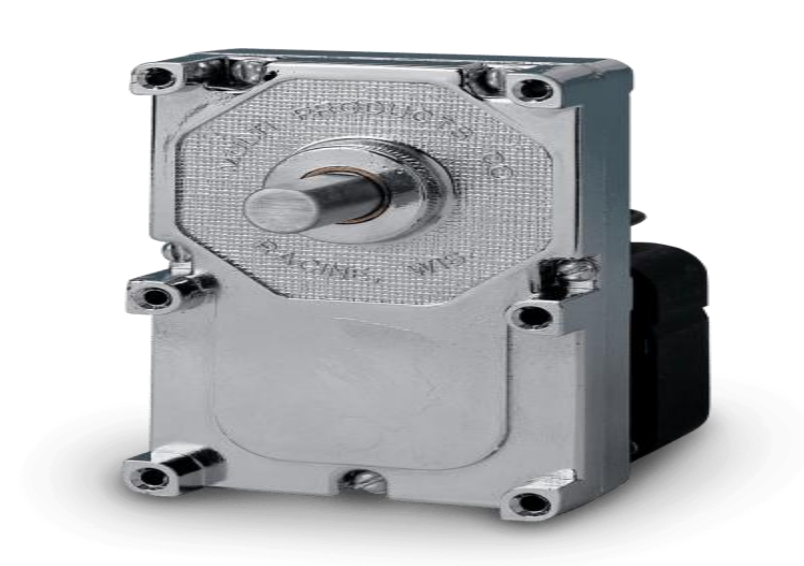




Model 9906: 6 RPM Stock AC



Specification:

Voltage	120
UL Number	UL52
Rotation	CW
Shaft Diameter	3/8"
Cooling Fan	Yes. 2-5/8" plastic
Speed	6 RPM
Drawing Stack Size	1.06"
Idle Speed	6.4 RPM
Idle Amps	1.1
Rated Speed	5.7 RPM
Rate Torque	90 inlb
Stall Torque	160 inlb
Stall Amps	1.3
Part Number	9906

Product Details

Overview

Our most robust and cost-effective heavy-duty gearmotor offering with industry standard mounting allowing for easy retrofit into existing applications. Also, a high torque and low speed capable gearmotor for use in new design and developments projects.

Stock AC Motor Features

- Versatile, Standard Industry Mounting
- Heavy Duty Zinc die-cast Housing
- Common Industry Output Speed and Torque
- Standard Diameter Output Shafts with 1" Extension
- High Temperature Spherical Bushings on Motor
- Robust Output Flange Bearings in Gearcase
- 2-12" Long Motor Hook-up Wires
- Heavy Duty Geartrain Design
- Nylon High Speed Gear for Smooth Operation