

JWPF Standard Overmolded Assemblies

2.0mm pitch waterproof connector assembly

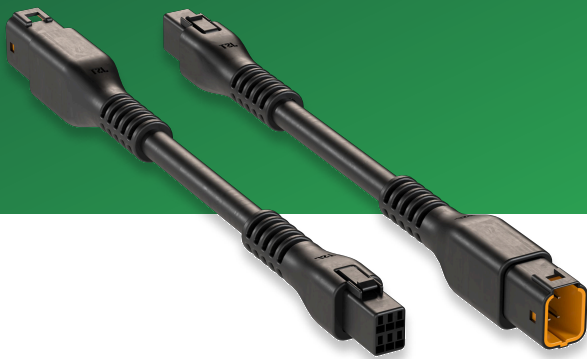
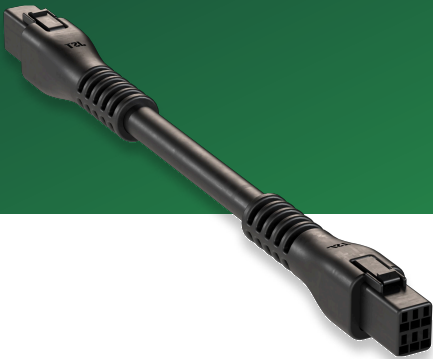
New Product Introduction

Built upon the JWPF waterproof series, JST Guntersville Assembly Manufacturing (GAM) in Alabama USA is now offering JWPF overmolded standard connector assemblies using our state-of-the-art low-pressure molding machines.

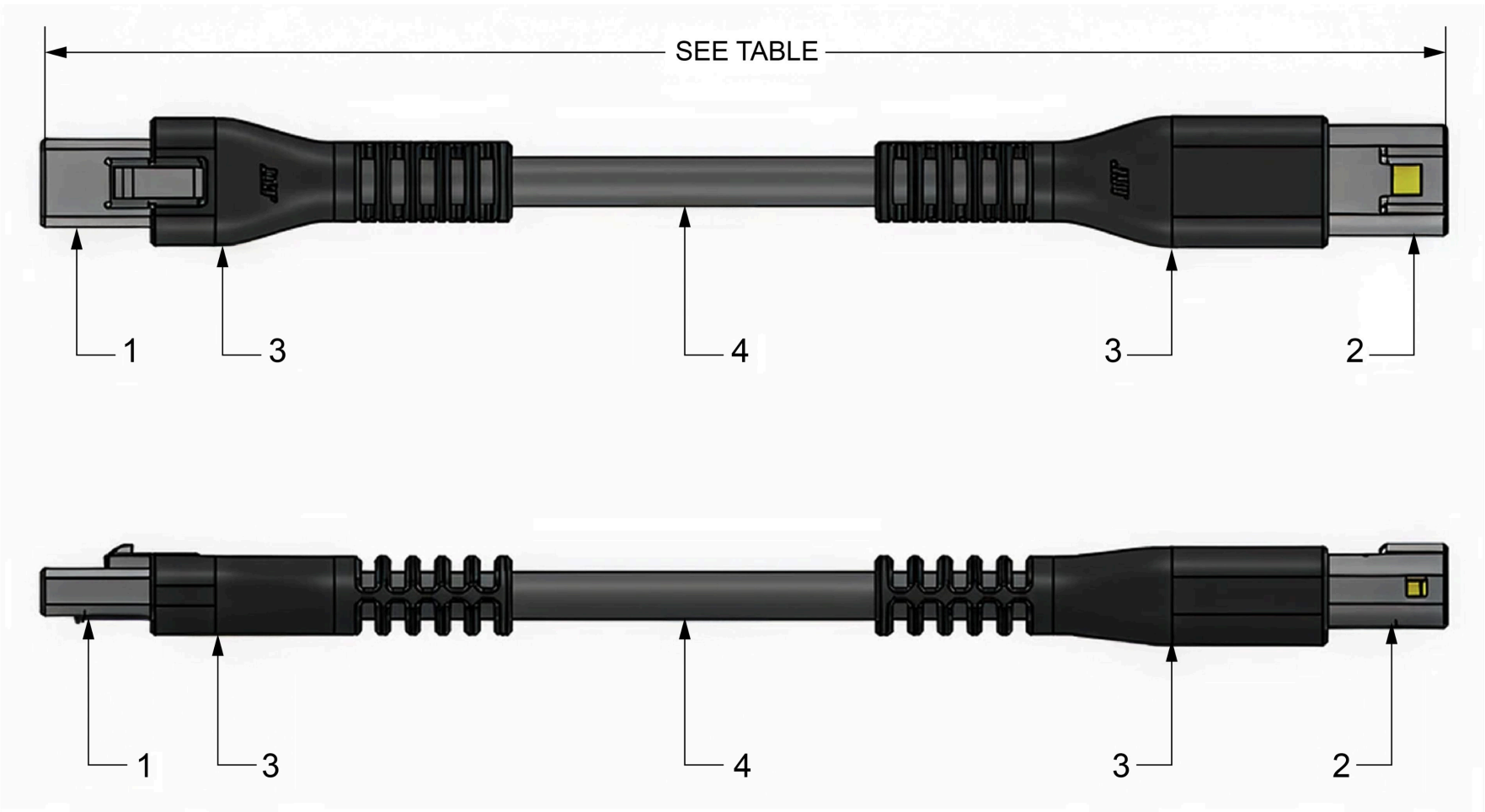
- Standard Lengths offered**
 - 1.5ft (547mm)
 - 3.0ft (914mm)
 - 6.5ft (1981mm)
- Number of positions available**
 - 2, 3, 4, 6, 8
- Double-ended assembly configurations**
 - Female-to-Female (Receptacle-to-Receptacle)
 - Male-to-Female (Tab-to-Receptacle)
 - Male-to-Male (Tab-to-Tab)
- Jacketed cable**
 - AWG#22, 4 conductor, black wire
- Advantages**
 - IP67 ingress protection for a dust-tight, waterproof cable assembly solution
 - Overall better performance in outdoor conditions and harsh environments
 - Increased durability and strength at cable-connector point of connection
 - Added strain relief for protection against mechanical stress and external forces

Covering a wide range of applications & industry segments

- Appliance / White Goods
- Medical Device
- Automotive / EV Charging
- Motorcycles / E-bikes
- Autonomous Lawn Mowers
- Boating / Marine
- Snowmobiles
- Hot tubs / Spas
- Energy / Oil & Gas
- Drones (UAV/UAS)
- Electrical tools
- Outdoor lighting
- Robotics / Industrial Machinery
- Logistics / Material Handling
- Agricultural Equipment



Example of 4 circuit assembly part description



| ITEM NO. | PART NUMBER | DESCRIPTION |
|----------|--------------------|--------------------------|
| 1 | 04R-JWPF-VKLE-S | HOUSING |
| 1 | SWPR-001T-P025 | TERMINAL |
| 2 | 04T-JWPF-VKLE-S | HOUSING |
| 2 | SWPT-001T-P024 | TERMINAL |
| 3 | SPECTRA-MELT SM301 | BLACK LOW PRESSURE RESIN |
| 4 | JACKETED CABLE | 22AWG, 4COND, BLACK |

Specifications

| | |
|--------------------------------|------------------------------------------------------------------------------------|
| Current rating | 3.0A max |
| Voltage rating | 100V AC/DC |
| Operating temperature range | 55°C to +105°C |
| UL Listed | Except for male-to-male (tab-to-tab), all JWPF overmolded assemblies are UL Listed |
| Jacketed cable | AWG #22 / black / UL2464 |
| Ingress Protection (IP) rating | IP67 |
| Overmolding Material | Low pressure black resin |

Part Number Nomenclature

Example

4 circuit double-ended assembly part number

A04TJWPF04RJWPF22KJ457OM

- **A** Letter A is indicator for standard assembly
- **04T** **4 circuit tab (male) housing**
- **JWPF** JWPF waterproof connector series
- **04R** **4 circuit receptacle (female) housing**
- **JWPF** JWPF waterproof connector series
- **22KJ** **AWG#22, black color jacketed cable**
- **457** 457mm overall length of cable assembly
- **OM** **Over-Molded**



Please visit our website at the link below for details on all part numbers, cable lengths and configurations.

<https://gam-gec.com/standard-over-molded-assemblies-by-pitch/jwpf-over-mold-2-0-mm-pitch/>

For more information, please contact your local JST representative or reach us direct at JST Guntersville Assembly Manufacturing (GAM) in Alabama, USA.

JST/GAM/Phone: (256) 571-9117

JST/GAM/Email: gam@jstus.com

JST/GAM/Website: gam-gec.com

JST