

# CLIFF

## SMD DC SOCKETS



Designed for surface mounting assembly.  
Available as discrete or taped / reeled parts.  
Characteristics are similar to our versions with through hole legs. Supplied loose (STD) or taped in 1000 / Reel (to order).

### Specification (All models)

Insertion / Withdrawal force: 0.3 - 2.0 kgf

Contact Resistance:

(4 terminal method 1KHz @ <100mA)

Initial - Plug / Contact <50mΩ

Contact / Shunt <30mΩ

After life test - Plug / Contact <100mΩ

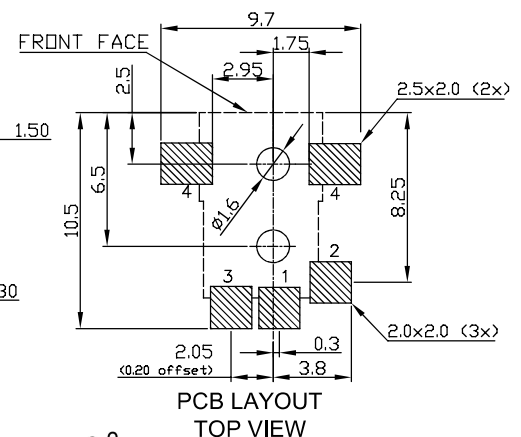
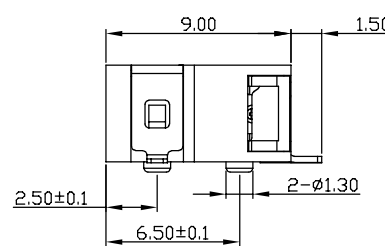
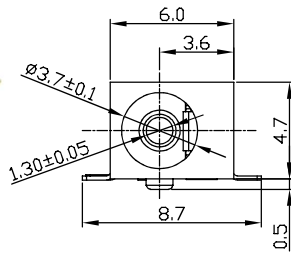
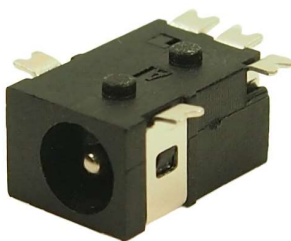
Contact / Shunt <60mΩ

Electrical Rating: DC10 - 2A / 12V

DC8 - 1A / 12V

**DC-8S 1.3mm Pin**

**Part No. FC68145S**  
**Taped FC68145ST**



**DC-10AS 2.1mm Pin**  
**DC-10BS 2.5mm Pin**

**Part No. FC68148S**

**Part No. FC68149S**

**Add Suffix 'T' for taped.**

