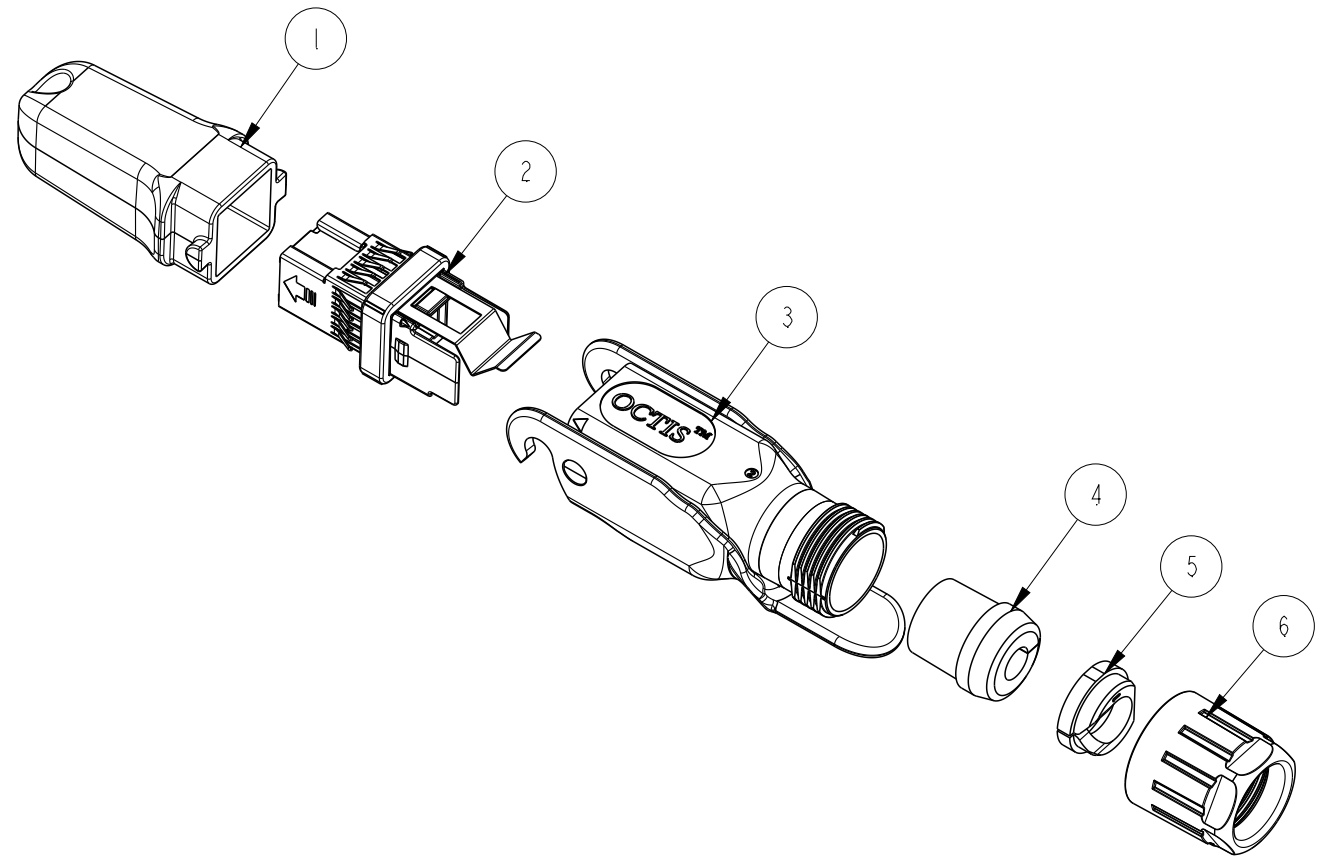
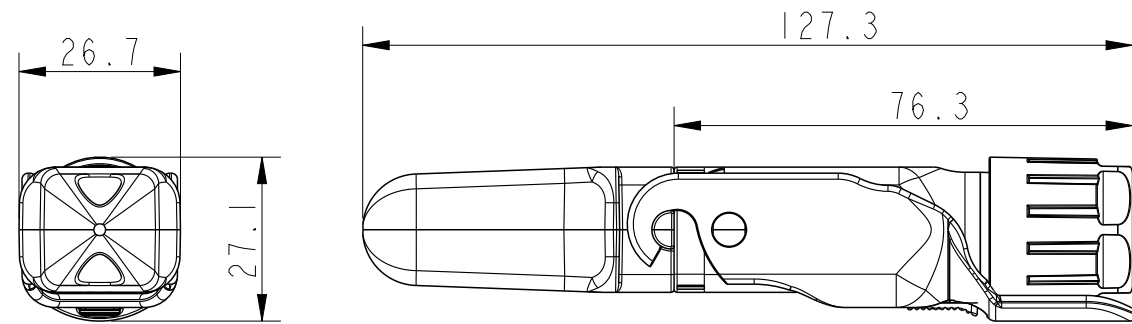
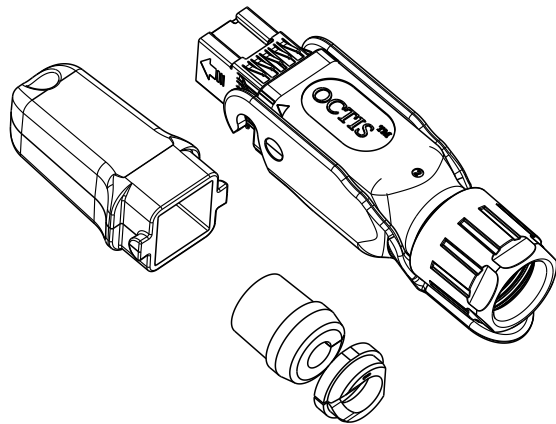


PART NUMBER
10146704-101LF

OCTIS SFP/SFP+ PLUG KIT-REVERSE LEVER,PITCH 26MM

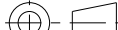
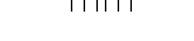


PACKING CONFIGURATION

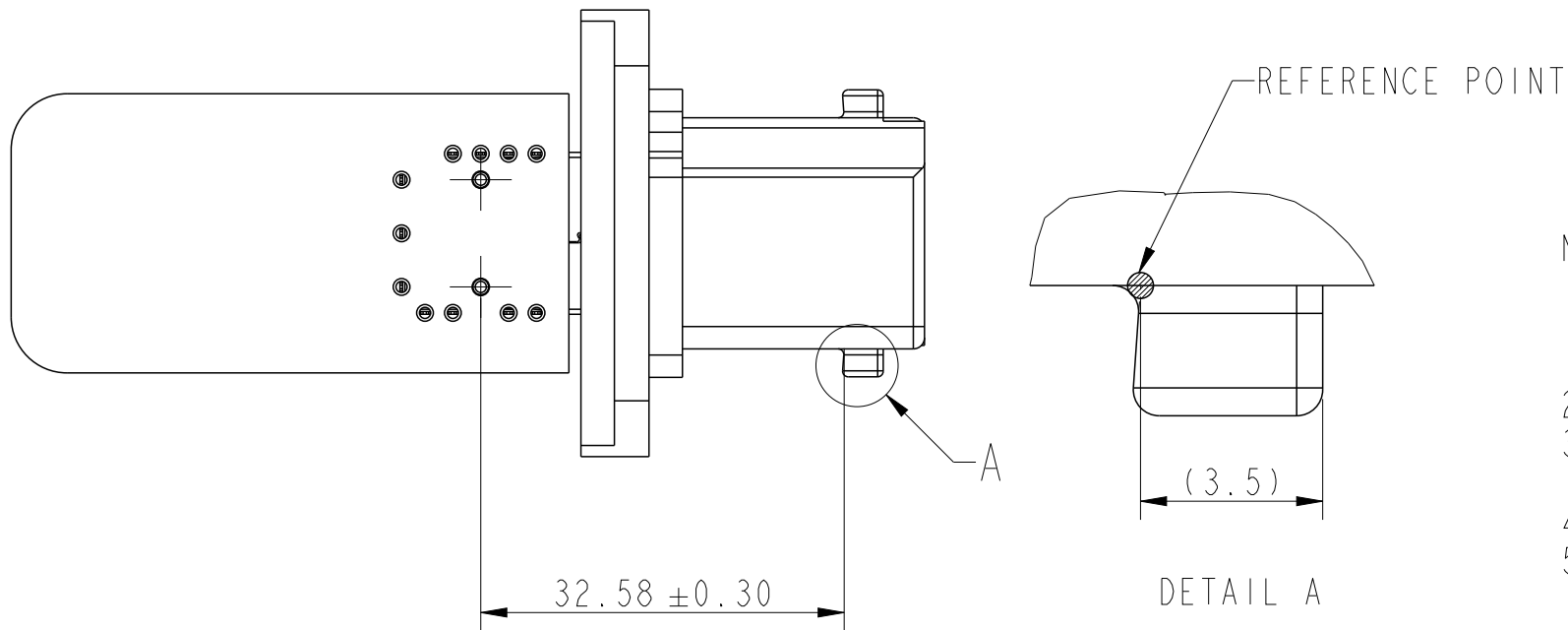
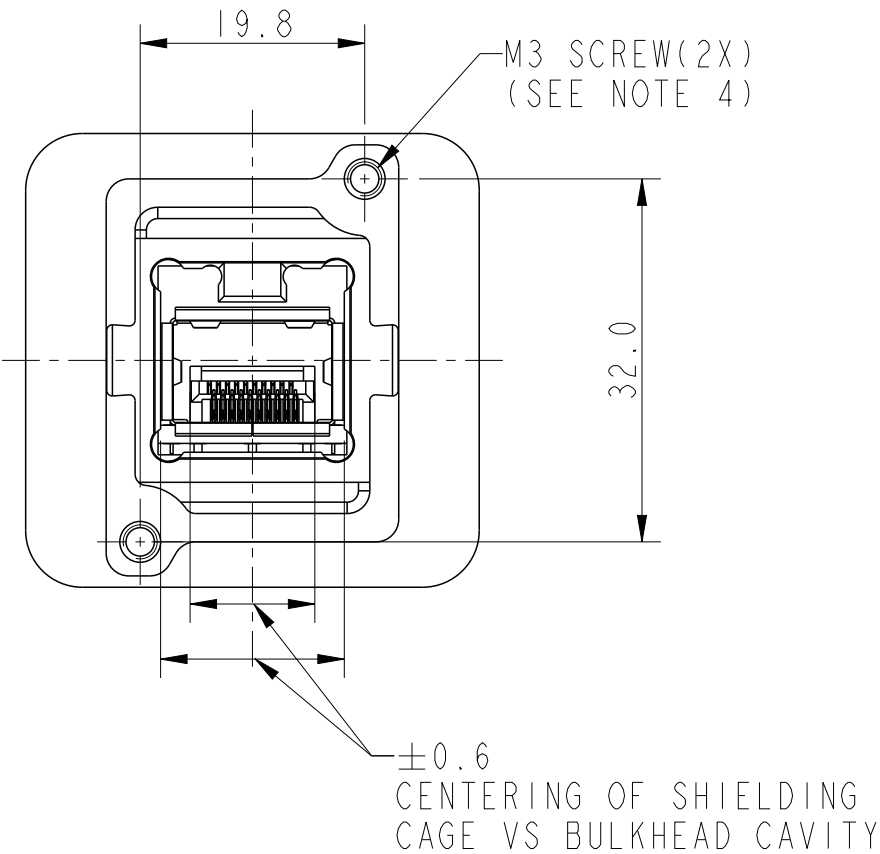
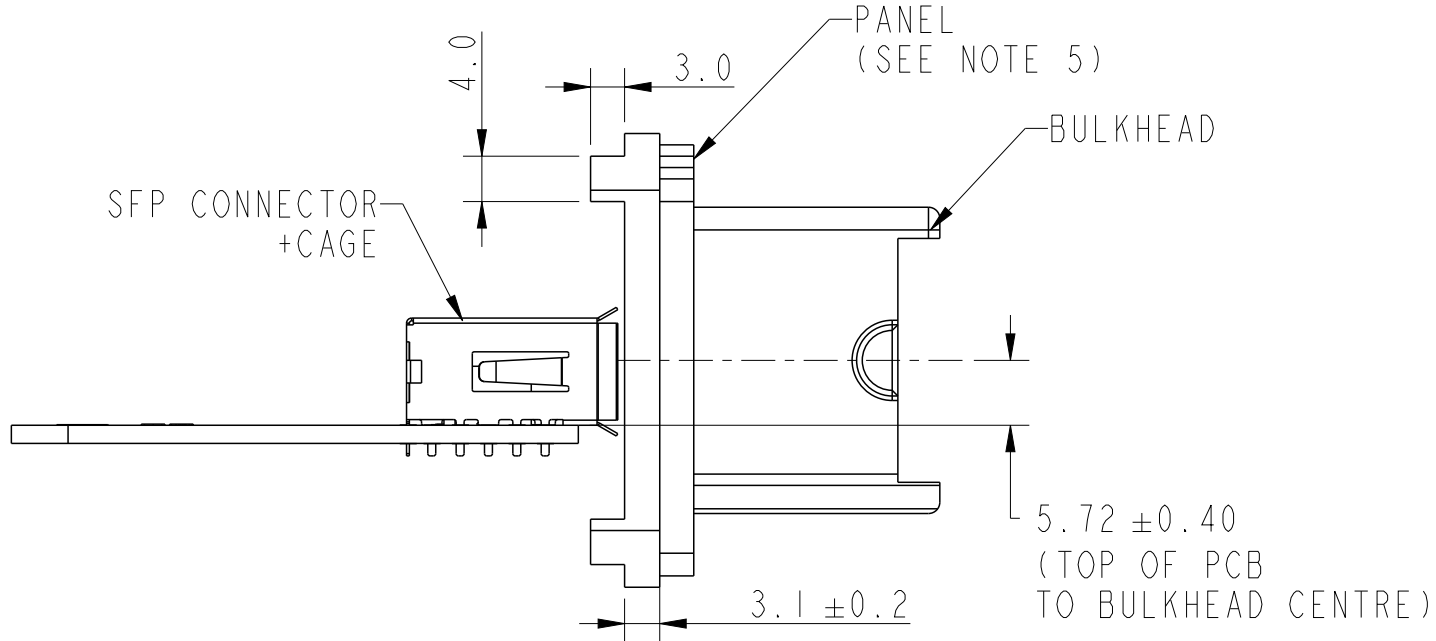


SL NO.	COMPONENT	MATERIAL	REMARKS
1	PLUG CAP	PBT GF	-
2	HOLDER SUBSET KIT	ZAMAK+ STAINLESS STEEL+ SILICONE	PASSIVATED
3	HOUSING SUBSET KIT	PBT GF+IXEF	REVERSE FITTED LEVER
4	SPLIT RUBBER GLAND Ø 7	SILICONE	
5	TIGHTENING CONE	PA	-
6	GLAND NUT	PBT GF	COLOUR: BLACK




* STANDARD RUBBER GLAND DIA OFFERED IS 7MM
OPTIONAL RUBBER GLAND DIA OF 6MM,8MM,9MM,10MM & 11.5MM AVAILABLE ON REQUEST

spec ref				dr	Varghese, Bone	2019/04/25	projection 		size	A3	scale	3:10
tolerance std ISO 406 ISO 1101	TOLERANCES UNLESS OTHERWISE SPECIFIED			eng	Varghese, Bone	2019/06/11			ecn no	ELX-I-33879-1		
				chr	-	-						
				appr	K-Paul Biju	2019/06/11	product family		OCTIS	rel level Released		
surface ISO 1302	linear	0.X	±0.3	Amphenol FCI	title	OCTIS SFP/SFP+ PLUG KIT OCTIS PITCH 26 MM			dwg no	10146704		rev B
		0.XX	±0.13									
		0.XXX	±0.05									
		angular	0°	±2°		cat. no.	-	Product - Customer Drw			sheet 1 of 3	

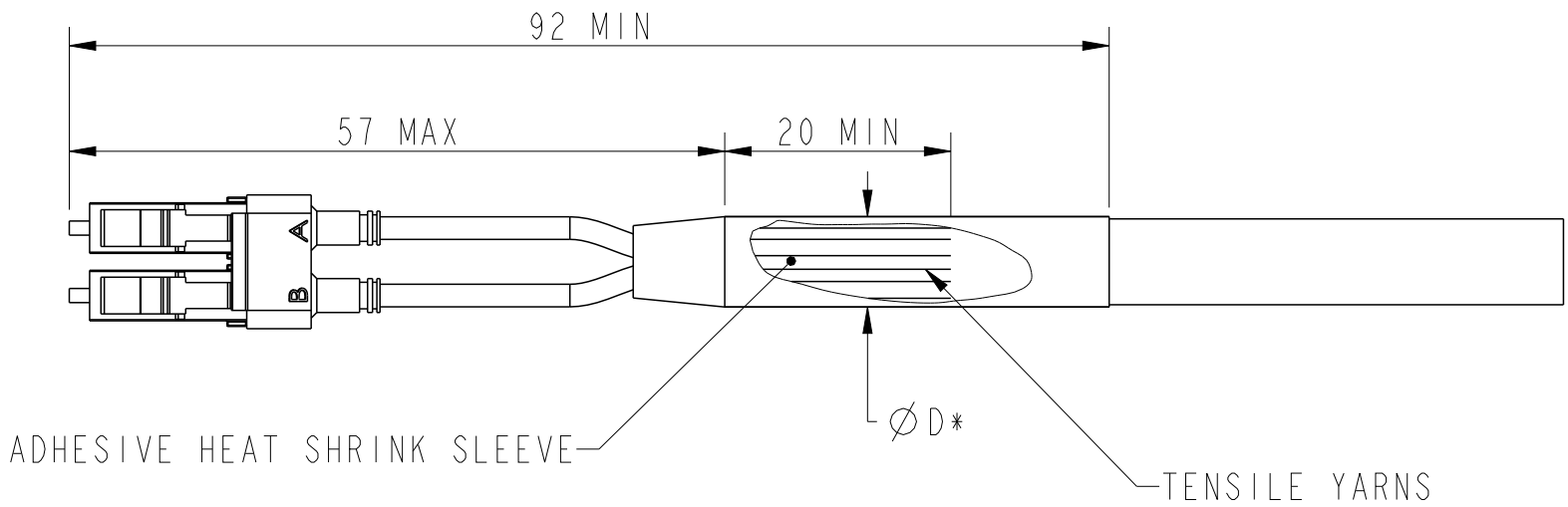
BOARD CONNECTOR WITH BULK HEAD (RECEPTACLE) DETAILS



- NOTES:
1. BOARD CONNECTOR SHOWN IS FOR REFERENCE PURPOSE. REFER DRAWING P-UE76-A20-X00XX FOR BOARD CONNECTOR DETAILS
 2. REFER DRAWING 10133694 FOR CAGE DETAILS
 3. REFER DRAWING 10138458 FOR BULK HEAD (RECEPTACLE) DETAILS
 4. SCREWS TO BE USED ARE M3 X 6MM; MATERIAL-STAINLESS STEEL
 5. CASTED MOUNTING PANEL SHOULD HAVE ON ITS REAR SIDE AN INTEGRAL RECTANGULAR REINFORCED RIBS OF 3MM THICKNESS AND 4MM WIDTH ALONG THE MOUNTING SCREW PLANE AT THE TOP AND BOTTOM TO ACCOMODATE THE BLIND INTERNAL SCREW THREAD




spec ref				dr		Varghese, Bone	2019/04/25	projection		mm		size	A3	scale		1:1		
tolerance std		TOLERANCES UNLESS OTHERWISE SPECIFIED		eng		Varghese, Bone	2019/06/11					ecn no		ELX-I-33879-1				
ISO 406				chr		-	rel level					Released						
ISO 1101				appr		K-Paul Biju	2019/06/11					product family		OCTIS				
surface  ISO 1302		linear	0.X	±0.3	Amphenol FCi		title	OCTIS SFP/SFP+ PLUG KIT				dwg no	10146704				rev	B
			0.XX	±0.13														
			0.XXX	±0.05														
		angular	0°	±2°			cat. no.	-	Product - Customer Drw				sheet 2 of 3					

FAN-OUT DEFINITION



ØD*	RECOMMENDED GLAND SIZE
From 4.8 min to 5.8 Max	"6"
From 5.8 min to 6.8 Max	"7"
From 6.8 min to 7.8 Max	"8"
From 7.8 min to 8.8 Max	"9"
From 8.8 min to 9.8 Max	"10"
From 10.3 min to 11.3 Max	"11.5"

*CABLE DIAMETER UNDER THE GLAND. IF THE CABLE HAS A SLEEVE, THE DIAMETER OVER THE SLEEVE SHOULD BE CONSIDERED. THE TOLERANCE OF ØD SHOULD BE TAKEN INTO ACCOUNT TO MAKE SURE IT IS ALWAYS WITHIN THE SPECIFIED RANGE

spec ref				dr		Varghese, Bone		2019/04/25		projection		mm		size		A3		scale		1:2					
tolerance ref std		TOLERANCES UNLESS OTHERWISE SPECIFIED				eng		Varghese, Bone		2019/06/11						ecn no		ELX-I-33879-1							
ISO 406						chr		-		-						rel level		Released							
ISO 1101						appr		K-Paul Biju		2019/06/11						product family		-							
surface  ISO 1302		linear		0.X		±0.3		Amphenol FCI		title		OCTIS SFP/SFP+ PLUG KIT		dwg no		10146704		rev		B					
																						0.XX		±0.13	
																						0.XXX		±0.05	
		angular		0°		±2°																cat. no.		-	