



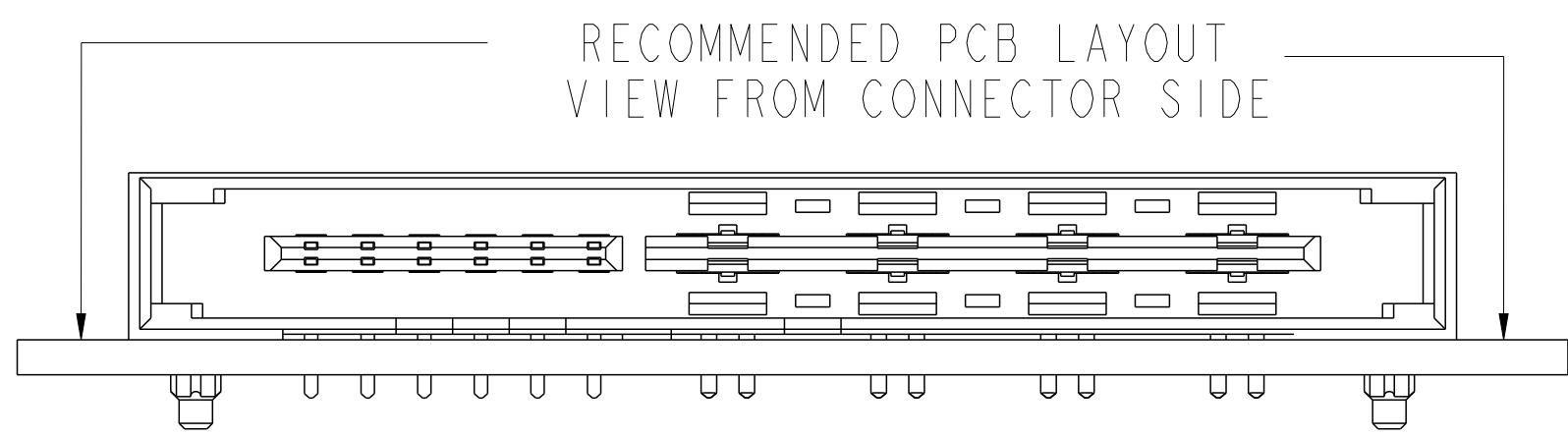
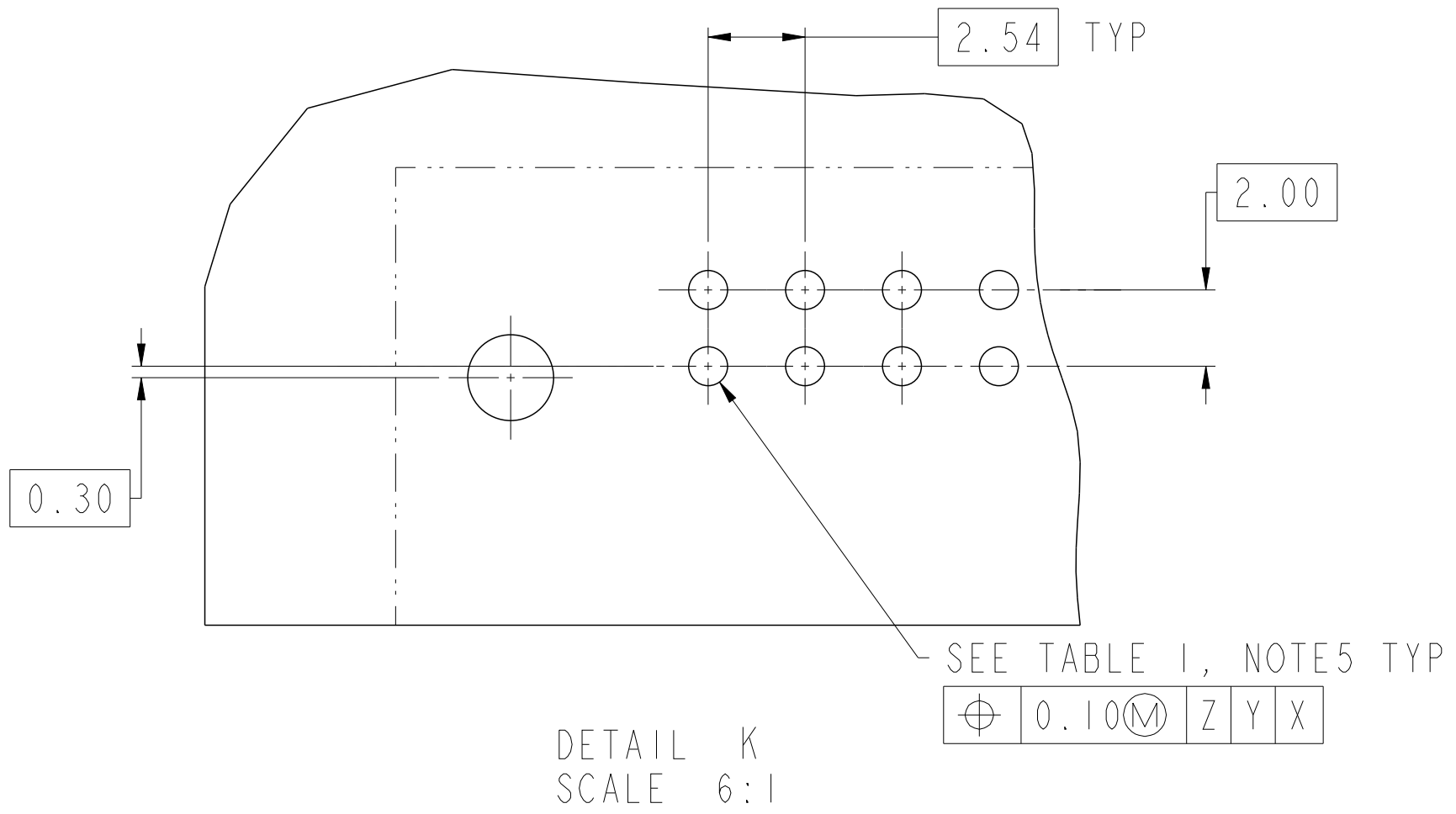
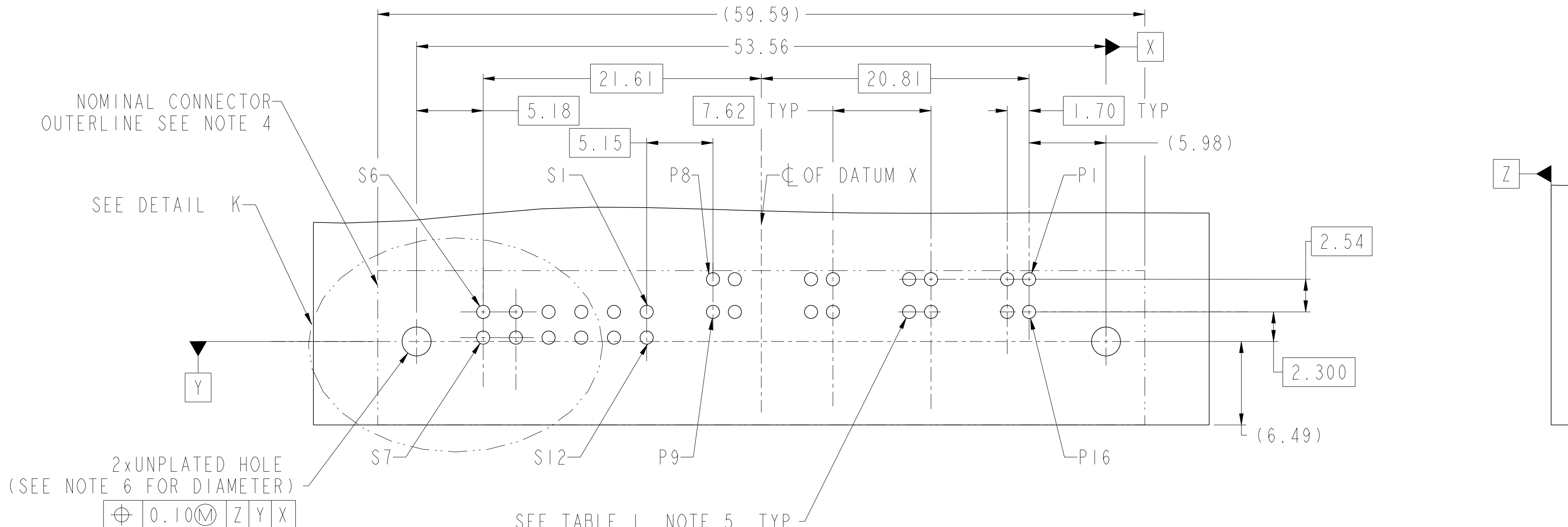
spec ref		-		dr		Feng Zheng		2017/04/18		projection						MM		size		A2		scale		3:1													
tolerance std		ISO 406 ISO 1101		eng		Feng Zheng		2017/05/05		chr		Tennis Liu		2017/05/05		appr		Pei-Ming Zheng		2017/05/05		product family		HPCE		ecn no		-		rel level		Released					
surface		ISO 1302		linear		0.X		±0.5		0.XX		±0.25		0.XXX		±0.10		angular		0°		±2°		Amphenol FCi		title		HPCE CTB R/A HEADER 12S8HP with short latch		dwg no		10143604		rev		A	
																								cat. no.		-		Product - Customer Drw		sheet 1 of 3							

		TABLE 1 (HPCE / SOLDER TAILS) PLATED THROUGH-HOLE REQUIREMENTS				
CONTACT TYPE	TOP LAYER DESCRIPTION	DRILLED HOLE DIAMETER	COPPER THICKNESS	TIN-LEAD THICKNESS	TIN THICKNESS	FINISHED HOLE DIAMETER
		1.10-1.16 (1.15 DRILL)	0.025 - 0.050	0.005 - 0.015	--	0.94 - 1.10
		1.10-1.16 (1.15 DRILL)	0.025 - 0.050	--	0.9 - 1.5um	0.94 - 1.10
		1.10-1.16 (1.15 DRILL)	0.025 - 0.050	--	--	0.94 - 1.10



spec ref	-	dr	Feng Zheng	2017/04/18	projection	MM	size	A2	scale	3:1
tolerance std	ISO 406 ISO 1101	eng	Feng Zheng	2017/05/05	chr	Terris Liu	2017/05/05	ecn no	-	
surface	ISO 1302	appr	Pei-Ming Zheng	2017/05/05	product family	HPCE	rel level	Released		
		linear	0.X	±0.5	Amphenol FCI		title	HPCE CTB R/A HEADER	dwg no	10143604
			0.XX	±0.25				12S8HP with short latch		rev
		angular	0°	±2°						A
				cat. no.	-	Product - Customer Drw		sheet 2 of 3		

Amphenol FCI

© 2016 APCI

PRODUCT PART NUMBER

10143604-□□□□□ LF

BASE PART NUMBER

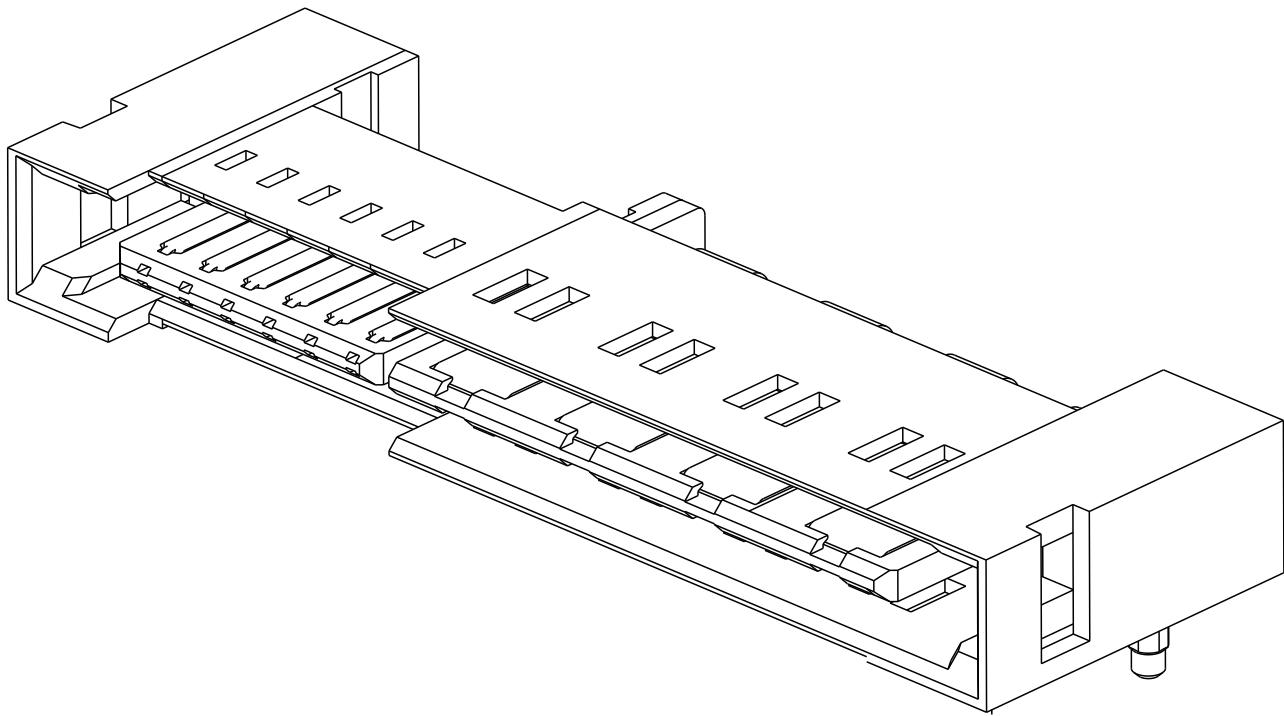
CONTACT AREA PLATING :  
2: GXT PLATING OVER NI

DIM "A", TAIL LENGTH  
1: 2.60±0.25mm (PCB THK 1.57±0.13mm)  
2: 3.25±0.25mm (PCB THK 2.36±0.13mm)

FIRST MATE LAST BREAK PIN POSTION  
000: ALL PINS ARE LONG PINS

NOTES:

1.
- PART NUMBER AND DATE CODE TO BE MARKED ON THIS SURFACE.  
THE MARK CAN BE OMITTED IF THERE IS NOT ENOUGH SPACE ON THIS SURFACE.
2.
- CONNECTOR MATERIALS:  
HOUSING: HIGH TEMPERATURE THERMAL PLASTIC WITH GLASS FIBER, UL94V-0, BLACK  
CONTACT: HIGH PERFORMANCE COPPER ALLOY.
3.
- CONTACT FINISH REF: GS-12-1031 SECTION 5.2.
4.
- DENOTES CONNECTOR KEEP OUT ZONE.
5.
- ALL HOLE DIAMETERS ARE FINISHED HOLE SIZES.
6.
- MOUNTING HOLES ARE UNPLATED  
Ø2.25±0.05 FOR SOLDER TAILS
7.
- THE HOUSING WILL WITHSTAND EXPOSURE TO 245 °C PEAK TEMPERATUREFOR 10 SECONDS  
IN A WAVE SOLDER APPLICATION.
8.
- THIS PRODUCT MEETS EUROPEAN UNION DIRECTIVES AND OTHER COUNTRY REGULATIONS AS DESCRIBED IN GS-47-0004.
9.
- PRODUCT SPECIFICATION : GS-12-1031.  
APPLICATION SPECIFICATION : GS-20-0369  
PRODUCT PACKAGE SPECIFICATION: GS-14-2272.



spec ref -				dr Feng Zheng		2017/04/18		projection		MM		size A2		scale 3:1	
tolerance std				eng Feng Zheng		2017/05/05						ecn no -			
ISO 406				chr Terris Liu		2017/05/05						rel level Released			
ISO 1101				appr Pei-Ming Zheng		2017/05/05									
TOLERANCES UNLESS OTHERWISE SPECIFIED								product family HPCE							
surface		linear		0.X ±0.5		Amphenol FCI		title HPCE CTB R/A HEADER 12S8HP with short latch				dwg no 10143604		rev A	
ISO 1302		0.XX ±0.25													
		0.XXX ±0.10													
		angular 0° ±2°		cat. no. -		Product - Customer Drw						sheet 3 of 3			