

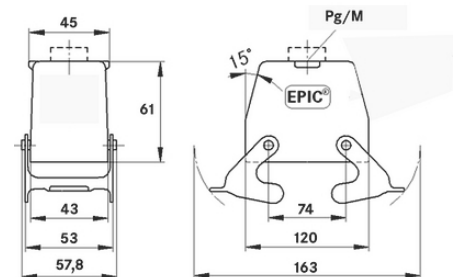
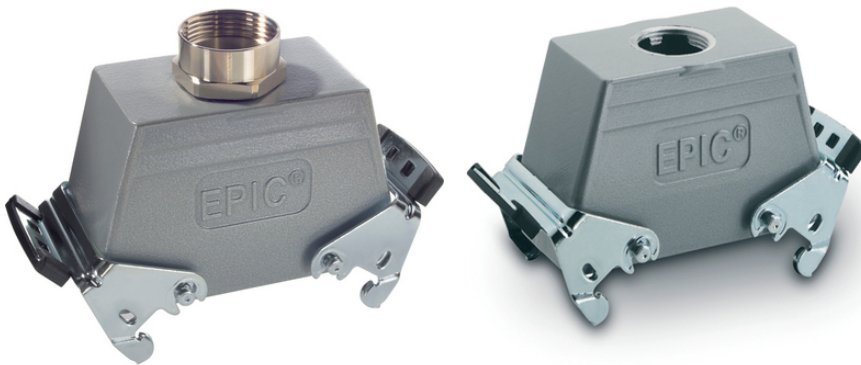
EPIC® H-B 24 TGB

Housing design H-B. The industry standard.

The universal metal housing consists of 2 double levers and a direct cable entry and can be supplied with or without a neck.

Info

Non-slip ridges for comfortable disconnecting
For connection with counterpart with integrated cover
Protection rating UL50E tested



Supplementary automation components from Lapp



Mechanical and plant engineering



Mechanical resistance



Robust



Waterproof

Benefits

Ideal for many applications due to a wide range of housings and inserts
Double lever version with 2 levers for increased safety

Application range

Plant engineering
Light & sound technology
Plastics industry

Last Update (15.05.2025)

©2025 Lapp Group - Technical changes reserved

Product Management www.lappkabel.de

You can find the current technical data in the corresponding data sheet.

PN 0456 / 02_03.16

EPIC® H-B 24 TGB

Product features

Hood, low version
Dual levers
Straight cable entry
Versions with / without neck

Technical Data

Classification ETIM 5:	ETIM 5.0 Class-ID: EC000437 ETIM 5.0 Class-Description: Housing for industrial connectors
Classification ETIM 6:	ETIM 6.0 Class-ID: EC000437 ETIM 6.0 Class-Description: Housing for industrial connectors
Material:	Housing: powder-coated aluminium alloy, grey Lever: zinc-plated steel Sealing: NBR
Protection rating:	IP 65 (latched) NEMA 250, UL50E: 12, 4 (latched)
VDE-tested:	Certified production control: VDE-REG. no.: B437 UL-tested: UL File Number: E75770
Temperature range:	-40 °C to +100 °C, short-term up to +125 °C

Note

Photographs and graphics are not to scale and do not represent detailed images of the respective products.
Prices are net prices without VAT and surcharges. Sale to business customers only.



EPIC® H-B 24 TGB

Article number	Article description	M	PG	Neck	Packaging unit
H-B housing: hood (straight cable entry, double lever)					
10122000	H-B 24 TGB 21	-	21	yes	5
10112000	H-B 24 TGB 29	-	29	yes	5
19122000	H-B 24 TGB M25	25	-	-	5
19112000	H-B 24 TGB M32	32	-	-	5