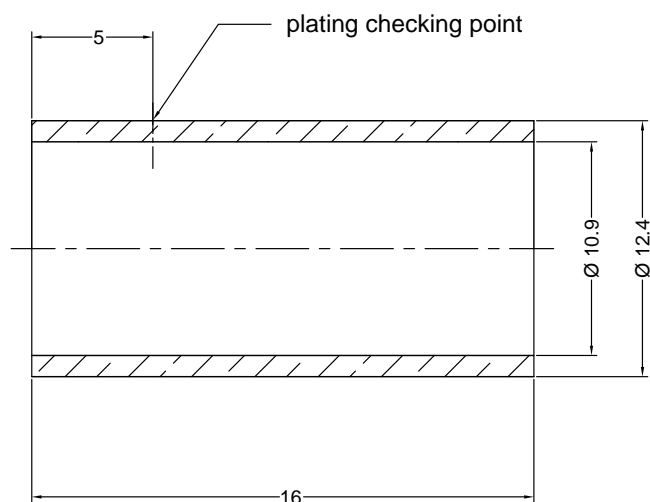


**NOTICE OF PROPRIETARY RIGHTS** THIS DOCUMENT CONTAINS CONFIDENTIAL DATA, INCLUDING TRADE SECRETS, PROPRIETARY TO TIMES MICROWAVE SYSTEMS. DISCLOSURE OF THIS DATA IS EXPRESSLY CONDITIONED UPON YOUR ASSENT THAT ITS USE IS LIMITED TO USE WITHIN YOUR COMPANY ONLY. ANY OTHER USE IS STRICTLY PROHIBITED WITHOUT THE PRIOR WRITTEN CONSENT OF TIMES MICROWAVE SYSTEMS.

SYM	REVISION DESCRIPTION	DFTM	DATE	APPD	APPD
A	RELEASED FOR PRODUCTION	Joslen	2014.12.25	TZ	2014.12.25
B	Modified description "CR-400-X"	Joslen	2015.07.23	TZ	2015.07.23



**Notes:**

1. Materials: copper; plating: Albaloy 80  $\mu$ ", thick over copper strike.
2. 10 PCS/PE package;

MATL:	UNLESS OTHERWISE SPECIFIED			DFTM.	Joslen	TIMES MICROWAVE SYSTEMS			
	ALL DIMENSIONS ARE IN mm MACHINED SURFACES FINISH 1.6 RMS MAX. REMOVE ALL BURRS 0.15X45° MAX. BREAK MACHINE CORNERS 0.15X45° D MAX. FILLET R. TOLERANCES ON DECIMALS .X $\pm 0.3$ .XX $\pm 0.15$ ANGLES $\pm 2^\circ$ FRACTIONS $\pm$ N/A			DATE	2015.07.23				
				CHKD	KG	<b>CR-400-X</b> Copper Ferrule for LMR-400 Series Cable Crimp Connector			
				DATE	2015.07.23				
USED ON: O				APPD	TZ				
SCALE: N/A	DWG SIZE A4	DO NOT SCALE DRAWING	CODE IDENT	68999	DATE	2015.07.23	SHT 1 OF 1	3190-6113	REV B