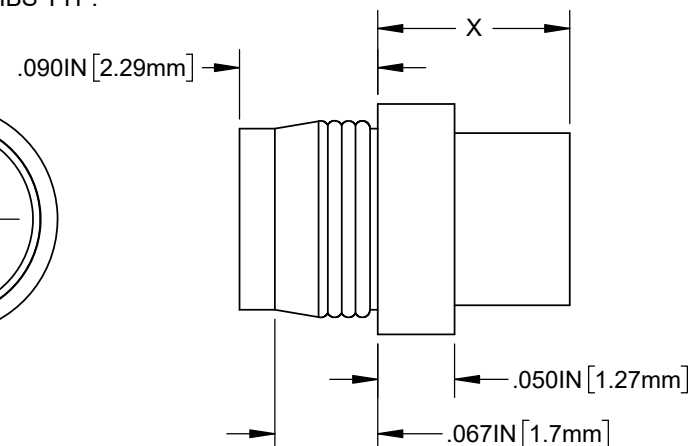
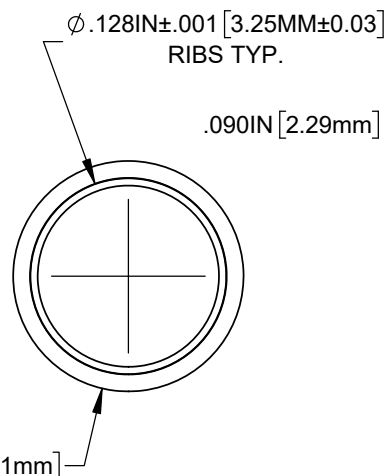
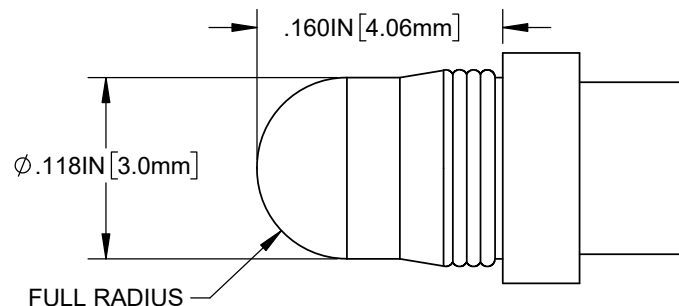
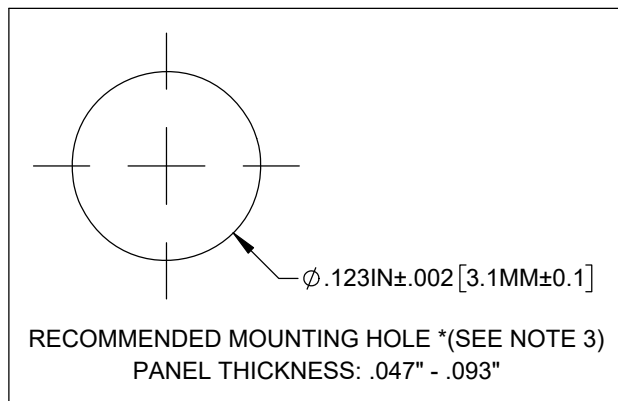


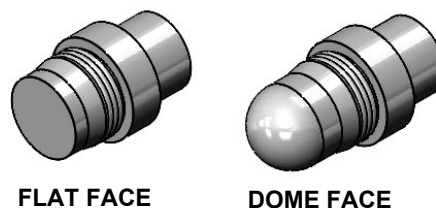
NOTES:

1. MATERIAL: POLYCARBONATE, UL94V-0, CLEAR.
2. OPERATING TEMPERATURE: -40°C to 120°C.
3. THE RECOMMENDED REFERENCED MOUNTING HOLE IS SPECIFIED FOR EASE OF ASSEMBLY AND IP54 APPLICATION REQUIREMENTS AS TESTED BY BIVAR. THE LIGHT PIPE(S) MUST BE INSERTED FIRMLY PERPENDICULAR INTO THE PANEL OR SURFACE'S HOLE OPENING WITH THE FLANGE FULLY FLUSHED AFTER PANEL INSTALLATION. ADJUSTMENTS TO THESE MOUNTING HOLE DIMENSIONS CAN BE MADE BASED ON AVAILABLE TOOLS, EQUIPMENT, PANEL MATERIAL, AND MFG CAPABILITIES TO PROPERLY FIT THE LIGHT PIPE(S) IN THE PANEL OR SURFACE FOR ITS INTENDED APPLICATION.



REVISIONS			
REV.	DESCRIPTION	DATE	APPROVED
B	REDEFINE CTQ	9/19/2024	A.V.
C	UPDATED DIMENSIONS	10/18/2024	A.V.
D	ADDED CAVITY INDICATOR	11/7/2024	A.V.
E	UPDATE PN LIST	1/14/2025	A.V.
E1	UPDATED MOUNTING HOLE NOTE	4/16/2025	A.V.



PART NO.	X= BODY LENGTH	LENS FACE
GLP1-100-F-54	0.100 (2.5mm)	FLAT
GLP1-125-F-54	0.125 (3.2mm)	FLAT
GLP1-188-F-54	0.188 (4.8mm)	FLAT
GLP1-250-F-54	0.250 (6.4mm)	FLAT
GLP1-350-F-54	0.350 (8.9mm)	FLAT
GLP1-375-F-54	0.375 (9.5mm)	FLAT
GLP1-500-F-54	0.500 (12.7mm)	FLAT
GLP1-625-F-54	0.625 (15.9mm)	FLAT
GLP1-750-F-54	0.750 (19.0mm)	FLAT
GLP1-1200-F-54	1.200 (30.5mm)	FLAT
GLP1-5MM-F-54	5MM (0.197in)	FLAT
GLP1-100-D-54	0.100 (2.5mm)	DOME
GLP1-125-D-54	0.125 (3.2mm)	DOME
GLP1-250-D-54	0.250 (6.4mm)	DOME
GLP1-313-D-54	0.313 (7.9mm)	DOME
GLP1-350-D-54	0.350 (8.9mm)	DOME
GLP1-375-D-54	0.375 (9.5mm)	DOME
GLP1-460-D-54	0.460 (11.7mm)	DOME
GLP1-500-D-54	0.500 (12.7mm)	DOME
GLP1-625-D-54	0.625 (15.9mm)	DOME
GLP1-750-D-54	0.750 (19.0mm)	DOME
GLP1-1200-D-54	1.200 (30.5mm)	DOME



**CUSTOMER USE DRAWING**

STANDARD TOLERANCE (UNLESS OTHERWISE SPECIFIED)		 <b>BIVAR</b> <sup>®</sup> 4 THOMAS, IRVINE, CA. 92618 TEL: (949) 951-8808 FAX: (949) 951-3974	
DECIMALS	ANGULAR		
.X ± .1	X° ± 1°		
.XX ± .01			
.XXX ± .005		<b>TITLE:</b> PRESS-FIT PANEL MOUNT LIGHT PIPE (D/F), IP-54	
DESIGNED: A. VALDEZ	DATE: 6/20/2024	<b>DRAWING NO:</b> GLP1-XXX-Y-ZZ	
REVISD: K. BARON	DATE: 4/16/2025	<b>REVISION:</b> E1	
CHECKED: R. PEREYRA	DATE: 4/16/2025	<b>SHEET SIZE</b> A	<b>CAGE CODE:</b> 32559
		<b>SCALE:</b> 8:1	<b>SHEET # 1 OF 1</b>
CAD GENERATED DOCUMENT, DO NOT MEASURE DRAWING			