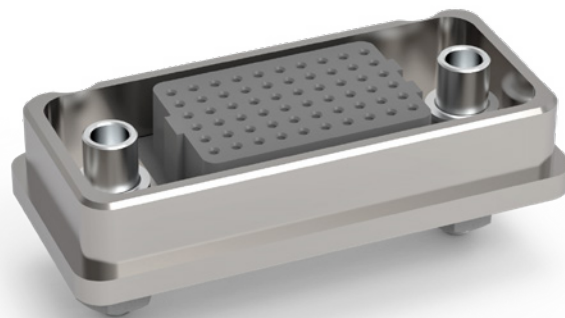


VRF — Vertical Rugged Female

VRF signal-integrity connectors are ruggedized versions of the standard VSF female connectors. These connectors can be used in extreme environmental conditions while maintaining high reliability and continuous performance
Pitch: 1.27 mm.



Sample Part Number Format: VRF-04-10-50-50-04-G



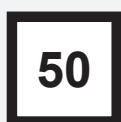
SERIES
Vertical Rugged
(Female) 1.27 mm



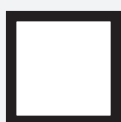
ROWS
04 – 4 Rows
05 – 5 Rows
06 – 6 Rows
08 – 8 Rows
10 – 10 Rows



COLUMNS
10 – 10 Columns
20 – 20 Columns
30 – 30 Columns
40 – 40 Columns
50 – 50 Columns



**CONTACT
PLATING**
50 – 50 μ " Au



TERMINATION
00 – Press-fit
01 – Paste-in-hole
02 – PTH 0.078"
03 – PTH 0.109"
04 – PTH 0.140"
05 – PTH 0.156"
06 – PTH 0.172"
10[†] – SMT - SN63PB37
Solder Dipped
11[†] – SMT - 42Sn/57.6Bi/0.4Ag
lead free, solder dipped



OPTIONS
Blank – No hardware[‡]
G – Guide socket[‡]
G1 – Guide socket[‡]
J – Turning jackscrew[‡]
J1 – Turning jackscrew[‡]
L – Locking screw[‡]
L1 – Locking screw[‡]
N – Fixed jacknut[‡]
N1 – Fixed jacknut[‡]
E – No hardware/EMI gasket[‡]
GE – Guide socket/EMI gasket[‡]
G1E – Guide socket/EMI gasket[‡]
JE – Turning jackscrew/EMI gasket[‡]
J1E – Turning jackscrew/EMI gasket[‡]
LE – Locking screw/EMI gasket[‡]
L1E – Locking screw/EMI gasket[‡]
NE – Fixed jacknut/EMI gasket[‡]
N1E – Fixed jacknut/EMI gasket[‡]

Notes:

See AirBorn spec ESL5001 for installation information.
Connector potting is standard.

¹Used for PC board thickness up to 0.125".

²Used for PC board thickness 0.125" up to 0.250".

[†]Surface Mount Termination only available on 4 Row vertical connectors.

[‡]No hardware supplied with blank hardware option connectors.

AirBorn can manufacture other configurations to your exact specifications.

RoHS Compliant (except for termination option 10); certificate of conformance available upon request with each shipment.

Please view document VRF-XX-XX-XX-XX-XX on airborn.com before part configuration for more product specification information.

NOTE: Please consult airborn.com to configure your part number and for the latest revision controlled drawing and technical data.

Reliable Contact Every Time

VerSI connectors feature a low-mating-force, high-reliability contact system with four points-of-contact.

The open-pin field design allows flexibility in termination schemes. Single-ended, differential pair, power, and ground are all available in one connector design.

