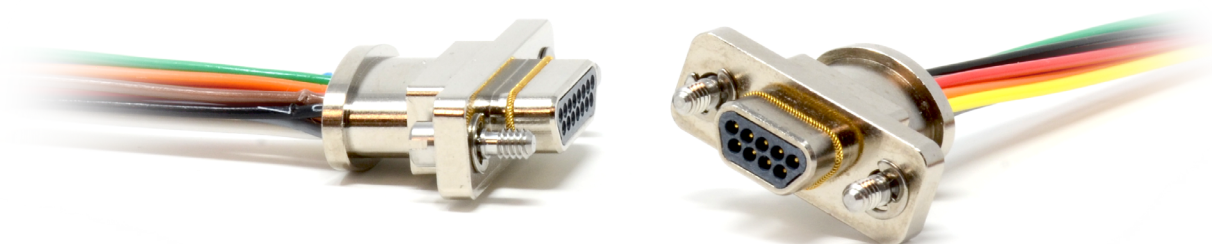




Space-saving, Microminiature Solutions with Integrated EMI Shielded Backshells



With advanced, open system digital cockpits, integrated avionics suites and communication systems, EMI shielding is critical to any connector design. In order to accommodate a more effective shielding performance, while reducing weight, components and improving space requirements, ITT Cannon expands its robust, wired / cabled Microminiature MDM series to include an EMI shielded, connector with fully integrated backshells.

The new design utilizes an EMI ground spring on the plug side connector as well as an integrated back shell for shield termination on the back end.

Features & Benefits

- Superior EMI protection with gold plated ground spring.
- Turnkey cable solution with customized wire lengths
- 9 - 51 contact positions
- Design to meet MIL-DTL-83513 requirements
- 0.050" center-to-center contact spacing
- Current rating: 3A
- 500 mating cycles
- Wire Gauge 24 - 38 (AWG)

Markets



MDME - Micro-D with Integrated Backshells

How to Order - MDM with Integrated Backshells

| | | | | | | | | | | | | |
|----------------------------------|---------|---|----|---|---|---|---|---|---|---|---|------|
| | RMDME10 | - | 25 | P | 0 | P | - | I | 6 | P | G | A174 |
| Series | | | | | | | | | | | | |
| Contact Arrangements | | | | | | | | | | | | |
| Contact Type | | | | | | | | | | | | |
| Wire Gauge | | | | | | | | | | | | |
| Wire Type | | | | | | | | | | | | |
| Wire Color | | | | | | | | | | | | |
| Wire Length | | | | | | | | | | | | |
| Mounting Hardware (Shell Flange) | | | | | | | | | | | | |
| EMI Ground Spring | | | | | | | | | | | | |
| Shell Finish Modification Codes | | | | | | | | | | | | |

Series

- MDME10 - MDM with Integrated Backshells, wired assemblies
RMDME10 - RoHS Compliant**

Contact Arrangements

9, 15, 21, 25, 31, 37, 51

Contact Type

- S - Socket (Receptacle)
P - Pin (Plug)

Wire Gauge (AWG)

- 0 - #30 GAGE
4 - #24 GAGE
6 - #26 GAGE
8 - #38 GAGE

Wire Type

- P - Teflon (PTFE) Wire Per MIL-W-16878/4
T - Teflon Wire Per MIL-W-22759/11
E - Cross-Link Tefzel Wire Per MIL-W-22759/33

Wire Color

- W - White
Y - Yellow
S - Color- Code Per MIL-STD 681
T - 10 Color Repeat

Overall Wire Length (Inches)

One Inch Minimum and Must be Rounded to the Nearest Whole Inch

Standard Lengths (inches) - 6, 12, 18, 24, 36

Mounting Hardware (Shell Flange)

- MIL-DTL-83513/5 Hardware
M7 - Jackpost shell size 9-51
M5 - Jackscrew (slotted head)
Low Profile shell size 9-51
M2 - Jackscrew (Allen head)
Low Profile shell size 9-51

Commercial Hardware

- P - Jackpost *
L - Jackpost - Low Profile*
F - Float Mount*
B - No Hardware (standard)
.091 dia. hole shell size 9-51

EMI Ground Spring Option (Pin Type Only)

- F - No Ground Spring
G - Ground Spring Installed
Leave Blank for Socket

Shell Finish Modification Codes

- None - Yellow Chromate/Cadmium over Nickel (Standard)
A174 - Electroless Nickel (RoHS Compliant)
A172 - Gold Over Nickel (RoHS Compliant)
A141 - Iridite/Alodine
A30 - Black Anodize

(For special modification codes, consult customer service.)

*Factory Installed

**If RoHS is required, you must use the "RMDME10" suffix for the series, the termination tail will be gold plated; not tinned. RoHS requested parts must include A174 or A172 plating modifiers.



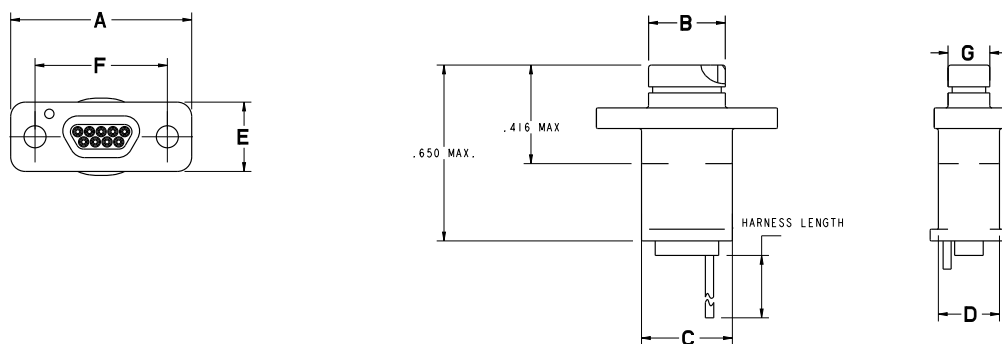
Dimensions shown in mm
Specifications and dimensions subject to change

www.ittcannon.com

Micro-D with Integrated Backshells

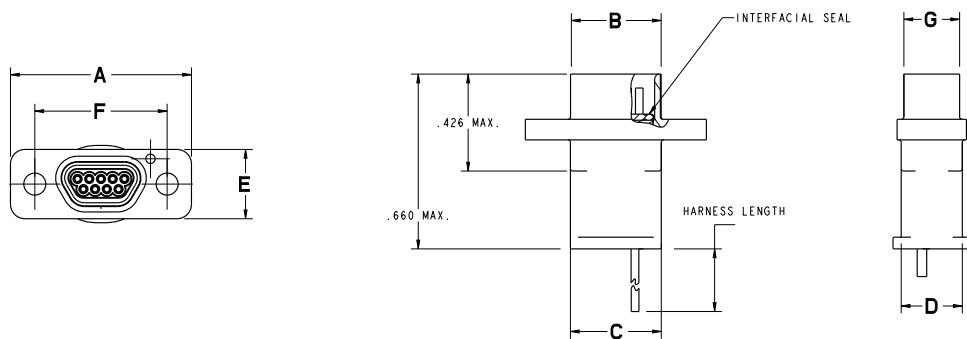
MDME

MDME10 Series Shell Size 9 - 51 Plug



| Shell Size | A MAX | B MAX | C MAX | D MAX | E MAX | F ±.005 | G MAX |
|------------|----------|----------|----------|----------|----------|------------|----------|
| 9 | .785 | .334 | .400 | .270 | .380 | .565 | .185 |
| 15 | .935 | .484 | .550 | | | .715 | |
| 21 | 1.085 | .634 | .700 | | | .865 | |
| 25 | 1.185 | .734 | .800 | | | .965 | |
| 31 | 1.335 | .884 | .950 | | | 1.115 | |
| 37 | 1.485 | 1.034 | 1.100 | .310 | .351 | 1.265 | .228 |
| 51 | 1.435 | .984 | 1.050 | | | 1.215 | |

MDME10 Series Shell Size 9 - 51 Receptacle



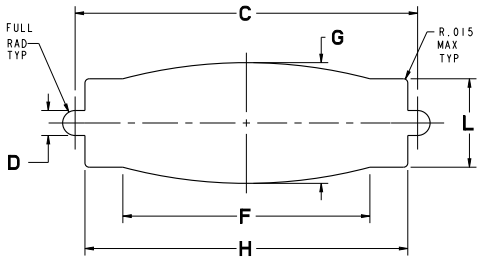
| Shell Size | A MAX | B MAX | C MAX | D MAX | E MAX | F ±.005 | G MAX |
|------------|----------|----------|----------|----------|----------|------------|----------|
| 9 | .785 | .402 | .400 | .270 | .380 | .565 | .253 |
| 15 | .935 | .552 | .550 | | | .715 | |
| 21 | 1.085 | .702 | .700 | | | .865 | |
| 25 | 1.185 | .802 | .800 | | | .965 | |
| 31 | 1.335 | .952 | .950 | | | 1.115 | |
| 37 | 1.485 | 1.102 | 1.100 | .310 | .351 | 1.265 | .296 |
| 51 | 1.435 | 1.052 | 1.050 | | | 1.215 | |

Dimensions shown in mm
Specifications and dimensions subject to change

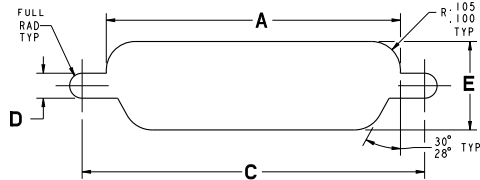
Micro-D with Integrated Backshells

MDME

Panel Cutout Dimensions



Front Mount



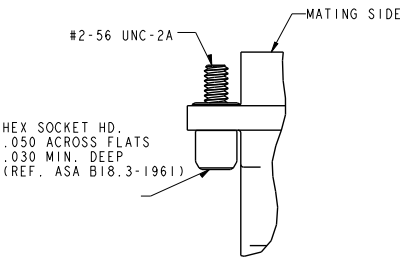
Rear Mount

| Shell Size | A + .004 - .000 | C + .005 - .000 | D + .005 - .000 | E + .004 - .000 | F + .005 - .000 | G + .004 - .000 | H + .005 - .000 | L + .004 - .000 |
|------------|-----------------------|-----------------------|-----------------------|-----------------------|-----------------------|-----------------------|-----------------------|-----------------------|
| 9 | .401 | .570 | .089 | .252 | .300 | .400 | .500 | .271 |
| 15 | .551 | .720 | | | .420 | | .650 | |
| 21 | .701 | .870 | | | .550 | | .800 | |
| 25 | .801 | .970 | | | .650 | | .900 | |
| 31 | .951 | 1.120 | | | .790 | | 1.050 | |
| 37 | 1.101 | 1.270 | | | .950 | | 1.200 | |
| 51 | 1.051 | 1.220 | | .295 | .800 | .430 | 1.150 | .315 |

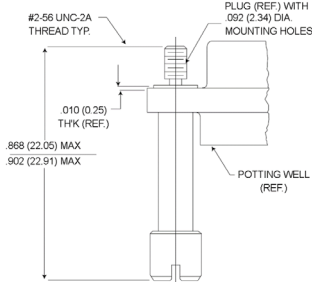
Mounting Hardware

If ordered connector without hardware or as replacement hardware. This hardware supplied in kits unassembled (2 pieces of each item).

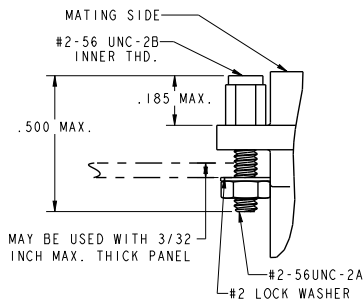
Low Profile Jackscrew



High Profile Jackscrew



Jackpost



| Hardware Style | Description | ITT Part Number | MIL-Spec Part Number |
|------------------------|------------------------|-----------------|----------------------|
| Low Profile Jackscrew | Slotted Head Jackscrew | 320-9508-025 | M83513/5-05 |
| Low Profile Jackscrew | Allen Head Jackscrew | 320-9508-026 | M83513/5-02 |
| High Profile Jackscrew | Slotted Head Jackscrew | 320-9508-027 | M83513/5-06 |
| High Profile Jackscrew | Allen Head Jackscrew | 320-9508-028 | M83513/5-03 |
| Jackpost | | 320-9508-033 | M83513/5-07 |

Connect with your ITT Cannon representative today or visit us at ittcannon.com

Follow us 

NORTH AMERICA

USA - Irvine, CA
+1.800.854.3028
MEXICO - Nogales
+52.631.3110050

EUROPE

GERMANY - Weinstadt
+49.7151.699.0
UK - Basingstoke
+44.1256.347400

ITALY - Lainate
+39.02938721
FRANCE
+33.1.60.04.93.93

ASIA PACIFIC

SINGAPORE
+65 66974205
JAPAN - Kanagawa
+81.462.57.2010

KOREA
+82.2.702.7111
CHINA - Shenzhen City
+86.755.2726.7888

HONG KONG
+852.2732.2720