

6

5

4

3

2

1

D

D

C

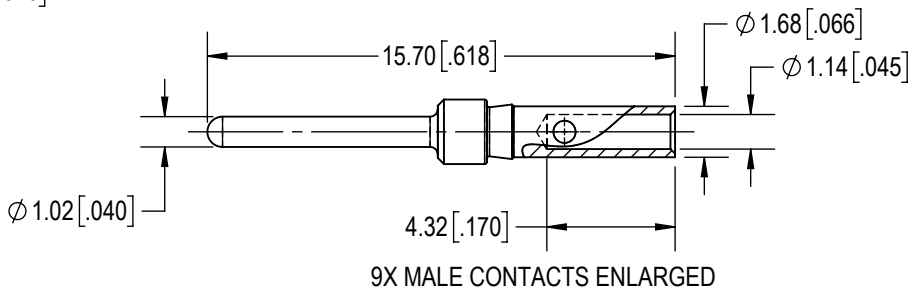
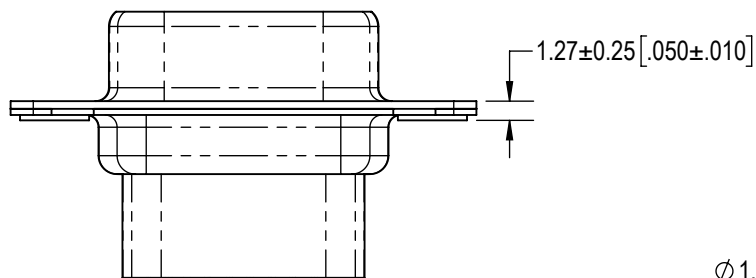
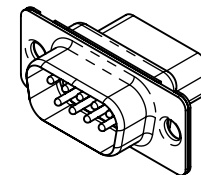
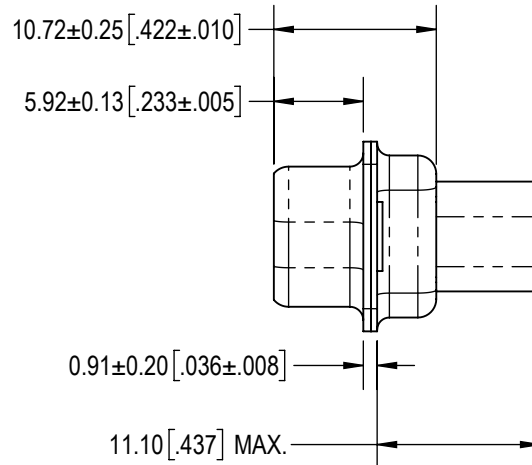
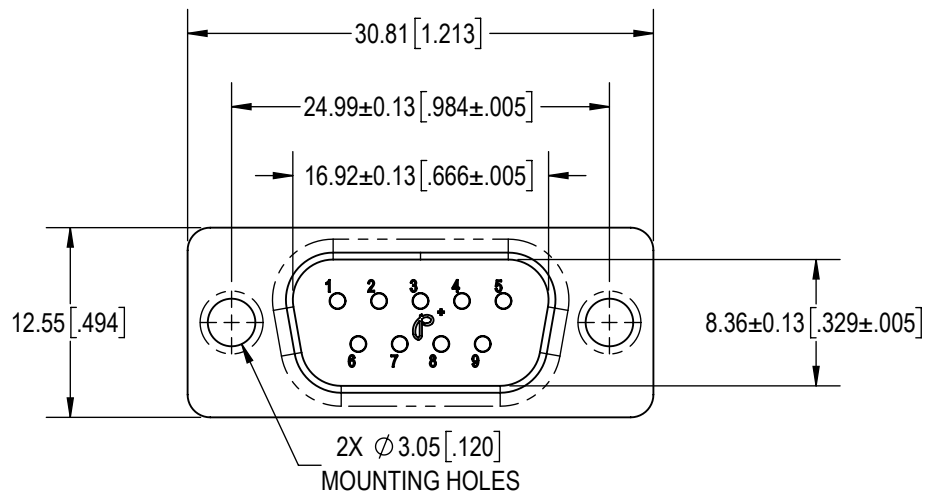
C

B

B

A



A



9X MALE CONTACTS ENLARGED

**NOTES:**

- MATERIAL AND FINISHES:**  
INSULATOR: GLASS FILLED PBT POLYESTER, UL 94V-0, COLOR: BLACK.  
CONTACTS: PRECISION MACHINED COPPER ALLOY, GOLD FLASH OVER NICKEL PLATE.  
SHELLS: STEEL, ZINC PLATED.
- DETAILED PRODUCT, MECHANICAL AND ELECTRICAL INFORMATION IS AVAILABLE IN THE LATEST STANDARD DENSITY D-SUB PRODUCT PUBLICATION AT [CONNECTPOSITRONIC.COM](http://CONNECTPOSITRONIC.COM)
- CRIMPING TOOL INFORMATION IS AVAILABLE AT [WWW.CONNECTPOSITRONIC.COM/CrimpToolCrosslist](http://WWW.CONNECTPOSITRONIC.COM/CrimpToolCrosslist).

|   |                              |           |  |  |   |              |
|---|------------------------------|-----------|--|--|---|--------------|
| BY<br>KKP   |                              | CHK<br>ND | 3RD ANGLE<br> |  | <div>POSITRONIC BELIEVES THE DATA ON THE DRAWING TO BE RELIABLE. THE USER EMPLOYS SUCH INFORMATION AT HIS OWN DISCRETION AND RISK. POSITRONIC ASSUMES NO RESPONSIBILITY FOR RESULTS OBTAINED OR DAMAGES INCURRED FROM USE OF SUCH INFORMATION IN WHOLE OR IN PART.</div>  <div>Positronic®<br/>CONNECTPOSITRONIC.COM</div> |              |
| APR<br>AB   | RELEASED DATE:<br>2025-04-14 |           | SCALE<br>NTS   |  |   |              |
| TOLERANCES<br>±0.03mm [.001 INCHES]FOR MALE CONTACT MATING DIAMETERS<br>±0.08mm [.003 INCHES]FOR CONTACT TERMINATION DIAMETERS<br>±0.13mm [.005 INCHES]FOR ALL OTHER DIAMETERS<br>±0.38mm [.015 INCHES]FOR ALL OTHER DIMENSIONS<br>±5° FOR ALL ANGLES<br>DIMENSIONS ARE IN MILLIMETERS [INCHES] |                              |           | PART NUMBER<br>SD9M10000   |  |   | SERIES<br>SD |
|   |                              |           | TITLE<br>SD9M10000   |  |   |              |
| CREATED ON:<br>2025-04-13   |                              |           | SHEET<br>SHEET 1 OF 1  |  | REV<br>A  |              |