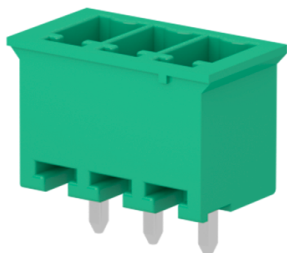


CTM040P8 - Header

<https://www.sauro.net/product/CTM040P8>



Number of poles: 4, 11A, 1.5mm², 300V, Pitch 3,5 mm, Polarized, Connection Angle 0, Green (RAL 6032), Soldering technology Wave, UL, VDE, IMQ, CSA

General data

Number of poles	4
Number of levels	1
Sides configuration	Polarized
Pitch	3,5 mm
Voltage	300 V
Current	11 A
Housing composition	Monolithic

Features

Operating temperature range	-40°C ÷ 105°C
Climatic category	-40/105/21 according to EN60068-1
Contact resistance	<15 mOhm
Insulation resistance	>1 GOhm

Certifications

CSA (n.LR 102896)

Rated voltage	300 V
Nominal current	11 A
Insulating category	I

<https://www.sauro.net/product/CTM040P8>

CTM040P8 - Header

<https://www.sauro.net/product/CTM040P8>

[IMQ \(n.CA02.00901\)](#)

Rated voltage	150 V		
Nominal current	11 A		
Insulating category	I		
Overvoltage category/Pollution degree	III/3	III/2	II/2
Impulse voltage	2.5kV	2.5kV	2.5kV
Rated voltage	150V	150V	300V
Insulation voltage	160V	160V	320V
Maximum temp usage	110		

[UL \(n.E167473\)](#)

Usage group	B	C	D*
Rated voltage	300 V	-	300 V
Nominal current	11 A		

* These limited ratings are applicable to a terminal block for use in or with industrial control equipment whereby the load on any single circuit of the terminal block does not exceed 15A at 51-150V, 10A at 151-300V, or 5A at 301-600V, or the maximum ampere rating, whichever is less.

[VDE \(n.40013398 Reg.-Nr. 134066\)](#)

Rated voltage	130 V
Nominal current	11 A
Insulating category	I
Maximum temp usage	85

Materials

Terminal contact	Nickel and tin on copper alloy
Insulating housing material	PA Polyamide
Insulating material group	I (CTI \geq 600V)
Flammability rating according to UL94	V0
Glow Wire Flammability Index GWFI according to EN60695-2-12	850°C
Glow Wire Ignition Temperature GWIT according to EN60695-2-13	775°C

Available colors

Green	similar toRAL 6032
Dark green	similar to RAL 6017
Black	similar to RAL 9005
Light gray	similar to RAL 7035
Dark gray	similar to RAL 7040

<https://www.sauro.net/product/CTM040P8>

CTM040P8 - Header

<https://www.sauro.net/product/CTM040P8>

Orange	similar to RAL 2003
Blue	similar to RAL 5012
Brown	similar to RAL 8028
Yellow	similar to RAL 1018
White	similar to RAL 9001
Red	similar to RAL 3017
Another color	on demand

<https://www.sauro.net/product/CTM040P8>

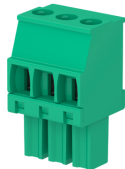
CTM040P8 - Header

<https://www.sauro.net/product/CTM040P8>

Usable with



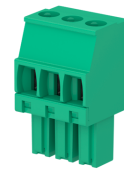
CTF04008



CKF040L8



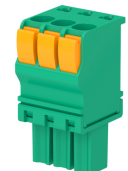
CKF040M8



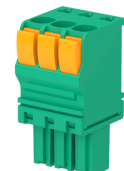
CKF040R8



CKF040W8



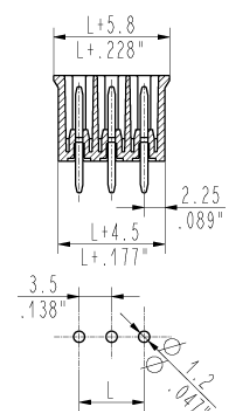
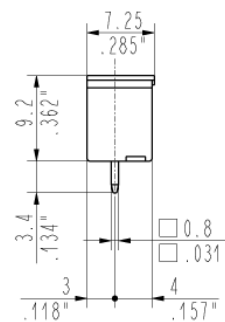
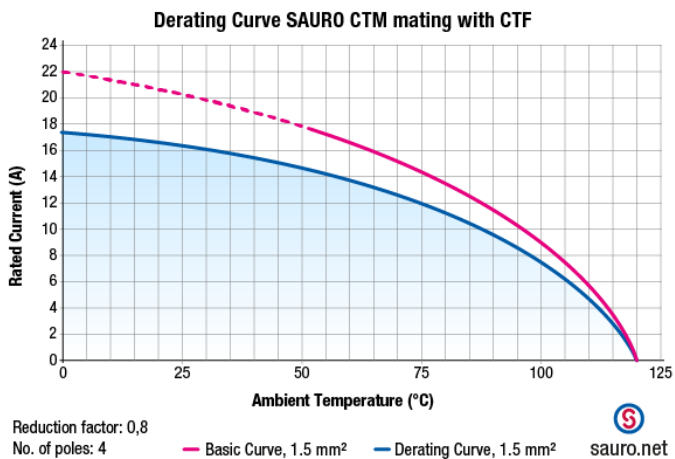
CBF040L8



CBF040R8



CFF04008



<https://www.sauro.net/product/CTM040P8>