

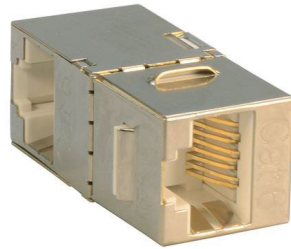
Insert Modular Jack 8p8c (RJ45, Ethernet) To Modular Jack 8p8c (RJ45, Ethernet) Silver, Right Angle

**RoHS
Compliant**

Stock No.: 9134564J0091

FEATURES

- RJ45 F/F, Right Angle
- Panel Mount
- Shielded
- Gold-plated



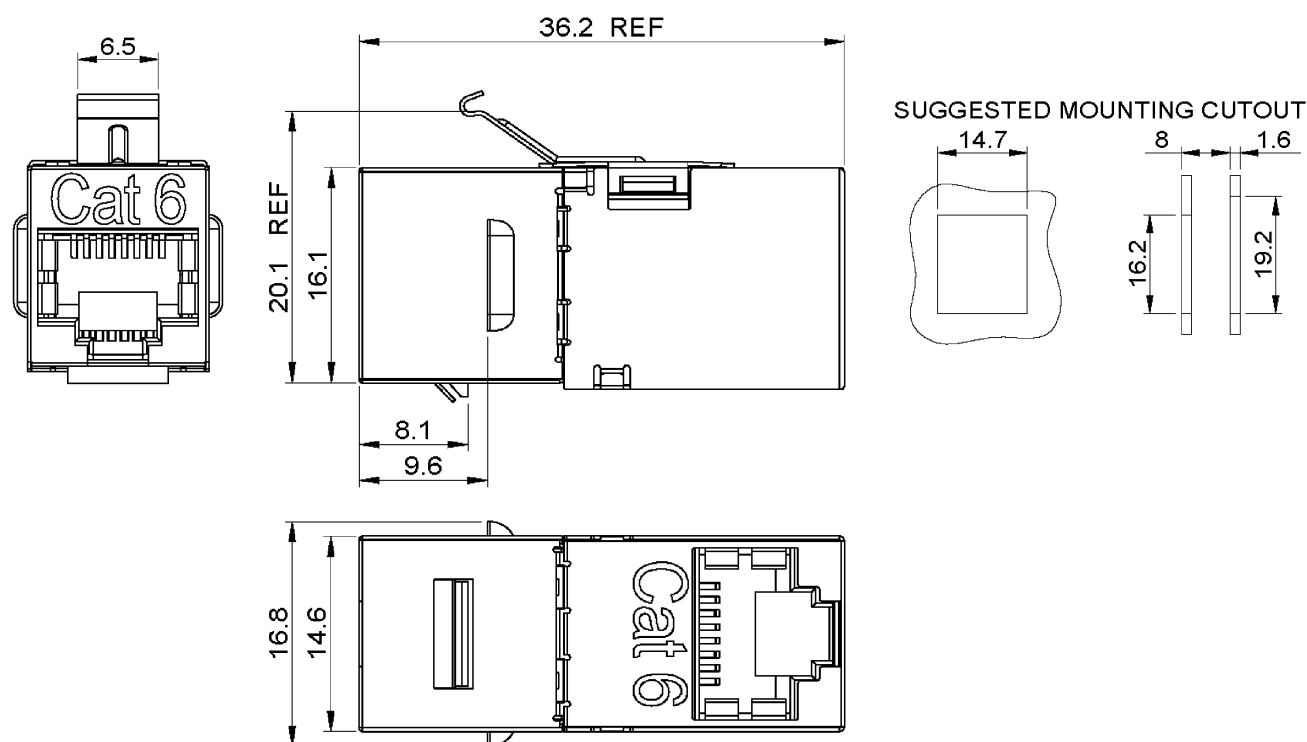
Product Description

Cat.6 RJ45 connector is designed to work specifically with cat.6 cable. The RJ45 contacts are gold plated and the wire alignment insert provides termination without any need of tools. The Housing of the connectors is fully shielded to avoid corrosion and to protect from EMI.

General Specifications

Attribute	Value
Category	6
Mounting Type	Wall Plates, Surface Mount Boxes, Patch Panel
Configuration	8 Position, 8 Wire, RJ45
Wiring Code	T568A/B
Adapter End	RJ45 Female
Adapter End	RJ45 Female
Contact Material	Gold Plated Phosphor Bronze
Specifications	-
Shielding	Shielded
Color	Silver
Operation Temperature	-10°C TO 60°C
Wire Gauge	N/A
Cable Jacket Diameter	N/A
Current Rating (Amps)	1.5A

Product Drawing



Dimensions: Millimeters (Inches)

Part Number Table

Part Number	Description
9134564J0091	Insert Modular Jack 8p8c (RJ45, Ethernet) To Modular Jack 8p8c (RJ45, Ethernet) Silver

Important Notice: This data sheet and its contents (the "Information") belong to the members of the EASE group of companies (the "Group") or are licensed to it. No license is granted for the use of it other than for information purposes in connection with the products to which it relates. No license of any intellectual property rights is granted. The Information is subject to change without notice and replaces all data sheets previously supplied. The Information supplied is believed to be accurate, but the Group assumes no responsibility for its accuracy or completeness, any error in or omission from it or for any use made of it. Users of this data sheet should check for themselves the Information and the suitability of the products for their purpose and not make any assumptions based on information included or omitted. Liability for loss or damage resulting from any reliance on the Information or use of it (including liability resulting from negligence or where the Group was aware of the possibility of such loss or damage arising) is excluded. This will not operate to limit or restrict the Group's liability for death or personal injury resulting from its negligence. EASE is the registered trademark of Ease Electronics Co., Limited 2019.