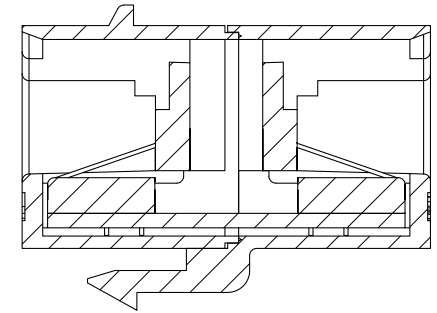
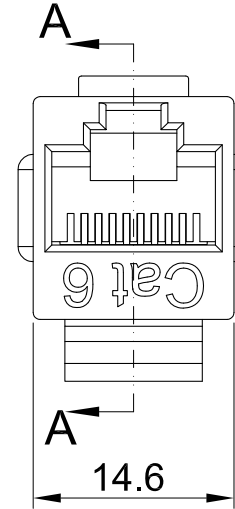
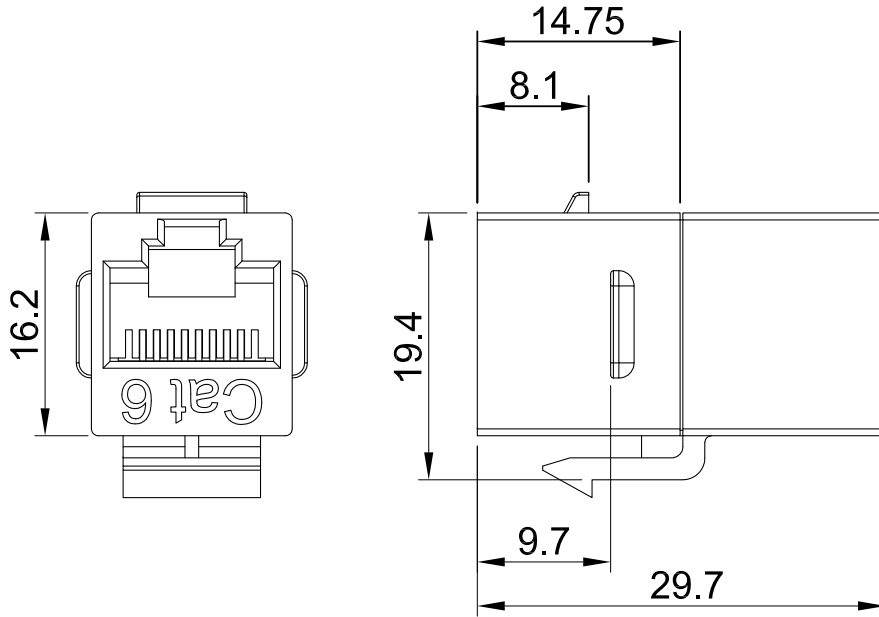


THE INFORMATION CONTAINED IN THIS DRAWING IS THE SOLE PROPERTY OF EASE ELECTRONICS. ANY REPRODUCTION IN PART OR WHOLE WITHOUT THE WRITTEN PERMISSION OF EASE ELECTRONICS IS PROHIBITED.

REV	DESCRIPTION	DATE	APPROVED
A	INITIAL RELEASE	8/6/25	CHILLY. L



SECTION A-A

Part Number Table

PART NUMBER	DESCRIPTION	DWG. NO.
RJ45-6C-BK	Cat.6 RJ45 Inline Coupler unshielded, Black	J0079
RJ45-6C-BL	Cat.6 RJ45 Inline Coupler unshielded, Blue	J0080
RJ45-6C-GN	Cat.6 RJ45 Inline Coupler unshielded, Green	J0081
RJ45-6C-GY	Cat.6 RJ45 Inline Coupler unshielded, Gray	J0082
RJ45-6C-OR	Cat.6 RJ45 Inline Coupler unshielded, Orange	J0083
RJ45-6C-PU	Cat.6 RJ45 Inline Coupler unshielded, Purple	J0084
RJ45-6C-RD	Cat.6 RJ45 Inline Coupler unshielded, Red	J0085
RJ45-6C-WT	Cat.6 RJ45 Inline Coupler unshielded, White	J0086
RJ45-6C-YW	Cat.6 RJ45 Inline Coupler unshielded, Yellow	J0087

MATERIAL

Coupler Housing: ABS high-impact thermoplastic
Spring Wire: Phosphor Bronze, T=0.3mm, 50u" Gold over 100u" Nickel undercoat Contact
Holder: PBT high-impact thermoplastic

Physical Characteristics

Insertion Life: 750 Mating cycles
Contact Force: 100 Grams
Plug Retention Force: 11 LBF Min.
Operating Temperature Range: -10 C to 60 C
Storage Temperature Range: -40 C to 68 C
Humidity: 10% ~ 90% RH

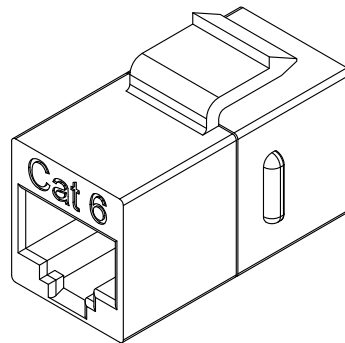
ELECTRICAL


Insulation Resistance: 500 mΩ
Dielectric Withstanding Voltage: 1000 V
DC Current Rating: 1.5 Amps
DC Resistance: 0.1 Ω
Contact Resistance: 20 mΩ

MountingType

Cable Mount, Wall Plate, Patch Panel

UNIT: MM



UNLESS OTHERWISE SPECIFIED, DIMENSIONS ARE IN INCHES [mm] OVERALL CABLE LENGTH TOLERANCE: ≤12 [305] = +1 [25] / -0 >12 [305] ≤60 [1524] = +2 [51] / -0 >60 [1524] ≤120 [3048] = +4 [102] / -0 >120 [3048] ≤300 [7620] = +6 [152] / -0 >300 [7620] = +5% / -0% ALL OTHER DIMENSIONAL TOLERANCES: .X = .3 .XX = .15	APPROVALS	DATE	<div>EASEelectronics</div> <div>Ease Electronics Co., Limited</div> <div>Zone A, 2nd Floor, Bldg A, No.45, Qianjin 3rd Rd, Tanzhou, 528467</div> <div>Zhongshan, Guangdong, China. +86-756-58 8881 0</div>				
	DRAWN BY LUKE. L	6/6/2025					PART NUMBER RJ45-6C-GN
	CHECKED BY TILLY. H	6/6/2025					
	APPROVED BY CHILLY. L	7/6/2025					
	CONFIGURATION DETAILS OF UNDIMENSIONED FEATURES MAY VARY		PRODUCT DESCRIPTION Cat.6 RJ45 Inline Coupler unshielded, Green				
	COLOR VARIATIONS MAY OCCUR		ID J	SERIES NO. RJ45-C	DWG. NO. J0081	REV. J	
	REF	SCALE: NONE		CAD FILE: J0081		SHEET 1 OF 1	