

## Electrical Specifications

Voltage Rating	DC12V (Max DC16V)
Current Rating	Min: 10mA (Resistor) Max: 6W/12V (Lamp)
Voltage Drop	By the rated load: 0.15V Max(before test) 0.25V Max(after test)
Insulation Resistance	More than 1MΩ(measured by 500V)
Chattering	60ms Max



## Environment

Operating Temperature Range	-10 ~ +65°C
Storage Temperature Range	-30 ~ +85°C

## Externals

Illumination Color, Luminance	Green, Red, Amber
-------------------------------	-------------------

## Features

- Push switch with LED Illumination
- Surface design or illumination are visible regardless of day time/night time.
- Lens color, Symbol mark can be customized.
- Both Momentary and Alternate switch are available.

## Mechanical Specifications

Type	Momentary, Alternate
Push Stroke	Outline dimension is described
Operating Physical Force	9.8 ± 3.9N
Waterproof Type	Panel waterproof (JIS D0203 S2)

# LED Switches

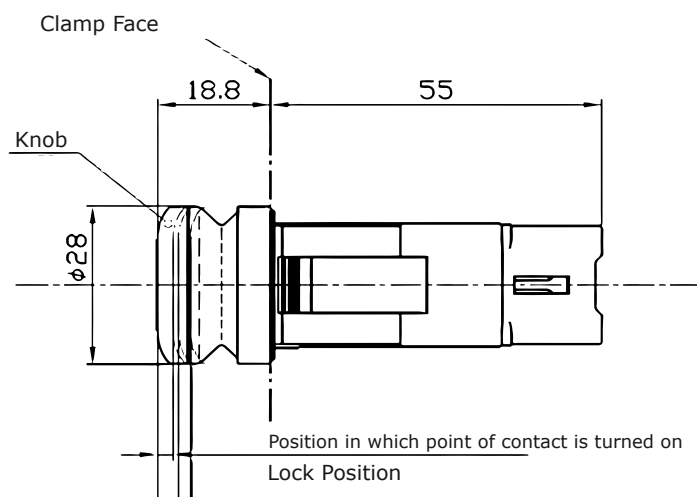
## Round Illuminated Pushbutton



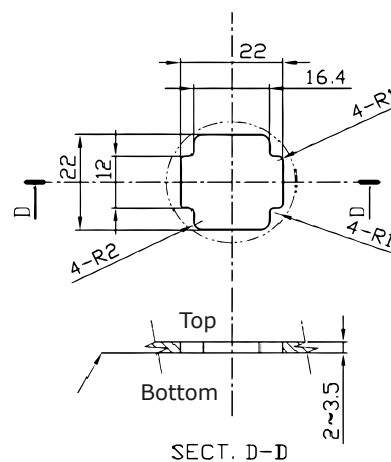
### Dimensions

[Millimeters]

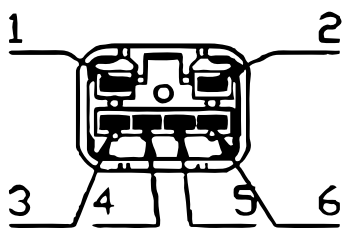
Outline Dimension



Mounting Cut Outs  
(Recommended Switch Spacing)



Circuit Diagram



SW Connector  
6240-1120  
(Mating: 6240-5160)

