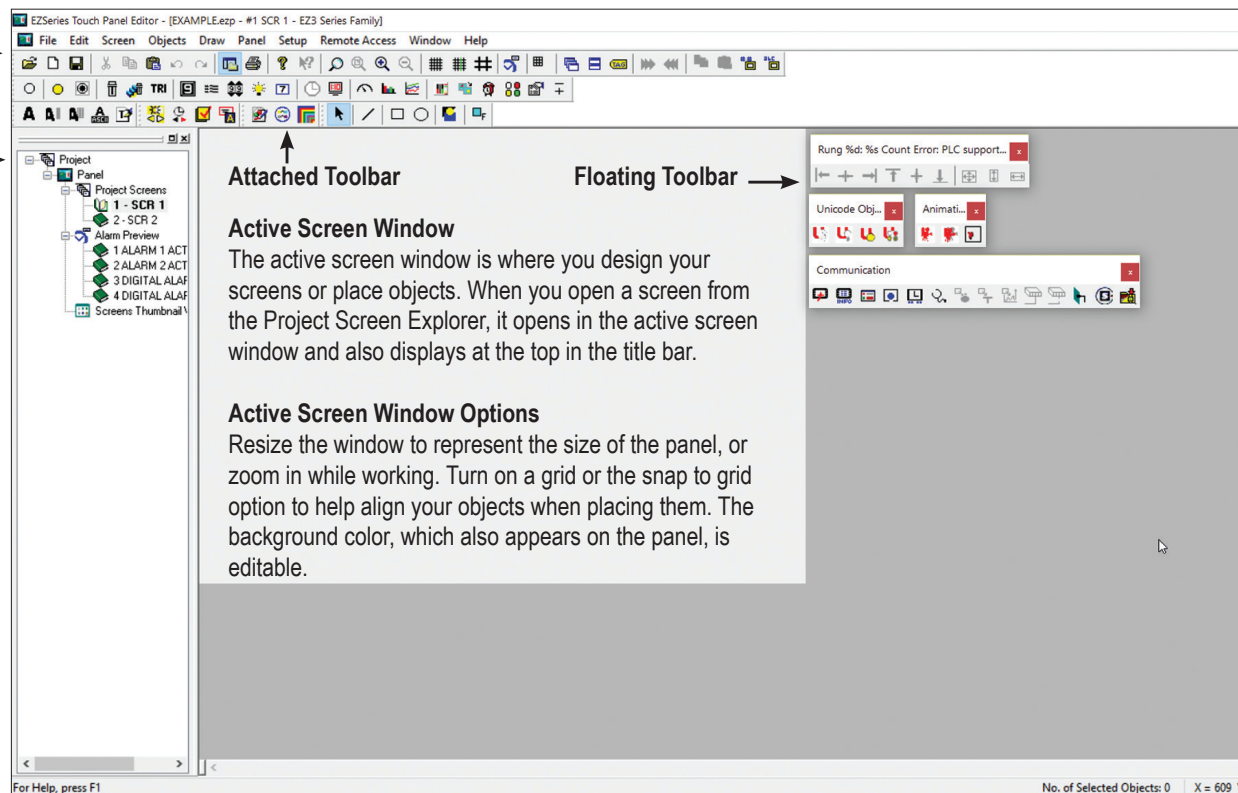


EZTouch® Programming Software

Main Menu Bar

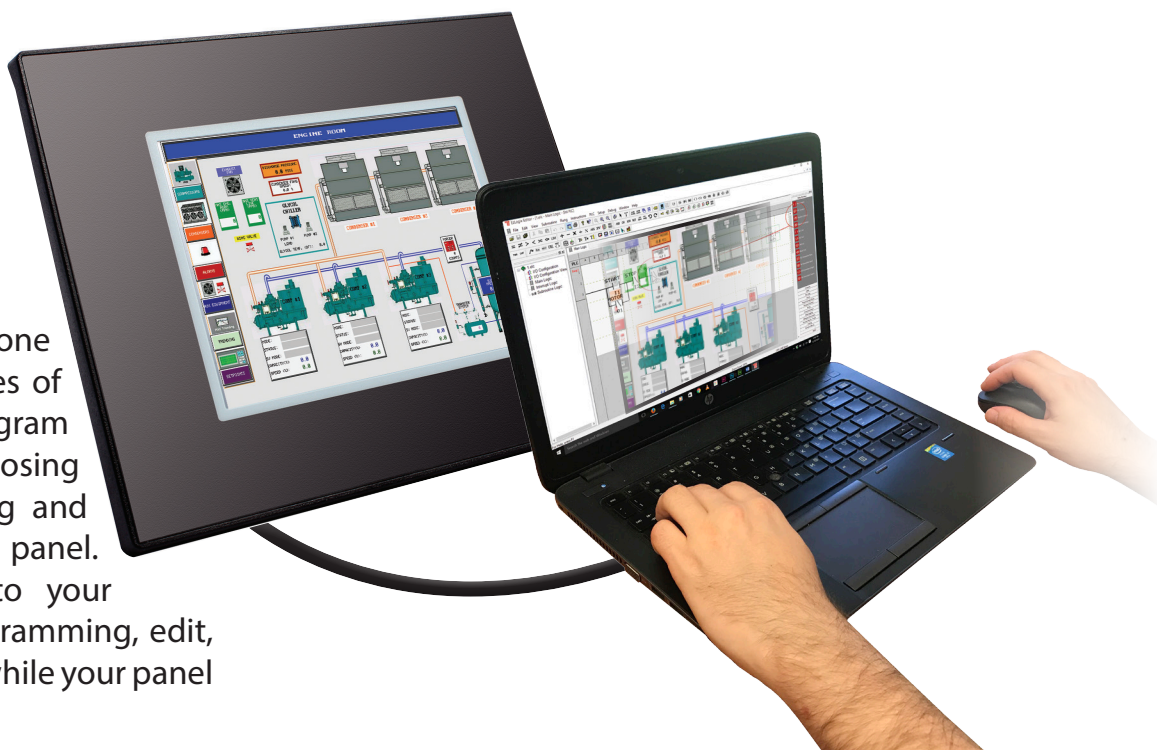
Project Screen Explorer

This side window displays the screens that you have created within your project. To open and edit a screen, simply double click the name of the screen. The book icons also let you know which screens are currently open.



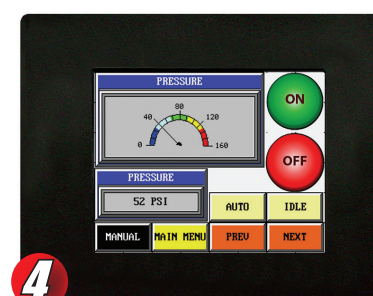
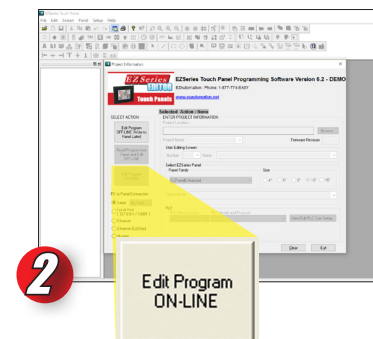
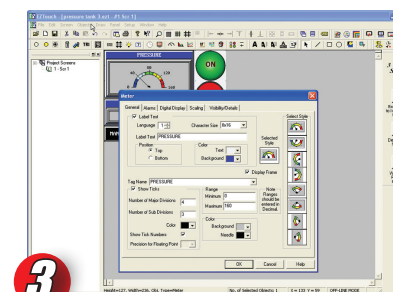
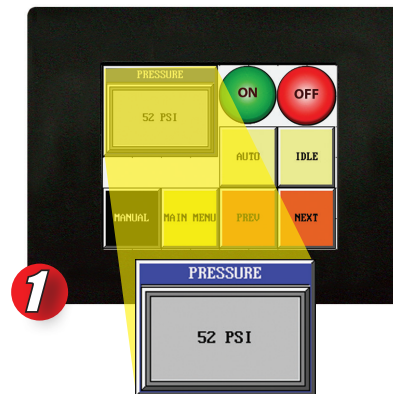
ONLINE PROGRAMMING, Patented

Online program editing is one of the most powerful features of EZTouch panel. It lets you program your panel 'Online' without losing any precious time uploading and downloading projects to a panel. Just connect your panel to your computer, select online programming, edit, and save your entire project while your panel is online with a PLC.



HERE IS A TRUE STORY...

- 1 After a machine upgrade, including a new PLC and Operator Interface, our System Integrator asked the Machine Operator what he would like to see better yet. The Operator said the new "computer" was great with all the colors but he missed the old pressure gauge.
- 2 Our System Integrator immediately pulled out his notebook computer, hooked it up to the Touch panel, launched his programming software and put it in On-Line mode.
- 3 And then, right in front of the operator's eyes, moved the other objects on the screen and put an Analog Meter exactly to the operator's color taste, without ever having to shut down the machine.
- 4 All this took less than 2 minutes.
**Operator: "Now that is nice!"
Let's get these on all the machines."**



EASY AS 1-2-3 PROGRAMMING SOFTWARE

EZTouch programming software is by far one of the easiest to use programs available in the market. You have seen a presentation of our powerful objects in the last few pages. Now let's take a look at how easy and simple it is to create an object.

The EZTouch programming software is just like any other windows application that comes with a main menu bar with pull-down menus, tear off toolbars with icons that have the hover-over description, a main window area where the screen is designed, etc. You can also build multiple screens at the same time and display them as tiled or cascaded in the main window, as shown in the examples to the right.

