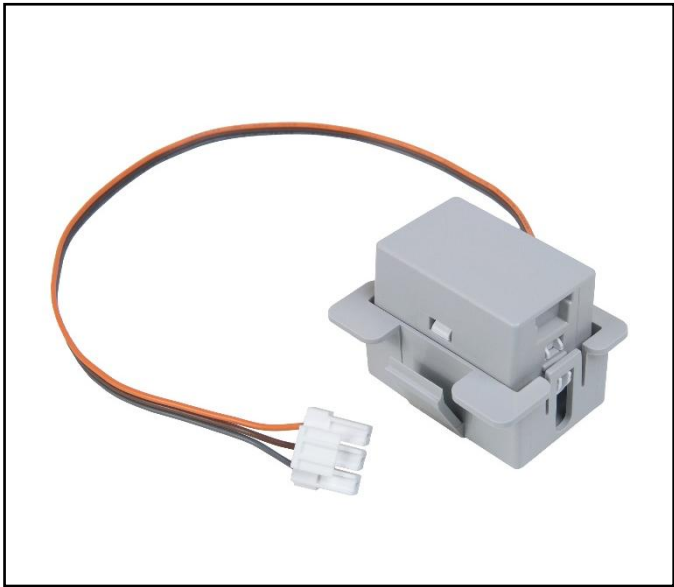


Indirect Contact Water Level Sensor



■ FEATURE

- Water level detection without Fluid contact
- No possibility of defects caused by fluid
- Applicable to various structures

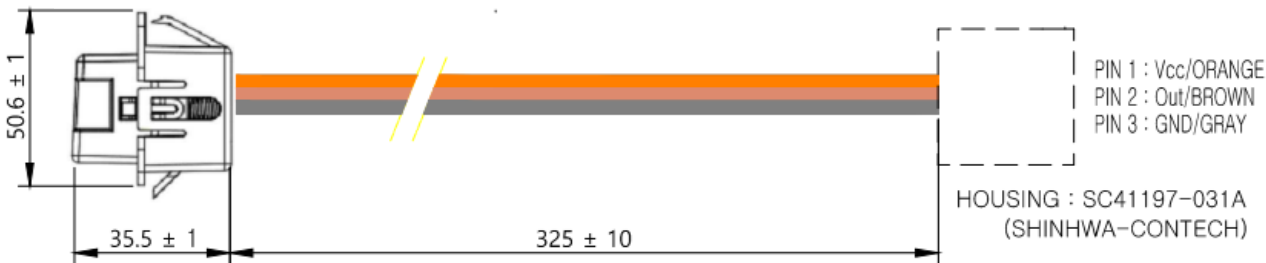
■ APPLICATIONS

- Refrigerator, Air-conditioner, Water purifier

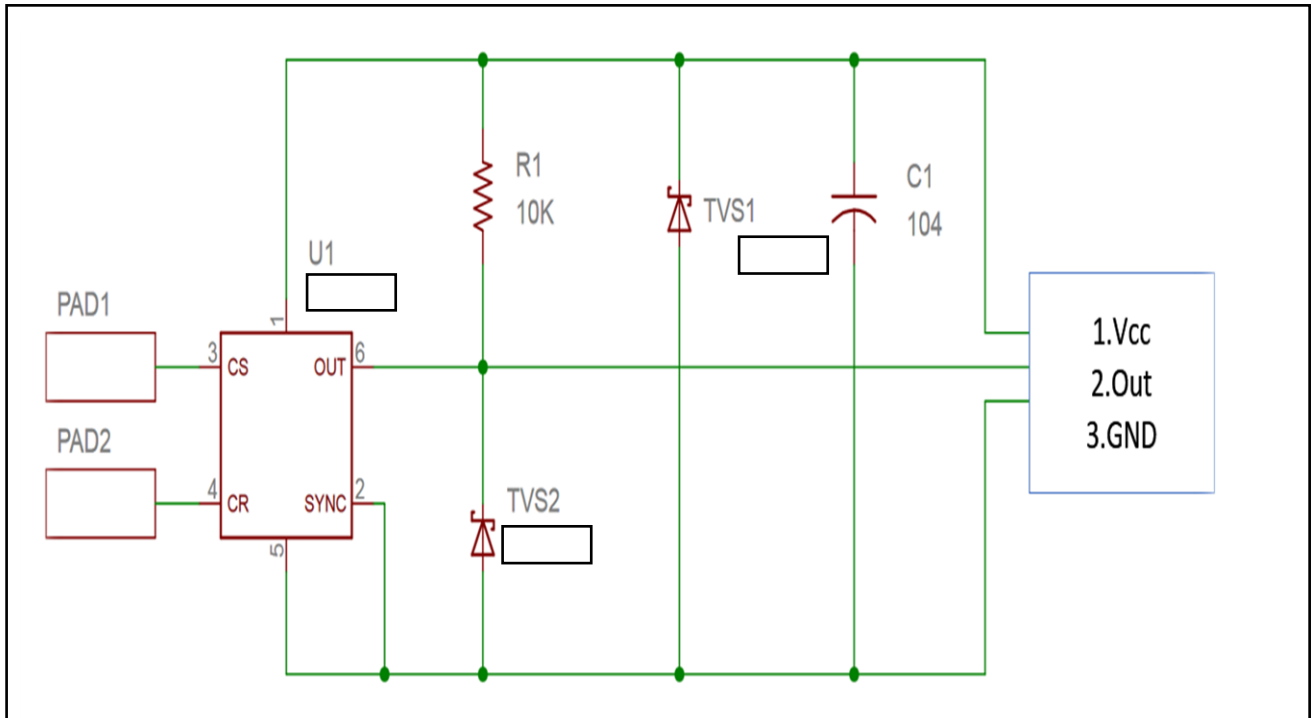
■ ELECTRICAL DATA

Characteristics	Sym	Min	Typ	Max	Units
Operating supply voltage	V _{CC}	2.5		5.5	V
Current Consumption	I _{DD}		285		μA
Output sink current	I _{out}			4.0	mA
Sensor Input capacitance range	C _s		10	100	pF
Reference Input capacitance range	C _R		12	100	pF
Minimun detectable capacitance variation	ΔC _S		0.2		pF

■ DIMENSION [unit:mm]

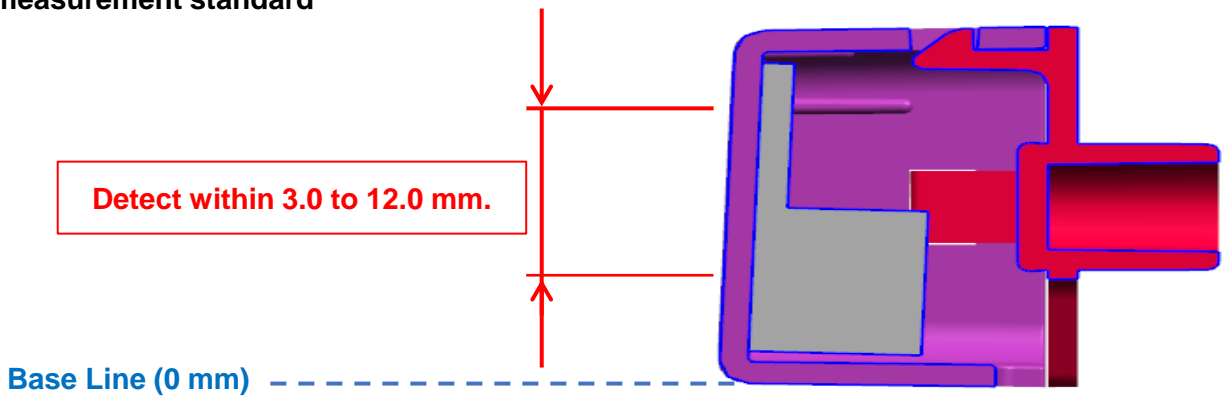


Functional Block Diagram



Product operation spec

Water level detection height measurement standard



DK SENSOR CO.,LTD.

Headquarters : 45, Gasan digital 1-ro, Geumcheon-gu
Seoul, KOREA

dksensor@dksksensor.com