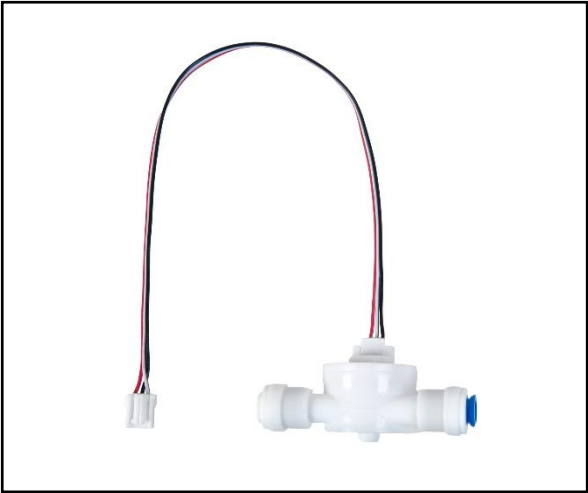


Flow Sensor



■ FEATURE

- Integrated model for constant flow rate
- Model classification according to the temperature and flow rate of the fluid

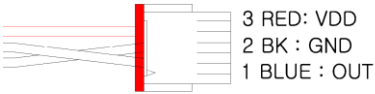
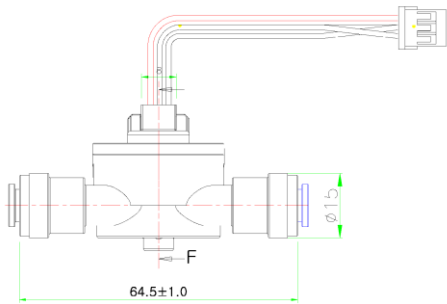
■ APPLICATIONS

Refrigerators, water dispensers, precision ice makers, etc.

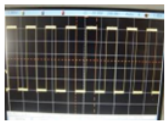
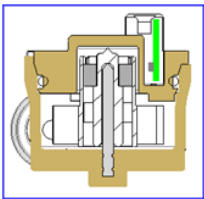
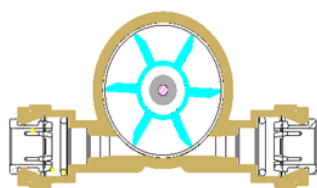
■ ELECTRICAL DATA

Specification		Remark
Operating Voltage	DC 5V	
Power Rating	DC 3.5 ~ 24V	Opening
Hall IC Opening	MAX 15mA	
Working Pressure	hydrostatic water pressure 0.5 ~ 8.5 kgf/cm <sup>2</sup>	
Ambient Temp.	5 ~ 85°C	
Operating temperature	5 ~ 95°C	
Used Fluids	Tap Water or Mineral Water	
Flow rate to Frequency	0.513cc/Hz ±3.5% (0.5LPM ~ 4.0LPM)	
Flow	0.513cc/Hz ±7.0% (0.4LPM ~ 4.9LPM)	
Usable Flow Range	0.4~4LPM	
Flow Detection Method	Hall IC SWITCH to using magnet	
Withstand Voltage	1200Vac/1sec	Trip current : 1mA
Noise Level	20dB(A) or less	At 150mm distance from motor side
	Be less than 20dB(A)	

■ DIMENSION

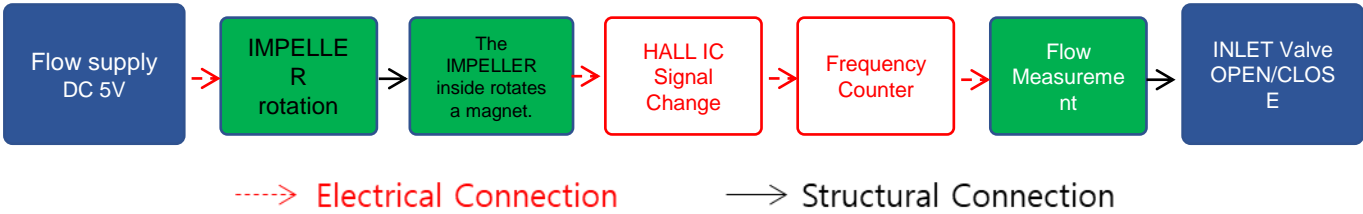


■ How it works

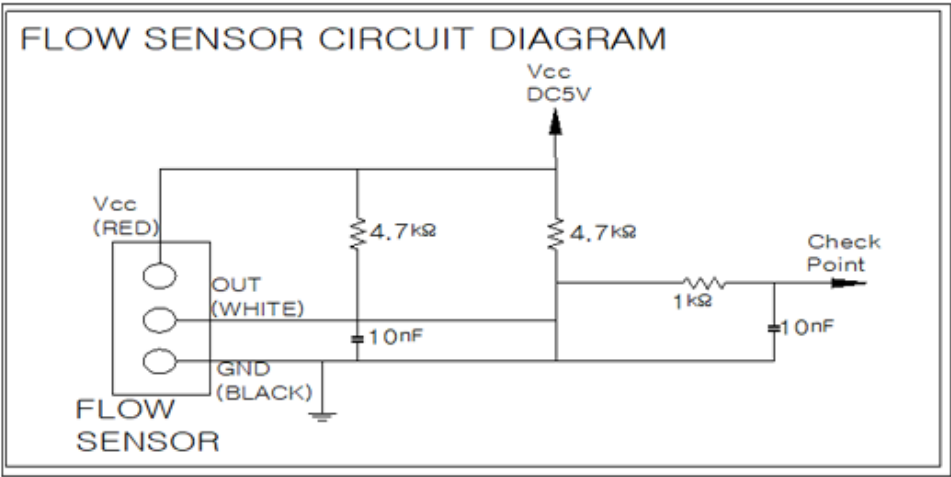


Pulse Out

■ Operating Mechanism



■ Circuit Diagram



**DK SENSOR CO.,LTD.**

Headquarters : 45, Gasan digital 1-ro, Geumcheon-gu  
Seoul, KOREA

dksensor@dksksensor.com