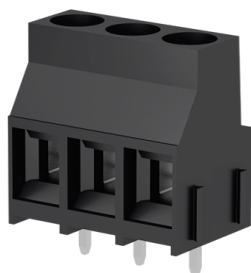


MSPH0200S-0N - Terminal block

<https://www.sauro.net/product/MSPH0200S-0N>



Number of poles: 2, Clamp tightening, 41A, 4mm², AWG, 450V, Pitch 6,35 mm, Modular, Connection Angle 0°, Number of levels: 1, Black (RAL 9005), Soldering technology Reflow STH, IEC

General data

Number of poles	2
Number of levels	1
Sides configuration	Modular
Pitch	6,35 mm
Voltage	450 V
Current	41 A
Housing composition	Monolithic
Wire section	6 mm ²
Connection angle	0°
Available approvals	IEC

Features

Screw dimension	M3.5
Recommended tightening torque	0.8 Nm
Operating temperature range	-40°C ÷ 105°C
Climatic category	-40/105/21 according to EN60068-1
Contact resistance	<15 mOhm
Insulation resistance	>1 GOhm

Certifications

[IEC \(n.EN60998\)](#)

<https://www.sauro.net/product/MSPH0200S-0N>

MSPH0200S-0N - Terminal block

<https://www.sauro.net/product/MSPH0200S-0N>

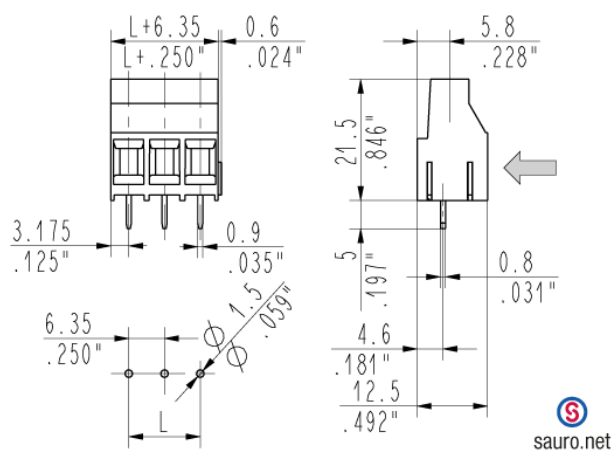
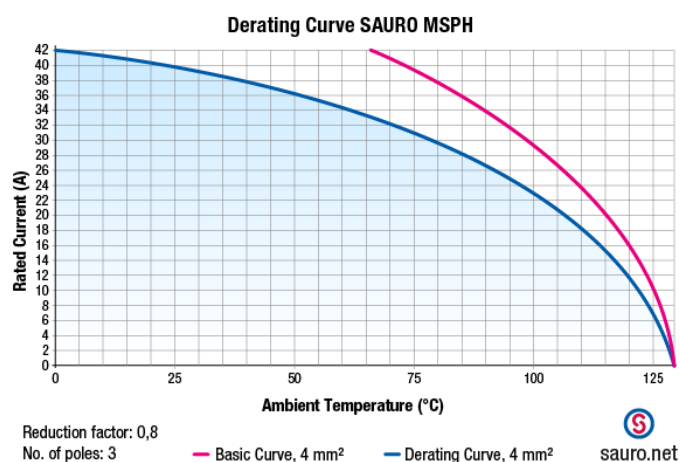
Rated voltage	450 V
Nominal current	41 A
Wire section	6 mm ²
Insulating category	I
Maximum temp usage	110

Materials

Screw material	Nickel-plated copper alloy
Terminal contact	Nickel and tin on copper alloy
Clamp tightening	Nickel-plated copper alloy
Insulating housing material	PA Polyamide
Insulating material group	I (CTI >= 600V)

Available colors

Black	similar to RAL 9005
Green	similar to RAL 6032
Light gray	similar to RAL 7035
Green	similar to RAL 6017
Orange	similar to RAL 2003
Blue	similar to RAL 5012



<https://www.sauro.net/product/MSPH0200S-0N>