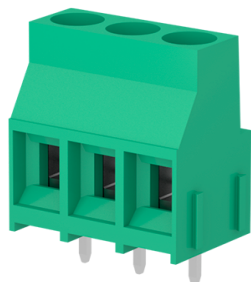


# MSP0300S - Terminal block

<https://www.sauro.net/product/MSP0300S>



Number of poles: 3, Clamp tightening, 41A, 4mm<sup>2</sup>, 10AWG, 450V, Pitch 6,35 mm, Modular, Connection Angle 0°, Number of levels: 1, Green (RAL 6032), Soldering technology Wave, UL, VDE, IMQ, CSA

## General data

Number of poles	3
Number of levels	1
Sides configuration	Modular
Pitch	6,35 mm
Voltage	450 V
Current	41 A
Housing composition	Monolithic
Wire section	6 mm <sup>2</sup>
Wire section	30 AWG ÷ 10 AWG
Connection angle	0°
Available approvals	UL, VDE, IMQ, CSA

## Features

Screw dimension	M3.5
Recommended tightening torque	0.8 Nm
Stripping length	8 mm
Operating temperature range	-40°C ÷ 105°C
Climatic category	-40/105/21 according to EN60068-1
Contact resistance	<15 mOhm
Insulation resistance	>1 GOhm

## Certifications

<https://www.sauro.net/product/MSP0300S>

# MSP0300S - Terminal block

<https://www.sauro.net/product/MSP0300S>

## IMQ (n.CA02.00899)

Rated voltage	450 V
Nominal current	41 A
Wire section	6 mm <sup>2</sup>
Insulating category	I
Maximum temp usage	110

## VDE (n.40021758 Reg.-Nr. C361)

Rated voltage	450 V
Nominal current	32 A
Wire section	4 mm <sup>2</sup>
Insulating category	I
Maximum temp usage	110

## CSA (n.LR 102896)

Rated voltage	300 V
Nominal current	30 A
Wire section	10 AWG
Tightening torque	7 lbf x in

## UL (n.E167473)

Usage group	B	C	D*
Rated voltage	300 V	150 V	300 V
Nominal current		30 A	
Wire section		10 AWG	
Tightening torque		7 lbf x in	

\* These limited ratings are applicable to a terminal block for use in or with industrial control equipment whereby the load on any single circuit of the terminal block does not exceed 15A at 51-150V, 10A at 151-300V, or 5A at 301-600V, or the maximum ampere rating, whichever is less.

## Materials

Screw material	Nickel-plated copper alloy
Terminal contact	Nickel and tin on copper alloy
Clamp tightening	Nickel-plated copper alloy
Insulating housing material	PA Polyamide
Insulating material group	I (CTI >= 600V)

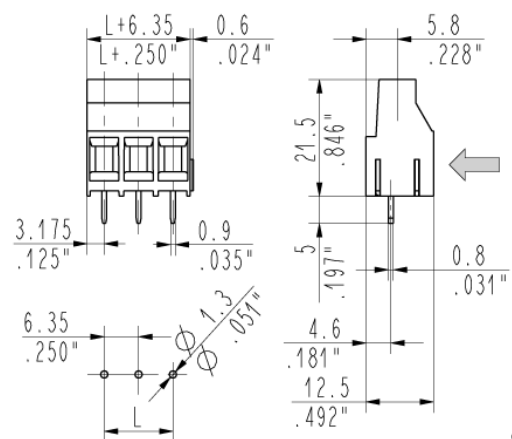
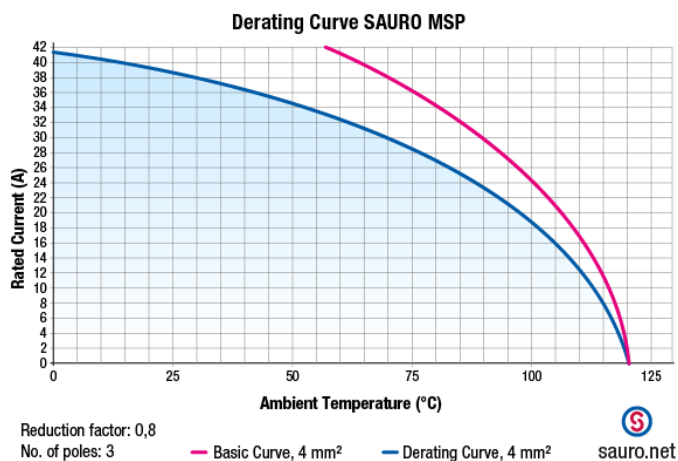
<https://www.sauro.net/product/MSP0300S>

# MSP0300S - Terminal block

<https://www.sauro.net/product/MSP0300S>

## Available colors

Green	similar to RAL 6032
Dark green	similar to RAL 6017
Black	similar to RAL 9005
Light gray	similar to RAL 7035
Dark gray	similar to RAL 7040
Orange	similar to RAL 2003
Blue	similar to RAL 5012
Brown	similar to RAL 8028
Yellow	similar to RAL 1018
White	similar to RAL 9001
Red	similar to RAL 3017
Another color	on demand



<https://www.sauro.net/product/MSP0300S>