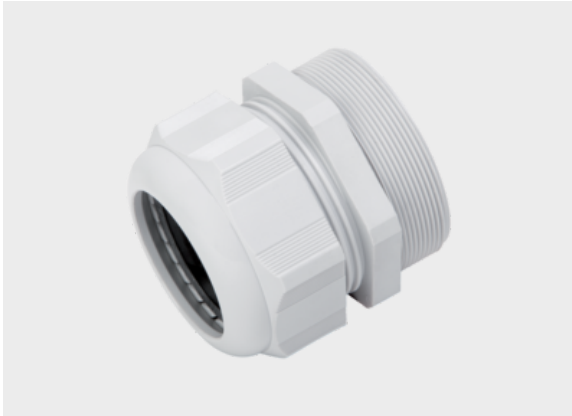




Type m-seal KV (plastic version)



Product information

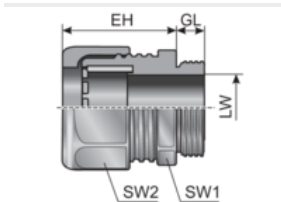
The m-seal cable fittings are manufactured of specially modified Polyamide and the seal is made of NBR.

m-seal cable fittings feature the following advantages:

- Large seal and clamping area
- With integrated strain relief
- High protection class IP 68
- Simple, fast assembly without special tools

*Suitable locknut must be ordered separately.

Information, conformities and approvals



Article	Order No.	Color	UV	Connecting thread	Clamping range (LW) mm	EH mm	GL mm	SW 1 / 2 mm	PU pcs.
m-seal KV M12x1,5 3,0-6,5 1)	84181250	Black	✓	M12x1,5	3 - 6.5	22	6	15	100
m-seal KV M16x1,5 4,0-8,0 1)	84181252	Black	✓	M16x1,5	4 - 8	25	8	19	50
m-seal KV M20x1,5 6,0-12,0 2)	84181254	Black	✓	M20x1,5	6 - 12	29	10	24	50
m-seal KV M25x1,5 11,0-17,0 2)	84181256	Black	✓	M25x1,5	11 - 17	33	8	29	50
m-seal KV M32x1,5 15,0-21,0 2)	84181258	Black	✓	M32x1,5	15 - 21	39	10	36	25
m-seal KV M40x1,5 19,0-28,0 2)	84181260	Black	✓	M40x1,5	19 - 28	44	10	46	20
m-seal KV M50x1,5 30,0-38,0 2)	84181262	Black	✓	M50x1,5	30 - 38	49	18	60	10
m-seal KV M63x1,5 34,0-44,0 2)	84181264	Black	✓	M63x1,5	34 - 44	49	18	65	10
m-seal KV M12x1,5 3,0-6,5 1)	84181200	Gray	✗	M12x1,5	3 - 6.5	22	6	15	100
m-seal KV M16x1,5 4,0-8,0 1)	84181202	Gray	✗	M16x1,5	4 - 8	25	8	19	50
m-seal KV M20x1,5 6,0-12,0 2)	84181204	Gray	✗	M20x1,5	6 - 12	29	10	24	50
m-seal KV M25x1,5 11,0-17,0 2)	84181206	Gray	✗	M25x1,5	11 - 17	33	8	29	50



Type m-seal KV (plastic version)

Article	Order No.	Color	UV	Connecting thread	Clamping range (LW) mm	EH mm	GL mm	SW 1 / 2 mm	PU pcs.
m-seal KV M32x1,5 15,0-21,0 2)	84181208	Gray	✗	M32x1,5	15 - 21	39	10	36	25
m-seal KV M40x1,5 19,0-28,0 2)	84181210	Gray	✗	M40x1,5	19 - 28	44	10	46	20
m-seal KV M40x1,5 22,0-32,0 3)	84181211	Gray	✗	M40x1,5	22 - 32	51.5	18	53	10
m-seal KV M50x1,5 30,0-38,0 2)	84181212	Gray	✗	M50x1,5	30 - 38	49	18	60	10
m-seal KV M63x1,5 34,0-44,0 2)	84181214	Gray	✗	M63x1,5	34 - 44	49	18	65	10
m-seal KV PG07 3,0-6,5 1)	84181050	Black	✓	PG 07	3 - 6.5	22	8	15	100
m-seal KV PG09 4,0-8,0 1)	84181052	Black	✓	PG 09	4 - 8	25	8	19	50
m-seal KV PG11 5,0-10,0 4)	84181054	Black	✓	PG 11	5 - 10	28	8	22	50
m-seal KV PG13.5 6,0-12,0 2)	84181056	Black	✓	PG 13,5	6 - 12	29	9	24	50
m-seal KV PG16 10,0-14,0 5)	84181058	Black	✓	PG 16	10 - 14	31	10	27	50
m-seal KV PG21 13,0-18,0 2)	84181060	Black	✓	PG 21	13 - 18	35	11	33	25
m-seal KV PG29 18,0-25,0 5)	84181062	Black	✓	PG 29	18 - 25	40	11	42	20
m-seal KV PG36 22,0-32,0 2)	84181064	Black	✓	PG 36	22 - 32	49	13	53	10
m-seal KV PG42 30,0-38,0 2)	84181066	Black	✓	PG 42	30 - 38	49	13	60	10
m-seal KV PG48 34,0-44,0 2)	84181068	Black	✓	PG 48	34 - 44	49	14	65	10
m-seal KV PG07 3,0-6,5 1)	84181000	Gray	✗	PG 07	3 - 6.5	22	8	15	100
m-seal KV PG09 4,0-8,0 1)	84181002	Gray	✗	PG 09	4 - 8	25	8	19	50
m-seal KV PG11 5,0-10,0 4)	84181004	Gray	✗	PG 11	5 - 10	28	8	22	50
m-seal KV PG13.5 6,0-12,0 2)	84181006	Gray	✗	PG 13,5	6 - 12	29	9	24	50
m-seal KV PG16 10,0-14,0 5)	84181008	Gray	✗	PG 16	10 - 14	31	10	27	50
m-seal KV PG21 13,0-18,0 2)	84181010	Gray	✗	PG 21	13 - 18	35	11	33	25
m-seal KV PG29 18,0-25,0 5)	84181012	Gray	✗	PG 29	18 - 25	40	11	42	20



Type m-seal KV (plastic version)

Article	Order No.	Color	UV	Connecting thread	Clamping range (LW) mm	EH mm	GL mm	SW 1 / 2 mm	PU pcs.
m-seal KV PG36 22,0-32,0 2)	84181014	Gray	✗	PG 36	22 - 32	49	13	53	10
m-seal KV PG42 30,0-38,0 2)	84181016	Gray	✗	PG 42	30 - 38	49	13	60	10
m-seal KV PG48 34,0-44,0 2)	84181018	Gray	✗	PG 48	34 - 44	49	14	65	10

1) With UR approval
2) With UL approval
3) No stock goods, delivery time and minimum order quantities upon request
4) With cURus- approval
5) With cULus- approval

Material properties



mod. polyamide PA 6 || Neoprene (CR) ||

Thermal properties



Temperature / temperature range -40 °C – 100 °C / short term: 150 °C

Protection class



Protection class IP68

Fire properties



Fire classification acc. to UL94: V2 self-extinguishing

Technical information



Halogen-free

Conformity



RoHS (EC Directive 2011/65/EU)

Approvals and operating permits



CSA approval



Type m-seal KV (plastic version)

Approvals and operating permits



cULus approval



cURus approval



UL Type 4x

Classification



ETIM 9: EC000441 || eClass 14: 27140801 || UNSPSC: 39131711 ||

General technical data



00