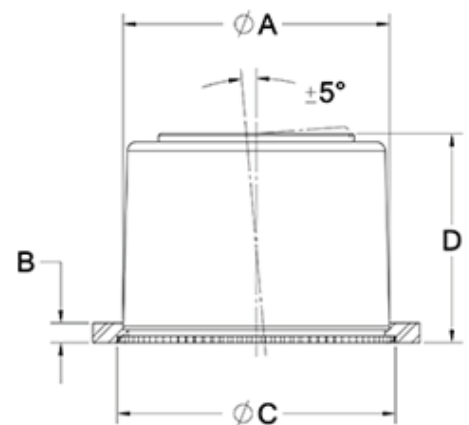
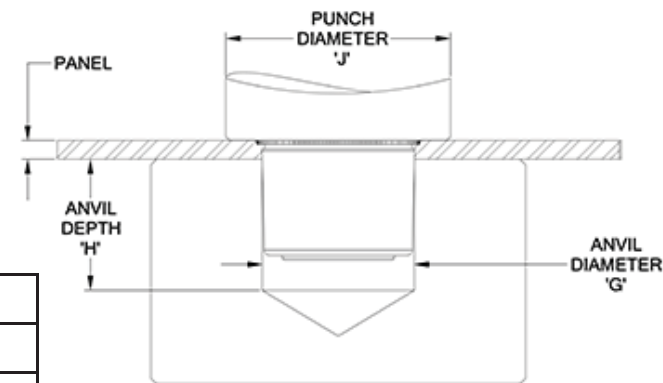




FSB-375

Description: 3/8" SAE 840 Bronze Bearing, Self Align, Self-Clinch

Bearing Type:	Plain
Alignment:	Self-Aligning
Mounting:	Self-Clinching
Nominal ID:	0.3750 in
ID Minimum:	0.3758 in
ID Maximum:	0.3765 in
Max Radial Load:	319 lbf
Max Speed:	12,200 rpm
Allowable Motions:	Linear Oscillating Rotating
Panel Hole (A) (+.003"/-.000")	0.6250 in
Min Mount Thickness (B)	0.0510 in
Min Dist CL to Edge	0.4500 in
Flange Dia (or Spline Dia) (C)	0.6700 in
Height (D)	0.4600 in
Install Force	6 Tons
Anvil Dia (G)	0.6400 in



Material Content / Structure	87.2%- 90.5% Copper / 9.5%- 10.5% Tin; 5% Mobil Medium Oil (45 Viscosity)
Shaft Requirements	MIN hardness of 95 Rockwell B, Recommended surface finish: 16 RMS (.4 Ra)
Operating Temperature	-20° to 200° Fahrenheit -29° to 93° Celsius
P - Pressure (Standard)	2000 PSI
P - Pressure (Metric)	13.79 N/mm ²
V- Velocity (Standard)	1200 FPM
V- Velocity (Metric)	6 m/s
PV Max (Standard)	25000 PSI x FPM
PV Max (Metric)	1.72 N/mm ² x m/s
Friction Coefficient	μ 0.04 to 0.35
Storage	Clean, dry storage in plastic bags or bins to prevent oil loss. NOTE: Bronze must not contact absorbent materials (paper, cardboard, etc.) which can wick away oil.
Maintenance	Maintenance free