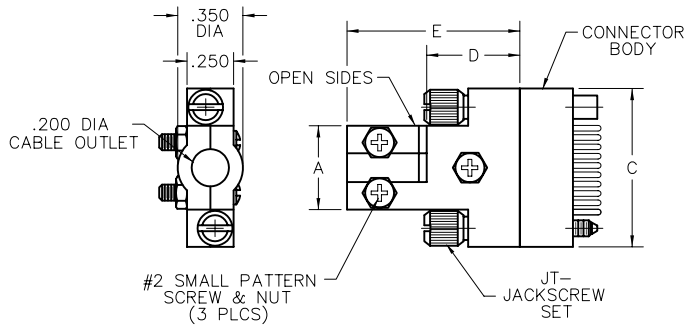


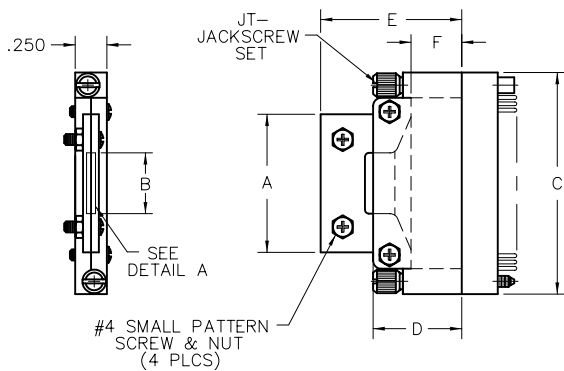
Accessories

Hoods for WTD-WTDX Series

WTD HOODS FOR USE WITH PLUG PATTERN

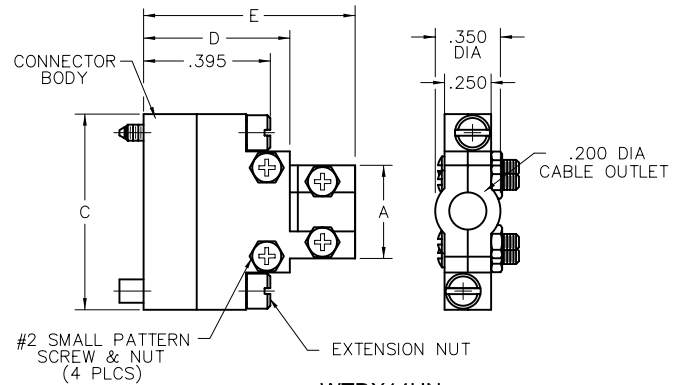


WTD10H

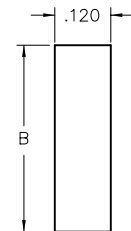


WTD26H

WTDX HOODS FOR USE WITH RECEPTACLE PATTERN



WTDX14HN



DETAIL A
MAXIMUM CABLE
OPENING
SEE NOTE 4

| PART NO. DESIGNATION | | | |
|----------------------|-------------|------------------|---|
| SERIES | SIZE | HOOD DESIGNATION | FOR HARDWARE TYPE |
| WTD | | H | JT - TURNING JACKSCREW SET |
| WTDX | 10, 14 & 26 | HN | J - FIXED JACKSCREW SET SY - GUIDE SET |

| CODE CHART | | | | | | | | | | | | | |
|-----------------------|-------|-----------------------|-------|------|------|------|------------------------------|-------|-----------------------|-------|------|------|------|
| WTD HOODS, PLUG IMAGE | | | | | | | WTDX HOODS, RECEPTACLE IMAGE | | | | | | |
| PART NO. | A | B $\pm .015$ -.025 | C | D | E | F | PART NO. | A | B $\pm .015$ -.025 | C | D | E | F |
| WTD10H | .450 | — | .850 | .500 | .850 | .200 | WTDX10H | .450 | — | .850 | .500 | .850 | — |
| WTD14H | .500 | — | 1.050 | | | | WTDX14H | .500 | — | 1.050 | | | — |
| WTD26H | 1.090 | .540 | 1.650 | | | | WTDX26H | 1.250 | .600 | 1.650 | | | .915 |

NOTES:

- DIMENSIONS ARE SYMMETRICAL ABOUT CENTER LINE.
- HOODS ARE SUPPLIED UNASSEMBLED.
- HOOD MATERIAL: POLYETHYLENE, HIGH DENSITY CLAMPING SCREWS AND NUTS: STAINLESS STEEL
- THE TOP CLAMPS ARE FLEXIBLE TO ACCOMMODATE MAXIMUM CABLE BUNDLE.
- CHECK WITH SALES DEPARTMENT FOR SIZES NOT LISTED.
- SEE PAGE WA-5 FOR WTA-WTAX SERIES HOODS.
- IF USED WITH WTA OR WTAX CONNECTORS IS DESIRED, LEAD DRESS AREA WILL BE AT A MINIMUM.
- SCREWS SUPPLIED ARE CROSS-RECESS ONLY.
- TOLERANCES: $\pm .015$
- SIZES 10 & 14 USE #2 SMALL PATTERN SCREW & NUT. SIZE 26 USE #4 SMALL PATTERN SCREW & NUT.
- HOODS CANNOT BE USED ON CONNECTORS SPECIFYING THE -C45 OPTION CODE.

EXAMPLES:

WTD**H = DESIGNATES HOOD USED WITH JT HARDWARE
 WTD**HN = DESIGNATES HOOD USED WITH J OR SY HARDWARE (INCLUDES EXTENSION NUTS).
 WTDHN = DESIGNATES EXTENSION NUTS ONLY.

** = DESIGNATES CONNECTOR SIZE. SEE PAGE WA-7 FOR ADDITIONAL INFORMATION ON EXTENSION NUTS.