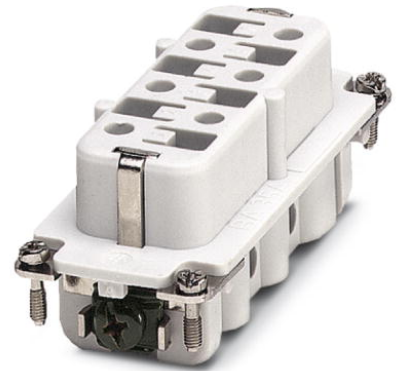



HC-HS 6-EBUS-12

Order No.: 1674561

The illustration shows version HC-HS 6-EBUS

<http://eshop.phoenixcontact.de/phoenix/treeViewClick.do?UID=1674561>HEAVYCON female insert, HS6 series, screw connection, numbering
from 7-12

Commercial data

GTIN (EAN)	 4 017918 144845
sales group	D006
Pack	10 pcs.
Customs tariff	85366990
Catalog page information	Page 445 (PC-2009)

Product notes

WEEE/RoHS-compliant since:
02/24/2006

<http://www.download.phoenixcontact.com>
Please note that the data given here has been taken from the online catalog. For comprehensive information and data, please refer to the user documentation. The General Terms and Conditions of Use apply to Internet downloads.

Technical data

General data

Note	For HEAVYCON-ADVANCE housings of B16 type and HEAVYCON housings of B32 type
Connection method	Screw connection
Tightening torque	1.2 Nm
Ambient temperature (operation)	-40 °C ... 125 °C (including heating up of contacts)

Pollution degree	3
Surge voltage category	III
Constructional and testing regulations	DIN VDE 0627/86
	DIN VDE 0110/02.79
	DIN VDE 0110-1/04.97
	IEC 60664-1, DIN IEC 60512
Number of positions	6
Insertion/withdrawal cycles	≥ 500
Design	HS6
Connection in acc. with standard	IEC / EN
Conductor cross-section	0.5 mm ² ... 6 mm ²
Connection cross-section AWG	20 ... 10
Stripping length of the individual wire	10 mm
Assembly instructions	Connectors may be operated only when there is no load/voltage.

Material data

Inflammability class acc. to UL 94	V0
Contact material	Copper alloy
Contact surface material	Ag
Contact carrier material	PA

Electrical characteristics

Rated voltage (III/3)	500 V
Rated surge voltage	6 kV
Rated current	35 A

Certificates / Approvals

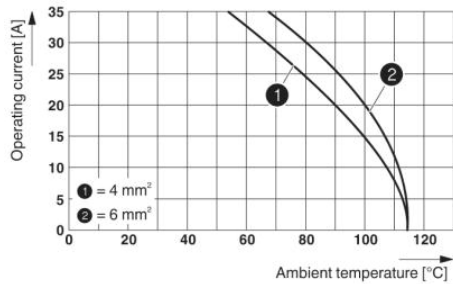


Certification

GOST

Diagrams/Drawings

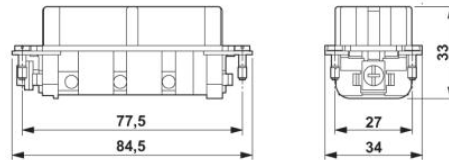
Diagram



Derating diagram: HC-HS...S series

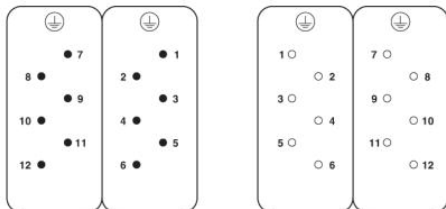
Dimensioned drawing

Panel cutout



Female insert

Schematic diagram



Address

PHOENIX CONTACT Deutschland GmbH
Flachmarktstr. 8
32825 Blomberg, Germany
Phone +49 5235 3 12000
Fax +49 5235 3 41200
<http://www.phoenixcontact.de>



© 2010 Phoenix Contact
Technical modifications reserved;