



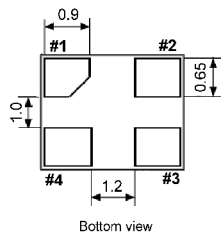
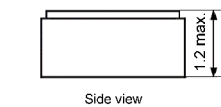
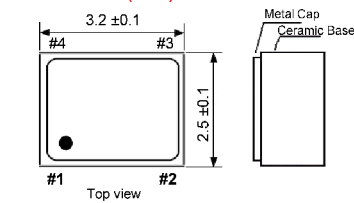
Clock Oscillator SMD-version

+3.3 V

| | |
|-------------------------------------|--|
| part no. | 12.95066 |
| model | KXO-V96T |
| frequency | 27.0 MHz |
| frequency stability at -40° ~ +85°C | ±50 ppm |
| operating temperature | -40° ~ +85°C |
| storage temperature | -50° ~ +125°C |
| symmetry | 40 % ~ 60 % at 50 % V _{DD} level |
| rise & fall time max. | 5 ns (10 % V _{DD} ~ 90 % V _{DD} level) |
| "0" level max. | VOL: 10 % V _{DD} |
| "1" level min. | VOH: 90 % V _{DD} |
| input voltage V _{DD} | +3.3 V ±5 % |
| stand-by control voltage (pin#1) | V _{IH} (min): 70 % V _{DD} V _{IL} (max): 30 % V _{DD} * |
| supply voltage | -0.5 V ~ +7.0 V |
| input current | 6.0 mA typ., 11.0 mA max. (pin #1 = Open or V _{IH}) |
| output load max. | 15 pF (HCMOS) |
| start up time max. | 10 ms |
| disable delay time max. | 150 ns |
| enable delay time max. | 10 ms |
| stand by current max.* | 50 µA (Pin #1 = V _{IL}) |
| jitter max. | deterministic jitter 5 ps norm 1-sigma 7 ps random jitter 7 ps peak to peak 40 ps |
| contents of reel | 1000 pcs. |

* Internal crystal oscillation to be halted (pin#1=V_{IL})

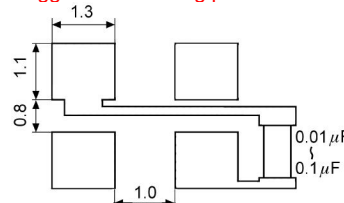
Dimensions (mm):



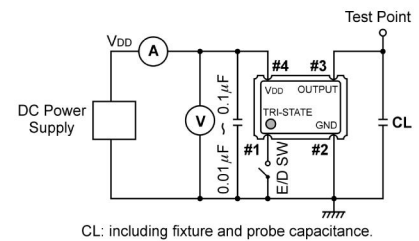
| PIN | Connection |
|-----|----------------------|
| 1 | "L" (0V) "H" or OPEN |
| 2 | GND |
| 3 | Z OUTPUT |
| 4 | V _{DD} |

Z: high impedance

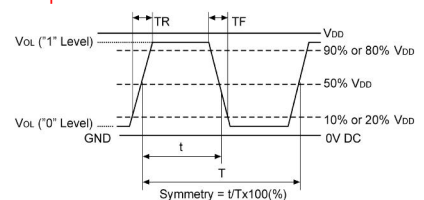
Suggested soldering pad:



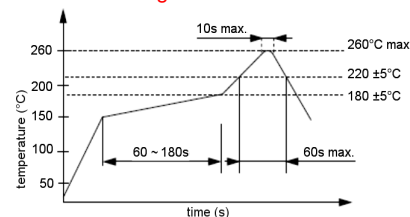
Test circuit:



Output Waveform:



Reflow soldering condition:



Tape specification:

