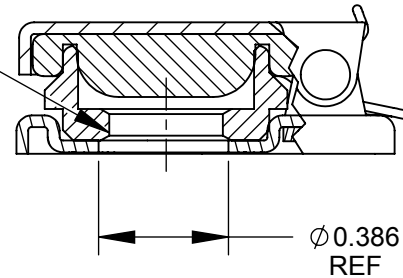


NOTES:

- MATERIALS:**
 COVER & BASE - STEEL
 FINISH - POLYESTER POWDER COAT, SEMI-GLOSS BLACK
 GASKET - SYNTHETIC RUBBER
 TORSION SPRING - STAINLESS STEEL
 AXLE - COPPER ALLOY, NICKEL PLATED
 NUT - COPPER ALLOY, NICKEL PLATED

3/8-32 UNEF-2B
THREAD



- HEX NUT SHIPPED UNASSEMBLED
- THIS PRODUCT IS RoHS COMPLIANT.

CUSTOMER DRAWING

					THIS DRAWING DESCRIBES A DESIGN CONSIDERED PROPRIETARY IN NATURE, DEVELOPED AND MANUFACTURED BY SWITCHCRAFT INC. AND IS RELEASED ON A CONFIDENTIAL BASIS FOR IDENTIFICATION PURPOSES ONLY.					
					SIZE	WIDTH	MULT	LBS/M	TEMPER	
					UNLESS OTHERWISE SPECIFIED			FINISH		
					1. ALL DIMENSIONS IN INCHES			MATERIAL		
					- TWO PLACE DECIMALS ±0.02			SPEC No.		
					- THREE PLACE DECIMALS ±0.005			FIRST USED ON		
C	28160	4/12/19	TJK	TJK	SCALE 1.75:1					
B	26771	05/13/11	JEB	TJK	DATE DRAWN	BY	CHKD			APVD
A	25429	9-19-07	RF	TJK	9-19-06	RF	RF			TJK
REV	ECO NUMBER	DATE	BY	APVD	NAME			PART No.		
REVISIONS					DO NOT SCALE DRAWING			JAX COVER, RoHS		SHEET 1 OF 1
								515X		REV C

