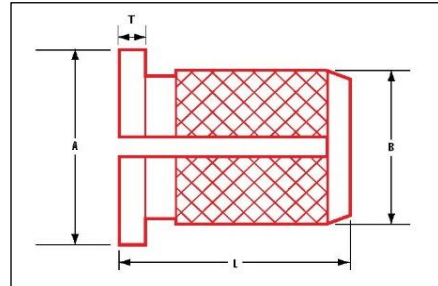




240 E. Rosecrans Avenue | Gardena, CA 90248 | (800) 234-5613 | www.ezlok.com

## Press Insert for Plastic



### SPECS:

Part No: 260-006-RS

Style: Reverse-Slot

Installation Method: Press-In

Material: Brass

For Use In: Thermoplastic, Thermoset Plastic

Internal Thread: 6-32

Overall Length/in (L): 0.250

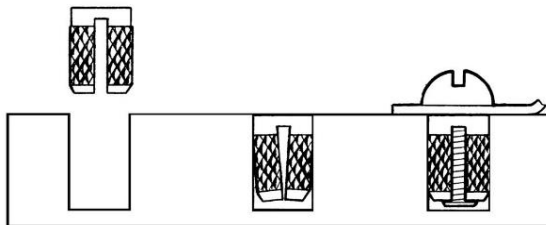
Diameter/in (A): 0.249

Diameter/in (B): 0.199

Thickness/in (T): 0.026

\*Rec. Hole Size/in: 0.188

### INSTALLATION



*To install, simply press the insert into the hole. The insert compresses as it is installed. As the fastener is threaded into place, the insert expands and the diamond knurling secures it in place.*

\* Hole size requirements may vary depending on a number of factors, including material and tools.  
We recommend that you test your application prior to production.