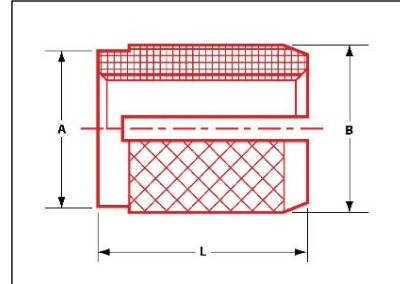




240 E. Rosecrans Avenue | Gardena, CA 90248 | (800) 234-5613 | www.ezlok.com

Press Insert for Plastic



SPECS:

Part No: 240-M10-AL

Style: Flush

Installation Method: Press-In

Material: Aluminum

For Use In: Thermoplastic, Thermoset Plastic

Internal Thread: M10-1.5

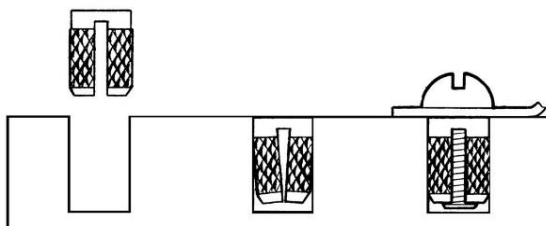
Overall Length/in (L): 0.625

Diameter/in (A): 0.437

Diameter/in (B): 0.451

*Rec. Hole Size/in: 0.438

INSTALLATION



To install, simply press the insert into the hole. The insert compresses as it is installed. As the fastener is threaded into place, the insert expands and the diamond knurling secures it in place.

* Hole size requirements may vary depending on a number of factors, including material and tools.
We recommend that you test your application prior to production.