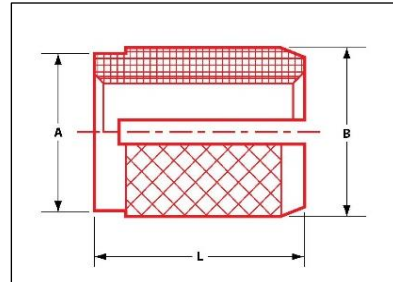




240 E. Rosecrans Avenue | Gardena, CA 90248 | (800) 234-5613 | www.ezlok.com

## Press Insert for Plastic



### SPECS:

Part No: 240-5-CR

Style: Flush

Installation Method: Press-In

Material: Stainless Steel

For Use In: Thermoplastic, Thermoset Plastic

Internal Thread: 5/16-18

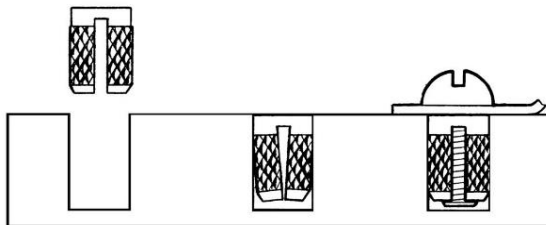
Overall Length/in (L): 0.563

Diameter/in (A): 0.375

Diameter/in (B): 0.389

\*Rec. Hole Size/in: 0.375

### INSTALLATION



*To install, simply press the insert into the hole. The insert compresses as it is installed. As the fastener is threaded into place, the insert expands and the diamond knurling secures it in place.*

\* Hole size requirements may vary depending on a number of factors, including material and tools.  
We recommend that you test your application prior to production.