

L7806 Three-terminal positive voltage regulator

FEATURES

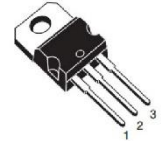
- Maximum Output Current I_{OM} : 1.5A
- Output Voltage V_O : 6V
- Continuous total dissipation
 P_D : 1.5W($T_A=25^\circ\text{C}$)

TO-220

1.IN

2.GND

3.OUT



ABSOLUTE MAXIMUM RATINGS (Operating temperature range applies unless otherwise specified)

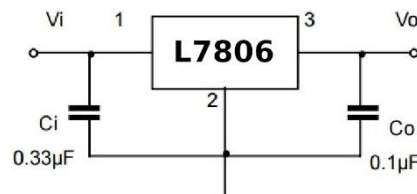
Parameter	Symbol	Value	UNIT
Input Voltage	V_i	35	V
Thermal Resistance from Junction to Ambient	$R_{\theta JA}$	66.7	$^\circ\text{C}/\text{W}$
Operating Junction Temperature Range	T_{OPR}	-25 ~ +125	$^\circ\text{C}$
Storage Temperature Range	T_{STG}	-65 ~ +150	$^\circ\text{C}$

ELECTRICAL CHARACTERISTICS AT SPECIFIED VIRTUAL JUNCTION TEMPERATURE

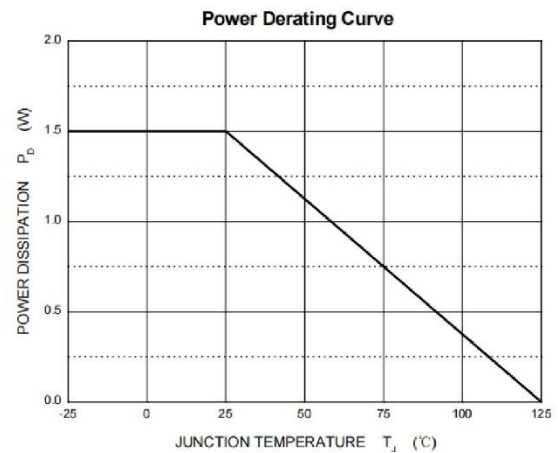
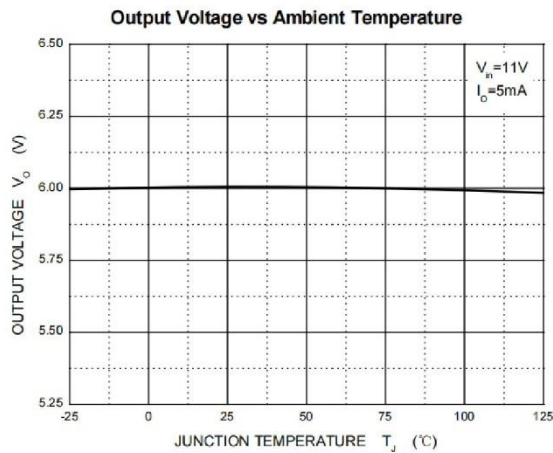
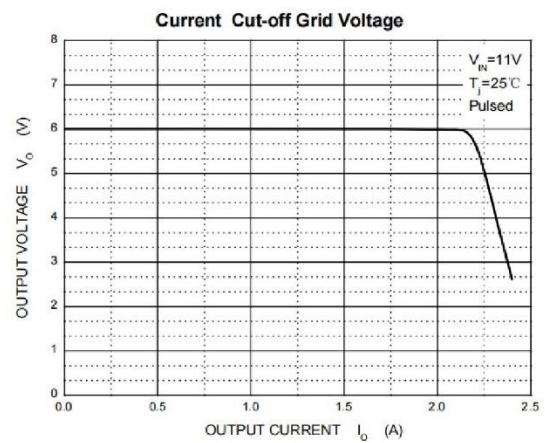
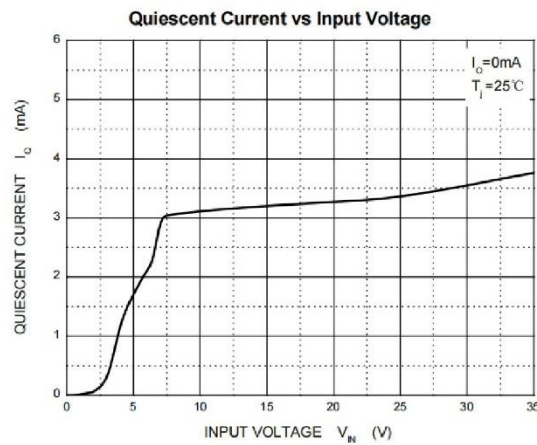
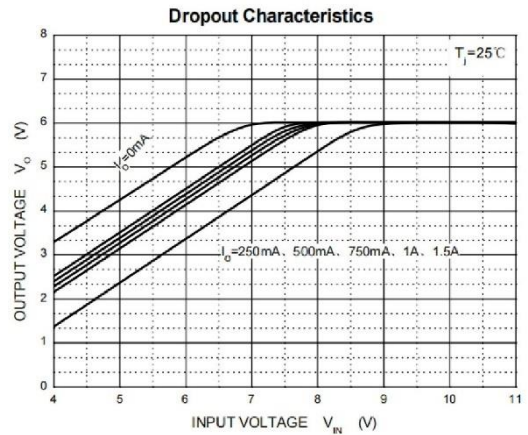
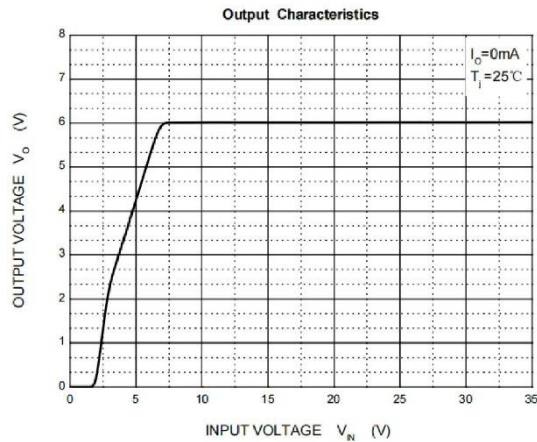
($V_i=11\text{V}$, $I_o=500\text{mA}$, $C_i=0.33\mu\text{F}$, $C_o=0.1\mu\text{F}$, unless otherwise specified)

Parameter	Symbol	Test conditions	MIN	TYP	MAX	UNIT
Output Voltage	V_O	25 $^\circ\text{C}$	5.75	6	6.25	V
		8V $\leq V_i \leq 21\text{V}$, $I_o=5\text{mA}-1\text{A}$	-25~125 $^\circ\text{C}$	5.7	6	
Load Regulation	ΔV_O	$I_o=5\text{mA}-1.5\text{A}$	25 $^\circ\text{C}$	14	120	mV
		$I_o=250\text{mA}-750\text{mA}$	25 $^\circ\text{C}$	4	60	
Line Regulation	ΔV_O	8V $\leq V_i \leq 25\text{V}$	25 $^\circ\text{C}$	5	120	mV
		9V $\leq V_i \leq 13\text{V}$	25 $^\circ\text{C}$	1.5	60	
Quiescent Current	I_Q	25 $^\circ\text{C}$		4.3	8	mA
Quiescent Current Change	ΔI_Q	8V $\leq V_i \leq 25\text{V}$	-25~125 $^\circ\text{C}$		1.3	mA
		5mA $\leq I_o \leq 1\text{A}$	-25~125 $^\circ\text{C}$		0.5	
Output Noise Voltage	V_N	10Hz $\leq F \leq 100\text{KHz}$	25 $^\circ\text{C}$	45		mV/ V_O
Output Voltage Drift	$\Delta V_O/\Delta T$	$I_o=5\text{mA}$	0~125 $^\circ\text{C}$	-0.8		mV/ $^\circ\text{C}$
Ripple Rejection	RR	9V $\leq V_i \leq 19\text{V}$, F=120Hz	-25~125 $^\circ\text{C}$	59	75	dB
Dropout Voltage	V_D	$I_o=1\text{A}$	25 $^\circ\text{C}$	2		V
Output Resistance	R_O	F=1KHz	25 $^\circ\text{C}$	10		m Ω
Short Circuit Current	I_{SC}		25 $^\circ\text{C}$	550		mA
Peak Current	I_{PK}		25 $^\circ\text{C}$	2.2		A

TYPICAL APPLICATION

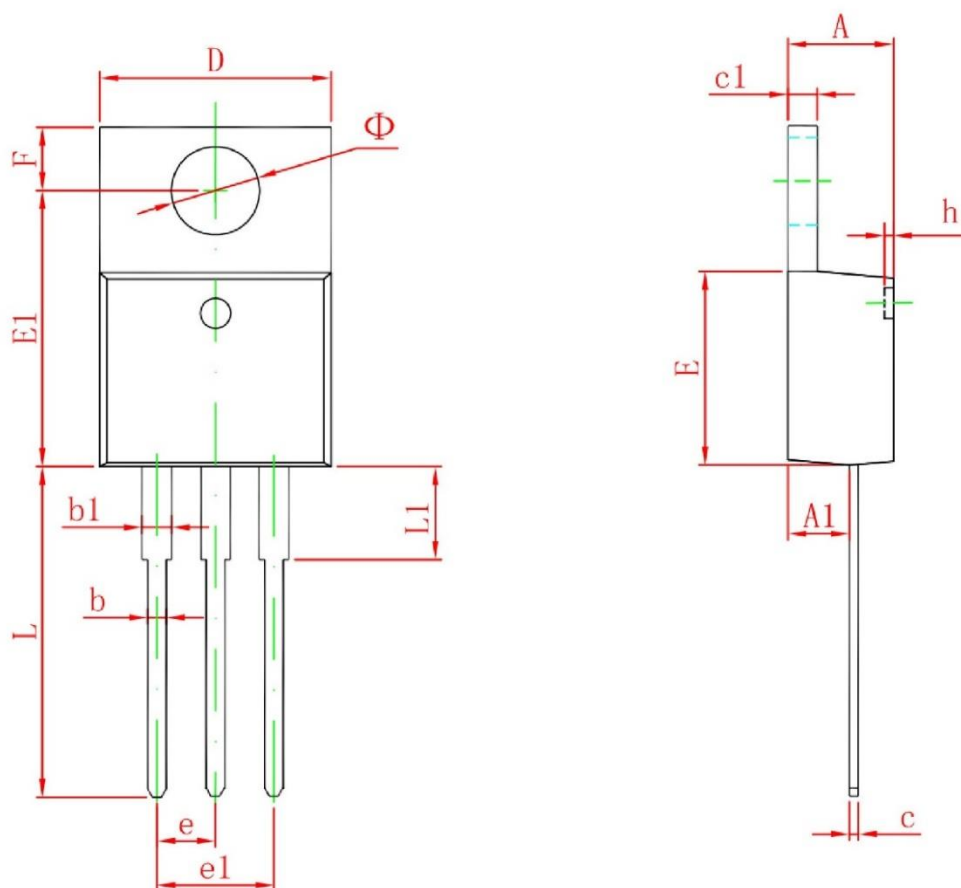


Typical Characteristics



All products, product specifications and data are subject to change without notice to improve reliability, function or design or otherwise.

TO-220-3L Package Outline Dimensions



Symbol	Dimensions In Millimeters		Dimensions In Inches	
	Min	Max	Min	Max
A	4.470	4.670	0.176	0.184
A1	2.520	2.820	0.099	0.111
b	0.710	0.910	0.028	0.036
b1	1.170	1.370	0.046	0.054
c	0.310	0.530	0.012	0.021
c1	1.170	1.370	0.046	0.054
D	10.010	10.310	0.394	0.406
E	8.500	8.900	0.335	0.350
E1	12.060	12.460	0.475	0.491
e	2.540 TYP		0.100 TYP	
e1	4.980	5.180	0.196	0.204
F	2.590	2.890	0.102	0.114
h	0.000	0.300	0.000	0.012
L	13.400	13.800	0.528	0.543
L1	3.560	3.960	0.140	0.156
Φ	3.735	3.935	0.147	0.155

All products, product specifications and data are subject to change without notice to improve reliability, function or design or otherwise.