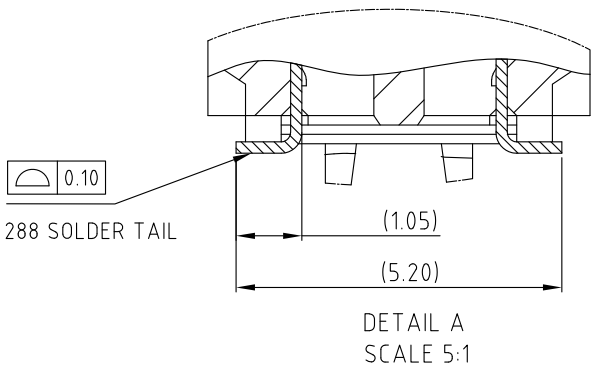
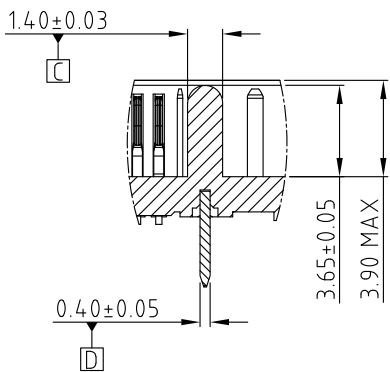
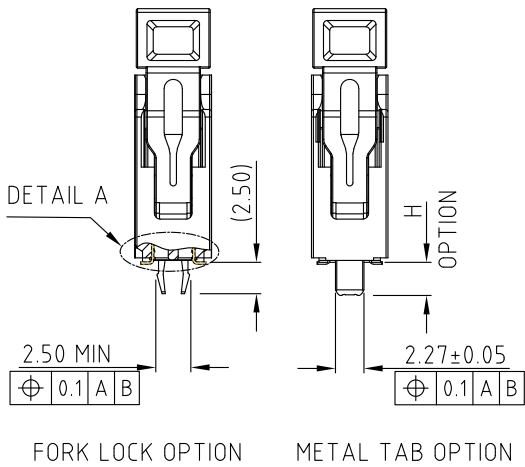
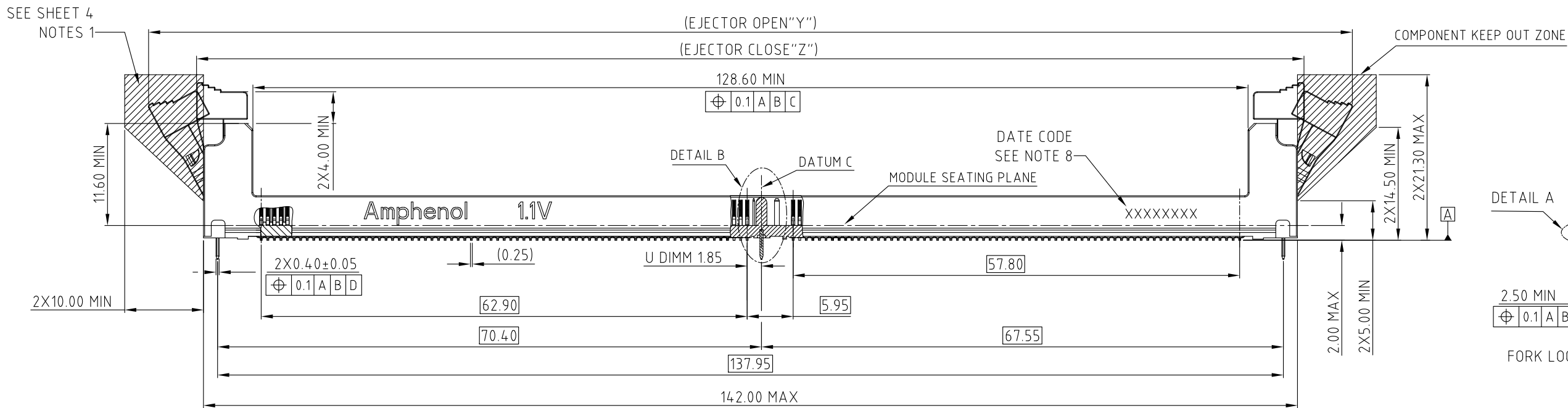
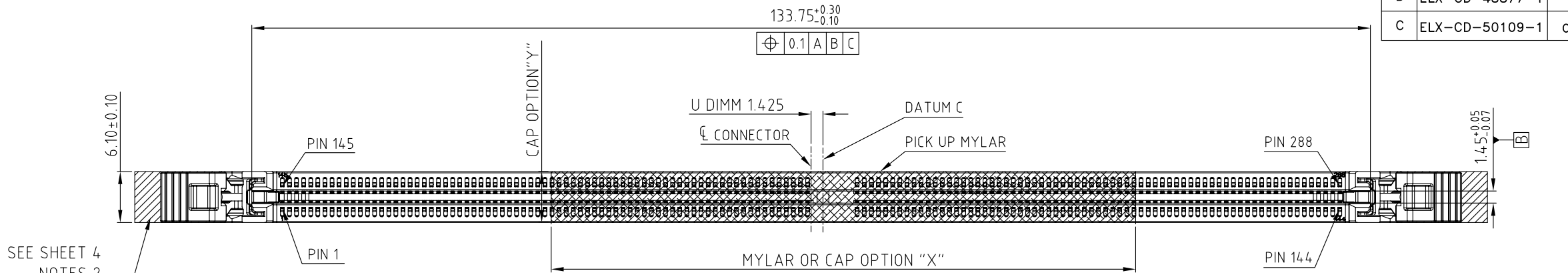


This document is the property of Amphenol Corporation and is delivered on the express condition that it is not to be disclosed, reproduced or used, in whole or in part, for manufacture or sale by anyone other than Amphenol Corporation without its prior consent, & that no right is granted to disclose or to use any information in this document.

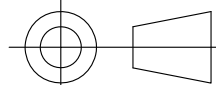
CUSTOMER DRAWING

REVISIONS				
SYM	ECN	DESCRIPTION	DATE	APPROVED
A	ELX-CD-F3076-1	FIRST RELEASED	Sep.01,2022	YH
B	ELX-CD-48877-1	ADD DATE CODE DESCRIBE	Jul.27,2023	YH
C	ELX-CD-50109-1	CHANGE 40MM LENGTH MYLAR TO 50MM	Mar.05,2024	YH

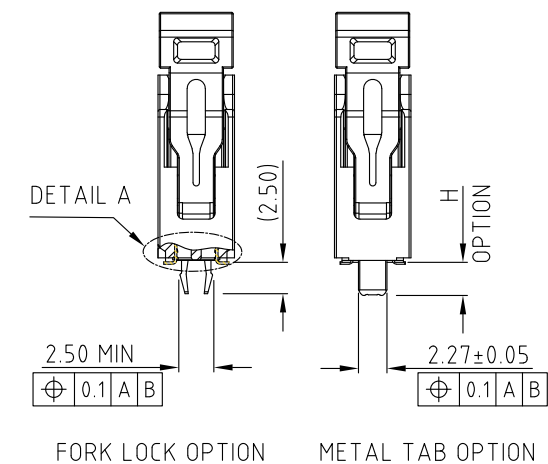
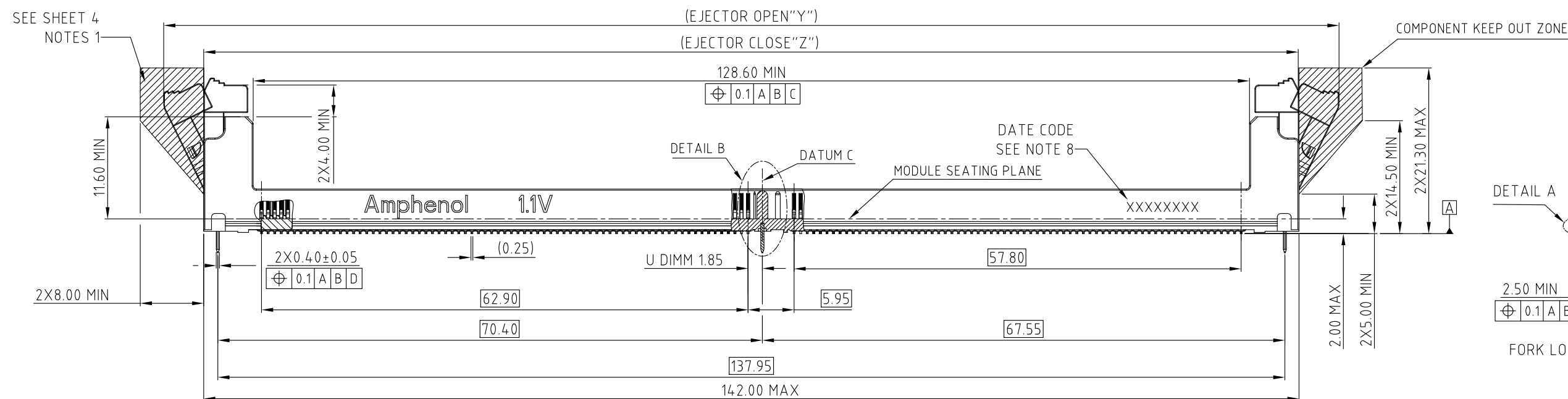
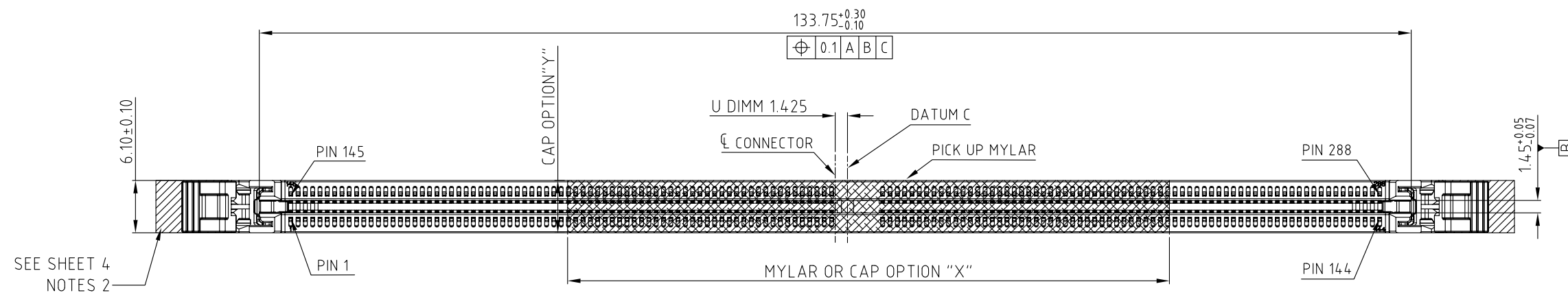



ITEM	EJECTOR OPEN DIMENSION "Y"	EJECTOR CLOSE DIMENSION "Z"	EJECTOR FIGURE
STANDARD LATCH	156.00 MAX	144.00 MAX	

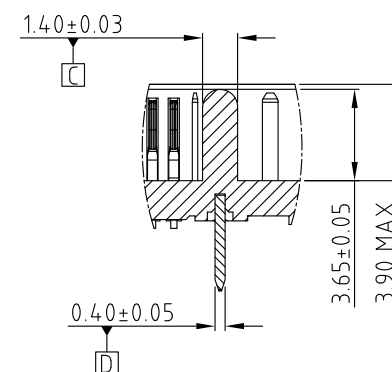
DETAIL B  
SCALE 2:1

UNLESS OTHERWISE SPECIFIED TOLERANCES		APPROVAL		DATE	Amphenol		
U.S.	METRIC	DRAWN	Kellen.Yang	Mar.05,2024			
.X +/-	0.35	CHECKED			TITLE  DDR5 288P U DIMM CONNECTOR		
.XX +/-	0.25	CHECKED					
.XXX +/-	0.15	DRAWING FILE : DRAWING\DDR\CDDR503XXXXXXD			SIZE A3		
FRACTIONS +/-							
ANGLES +/-	3°	ANGLE OF PROJECTION			DRAWING NO. C DDR503XXXXXXD		
FOR MATERIALS AND FINISHES SEE NOTES							
REMOVE SHARP EDGES					REV. C		
DIMENSIONS							
U.S.	INCHES	SCALE NONE			SHEET 1 OF 6		
(METRIC)	(MM)						

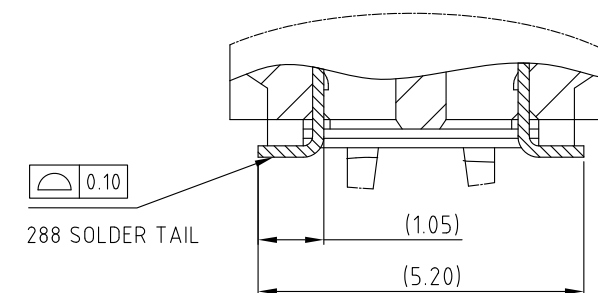
REVISIONS				
SYM	ECN	DESCRIPTION	DATE	APPROVED
		SEE SHEET1		



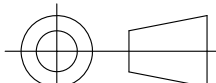
ITEM	EJECTOR OPEN DIMENSION"Y"	EJECTOR CLOSE DIMENSION"Z"	EJECTOR FIGURE
SHORT LATCH	152.00 MAX	142.00 MAX	



DETAIL B  
SCALE 2:1



DETAIL A  
SCALE 5:1

UNLESS OTHERWISE SPECIFIED TOLERANCES  U.S. METRIC  .X +/— 0.35 .XX +/— 0.25 .XXX +/— 0.15  FRACTIONS +/— ANGLES +/— 3°		APPROVAL		DATE		Amphenol					
		DRAWN	Kellen.Yang	Mar.05,2024							
		CHECKED									
		CHECKED									
FOR MATERIALS AND FINISHES SEE NOTES		DRAWING FILE : DRAWING\DDR\CDDR503XXXXXXXXXD				TITLE  DDR5 288P U DIMM CONNECTOR					
REMOVE SHARP EDGES		ANGLE OF PROJECTION 				SIZE		DRAWING NO.		REV.	
DIMENSIONS						A3		C DDR503XXXXXXXXD		C	
— U.S. —  (METRIC)						— INCHES —  (MM)		SCALE		NONE	

This document is the property of Amphenol Corporation and is delivered on the express condition that it is not to be disclosed, reproduced or used, in whole or in part, for manufacture or sale by anyone other than Amphenol Corporation without its prior consent, & that no right is granted to disclose or to use any information in this document.

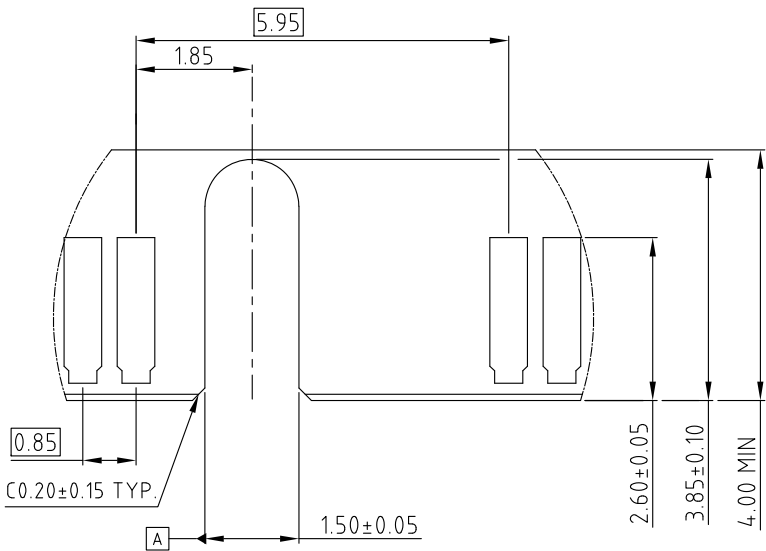
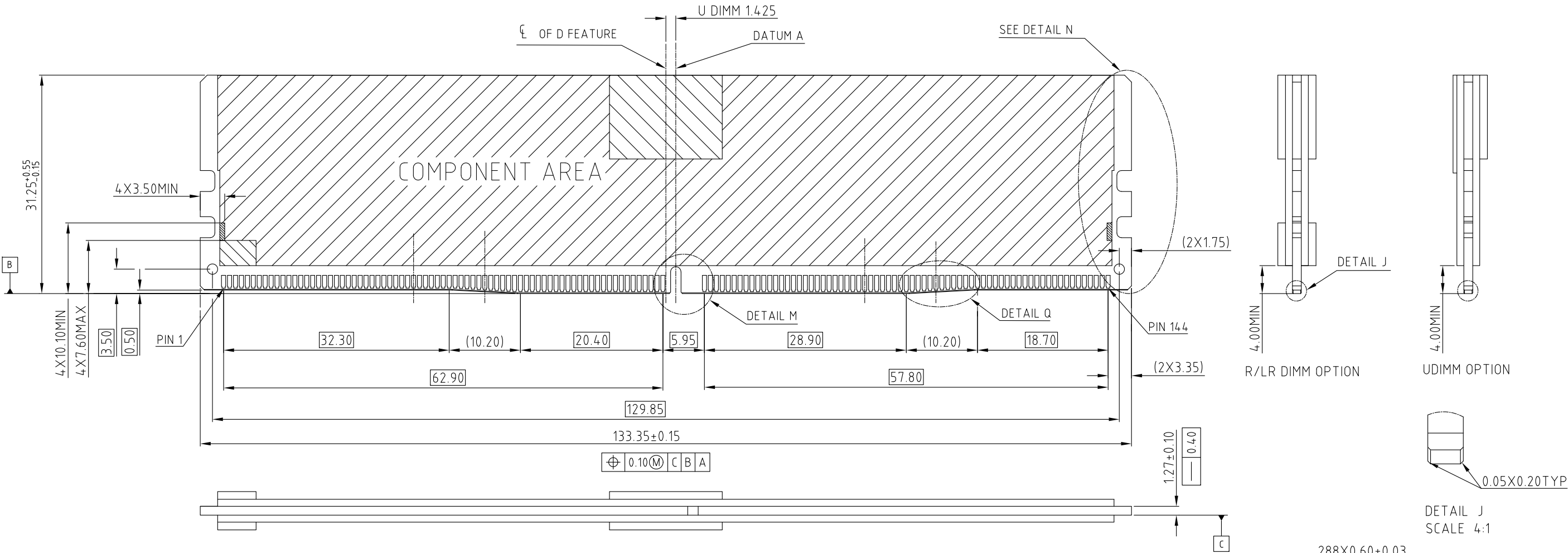
CUSTOMER DRAWING



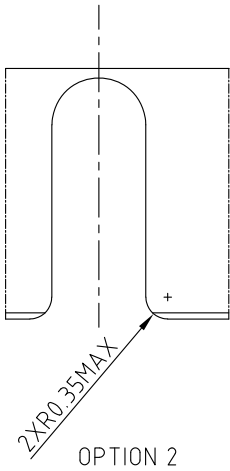
REVISIONS

SYM	ECN	DESCRIPTION	DATE	APPROVED
		SEE SHEET1		

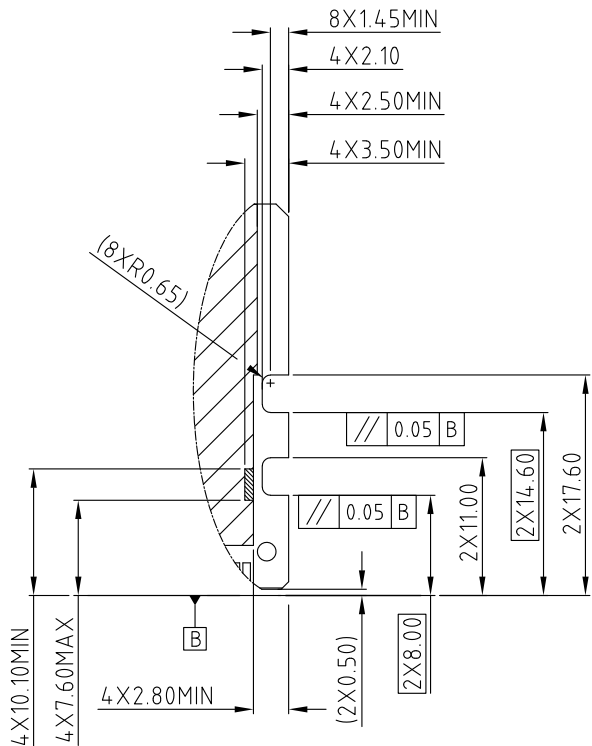
DDR5 MODULE  
MORE INFORMATION REFER TO JEDEC MO-329



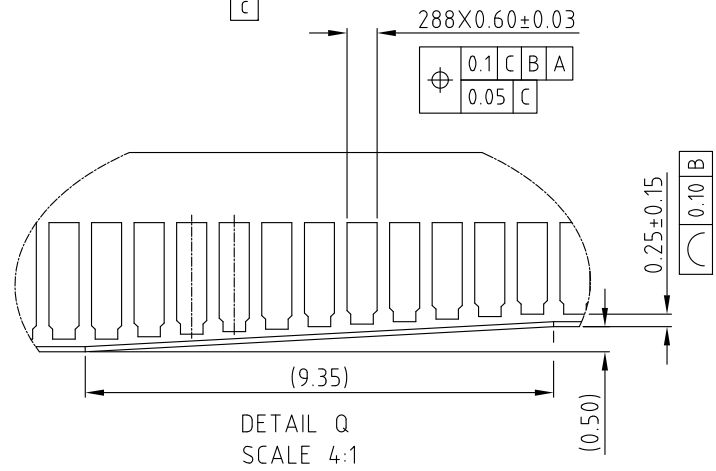
OPTION 1  
DETAIL M  
SCALE 5:1



OPTION 2



DETAIL N  
SCALE 1:1



DETAIL Q  
SCALE 4:1

UNLESS OTHERWISE SPECIFIED TOLERANCES U.S. METRIC		APPROVAL	DATE	Amphenol	
.X +/-	0.35	DRAWN	Kellen.Yang		
.XX +/-	0.25	CHECKED			
.XXX +/-	0.15	CHECKED		TITLE	
FRACTIONS +/-	3"	DRAWING FILE : DRAWING\DDR\CDDR503XXXXXXD		DDR5 288P U DIMM CONNECTOR	
ANGLES +/-		ANGLE OF PROJECTION		SIZE	DRAWING NO.
FOR MATERIALS AND FINISHES SEE NOTES		REMOVE SHARP EDGES		A3	C DDR503XXXXXXD
DIMENSIONS		SCALE		NONE	REV. C
U.S. (METRIC)	INCHES (MM)	SHEET 3 OF 6			



CUSTOMER DRAWING

REVISIONS				
SYM	ECN	DESCRIPTION	DATE	APPROVED
		SEE SHEET1		

D

C

B

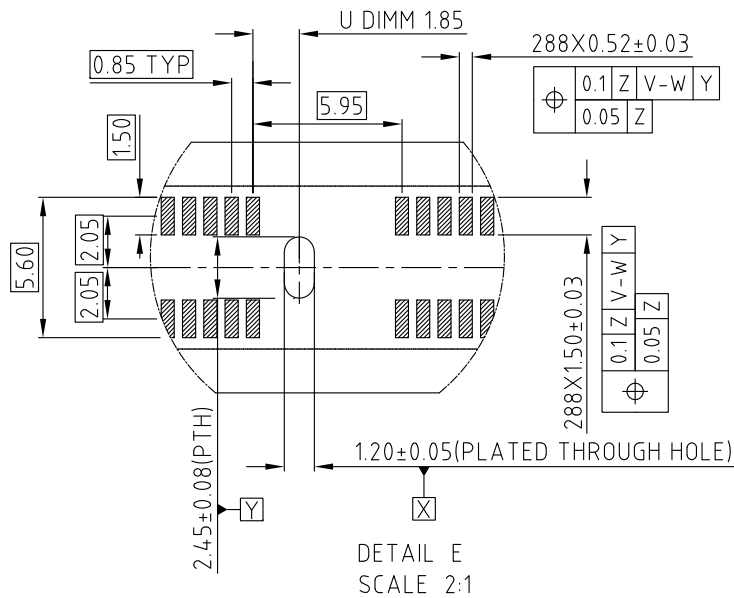
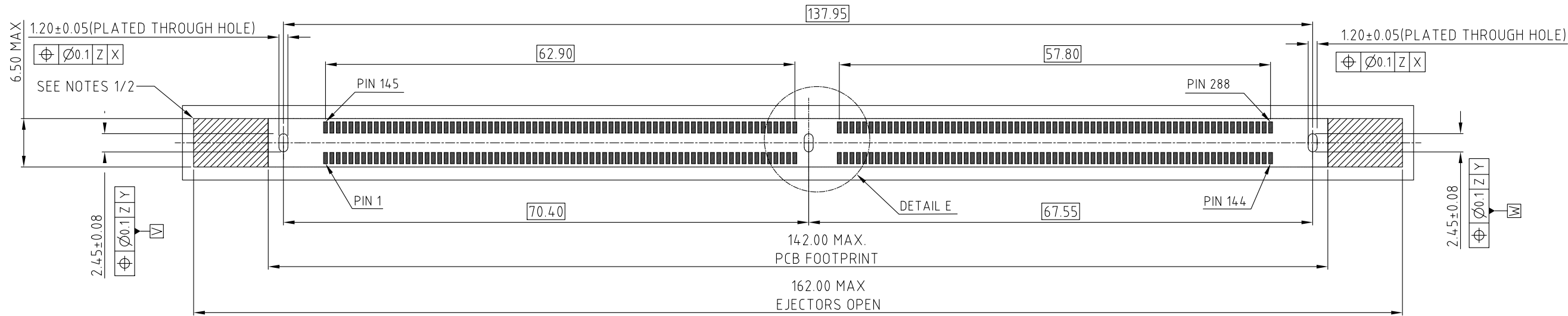
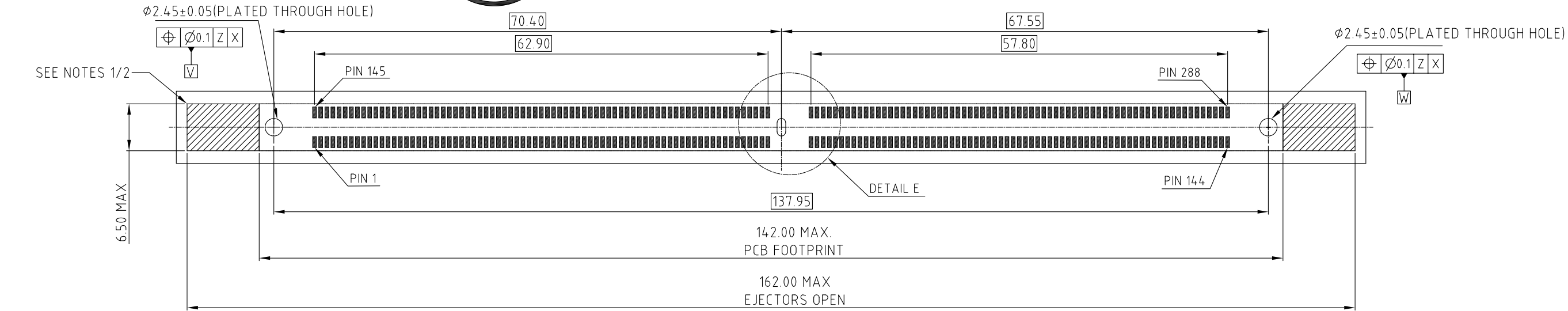
A

D

C

B

A



- ADDITIONAL NOTES:
- KEEP OUT CROSS HATCH IS RESERVED FOR SOCKET EJECTORS AT BOTH ENDS.
  - KEEP OUT ZONE IS HEIGHT LIMITED PER NOTE 1.
  - RECOMMENDED STENCIL THICKNESS:

REFLOW CONDITION	THICKNESS OF STENCIL
AIR	0.18MM MIN
NITROGEN	0.18MM MIN
REWORK	0.20MM MIN

RECOMMENDED PCB LAYOUT  
MORE INFORMATION REFER TO JEDEC SO-023

UNLESS OTHERWISE SPECIFIED TOLERANCES		APPROVAL		DATE	Amphenol		
		DRAWN	Kellen.Yang	Mar.05,2024			
.X +/-	0.35	CHECKED			TITLE		
.XX +/-	0.25	CHECKED					
.XXX +/-	0.15				DDR5 288P U DIMM CONNECTOR		
FRACTIONS +/-	3"	DRAWING FILE : DRAWING\DDR\CDDR503XXXXXXD			SIZE	DRAWING NO.	REV.
ANGLES +/-		ANGLE OF PROJECTION			A3	C DDR503XXXXXXD	C
FOR MATERIALS AND FINISHES SEE NOTES		REMOVE SHARP EDGES			SCALE	NONE	SHEET 4 OF 6
DIMENSIONS		U.S. INCHES					
		(METRIC) (MM)					

This document is the property of Amphenol Corporation and is delivered on the express condition that it is not to be disclosed, reproduced or used, in whole or in part, for manufacture or sale by anyone other than Amphenol Corporation without its prior consent, & that no right is granted to disclose or to use any information in this document.

CUSTOMER DRAWING

REVISIONS				
SYM	ECN	DESCRIPTION	DATE	APPROVED
		SEE SHEET1		

PACKING TRAY DRAWING

The top view shows a rectangular tray with overall dimensions of 315.0 mm width and 137.0 mm height. The interior is divided into sections labeled "HF", "P567DDR5004", "Amphenol", and "HIPS". A central vertical channel is 160.0 mm wide. Side margins are 77.5 mm. Corner radii are specified as R8.5 and R8.0 TYP. A "PIN 1 POSITION" is indicated at the bottom left corner. Section lines A-A are shown across the tray.

Section A-A shows the cross-section of the tray with a total depth of 26.00 mm. It features a base layer labeled "Amphenol 11V" and side walls. The distance between the inner walls is 2X82.00 mm.

SECTION A-A

NOTES:

- 1. MATERIAL: HIPS, BLACK
- 2. QUANTITY:32PCS/TRAY

UNLESS OTHERWISE SPECIFIED  
TOLERANCES

	U.S.	METRIC
.X	+/-	0.35
.XX	+/-	0.25
.XXX	+/-	0.15
FRACTIONS	+/-	
ANGLES	+/-	3°

FOR MATERIALS AND FINISHES  
SEE NOTES

REMOVE SHARP EDGES

DIMENSIONS

U.S.	INCHES
(METRIC)	(MM)

APPROVAL

DATE

DRAWN Kellen.Yang Mar.05,2024

CHECKED

CHECKED

DRAWING FILE :  
DRAWING\DDR\CDDR503XXXXXXD

ANGLE OF PROJECTION

Amphenol

TITLE

DDR5 288P U DIMM CONNECTOR

SIZE	DRAWING NO.	REV.
A3	C DDR503XXXXXXD	C
SCALE	NONE	SHEET 5 OF 6

PDS: Rev:C

STATUS:Released

Printed: Mar 11, 2024

This document is the property of Amphenol Corporation and is delivered on the express condition that it is not to be disclosed, reproduced or used, in whole or in part, for manufacture or sale by anyone other than Amphenol Corporation without its prior consent, & that no right is granted to disclose or to use any information in this document.

CUSTOMER DRAWING

REVISIONS				
SYM	ECN	DESCRIPTION	DATE	APPROVED
		SEE SHEET1		

PACKING TRAY DRAWING

The top view shows a rectangular tray with overall dimensions of 315.0 mm width and 137.0 mm height. The interior is divided into sections labeled "HF", "P567DDR5004", "Amphenol", and "HIPS". A central vertical channel is 160.0 mm wide. Side margins are 77.5 mm. Corner radii are specified as R8.5 and R8.0 TYP. A "PIN 1 POSITION" is indicated at the bottom left corner. Section lines A-A are shown across the tray.

SECTION A-A shows a cross-section of the tray with a total thickness of 26.00 mm. It features two main raised sections separated by a recessed area. Dimensions include a length of 2X82.00 mm for the raised portions. The material is identified as "Amphenol 11V".

SECTION A-A

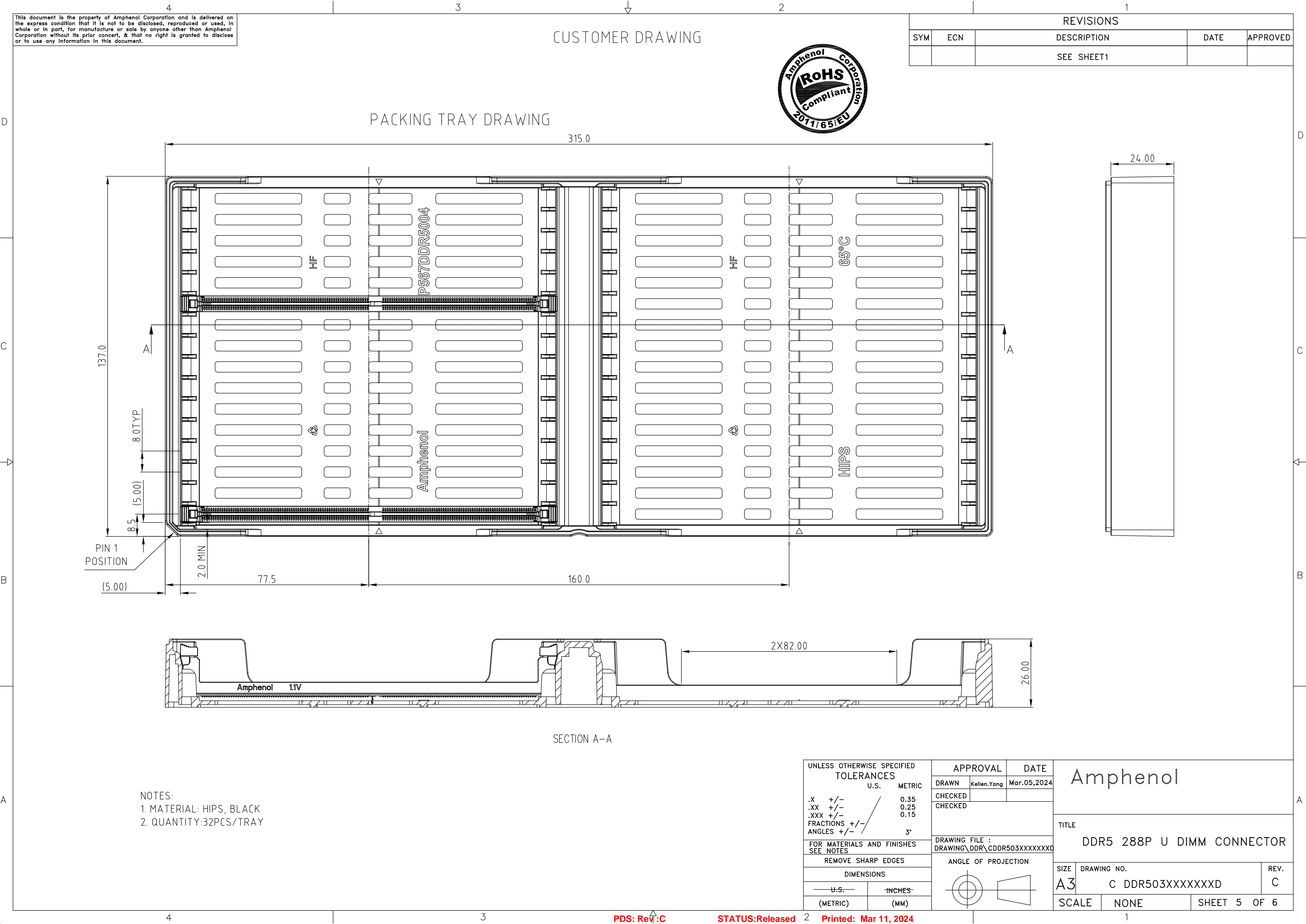
NOTES:

- 1. MATERIAL: HIPS, BLACK
- 2. QUANTITY:32PCS/TRAY

UNLESS OTHERWISE SPECIFIED TOLERANCES		APPROVAL		DATE	
U.S. METRIC		DRAWN	Kellen.Yang	Mar.05,2024	
.X +/-	0.35	CHECKED			
.XX +/-	0.25	CHECKED			
.XXX +/-	0.15				
FRACTIONS +/-		DRAWING FILE : DRAWING\DDR\CDDR503XXXXXXD			
ANGLES +/-	3°	ANGLE OF PROJECTION			
FOR MATERIALS AND FINISHES SEE NOTES					
REMOVE SHARP EDGES					
DIMENSIONS					
— U.S. —      — INCHES —		SIZE		DRAWING NO.	
(METRIC)	(MM)	A3	C DDR503XXXXXXD		REV. C
		SCALE	NONE	SHEET 5 OF 6	

Amphenol

TITLE  
DDR5 288P U DIMM CONNECTOR



This document is the property of Amphenol Corporation and is delivered on the express condition that it is not to be disclosed, reproduced or used, in whole or in part, for manufacture or sale by anyone other than Amphenol Corporation without its prior consent, & that no right is granted to disclose or to use any information in this document.

CUSTOMER DRAWING

REVISIONS				
SYM	ECN	DESCRIPTION	DATE	APPROVED
		SEE SHEET1		

PACKING TRAY DRAWING

SECTION A-A

NOTES:

- 1. MATERIAL: HIPS, BLACK
- 2. QUANTITY:32PCS/TRAY

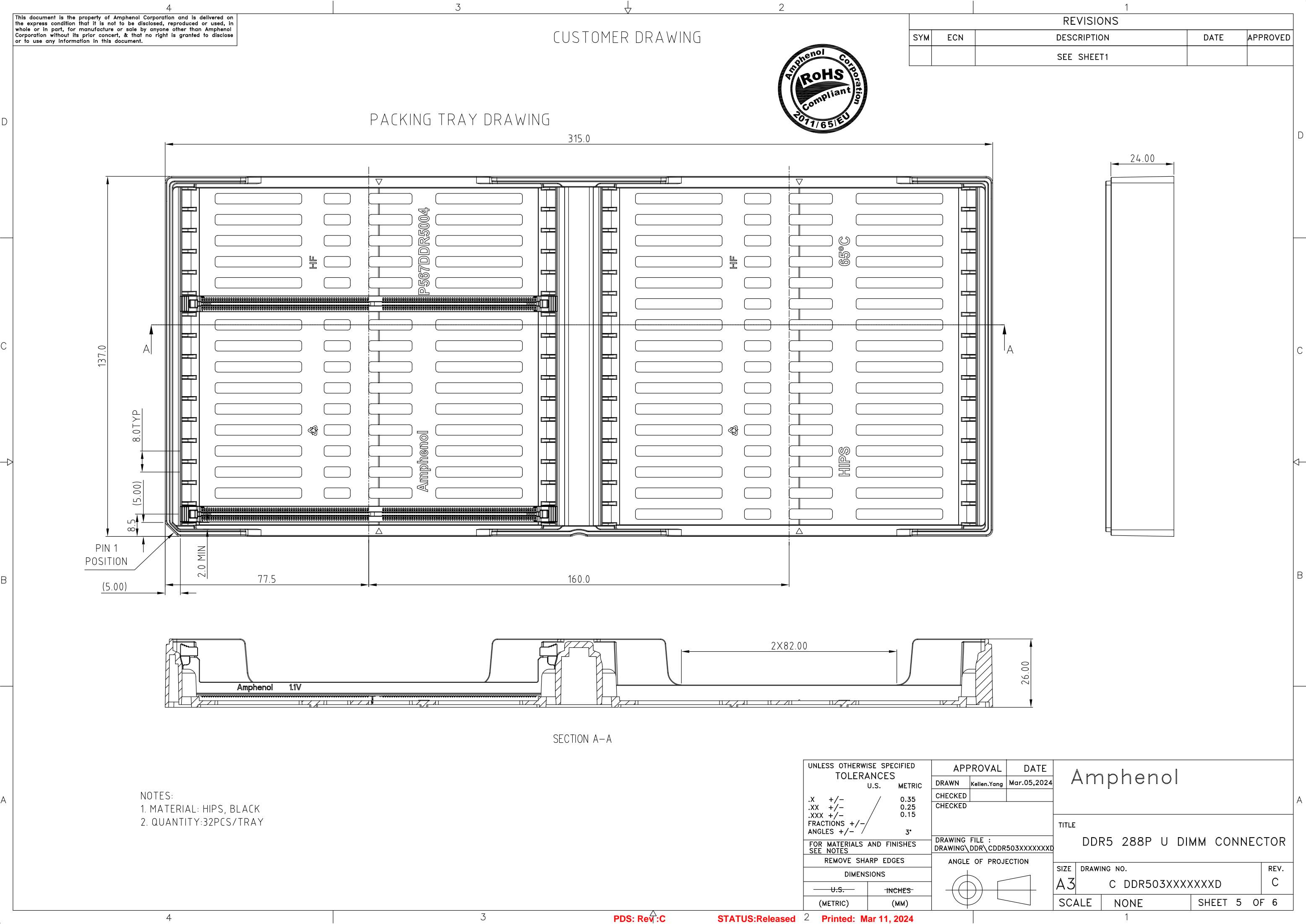
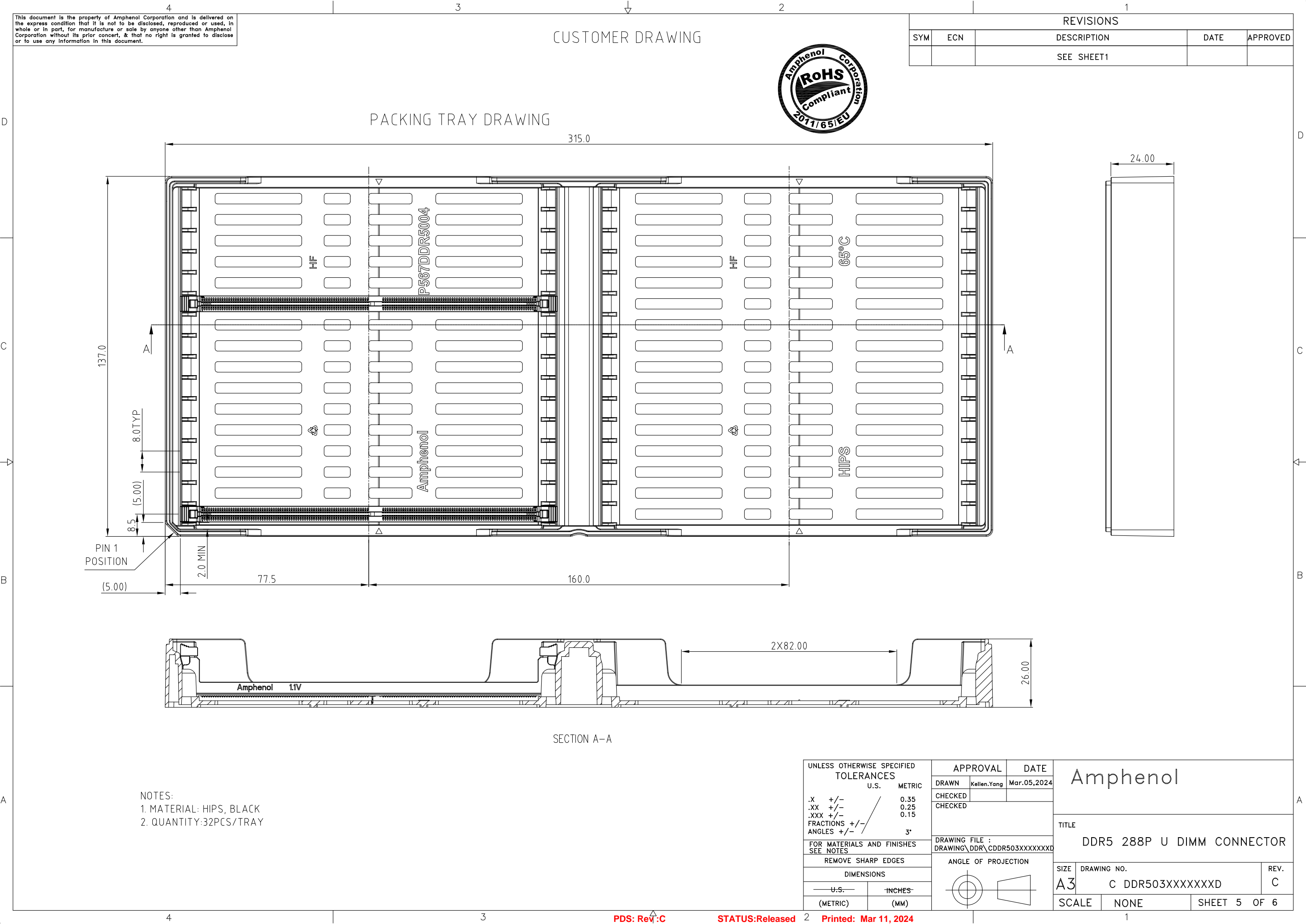
UNLESS OTHERWISE SPECIFIED TOLERANCES		APPROVAL		DATE	
U.S. METRIC		DRAWN	Kellen.Yang	Mar.05,2024	
.X +/-	0.35	CHECKED			
.XX +/-	0.25	CHECKED			
.XXX +/-	0.15				
FRACTIONS +/-		DRAWING FILE : DRAWING\DDR\CDDR503XXXXXXD			
ANGLES +/-	3°	ANGLE OF PROJECTION			
FOR MATERIALS AND FINISHES SEE NOTES					
REMOVE SHARP EDGES					
DIMENSIONS					
— U.S. —	"INCHES"	SIZE		DRAWING NO.	
(METRIC)	(MM)	A3		C DDR503XXXXXXD	
		SCALE		NONE	SHEET 5 OF 6

Rev: C

Status: Released

Printed: Mar 11, 2024

TITLE	
DDR5 288P U DIMM CONNECTOR	
REV.	C



This document is the property of Amphenol Corporation and is delivered on the express condition that it is not to be disclosed, reproduced or used, in whole or in part, for manufacture or sale by anyone other than Amphenol Corporation without its prior consent, & that no right is granted to disclose or to use any information in this document.

CUSTOMER DRAWING

REVISIONS				
SYM	ECN	DESCRIPTION	DATE	APPROVED
		SEE SHEET1		

PACKING TRAY DRAWING

The technical drawing shows a rectangular packing tray with overall dimensions of 315.0 mm width and 137.0 mm height. The top view features two main sections separated by a central divider. Each section contains multiple rows of rectangular slots. Labels include "HF", "P567DDR5004", "Amphenol", "HIPS", and "65°C". A dimension of 24.00 mm is shown for a specific slot width. The side view, labeled "SECTION A-A", shows the tray's profile with a height of 26.00 mm and a length of 2X82.00 mm. It also indicates a "PIN 1 POSITION" and a "2.0 MIN" gap. Various other dimensions like 137.0, 8.0 TYP, 8.5, (5.00), 77.5, 160.0, and 8 are provided for precise manufacturing specifications.

NOTES:

- 1. MATERIAL: HIPS, BLACK
- 2. QUANTITY:32PCS/TRAY

UNLESS OTHERWISE SPECIFIED TOLERANCES		APPROVAL		DATE	
U.S. METRIC		DRAWN	Kellen.Yang	Mar.05,2024	
.X +/- 0.35		CHECKED			
.XX +/- 0.25		CHECKED			
.XXX +/- 0.15					
FRACTIONS +/-		DRAWING FILE : DRAWING\DDR\CDDR503XXXXXXD			
ANGLES +/- 3°		ANGLE OF PROJECTION			
FOR MATERIALS AND FINISHES SEE NOTES		TITLE			
REMOVE SHARP EDGES		DDR5 288P U DIMM CONNECTOR			
DIMENSIONS		SIZE			
U.S. INCHES		A3		DRAWING NO. C DDR503XXXXXXD	
(METRIC) (MM)		SCALE		REV. C	
		NONE		SHEET 5 OF 6	

PDS: Rev:C

STATUS:Released

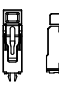
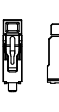
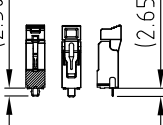
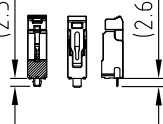
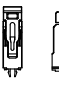
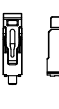
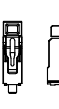
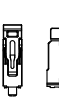
Printed: Mar 11, 2024

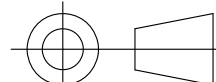
</



## CUSTOMER DRAWING

— DAY  
— MONTH  
— YEAR

SEQUENCE NUMBER		
CODE	OPTION DESCRIPTION	FIGURE DIM "H"
001	1. STANDARD HOUSING 2. STANDARD LATCH 3. FORK LOCK	 (2.50)
002	1. STANDARD HOUSING 2. STANDARD LATCH 3. METAL TAB	 (2.65)
003	1. STANDARD HOUSING 2. STANDARD LATCH 3. ONE FORK LOCK IN MIDDLE, TWO TABS ON BOTH SIDES	 (2.50) (2.65)
004	1. STANDARD HOUSING 2. SHORT LATCH 3. ONE FORK LOCK IN MIDDLE, TWO TABS ON BOTH SIDES	 (2.50) (2.65)
005	1. STANDARD HOUSING 2. SHORT LATCH 3. FORK LOCK	 (2.50)
006	1. STANDARD HOUSING 2. SHORT LATCH 3. METAL TAB	 (2.65)
007	1. STANDARD HOUSING 2. STANDARD LATCH 3. METAL TAB	 (1.85)
008	1. STANDARD HOUSING 2. SHORT LATCH 3. METAL TAB	 (1.85)
.....		

UNLESS OTHERWISE SPECIFIED TOLERANCES		APPROVAL		DATE		Amphenol	
U.S. METRIC		DRAWN Kellen.Yang		Mar.05,2024			
.X +/— 0.35		CHECKED		TITLE		DDR5 288P U DIMM CONNECTOR	
.XX +/— 0.25							
.XXX +/— 0.15		CHECKED					
FRACTIONS +/-		DRAWING FILE :		DDR5 288P U DIMM CONNECTOR			
ANGLES +/- 3°		DRAWING \D\R\CDDR503XXXXXXD					
FOR MATERIALS AND FINISHES SEE NOTES		ANGLE OF PROJECTION		SIZE		REV.	
REMOVE SHARP EDGES				DRAWING NO.		C	
DIMENSIONS				A3		C DDR503XXXXXXD	
— U.S. —				SCALE		NONE	
(METRIC)							
— INCHES —							
(MM)							

