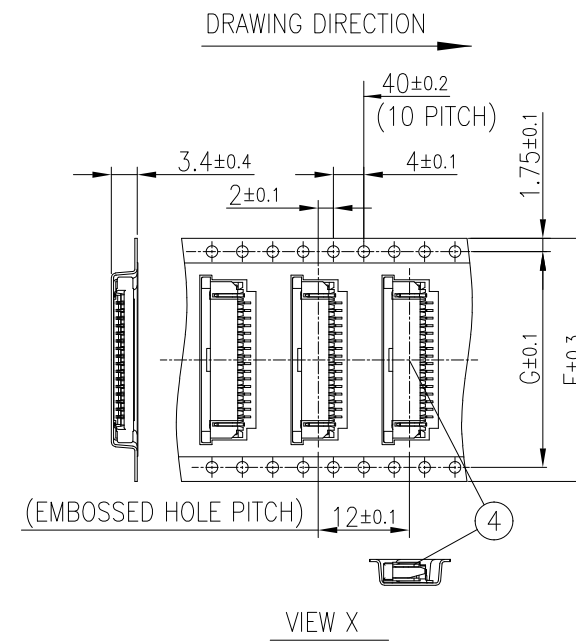
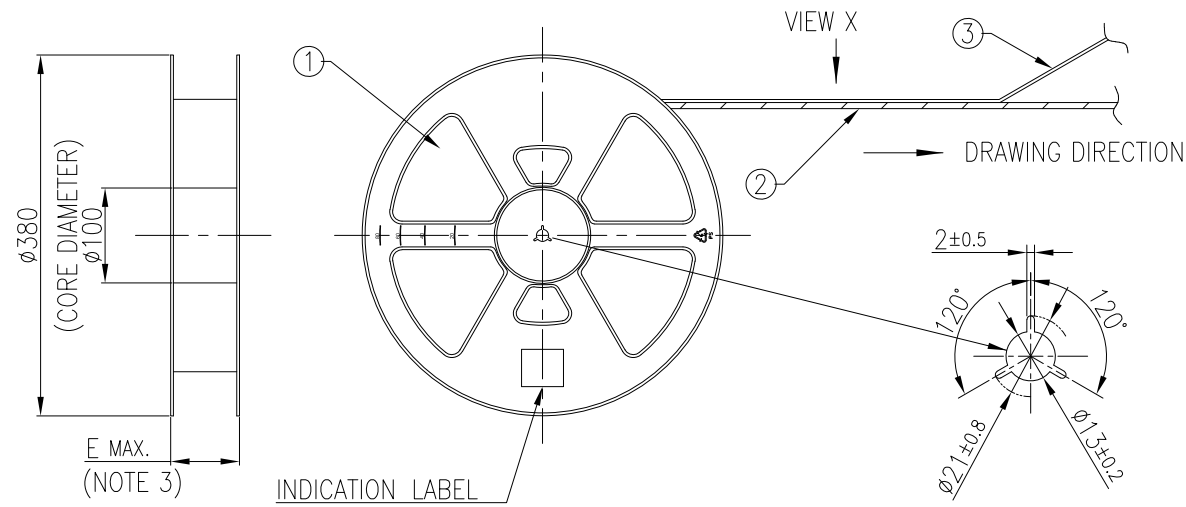


PRODUCT NO.
SFW__R-5STE1LF

CAT. NO. & DIMENSIONS

△ FOR E1 PACKAGING OPTION



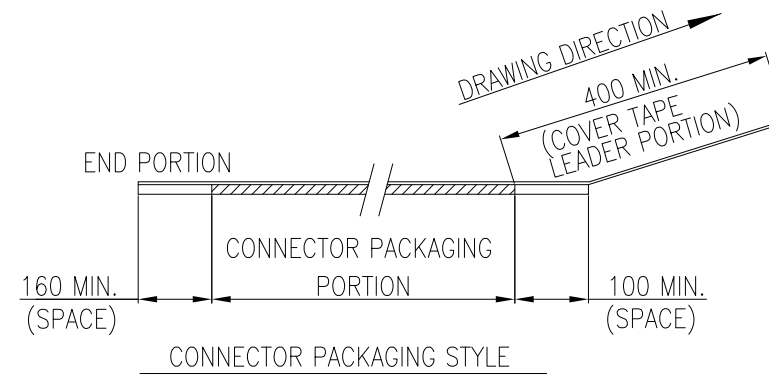
NO. OF CONT (n)	CAT. NO.	DIMENSIONS		
		△E	F	G
4	SFW4R-5STE1LF	22.4	16	—
5	SFW5R-5STE1LF	30.4	24	—
6	SFW6R-5STE1LF	30.4	24	—
7	SFW7R-5STE1LF	30.4	24	—
8	SFW8R-5STE1LF	30.4	24	—
9	SFW9R-5STE1LF	30.4	24	—
10	SFW10R-5STE1LF	30.4	24	—
11	SFW11R-5STE1LF	30.4	24	—
12	SFW12R-5STE1LF	30.4	24	—
13	SFW13R-5STE1LF	38.4	32	28.4
14	SFW14R-5STE1LF	38.4	32	28.4
15	SFW15R-5STE1LF	38.4	32	28.4
16	SFW16R-5STE1LF	38.4	32	28.4
17	SFW17R-5STE1LF	50.4	44	40.4
18	SFW18R-5STE1LF	50.4	44	40.4
19	SFW19R-5STE1LF	50.4	44	40.4
20	SFW20R-5STE1LF	50.4	44	40.4
21	SFW21R-5STE1LF	50.4	44	40.4
22	SFW22R-5STE1LF	50.4	44	40.4
23	SFW23R-5STE1LF	50.4	44	40.4
24	SFW24R-5STE1LF	50.4	44	40.4
25	SFW25R-5STE1LF	50.4	44	40.4
26	SFW26R-5STE1LF	50.4	44	40.4
27	SFW27R-5STE1LF	50.4	44	40.4
28	SFW28R-5STE1LF	62.4	56	52.4
29	SFW29R-5STE1LF	62.4	56	52.4
30	SFW30R-5STE1LF	62.4	56	52.4

MATERIAL TABLE

PT. NO.	PARTS NAME	CAT. NO.	MATERIAL	COLOR
1	REEL		△ POLYSTYRENE	△ BLACK
2	EMBOSS TAPE		PS	TRANSPARENT
3	COVER TAPE		POLYESTER,POLYETHYLENE	TRANSPARENT
4	CONNECTOR	SFW__R-5ST__LF	SEE SHEET 2	

PACKAGING OPTION TABLE

PRODUCT NUMBER	PACKAGING OPTION	REEL MATERIAL	REEL DIAMETER	CONNECTOR QUANTITY
SFW__R-5STE1LF	E1	△ PLASTIC	△ ø380	2000 / REEL

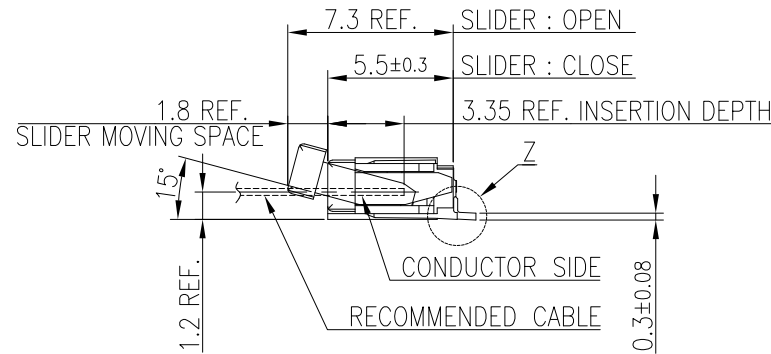
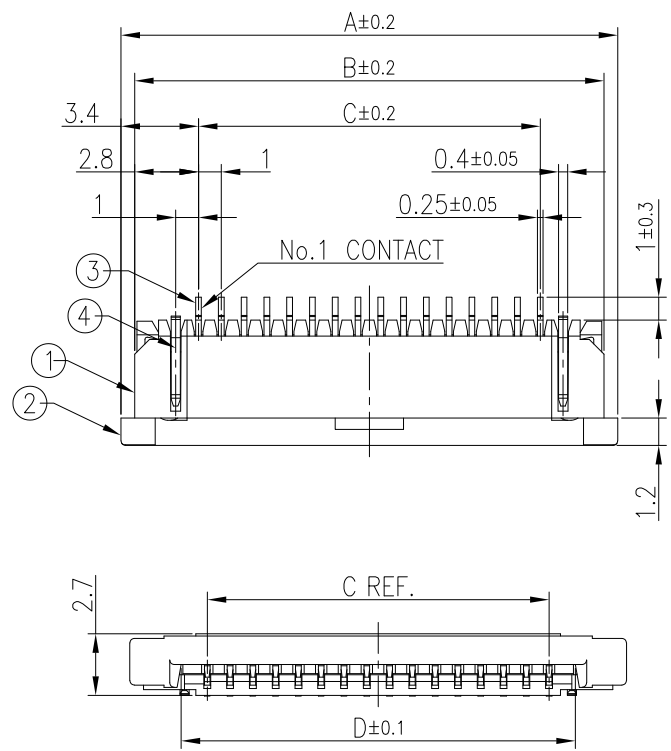


NOTES

- THIS IS PLASTIC TAPE PACKAGED CONNECTOR DESIGNED TO TERMINATE CIC AND COPES WITH AUTOMATIC MOUNTING (SMT).
- SEE JIS C 0806 (PACKING OF ELECTRONIC COMPONENTS ON CONTINUOUS TAPES (SURFACE MOUNTING DEVICES)) FOR SHAPE AND DIMENSIONS OF PLASTIC (EMBOSS) TAPE AND REEL.
- E DIMENSION IS PORTION OF THE CORE.

mat'l. code SEE_TABLE		surface ISO 1302 ✓		tolerance ISO 406 ISO 1101		projection MM		product family 58RF	
ltr A		ecn no S.W		date 2023-12-20		angles linear 0°±5'		title PLASTIC TAPE PACKAGED 1mm CONTACT SPACING CONNECTOR (Cat. No. SFW__R-5STE1LF)	
dr S.WATANABE		2023-12-20		enr S.WATANABE		2023-12-20		dwg no 10172243	
chr AN.MUHAMMAD-NABEEL		2023-12-20		app Y.KAMEDA		2023-12-20		sheet 1 of 5 size A3	
sheet index		revision sheet		A A A A A A		1 2 3 4 5		type PRODUCT CUSTOMER DRAWING	

PRODUCT NO.
SFW__R-5ST__LF



CAT. NO. & DIMENSIONS

NO. OF CONT (n)	CAT. NO.	DIMENSIONS			
		A	B	C	D
4	SFW4R-5ST__LF	9.8	8.6	3.0	5.3
5	SFW5R-5ST__LF	10.8	9.6	4.0	6.3
6	SFW6R-5ST__LF	11.8	10.6	5.0	7.3
7	SFW7R-5ST__LF	12.8	11.6	6.0	8.3
8	SFW8R-5ST__LF	13.8	12.6	7.0	9.3
9	SFW9R-5ST__LF	14.8	13.6	8.0	10.3
10	SFW10R-5ST__LF	15.8	14.6	9.0	11.3
11	SFW11R-5ST__LF	16.8	15.6	10.0	12.3
12	SFW12R-5ST__LF	17.8	16.6	11.0	13.3
13	SFW13R-5ST__LF	18.8	17.6	12.0	14.3
14	SFW14R-5ST__LF	19.8	18.6	13.0	15.3
15	SFW15R-5ST__LF	20.8	19.6	14.0	16.3
16	SFW16R-5ST__LF	21.8	20.6	15.0	17.3
17	SFW17R-5ST__LF	22.8	21.6	16.0	18.3
18	SFW18R-5ST__LF	23.8	22.6	17.0	19.3
19	SFW19R-5ST__LF	24.8	23.6	18.0	20.3
20	SFW20R-5ST__LF	25.8	24.6	19.0	21.3
21	SFW21R-5ST__LF	26.8	25.6	20.0	22.3
22	SFW22R-5ST__LF	27.8	26.6	21.0	23.3
23	SFW23R-5ST__LF	28.8	27.6	22.0	24.3
24	SFW24R-5ST__LF	29.8	28.6	23.0	25.3
25	SFW25R-5ST__LF	30.8	29.6	24.0	26.3
26	SFW26R-5ST__LF	31.8	30.6	25.0	27.3
27	SFW27R-5ST__LF	32.8	31.6	26.0	28.3
28	SFW28R-5ST__LF	33.8	32.6	27.0	29.3
29	SFW29R-5ST__LF	34.8	33.6	28.0	30.3
30	SFW30R-5ST__LF	35.8	34.6	29.0	31.3

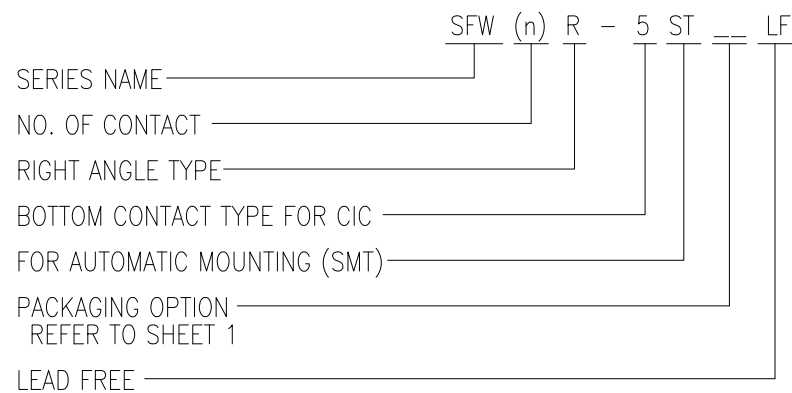
MATERIAL TABLE

PT. NO.	PARTS NAME	MATERIAL	Q'TY	NOTE
1	HOUSING	PPS RESIN GLASS REINFORCED (UL94V-0)	1	COLOR : BLACK Δ
2	SLIDER		1	COLOR : BLACK Δ
3	CONTACT	PHOSPHOR BRONZE	n	PLATING : (LEAD FREE) UNDER PLATING : 1.27um min. Ni FINISH PLATING : MATTE THIN TIN FOR CONTACT AREA : MATTE TIN 1.5um MIN. FOR SOLDER TAIL AREA
4	MOUNTING PLATE		2	PLATING : MATTE TIN 1.5um min. (LEAD FREE) NICKEL UNDER PLATING 1.27um min.

n : NO. OF CONTACTS

NOTES

- THIS PRODUCT IS THE BOTTOM CONTACT TYPE CONNECTOR DESIGNED TO TERMINATE CIC AND COPES WITH AUTOMATIC MOUNTING (SMT).
- FLATNESS OF CONTACT TERMINAL AND MOUNTING PLATE MUST BE WITHIN TOLERANCE IN DETAIL Z.
- THIS PRODUCT MEETS EUROPEAN UNION DIRECTIVES AND OTHER COUNTRY REGULATIONS AS DESCRIBED IN GS47-0004.
- THE HOUSING WILL WITHSTAND EXPOSURE TO 260°C PEAK TEMPERATURE FOR 10 SECONDS IN A REFLOW SOLDERING OVEN.
- APPLICATION SPEC : GS-20-111. PRODUCT SPEC : SC-SFW12.
- CATALOG NUMBER STRUCTURE IS AS FOLLOWINGS.



mat'l. code		surface		tolerance		projection		product family	
SEE_TABLE		ISO 1302 \checkmark		ISO 406 ISO 1101				58RF	
ltr	ecn no	dr	date	tolerances unless otherwise specified		MM		title	
A				angles	linear	0.X/±0.2		1mm SPACING SMT CONNECTOR	
				0°±2'		0.XX/±0.2		(Cat. No. SFW__R-5ST__LF)	
						0.XXX/±0.2		scale 3:1	
		dr	S.WATANABE	2023-12-20			dwg no		sheet 2 of 5
		enr	S.WATANABE	2023-12-20			10172243		A3
		chr	AN.MUHAMMAD-NABEEL	2023-12-20			type		PRODUCT CUSTOMER DRAWING
		appd	Y.KAMEDA	2023-12-20					
sheet index	revision sheet								



© 2016 AFCI

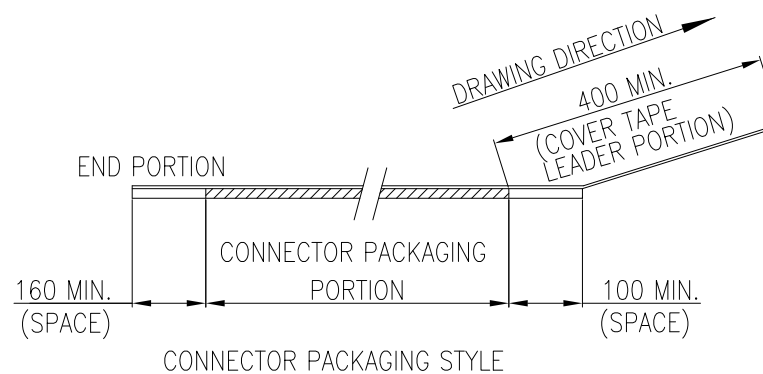
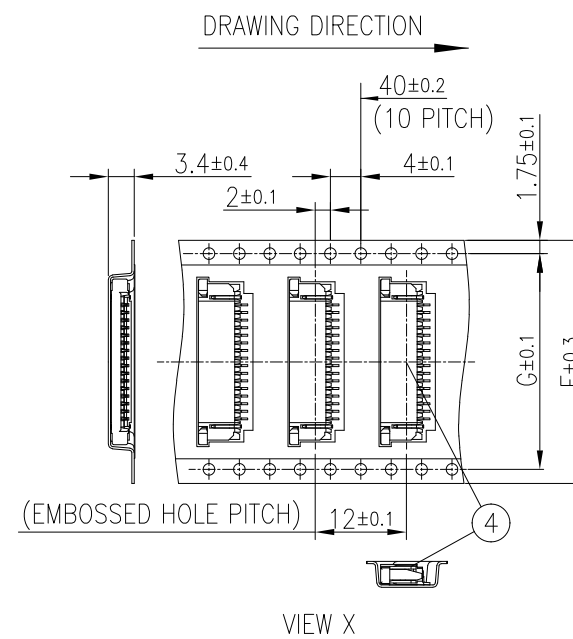
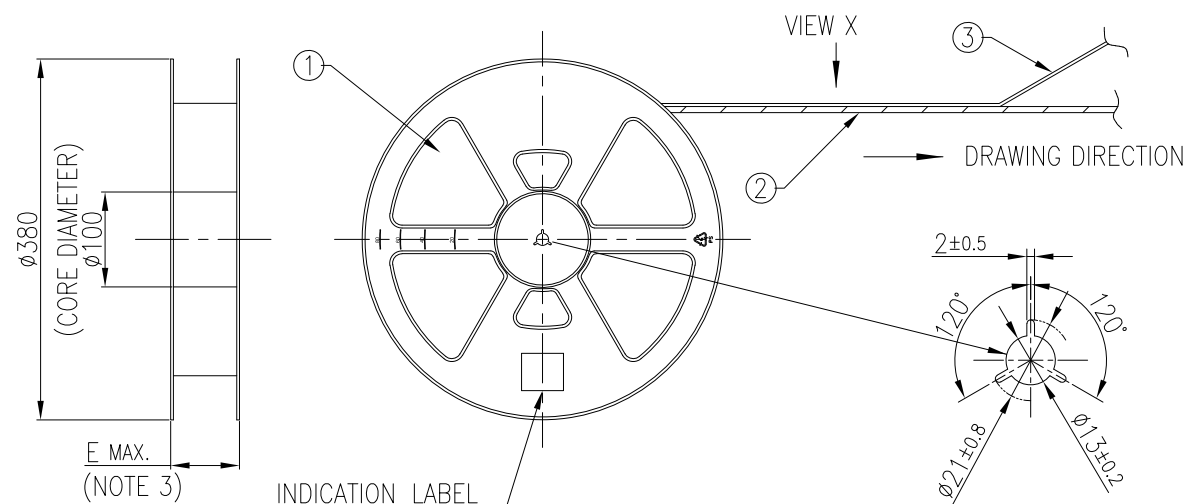
PRODUCT NO.

SFW__R-6STE1LF

CAT. NO. & DIMENSIONS

NO. OF CONT (n)	CAT. NO.	DIMENSIONS		
		△E	F	G
4	SFW4R-6STE1LF	22.4	16	—
5	SFW5R-6STE1LF	30.4	24	—
6	SFW6R-6STE1LF	30.4	24	—
7	SFW7R-6STE1LF	30.4	24	—
8	SFW8R-6STE1LF	30.4	24	—
9	SFW9R-6STE1LF	30.4	24	—
10	SFW10R-6STE1LF	30.4	24	—
11	SFW11R-6STE1LF	30.4	24	—
12	SFW12R-6STE1LF	30.4	24	—
13	SFW13R-6STE1LF	38.4	32	28.4
14	SFW14R-6STE1LF	38.4	32	28.4
15	SFW15R-6STE1LF	38.4	32	28.4
16	SFW16R-6STE1LF	38.4	32	28.4
17	SFW17R-6STE1LF	50.4	44	40.4
18	SFW18R-6STE1LF	50.4	44	40.4
19	SFW19R-6STE1LF	50.4	44	40.4
20	SFW20R-6STE1LF	50.4	44	40.4
21	SFW21R-6STE1LF	50.4	44	40.4
22	SFW22R-6STE1LF	50.4	44	40.4
23	SFW23R-6STE1LF	50.4	44	40.4
24	SFW24R-6STE1LF	50.4	44	40.4
25	SFW25R-6STE1LF	50.4	44	40.4
26	SFW26R-6STE1LF	50.4	44	40.4
27	SFW27R-6STE1LF	50.4	44	40.4
28	SFW28R-6STE1LF	62.4	56	52.4
29	SFW29R-6STE1LF	62.4	56	52.4
30	SFW30R-6STE1LF	62.4	56	52.4

△ FOR E1 PACKAGING OPTION



MATERIAL TABLE

PT. NO.	PARTS NAME	CAT. NO.	MATERIAL	COLOR
1	REEL		△ POLYSTYRENE	△ BLACK
2	EMBOSS TAPE		PS	TRANSPARENT
3	COVER TAPE		POLYESTER,POLYETHYLENE	TRANSPARENT
4	CONNECTOR	SFW__R-6ST__LF	SEE SHEET 4	

PACKAGING OPTION TABLE

PRODUCT NUMBER	PACKAGING OPTION	REEL MATERIAL	REEL DIAMETER	CONNECTOR QUANTITY
SFW__R-6STE1LF	E1	△ PLASTIC	△ φ380	2000 / REEL

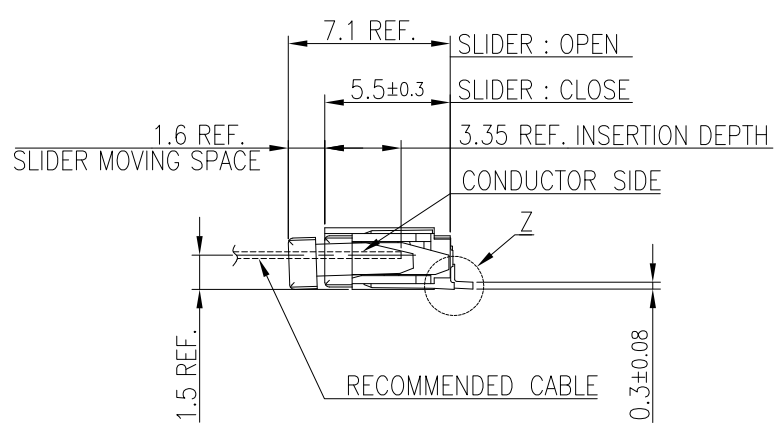
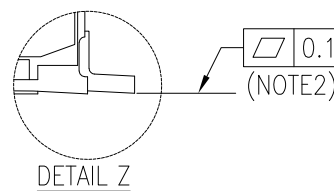
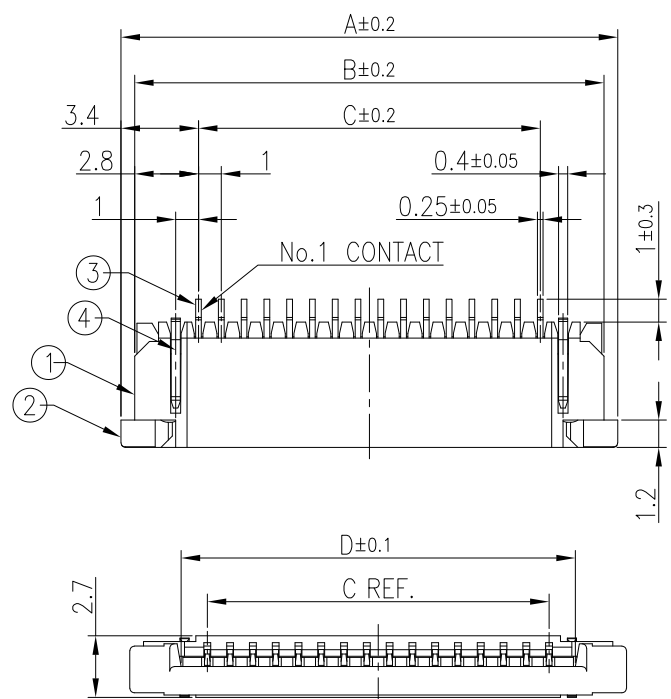
NOTES

- THIS IS PLASTIC TAPE PACKAGED CONNECTOR DESIGNED TO TERMINATE CIC AND COPES WITH AUTOMATIC MOUNTING (SMT).
- SEE JIS C 0806 (PACKING OF ELECTRONIC COMPONENTS ON CONTINUOUS TAPES (SURFACE MOUNTING DEVICES)) FOR SHAPE AND DIMENSIONS OF PLASTIC (EMBOSS) TAPE AND REEL.
- E DIMENSION IS PORTION OF THE CORE.

mat'l. code SEE_TABLE		surface ISO 1302 ✓	tolerance ISO 406 ISO 1101	projection MM	product family 58RF
ltr	ecn no	dr	date	tolerances unless otherwise specified	title PLASTIC TAPE PACKAGED 1mm CONTACT SPACING CONNECTOR (Cat. No. SFW__R-6STE1LF)
A				angles linear 0°±5'	
				0.X/±0.5 0.XX/±0.5 0.XXX/±0.5	dwg no sheet 3 of 5 size A3
				scale N/A	
		dr	S.WATANABE	2023-12-20	Amphenol FCI type PRODUCT CUSTOMER DRAWING
		enr	S.WATANABE	2023-12-20	
		chr	AN.MUHAMMAD-NABEEL	2023-12-20	
		app	Y.KAMEDA	2023-12-20	
sheet index	revision sheet				

PRODUCT NO.

SFW__R-6ST__LF



CAT. NO. & DIMENSIONS

NO. OF CONT (n)	CAT. NO.	DIMENSIONS			
		A	B	C	D
4	SFW4R-6ST__LF	9.8	8.6	3.0	5.3
5	SFW5R-6ST__LF	10.8	9.6	4.0	6.3
6	SFW6R-6ST__LF	11.8	10.6	5.0	7.3
7	SFW7R-6ST__LF	12.8	11.6	6.0	8.3
8	SFW8R-6ST__LF	13.8	12.6	7.0	9.3
9	SFW9R-6ST__LF	14.8	13.6	8.0	10.3
10	SFW10R-6ST__LF	15.8	14.6	9.0	11.3
11	SFW11R-6ST__LF	16.8	15.6	10.0	12.3
12	SFW12R-6ST__LF	17.8	16.6	11.0	13.3
13	SFW13R-6ST__LF	18.8	17.6	12.0	14.3
14	SFW14R-6ST__LF	19.8	18.6	13.0	15.3
15	SFW15R-6ST__LF	20.8	19.6	14.0	16.3
16	SFW16R-6ST__LF	21.8	20.6	15.0	17.3
17	SFW17R-6ST__LF	22.8	21.6	16.0	18.3
18	SFW18R-6ST__LF	23.8	22.6	17.0	19.3
19	SFW19R-6ST__LF	24.8	23.6	18.0	20.3
20	SFW20R-6ST__LF	25.8	24.6	19.0	21.3
21	SFW21R-6ST__LF	26.8	25.6	20.0	22.3
22	SFW22R-6ST__LF	27.8	26.6	21.0	23.3
23	SFW23R-6ST__LF	28.8	27.6	22.0	24.3
24	SFW24R-6ST__LF	29.8	28.6	23.0	25.3
25	SFW25R-6ST__LF	30.8	29.6	24.0	26.3
26	SFW26R-6ST__LF	31.8	30.6	25.0	27.3
27	SFW27R-6ST__LF	32.8	31.6	26.0	28.3
28	SFW28R-6ST__LF	33.8	32.6	27.0	29.3
29	SFW29R-6ST__LF	34.8	33.6	28.0	30.3
30	SFW30R-6ST__LF	35.8	34.6	29.0	31.3

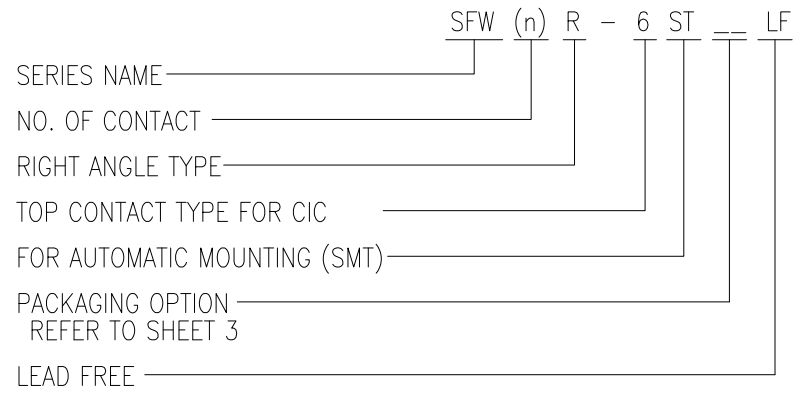
MATERIAL TABLE

PT. NO.	PARTS NAME	MATERIAL	Q'TY	NOTE
1	HOUSING	PPS RESIN GLASS REINFORCED (UL94V-0)	1	COLOR : BLACK Δ
2	SLIDER		1	COLOR : BLACK Δ
3	CONTACT	PHOSPHOR BRONZE	n	PLATING : (LEAD FREE) UNDER PLATING : 1.27um min. Ni FINISH PLATING : MATTE THIN TIN FOR CONTACT AREA : MATTE TIN 1.5um MIN. FOR SOLDER TAIL AREA
4	MOUNTING PLATE		2	PLATING : MATTE TIN 1.5um min. (LEAD FREE) NICKEL UNDER PLATING 1.27um min.

n : NO. OF CONTACTS

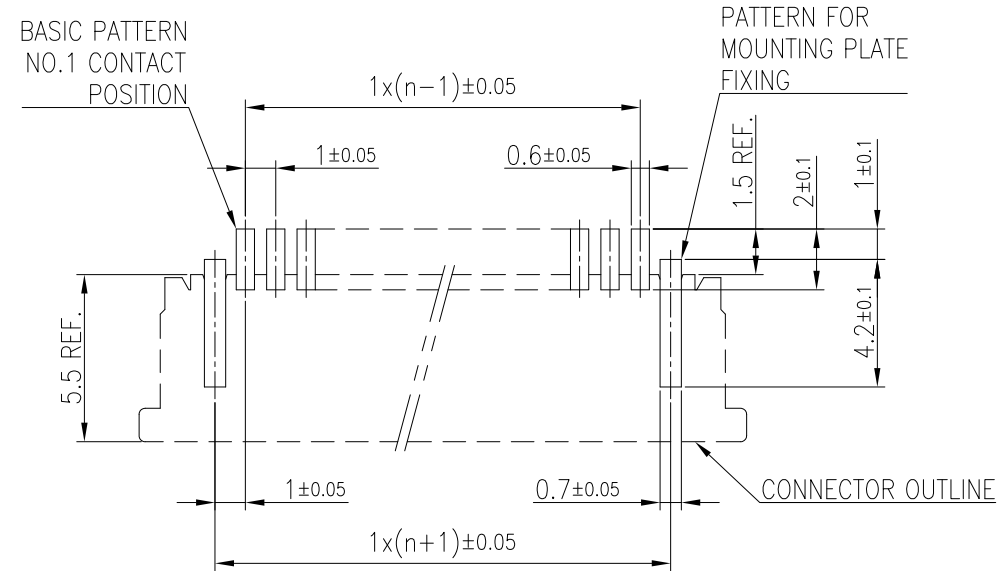
NOTES

1. THIS PRODUCT IS THE TOP CONTACT TYPE CONNECTOR DESIGNED TO TERMINATE CIC AND COPES WITH AUTOMATIC MOUNTING (SMT).
2. FLATNESS OF CONTACT TERMINAL AND MOUNTING PLATE MUST BE WITHIN TOLERANCE IN DETAIL Z.
3. THIS PRODUCT MEETS EUROPEAN UNION DIRECTIVES AND OTHER COUNTRY REGULATIONS AS DESCRIBED IN GS47-0004.
4. THE HOUSING WILL WITHSTAND EXPOSURE TO 260°C PEAK TEMPERATURE FOR 10 SECONDS IN A REFLOW SOLDERING OVEN.
5. APPLICATION SPEC : GS-20-111. PRODUCT SPEC : SC-SFW12.
6. CATALOG NUMBER STRUCTURE IS AS FOLLOWINGS.



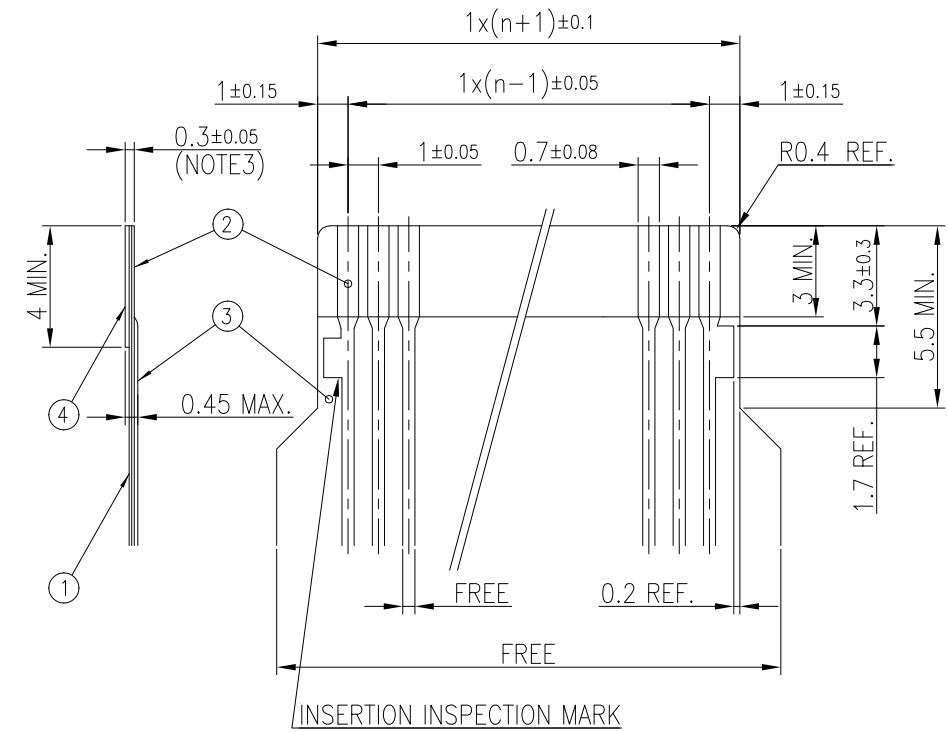
mat'l. code		surface		tolerance		projection		product family		
SEE_TABLE		ISO 1302 \checkmark		ISO 406 ISO 1101				58RF		
ltr	ecn no	dr	date	tolerances unless otherwise specified		MM		title		
A				angles	linear	0.X/±0.2		1mm SPACING SMT CONNECTOR		
				0°±2'		0.XX/±0.2		(Cat. No. SFW__R-6ST__LF)		
						0.XXX/±0.2		scale 3:1		
		dr	S.WATANABE	2023-12-20				dwg no		
		enr	S.WATANABE	2023-12-20				sheet 4 of 5		size
		chr	AN.MUHAMMAD-NABEEL	2023-12-20				10172243		A3
		appd	Y.KAMEDA	2023-12-20				type		PRODUCT CUSTOMER DRAWING
sheet index	revision sheet									

RECOMMENDED PC BOARD LAYOUT
(COMPONENT SIDE) (NOTE4, NOTE5)



RECOMMENDED CABLE (CIC)
(NOTE1, NOTE2)

n : NO. OF CONDUCTORS



PT. NO.	DESCRIPTION	MATERIAL	THICKNESS (um)	
1	BASE FILM	POLYIMIDE OR POLYESTER OR EQUIVALENT	75	25
2	CONDUCTOR	CARBON PASTE OVER SILVER PASTE	35	
3	OVERLAY	POLYIMIDE OR POLYESTER OR EQUIVALENT	—	
4	SUPPORTING TAPE	POLYESTER OR POLYIMIDE OR EQUIVALENT	188	250

NOTES

1. NO BURR AT EACH PORTION.
2. NO PEELING IN COMMON USE.
3. TOTAL THICKNESS LIMIT OF EACH MATERIAL (INCLUDING ADHESIVE AGENT) IS SPECIFIED.
4. RECOMMENDED STENCIL THICKNESS IS 120~150um.
5. RECOMMENDED STENCIL OPENING RATIO IS 100%.

mat'l. code SEE_TABLE		surface ISO 1302 ✓	tolerance ISO 406 ISO 1101	projection MM	product family 58RF
ltr	ecn no	dr	date	tolerances unless otherwise specified	title
A				angles linear 0.X/±0.3 0.XX/±0.3 0.XXX/±0.3	RECOMMENDED CABLE AND PCB (Cat. No. SFW__R-5/6STE1LF)
				0°±2'	scale 4:1
		dr	S.WATANABE	2023-12-20	dwg no
		enr	S.WATANABE	2023-12-20	sheet 5 of 5
		chr	AN.MUHAMMAD-NABEEL	2023-12-20	size
		appd	Y.KAMEDA	2023-12-20	10172243
					type
					PRODUCT CUSTOMER DRAWING
sheet index	revision sheet				A3