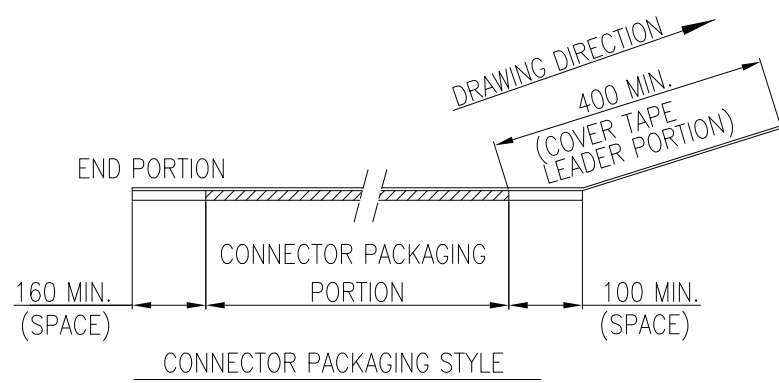
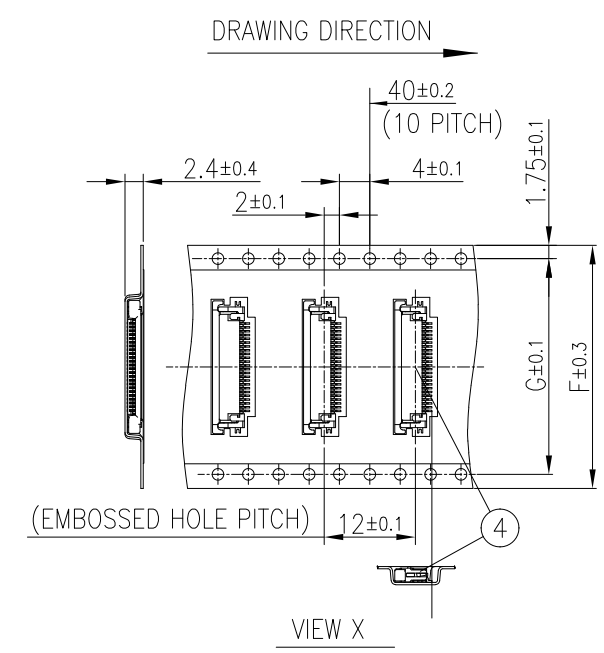
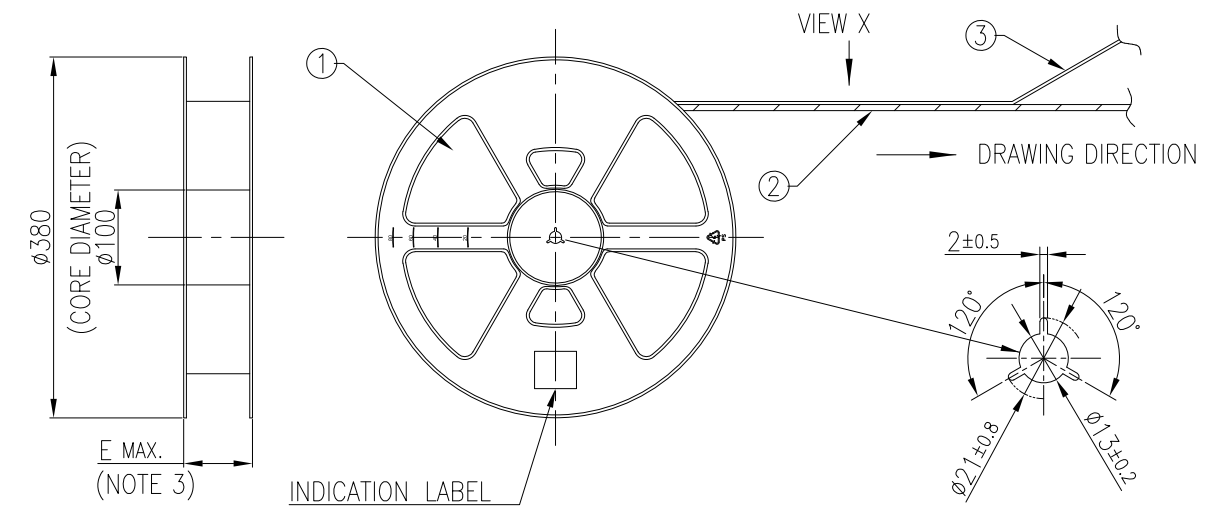


PRODUCT NO.
SFV__R-1STE1HLF
SFV__R-1STAE1HLF
SFV__R-1STBE1HLF

CAT. NO. & DIMENSIONS

NO. OF CONT (n)	CAT. NO.	DIMENSIONS		
		△E	F	G
4	SFV4R-1ST_E1HLF	22.4	16	—
5	SFV5R-1ST_E1HLF	22.4	16	—
6	SFV6R-1ST_E1HLF	22.4	16	—
7	SFV7R-1ST_E1HLF	30.4	24	—
8	SFV8R-1ST_E1HLF	30.4	24	—
9	SFV9R-1ST_E1HLF	30.4	24	—
10	SFV10R-1ST_E1HLF	30.4	24	—
11	SFV11R-1ST_E1HLF	30.4	24	—
12	SFV12R-1ST_E1HLF	30.4	24	—
13	SFV13R-1ST_E1HLF	30.4	24	—
14	SFV14R-1ST_E1HLF	30.4	24	—
15	SFV15R-1ST_E1HLF	30.4	24	—
16	SFV16R-1ST_E1HLF	30.4	24	—
17	SFV17R-1ST_E1HLF	30.4	24	—
18	SFV18R-1ST_E1HLF	30.4	24	—
19	SFV19R-1ST_E1HLF	30.4	24	—
20	SFV20R-1ST_E1HLF	30.4	24	—
21	SFV21R-1ST_E1HLF	30.4	24	—
22	SFV22R-1ST_E1HLF	30.4	24	—
23	SFV23R-1ST_E1HLF	38.4	32	28.4
24	SFV24R-1ST_E1HLF	38.4	32	28.4
25	SFV25R-1ST_E1HLF	38.4	32	28.4
26	SFV26R-1ST_E1HLF	38.4	32	28.4
27	SFV27R-1ST_E1HLF	38.4	32	28.4
28	SFV28R-1ST_E1HLF	38.4	32	28.4
29	SFV29R-1ST_E1HLF	38.4	32	28.4
30	SFV30R-1ST_E1HLF	38.4	32	28.4
31	SFV31R-1ST_E1HLF	50.4	44	40.4
32	SFV32R-1ST_E1HLF	50.4	44	40.4
33	SFV33R-1ST_E1HLF	50.4	44	40.4
34	SFV34R-1ST_E1HLF	50.4	44	40.4
35	SFV35R-1ST_E1HLF	50.4	44	40.4

△ FOR E1 PACKAGING OPTION



MATERIAL TABLE

PT. NO.	PARTS NAME	CAT. NO.	MATERIAL	COLOR
1	REEL		△ POLYSTYRENE	△ BLACK
2	EMBOSS TAPE		PS	TRANSPARENT
3	COVER TAPE		POLYESTER,POLYETHYLENE	TRANSPARENT
4	CONNECTOR	SFV__R-1ST__HLF	SEE SHEET 2	

PACKAGING OPTION TABLE

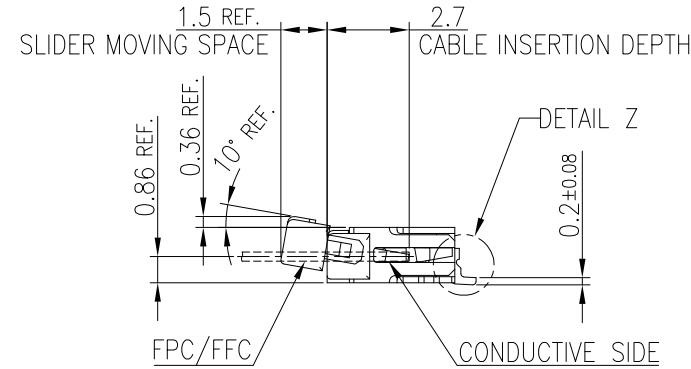
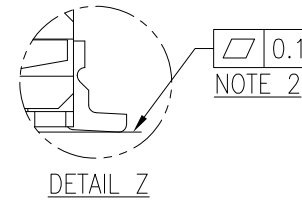
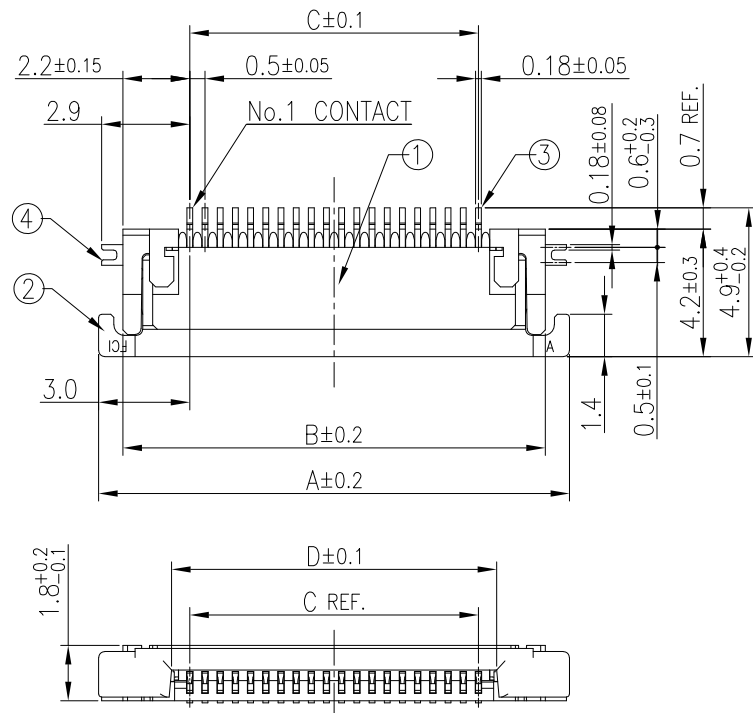
PRODUCT NUMBER	PACKAGING OPTION	REEL MATERIAL	REEL DIAMETER	CONNECTOR QUANTITY
SFV__R-1STE1HLF	E1	△ PLASTIC	△ ø380	3000 / REEL
SFV__R-1STAE1HLF				
SFV__R-1STBE1HLF				

NOTES

- THIS IS PLASTIC TAPE PACKAGED CONNECTOR DESIGNED TO TERMINATE FPC/FFC AND COPES WITH AUTOMATIC MOUNTING (SMT).
- SEE JIS C 0806 (PACKING OF ELECTRONIC COMPONENTS ON CONTINUOUS TAPES (SURFACE MOUNTING DEVICES)) FOR SHAPE AND DIMENSIONS OF PLASTIC (EMBOSS) TAPE AND REEL.
- E DIMENSION IS PORTION OF THE CORE.

mat'l. code SEE_TABLE		surface ISO 1302 ✓		tolerance ISO 406 ISO 1101		projection MM		product family 58EF	
ltr	ecn no	dr	date	tolerances unless otherwise specified		MM		title PLASTIC TAPE PACKAGED 0.5MM CONTACT SPACING CONNECTOR (Cat. No. SFV__R-1ST_E1HLF)	
A		S.W.	2023-12-21	angles	linear	MM		dwg no 10171070	
				0°±5'	0.XX/±0.5	scale N/A		sheet 1 of 6	
				dr	S.WATANABE	2023-12-21		size A3	
				enr	S.WATANABE	2023-12-21		type PRODUCT CUSTOMER DRAWING	
				chr	AN.MOHAMMAD-NABEEL	2023-12-21		Amphenol FCI	
				app	Y.KAMEDA	2023-12-21			
sheet index	revision sheet	A	A	A	A	A	A		
		1	2	3	4	5	6		

PRODUCT NO.
SFV__R-1ST__HLF
SFV__R-1STA__HLF
SFV__R-1STB__HLF



CAT. NO. & DIMENSIONS

NO. OF CONT (n)	CAT. NO.	DIMENSIONS			
		A	B	C	D
4	SFV4R-1ST__HLF	7.5	5.9	1.5	2.7
5	SFV5R-1ST__HLF	8.0	6.4	2.0	3.2
6	SFV6R-1ST__HLF	8.5	6.9	2.5	3.7
7	SFV7R-1ST__HLF	9.0	7.4	3.0	4.2
8	SFV8R-1ST__HLF	9.5	7.9	3.5	4.7
9	SFV9R-1ST__HLF	10.0	8.4	4.0	5.2
10	SFV10R-1ST__HLF	10.5	8.9	4.5	5.7
11	SFV11R-1ST__HLF	11.0	9.4	5.0	6.2
12	SFV12R-1ST__HLF	11.5	9.9	5.5	6.7
13	SFV13R-1ST__HLF	12.0	10.4	6.0	7.2
14	SFV14R-1ST__HLF	12.5	10.9	6.5	7.7
15	SFV15R-1ST__HLF	13.0	11.4	7.0	8.2
16	SFV16R-1ST__HLF	13.5	11.9	7.5	8.7
17	SFV17R-1ST__HLF	14.0	12.4	8.0	9.2
18	SFV18R-1ST__HLF	14.5	12.9	8.5	9.7
19	SFV19R-1ST__HLF	15.0	13.4	9.0	10.2
20	SFV20R-1ST__HLF	15.5	13.9	9.5	10.7
21	SFV21R-1ST__HLF	16.0	14.4	10.0	11.2
22	SFV22R-1ST__HLF	16.5	14.9	10.5	11.7
23	SFV23R-1ST__HLF	17.0	15.4	11.0	12.2
24	SFV24R-1ST__HLF	17.5	15.9	11.5	12.7
25	SFV25R-1ST__HLF	18.0	16.4	12.0	13.2
26	SFV26R-1ST__HLF	18.5	16.9	12.5	13.7
27	SFV27R-1ST__HLF	19.0	17.4	13.0	14.2
28	SFV28R-1ST__HLF	19.5	17.9	13.5	14.7
29	SFV29R-1ST__HLF	20.0	18.4	14.0	15.2
30	SFV30R-1ST__HLF	20.5	18.9	14.5	15.7
31	SFV31R-1ST__HLF	21.0	19.4	15.0	16.2
32	SFV32R-1ST__HLF	21.5	19.9	15.5	16.7
33	SFV33R-1ST__HLF	22.0	20.4	16.0	17.2
34	SFV34R-1ST__HLF	22.5	20.9	16.5	17.7
35	SFV35R-1ST__HLF	23.0	21.4	17.0	18.2

MATERIAL TABLE

PT. NO.	PARTS NAME	MATERIAL	Q'TY	NOTE
1	HOUSING	13~35pin : LCP RESIN GLASS REINFORCED (UL94V-0)	1	COLOR : BLACK (HALOGEN FREE)
		4~12pin : POLYAMIDE RESIN GLASS REINFORCED (UL94V-0)		
2	SLIDER	PPS RESIN GLASS REINFORCED (UL94V-0)	1	COLOR : BLACK (HALOGEN FREE)
3	CONTACT	PHOSPHOR BRONZE	n	PLATING : SEE PLATING OPTION (LEAD FREE)
4	MOUNTING PLATE		2	PLATING : MATTE TIN 1.5um min (LEAD FREE) NICKEL UNDER PLATING 1.27um min.

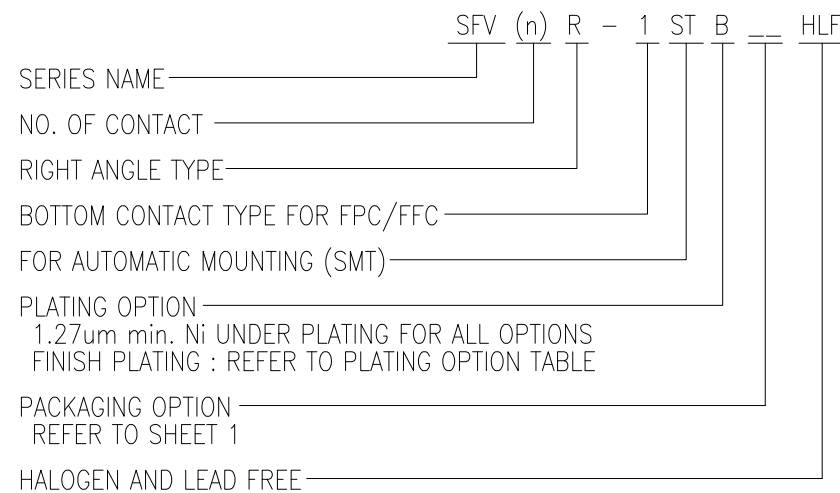
n : NO. OF CONTACTS

NOTES

- THIS PRODUCT IS THE BOTTOM CONTACT TYPE CONNECTOR DESIGNED TO TERMINATE FPC/FFC AND COPES WITH AUTOMATIC MOUNTING (SMT).
- FLATNESS OF CONTACT TERMINAL AND MOUNTING PLATE TO HOUSING MUST BE WITHIN TOLERANCE IN Z PORTION DETAILED DRAWING.
- THIS PRODUCT MEETS EUROPEAN UNION DIRECTIVES AND OTHER COUNTRY REGULATIONS AS DESCRIBED IN GS47-0004.
- THE HOUSING WILL WITHSTAND EXPOSURE TO 260°C PEAK TEMPERATURE FOR 10 SECONDS IN A REFLOW SOLDERING OVEN.
- APPLICATION SPEC : BJM-SFV101. PRODUCT SPEC : REFER TO PLATING OPTION TABLE.
- CATALOG NUMBER STRUCTURE IS AS FOLLOWINGS.

PLATING OPTION TABLE

PRODUCT NUMBER	PLATING OPTION	CONTACT PLATING	TERMINAL PLATING	PRODUCT SPEC
SFV__R-1ST__HLF	BRANK	MATTE THIN TIN PLATING	MATTE TIN : 1um min.	GS-12-645
SFV__R-1STA__HLF	A	GOLD : 0.05um min.	MATTE TIN : 1.5um min.	SC-SFV08
SFV__R-1STB__HLF	B	GOLD : 0.05um min. WITH Ni DAM	GOLD : 0.05um min.	SC-SFV08



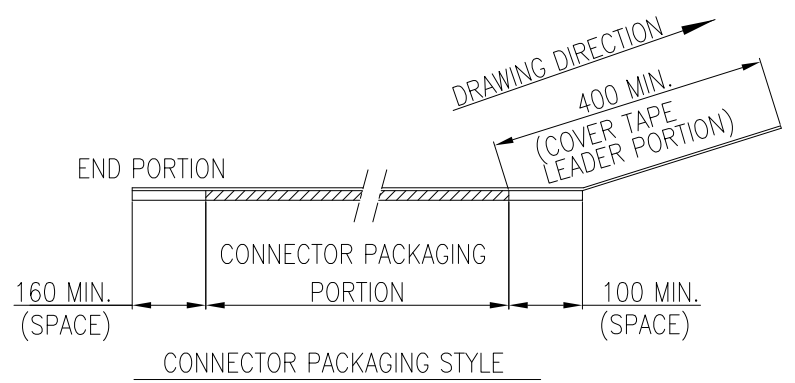
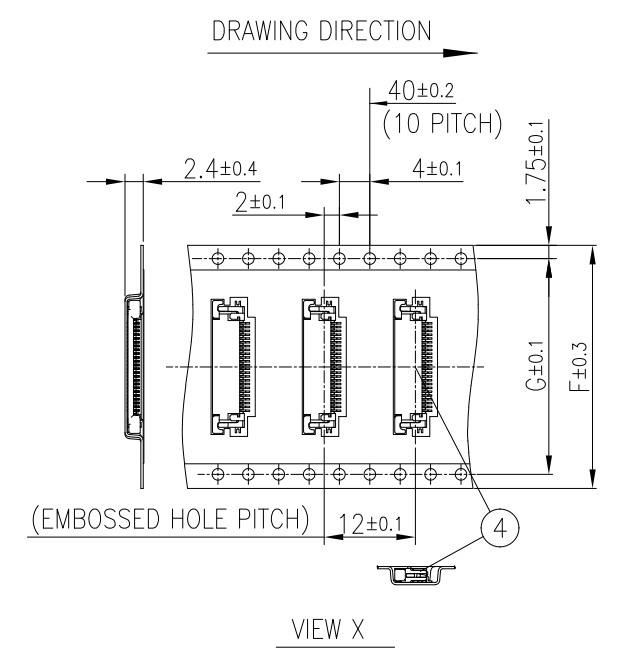
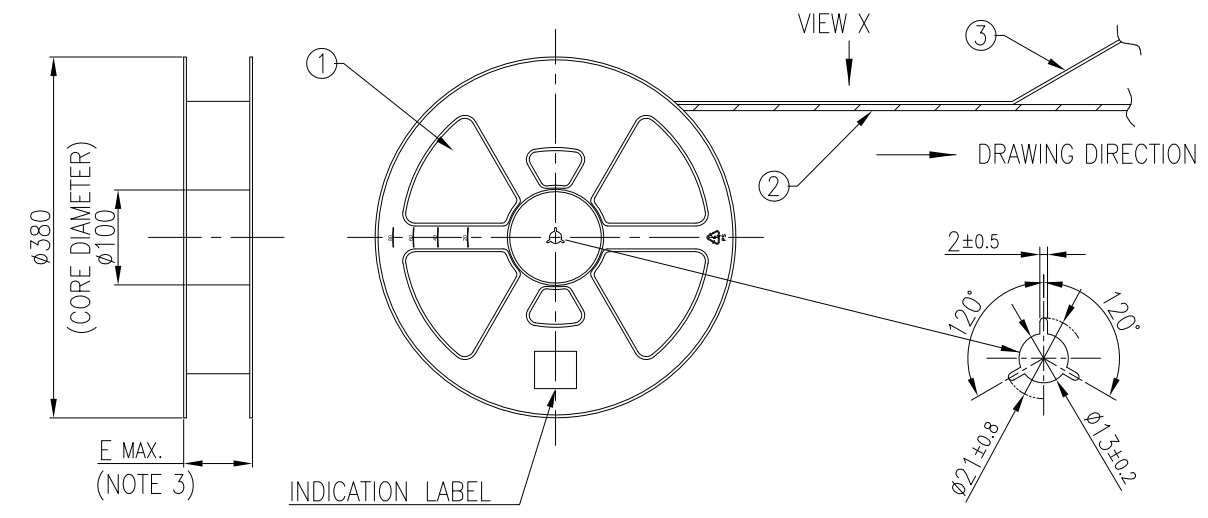
mat'l. code	surface	tolerance	projection	product family
SEE_TABLE	ISO 1302 ✓	ISO 406 ISO 1101		58EF
ltr	ecn no	dr	date	title
A				CONNECTOR USED FOR FPC/FFC WITH 0.5MM CONTACT SPACING (Cat. No. SFV__R-1ST__HLF)
				dwg no
				10171070
				sheet 2 of 6
				size
				A3
				type
				PRODUCT CUSTOMER DRAWING
sheet index	revision sheet			

PRODUCT NO.
SFV__R-2STE1HLF
SFV__R-2STAE1HLF
SFV__R-2STBE1HLF

CAT. NO. & DIMENSIONS

NO. OF CONT (n)	CAT. NO.	DIMENSIONS		
		△E	F	G
4	SFV4R-2ST_E1HLF	22.4	16	—
5	SFV5R-2ST_E1HLF	22.4	16	—
6	SFV6R-2ST_E1HLF	22.4	16	—
7	SFV7R-2ST_E1HLF	30.4	24	—
8	SFV8R-2ST_E1HLF	30.4	24	—
9	SFV9R-2ST_E1HLF	30.4	24	—
10	SFV10R-2ST_E1HLF	30.4	24	—
11	SFV11R-2ST_E1HLF	30.4	24	—
12	SFV12R-2ST_E1HLF	30.4	24	—
13	SFV13R-2ST_E1HLF	30.4	24	—
14	SFV14R-2ST_E1HLF	30.4	24	—
15	SFV15R-2ST_E1HLF	30.4	24	—
16	SFV16R-2ST_E1HLF	30.4	24	—
17	SFV17R-2ST_E1HLF	30.4	24	—
18	SFV18R-2ST_E1HLF	30.4	24	—
19	SFV19R-2ST_E1HLF	30.4	24	—
20	SFV20R-2ST_E1HLF	30.4	24	—
21	SFV21R-2ST_E1HLF	30.4	24	—
22	SFV22R-2ST_E1HLF	30.4	24	—
23	SFV23R-2ST_E1HLF	38.4	32	28.4
24	SFV24R-2ST_E1HLF	38.4	32	28.4
25	SFV25R-2ST_E1HLF	38.4	32	28.4
26	SFV26R-2ST_E1HLF	38.4	32	28.4
27	SFV27R-2ST_E1HLF	38.4	32	28.4
28	SFV28R-2ST_E1HLF	38.4	32	28.4
29	SFV29R-2ST_E1HLF	38.4	32	28.4
30	SFV30R-2ST_E1HLF	38.4	32	28.4
31	SFV31R-2ST_E1HLF	50.4	44	40.4
32	SFV32R-2ST_E1HLF	50.4	44	40.4
33	SFV33R-2ST_E1HLF	50.4	44	40.4
34	SFV34R-2ST_E1HLF	50.4	44	40.4
35	SFV35R-2ST_E1HLF	50.4	44	40.4

△ FOR E1 PACKAGING OPTION



MATERIAL TABLE

PT. NO.	PARTS NAME	CAT. NO.	MATERIAL	COLOR
1	REEL		△ POLYSTYRENE	△ BLACK
2	EMBOSS TAPE		PS	TRANSPARENT
3	COVER TAPE		POLYESTER,POLYETHYLENE	TRANSPARENT
4	CONNECTOR	SFV__R-2ST__HLF	SEE SHEET 4	

PACKAGING OPTION TABLE

PRODUCT NUMBER	PACKAGING OPTION	REEL MATERIAL	REEL DIAMETER	CONNECTOR QUANTITY
SFV__R-2STE1HLF	E1	△ PLASTIC	△ φ380	3000 / REEL
SFV__R-2STAE1HLF				
SFV__R-2STBE1HLF				

NOTES

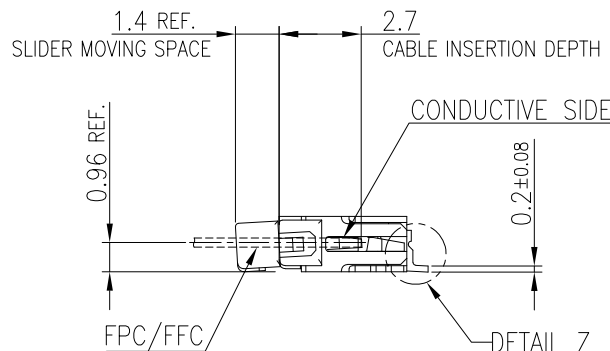
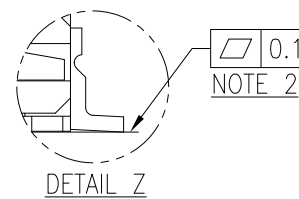
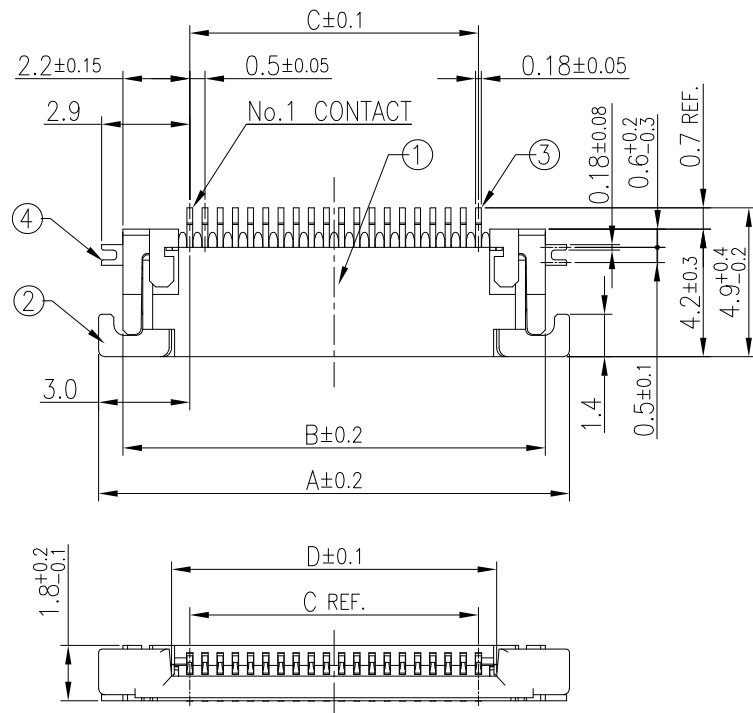
- THIS IS PLASTIC TAPE PACKAGED CONNECTOR DESIGNED TO TERMINATE FPC/FFC AND COPES WITH AUTOMATIC MOUNTING (SMT).
- SEE JIS C 0806 (PACKING OF ELECTRONIC COMPONENTS ON CONTINUOUS TAPES (SURFACE MOUNTING DEVICES)) FOR SHAPE AND DIMENSIONS OF PLASTIC (EMBOSS) TAPE AND REEL.
- E DIMENSION IS PORTION OF THE CORE.

mat'l. code SEE_TABLE		surface ISO 1302 ✓		tolerance ISO 406 ISO 1101		projection MM		product family 58EF	
ltr	ecn no	dr	date	tolerances unless otherwise specified		MM		title PLASTIC TAPE PACKAGED 0.5MM CONTACT SPACING CONNECTOR (Cat. No. SFV__R-2ST_E1HLF)	
A				angles	linear	MM		dwg no	
				0°±5'	0.X/±0.5	scale N/A		sheet 3 of 6	
				dr	S.WATANABE	2023-12-21		size A3	
				enr	S.WATANABE	2023-12-21		10171070	
				chr	AN.MOHAMMAD-NABEEL	2023-12-21		type PRODUCT CUSTOMER DRAWING	
				app	Y.KAMEDA	2023-12-21			
sheet index	revision sheet								

Amphenol FCI

© 2016 AFCI

PRODUCT NO.
SFV__R-2ST__HLF
SFV__R-2STA__HLF
SFV__R-2STB__HLF



CAT. NO. & DIMENSIONS

NO. OF CONT (n)	CAT. NO.	DIMENSIONS			
		A	B	C	D
4	SFV4R-2ST__HLF	7.5	5.9	1.5	2.7
5	SFV5R-2ST__HLF	8.0	6.4	2.0	3.2
6	SFV6R-2ST__HLF	8.5	6.9	2.5	3.7
7	SFV7R-2ST__HLF	9.0	7.4	3.0	4.2
8	SFV8R-2ST__HLF	9.5	7.9	3.5	4.7
9	SFV9R-2ST__HLF	10.0	8.4	4.0	5.2
10	SFV10R-2ST__HLF	10.5	8.9	4.5	5.7
11	SFV11R-2ST__HLF	11.0	9.4	5.0	6.2
12	SFV12R-2ST__HLF	11.5	9.9	5.5	6.7
13	SFV13R-2ST__HLF	12.0	10.4	6.0	7.2
14	SFV14R-2ST__HLF	12.5	10.9	6.5	7.7
15	SFV15R-2ST__HLF	13.0	11.4	7.0	8.2
16	SFV16R-2ST__HLF	13.5	11.9	7.5	8.7
17	SFV17R-2ST__HLF	14.0	12.4	8.0	9.2
18	SFV18R-2ST__HLF	14.5	12.9	8.5	9.7
19	SFV19R-2ST__HLF	15.0	13.4	9.0	10.2
20	SFV20R-2ST__HLF	15.5	13.9	9.5	10.7
21	SFV21R-2ST__HLF	16.0	14.4	10.0	11.2
22	SFV22R-2ST__HLF	16.5	14.9	10.5	11.7
23	SFV23R-2ST__HLF	17.0	15.4	11.0	12.2
24	SFV24R-2ST__HLF	17.5	15.9	11.5	12.7
25	SFV25R-2ST__HLF	18.0	16.4	12.0	13.2
26	SFV26R-2ST__HLF	18.5	16.9	12.5	13.7
27	SFV27R-2ST__HLF	19.0	17.4	13.0	14.2
28	SFV28R-2ST__HLF	19.5	17.9	13.5	14.7
29	SFV29R-2ST__HLF	20.0	18.4	14.0	15.2
30	SFV30R-2ST__HLF	20.5	18.9	14.5	15.7
31	SFV31R-2ST__HLF	21.0	19.4	15.0	16.2
32	SFV32R-2ST__HLF	21.5	19.9	15.5	16.7
33	SFV33R-2ST__HLF	22.0	20.4	16.0	17.2
34	SFV34R-2ST__HLF	22.5	20.9	16.5	17.7
35	SFV35R-2ST__HLF	23.0	21.4	17.0	18.2

MATERIAL TABLE

PT. NO.	PARTS NAME	MATERIAL	Q'TY	NOTE
1	HOUSING	13~35pin : LCP RESIN GLASS REINFORCED (UL94V-0)	1	COLOR : BLACK (HALOGEN FREE)
		4~12pin : POLYAMIDE RESIN GLASS REINFORCED (UL94V-0)		
2	SLIDER	PPS RESIN GLASS REINFORCED (UL94V-0)	1	COLOR : BLACK (HALOGEN FREE)
3	CONTACT	PHOSPHOR BRONZE	n	PLATING : SEE PLATING OPTION (LEAD FREE)
4	MOUNTING PLATE		2	PLATING : MATTE TIN 1.5um min (LEAD FREE) NICKEL UNDER PLATING 1.27um min.

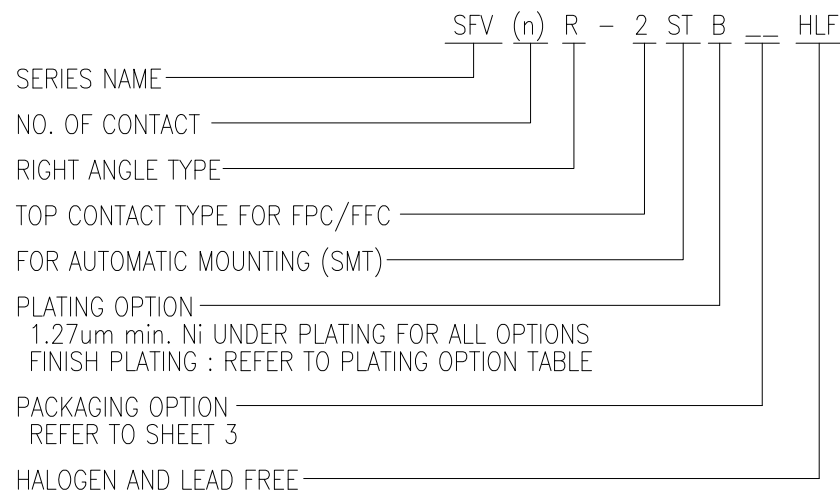
n : NO. OF CONTACTS

NOTES

- THIS PRODUCT IS THE TOP CONTACT TYPE CONNECTOR DESIGNED TO TERMINATE FPC/FFC AND COPES WITH AUTOMATIC MOUNTING (SMT).
- FLATNESS OF CONTACT TERMINAL AND MOUNTING PLATE TO HOUSING MUST BE WITHIN TOLERANCE IN Z PORTION DETAILED DRAWING.
- THIS PRODUCT MEETS EUROPEAN UNION DIRECTIVES AND OTHER COUNTRY REGULATIONS AS DESCRIBED IN GS47-0004.
- THE HOUSING WILL WITHSTAND EXPOSURE TO 260°C PEAK TEMPERATURE FOR 10 SECONDS IN A REFLOW SOLDERING OVEN.
- APPLICATION SPEC : BJM-SFV101. PRODUCT SPEC : REFER TO PLATING OPTION TABLE.
- CATALOG NUMBER STRUCTURE IS AS FOLLOWINGS.

PLATING OPTION TABLE

PRODUCT NUMBER	PLATING OPTION	CONTACT PLATING	TERMINAL PLATING	PRODUCT SPEC
SFV__R-2ST__HLF	BRANK	MATTE THIN TIN PLATING	MATTE TIN : 1um min.	GS-12-645
SFV__R-2STA__HLF	A	GOLD : 0.05um min.	MATTE TIN : 1.5um min.	SC-SFV08
SFV__R-2STB__HLF	B	GOLD : 0.05um min. WITH Ni DAM	GOLD : 0.05um min.	SC-SFV08

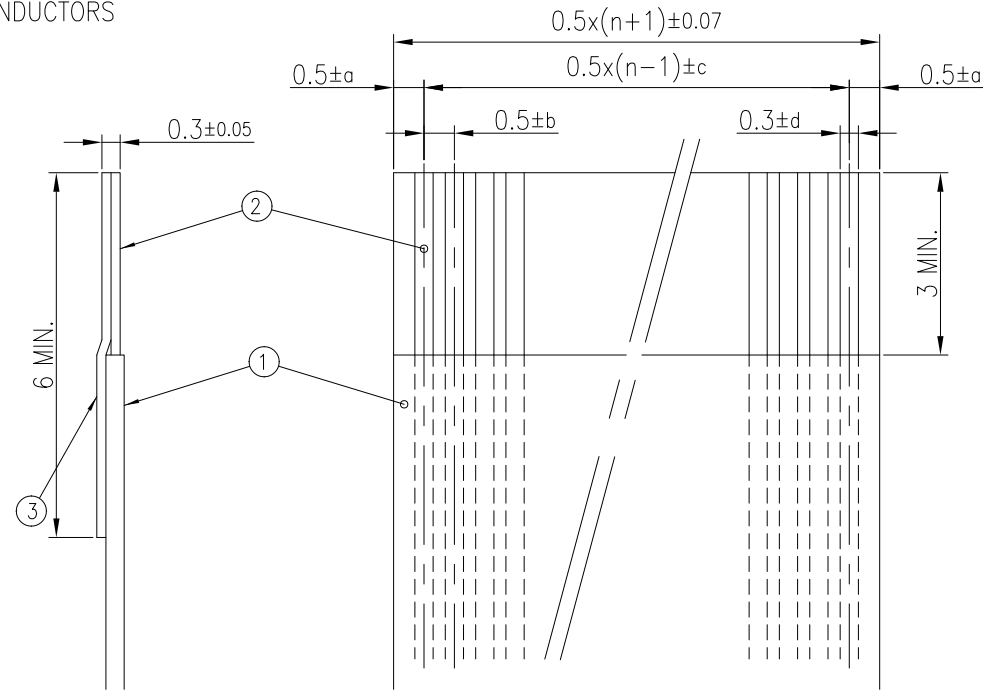


mat'l. code		surface		tolerance		projection		product family	
SEE_TABLE		ISO 1302 <input checked="" type="checkbox"/>		ISO 406 ISO 1101				58EF	
ltr	ecn no	dr	date	tolerances unless otherwise specified		MM		title	
A				angles linear				CONNECTOR USED FOR FPC/FFC WITH 0.5MM CONTACT SPACING (Cat. No. SFV__R-2ST__HLF)	
				0°±2'		scale 4:1		dwg no	
				dr	S.WATANABE	2023-12-21	sheet 4 of 6		size
				enr	S.WATANABE	2023-12-21	10171070		A3
				chr	AN.MOHHAMAD-NABEEL	2023-12-21	type		PRODUCT CUSTOMER DRAWING
				appd	Y.KAMEDA	2023-12-21			
sheet index	revision sheet								

RECOMMENDED CABLE (FFC)

(NOTE1, NOTE2)

n : NO. OF CONDUCTORS



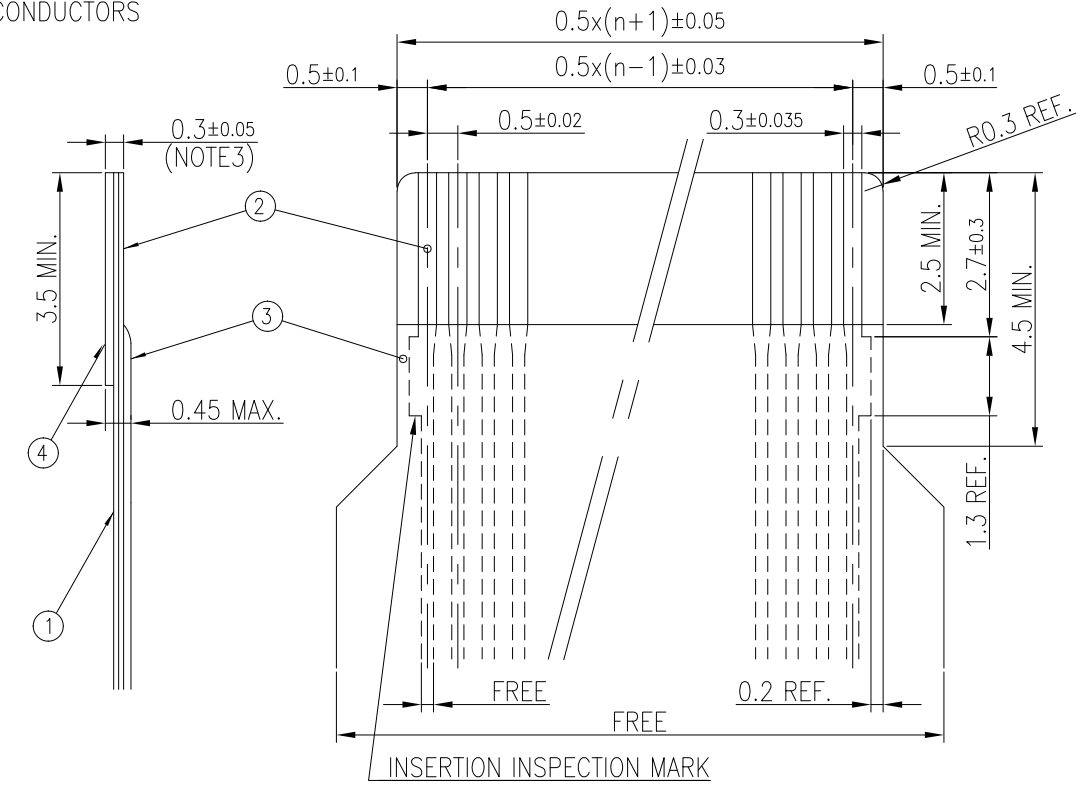
(NOTE4)	a	b	c	d
1	±0.07	±0.04	±0.05	±0.02
2	±0.1	±0.03	±0.03	±0.025

PT. NO.	DESCRIPTION	MATERIAL
1	INSULATOR	FLAME RESISTING POLYESTER OR EQUIVALENT
2	CONDUCTOR	COPPER FOIL (PLATING : TIN OR GOLD) (NOTE5)
3	SUPPORTING TAPE	FLAME RESISTING POLYESTER OR EQUIVALENT

RECOMMENDED CABLE (FPC)

(NOTE1, NOTE2)

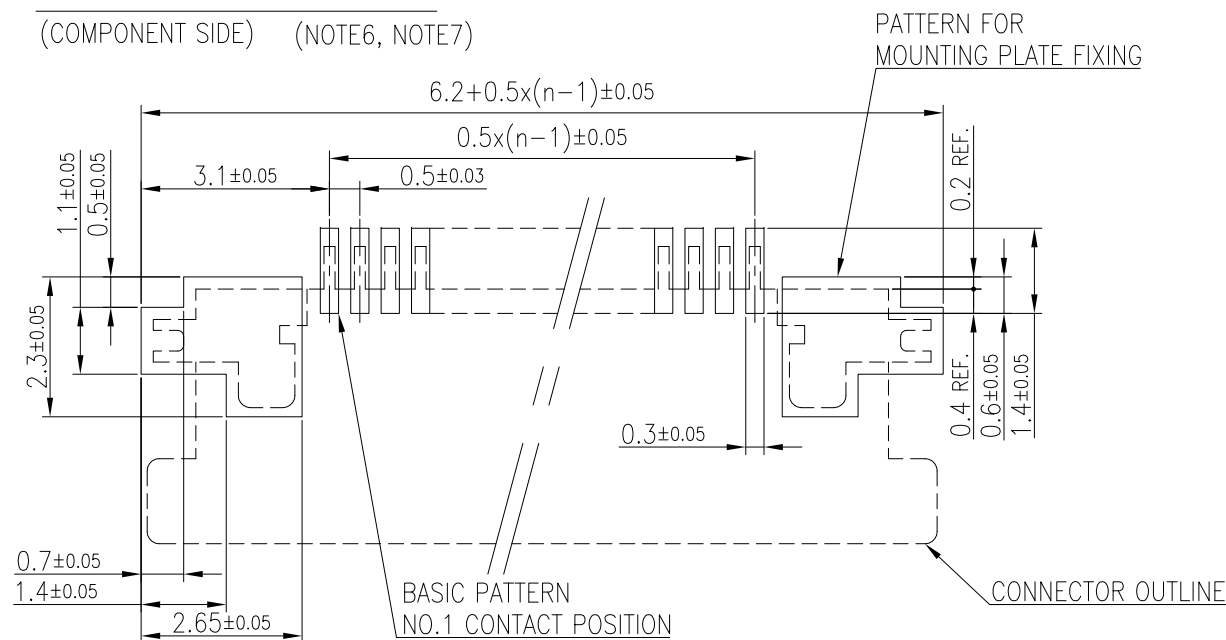
n : NO. OF CONDUCTORS



PT. NO.	DESCRIPTION	MATERIAL	THICKNESS (um)
1	BASE FILM	POLYIMIDE OR POLYESTER OR EQUIVALENT	25
2	CONDUCTOR	COPPER FOIL (PLATING : TIN OR GOLD) (NOTE5)	35
3	OVERLAY	POLYIMIDE OR POLYESTER OR EQUIVALENT	—
4	SUPPORTING TAPE	POLYESTER OR POLYIMIDE OR EQUIVALENT	188

RECOMMENDED PC BOARD LAYOUT

(COMPONENT SIDE) (NOTE6, NOTE7)




NOTES

1. NO BURR AT EACH PORTION.
2. NO PEELING IN COMMON USE.
3. TOTAL THICKNESS LIMIT OF EACH MATERIAL (INCLUDING ADHESIVE AGENT) IS SPECIFIED.
4. BOTH COMBINATIONS ARE ALLOWED.
5. FINISH PLATING OF CABLE CONDUCTOR AND CONTACT SHOULD BE MATCHED.
6. RECOMMENDED STENCIL THICKNESS IS 120~150um.
7. RECOMMENDED STENCIL OPENING RATIO IS 100%.


mat'l. code		surface		tolerance		projection		product family	
SEE_TABLE		ISO 1302 ✓		ISO 406 ISO 1101				58EF	
ltr		ecn no		dr		date		title	
A								RECOMMENDED CABLE AND PCB (Cat. No. SFV__R-1/2ST_E1HLF)	
		angles		linear				dwg no	
		0°±2'		0.X/±0.3 0.XX/±0.3 0.XXX/±0.3		scale 8:1		sheet 5 of 6	
		dr		S.WATANABE		2023-12-21		size	
		enrg		S.WATANABE		2023-12-21		A3	
		chr		AN.MOHHAMAD-NABEEL		2023-12-21		10171070	
		appd		Y.KAMEDA		2023-12-21		type	
								PRODUCT CUSTOMER DRAWING	
sheet index		revision sheet							

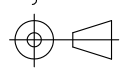

SFV_R SERIES PREFERRED PART NUMBERS

BOTTOM CONTACT / GOLD PLATING

	NO. OF CONT (n)	CAT. NO.
●	4	SFV4R-1STBE1HLF
●	5	SFV5R-1STBE1HLF
●	6	SFV6R-1STBE1HLF
●	7	SFV7R-1STBE1HLF
●	8	SFV8R-1STBE1HLF
	9	SFV9R-1STBE1HLF
●	10	SFV10R-1STBE1HLF
	11	SFV11R-1STBE1HLF
●	12	SFV12R-1STBE1HLF
	13	SFV13R-1STBE1HLF
●	14	SFV14R-1STBE1HLF
●	15	SFV15R-1STBE1HLF
●	16	SFV16R-1STBE1HLF
	17	SFV17R-1STBE1HLF
●	18	SFV18R-1STBE1HLF
	19	SFV19R-1STBE1HLF
●	20	SFV20R-1STBE1HLF
	21	SFV21R-1STBE1HLF
●	22	SFV22R-1STBE1HLF
●	23	SFV23R-1STBE1HLF
●	24	SFV24R-1STBE1HLF
	25	SFV25R-1STBE1HLF
●	26	SFV26R-1STBE1HLF
●	27	SFV27R-1STBE1HLF
●	28	SFV28R-1STBE1HLF
	29	SFV29R-1STBE1HLF
●	30	SFV30R-1STBE1HLF
●	31	SFV31R-1STBE1HLF
●	32	SFV32R-1STBE1HLF
●	33	SFV33R-1STBE1HLF
	34	SFV34R-1STBE1HLF
●	35	SFV35R-1STBE1HLF

TOP CONTACT / GOLD PLATING

	NO. OF CONT (n)	CAT. NO.
●	4	SFV4R-2STBE1HLF
●	5	SFV5R-2STBE1HLF
●	6	SFV6R-2STBE1HLF
●	7	SFV7R-2STBE1HLF
●	8	SFV8R-2STBE1HLF
●	9	SFV9R-2STBE1HLF
●	10	SFV10R-2STBE1HLF
	11	SFV11R-2STBE1HLF
●	12	SFV12R-2STBE1HLF
	13	SFV13R-2STBE1HLF
●	14	SFV14R-2STBE1HLF
●	15	SFV15R-2STBE1HLF
●	16	SFV16R-2STBE1HLF
●	17	SFV17R-2STBE1HLF
●	18	SFV18R-2STBE1HLF
	19	SFV19R-2STBE1HLF
●	20	SFV20R-2STBE1HLF
●	21	SFV21R-2STBE1HLF
●	22	SFV22R-2STBE1HLF
●	23	SFV23R-2STBE1HLF
●	24	SFV24R-2STBE1HLF
●	25	SFV25R-2STBE1HLF
●	26	SFV26R-2STBE1HLF
	27	SFV27R-2STBE1HLF
	28	SFV28R-2STBE1HLF
	29	SFV29R-2STBE1HLF
●	30	SFV30R-2STBE1HLF
●	31	SFV31R-2STBE1HLF
●	32	SFV32R-2STBE1HLF
●	33	SFV33R-2STBE1HLF
	34	SFV34R-2STBE1HLF
●	35	SFV35R-2STBE1HLF

mat'l. code SEE_TABLE		surface ISO 1302 <input checked="" type="checkbox"/>		tolerance ISO 406 ISO 1101		projection 		product family 58EF		
ltr	ecn no	dr	date	tolerances unless otherwise specified		MM		title PREFERRED PART NUMBERS (Cat. No. SFV__R-1/2ST_E1HLF)		
A				angles	linear	scale N/A		dwg no 10171070		
				dr	S.WATANABE	2023-12-21			sheet 6 of 6	
				enr	S.WATANABE	2023-12-21			A3	
				chr	AN.MOHAMMAD-NABEEL	2023-12-21			type	PRODUCT CUSTOMER DRAWING
				appd	Y.KAMEDA	2023-12-21				
sheet index	revision sheet									