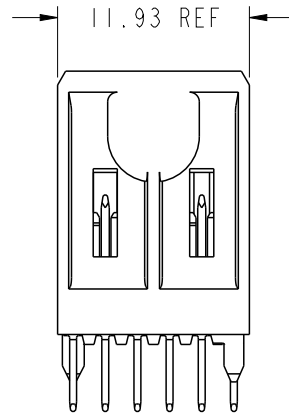
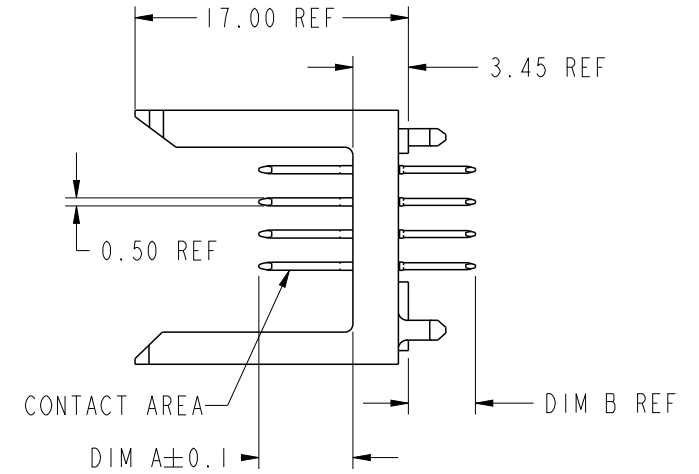
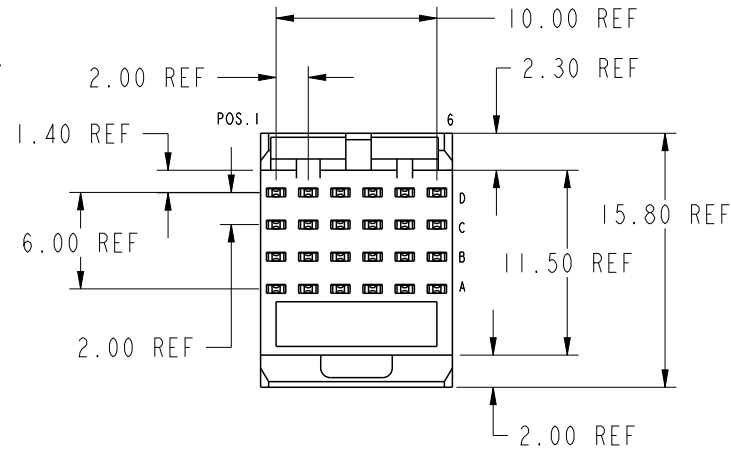


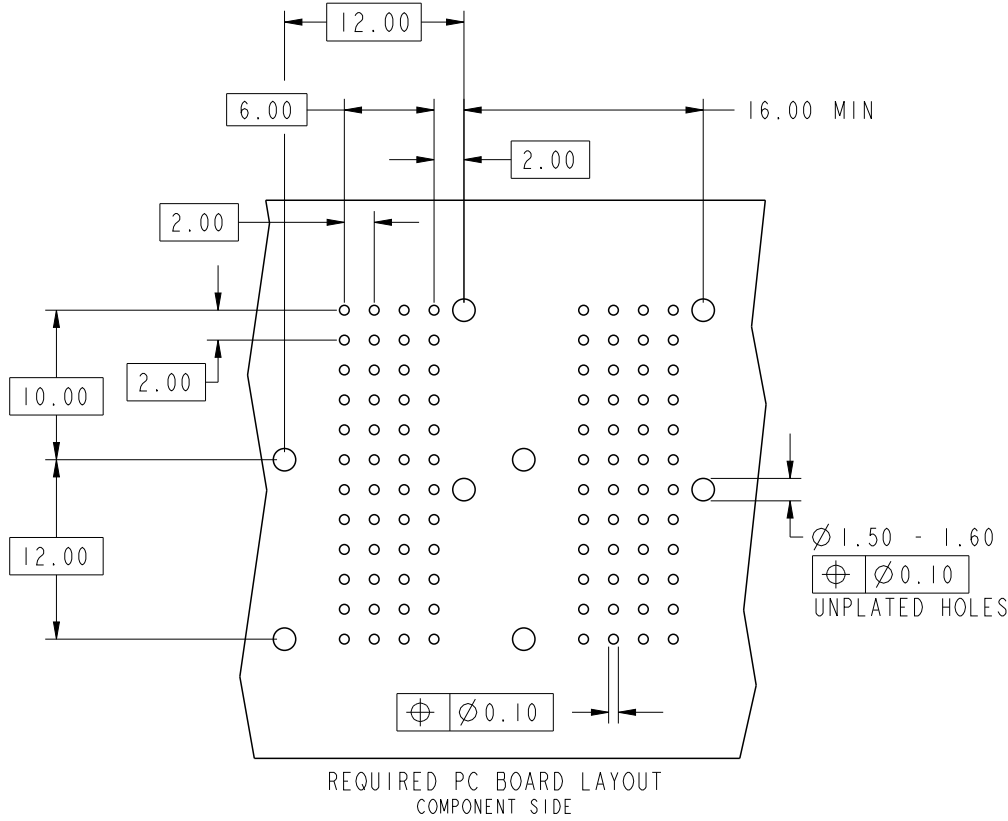
PRODUCT NUMBER
88951-XYX(L)LF

L REFER LUBRICATED (OPTIONAL) \triangle
SEE NOTE 3

X REFER PLATING PERFORMANCE \triangle
SEE NOTE 3



spec ref		dr Terran Huang		2010/07/09		projection 	MM 	size	A4	scale	21:10					
tolerance std		eng Rahul Mohan-M		2021/07/13				ecn no	ELX-I-41567-1							
ISO 406 ISO 1101		chr -		-				product family	XXXXX							
surface 3.2		appr Kuriakose, San		2021/08/17		rel level	Released									
ISO 1302		linear	0.X	±0.3	Amphenol FCi		METRAL SIGNAL HEADER		dwg no		88951					
			0.XX	±0.13									rev		AA	
			0.XXX	±0.050												
		angular	0°	±2°	amphenol-icc.com		cat. no.		-		Product - Customer Drw					
										sheet 1 of 5						



KEY		
CODE	DIMENSIONS	
	DIM "A" MATE	DIM "B" TAIL
1	5.00	4.25
2	5.75	4.25
3	6.50	4.25
4	7.25	4.25
5	5.00	3.30
6	5.75	3.30
7	6.50	3.30
8	7.25	3.30
9	5.00	2.65
10	5.75	2.65
11	6.50	2.65
12	7.25	2.65
13	8.00	4.25

REQUIRED PC BOARD LAYOUT
COMPONENT SIDE

SEE PRINT 58351 FOR
ADDITIONAL PCB INFORMATION

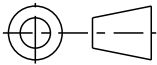

spec ref		dr	Terran Huang	2010/07/09	projection 	MM 	size	A4	scale	21:10	
tolerance std		eng	Rahul Mohan-M	2021/07/13			ecn no	ELX-I-41567-1			
ISO 406 ISO 1101		chr	-	-				rel level	Released		
surface 3.2		appr	Kuriakose, San	2021/08/17	product family		XXXXX				
ISO 1302		TOLERANCES UNLESS OTHERWISE SPECIFIED		Amphenol FCi		title		METRAL SIGNAL HEADER		rev	AA
linear		0.X ±0.3		1 MOD. 4 ROW STB		dwg no		88951		sheet 2 of 5	
angular		0° ±2°		cat. no.		-		Product - Customer Drw		-	

Amphenol FCI

METRAL P/N	ROW	CONTACT CODE MOD.	1	2	3	4	5	6
88951-X01LF	D	1	1	1	1	1	1	1
	C	1	1	1	1	1	1	1
	B	1	1	1	1	1	1	1
	A	1	1	1	1	1	1	1
88951-X06LF	D	2	2	2	2	2	2	2
	C	2	2	2	2	2	2	2
	B	2	2	2	2	2	2	2
	A	2	2	2	2	2	2	2
88951-X11LF	D	3	3	3	3	3	3	3
	C	1	1	1	1	1	1	1
	B	3	3	3	3	3	3	3
	A	3	3	3	3	3	3	3
88951-X17LF	D	2	2	2	2	2	2	2
	C	2	2	2	2	2	2	2
	B	2	2	2	2	2	2	2
	A	3	3	3	3	3	3	3
88951-X35LF	D	7	7	7	7	7	7	7
	C	7	7	7	7	7	7	7
	B	7	7	7	7	7	7	7
	A	7	7	7	7	7	7	7
88951-X40LF	D	5	5	5	5	5	5	5
	C	6	6	6	6	6	6	6
	B	7	7	7	7	7	7	7
	A	8	8	8	8	8	8	8
88951-X02LF	D	1	1	1	1	1	1	1
	C	1	1	1	1	1	1	1
	B	1	1	1	1	1	1	1
	A	3	3	3	3	3	3	3
88951-X07LF	D	3	3	3	3	3	3	3
	C	2	2	2	2	2	2	2
	B	2	2	2	2	2	2	2
	A	1	1	1	1	1	1	1
88951-X12LF	D	4	4	4	4	4	4	4
	C	3	3	3	3	3	3	3
	B	2	2	2	2	2	2	2
	A	1	1	1	1	1	1	1
88951-X31LF	D	5	5	5	5	5	5	5
	C	5	5	5	5	5	5	5
	B	5	5	5	5	5	5	5
	A	5	5	5	5	5	5	5
88951-X36LF	D	6	6	6	6	6	6	6
	C	6	6	6	6	6	6	6
	B	6	6	6	6	6	6	6
	A	6	6	6	6	6	6	6
88951-X41LF	D	7	7	7	7	7	7	7
	C	5	5	5	5	5	5	5
	B	7	7	7	7	7	7	7
	A	7	7	7	7	7	7	7
88951-X03LF	D	3	3	3	3	3	3	3
	C	2	2	2	2	2	2	2
	B	2	2	2	2	2	2	2
	A	3	3	3	3	3	3	3
88951-X08LF	D	3	3	3	3	3	3	3
	C	1	1	1	1	1	1	1
	B	1	1	1	1	1	1	1
	A	1	1	1	1	1	1	1
88951-X13LF	D	1	1	1	1	1	1	1
	C	1	1	1	1	1	1	1
	B	3	3	3	3	3	3	3
	A	1	1	1	1	1	1	1
88951-X32LF	D	5	5	5	5	5	5	5
	C	5	5	5	5	5	5	5
	B	5	5	5	5	5	5	5
	A	7	7	7	7	7	7	7
88951-X37LF	D	7	7	7	7	7	7	7
	C	6	6	6	6	6	6	6
	B	6	6	6	6	6	6	6
	A	5	5	5	5	5	5	5
88951-X42LF	D	8	8	8	8	8	8	8
	C	7	7	7	7	7	7	7
	B	6	6	6	6	6	6	6
	A	5	5	5	5	5	5	5
88951-X04LF	D	4	4	4	4	4	4	4
	C	3	3	3	3	3	3	3
	B	3	3	3	3	3	3	3
	A	4	4	4	4	4	4	4
88951-X09LF	D	4	4	4	4	4	4	4
	C	4	4	4	4	4	4	4
	B	4	4	4	4	4	4	4
	A	4	4	4	4	4	4	4
88951-X15LF	D	2	2	2	2	2	2	2
	C	1	1	1	1	1	1	1
	B	2	2	2	2	2	2	2
	A	1	1	1	1	1	1	1
88951-X33LF	D	7	7	7	7	7	7	7
	C	6	6	6	6	6	6	6
	B	6	6	6	6	6	6	6
	A	7	7	7	7	7	7	7
88951-X38LF	D	7	7	7	7	7	7	7
	C	5	5	5	5	5	5	5
	B	5	5	5	5	5	5	5
	A	5	5	5	5	5	5	5
88951-X43LF	D	5	5	5	5	5	5	5
	C	5	5	5	5	5	5	5
	B	7	7	7	7	7	7	7
	A	5	5	5	5	5	5	5
88951-X05LF	D	3	3	3	3	3	3	3
	C	3	3	3	3	3	3	3
	B	3	3	3	3	3	3	3
	A	3	3	3	3	3	3	3
88951-X10LF	D	1	1	1	1	1	1	1
	C	2	2	2	2	2	2	2
	B	3	3	3	3	3	3	3
	A	4	4	4	4	4	4	4
88951-X16LF	D	2	2	2	2	2	2	2
	C	3	3	3	3	3	3	3
	B	4	4	4	4	4	4	4
	A	3	3	3	3	3	3	3
88951-X34LF	D	8	8	8	8	8	8	8
	C	7	7	7	7	7	7	7
	B	7	7	7	7	7	7	7
	A	8	8	8	8	8	8	8
88951-X39LF	D	8	8	8	8	8	8	8
	C	8	8	8	8	8	8	8
	B	8	8	8	8	8	8	8
	A	8	8	8	8	8	8	8
88951-X45LF	D	6	6	6	6	6	6	6
	C	5	5	5	5	5	5	5
	B	6	6	6	6	6	6	6
	A	5	5	5	5	5	5	5

spec ref	dr	Terran Huang	2010/07/09	projection		size	A4	scale	2:10	
tolerance std ISO 406 ISO 1101	eng	Rahul Mohan-M	2021/07/13	product family		XXXXX	ecn no	ELX-I-41567-1	rel level	Released
		chr	-							
surface 3.2	appr	Kuriakose, San	2021/08/17							
ISO 1302	TOLERANCES UNLESS OTHERWISE SPECIFIED linear	0.X	±0.3	Amphenol FCI METRAL SIGNAL HEADER 1 MOD. 4 ROW STB	dwg no 88951	rev AA	sheet 3 of 5			
ISO 1302		0.XX	±0.13							
ISO 1302	0.XXX	±0.050								
ISO 1302	angular	0°	±2°	cat. no.	-	Product - Customer Draw	sheet 3 of 5			

88951-X46LF	ROW	1	2	3	4	5	6	88951-X64LF	ROW	1	2	3	4	5	6	88951-X69LF	ROW	1	2	3	4	5	6	88951-X75LF	ROW	1	2	3	4	5	6	88951-X80LF	ROW	1	2	3	4	5	6	88951-X85LF	ROW	1	2	3	4	5	6
	D	6	6	6	6	6	6		D	12	12	12	12	12	12		D	12	12	12	12	12	12		D	10	10	10	10	10	10		D	3	3	3	3	3	3		D	11	11	11	11	11	11
	C	7	7	7	7	7	7		C	11	11	11	11	11	11		C	12	12	12	12	12	12		C	9	9	9	9	9	9		C	3	3	3	3	3	3		C	11	11	11	11	11	11
	B	8	8	8	8	8	8		B	11	11	11	11	11	11		B	12	12	12	12	12	12		B	10	10	10	10	10	10		B	13	13	13	13	13	13		B	11	11	11	11	11	11
A	7	7	7	7	7	7	A	12	12	12	12	12	12	A	12	12	12	12	12	12	A	9	9	9	9	9	9	A	3	3	3	3	3	3	A	11	11	11	11	11	11						

spec ref	dr	Terran Huang	2010/07/09			size	A4	scale	21:10
tolerance std	eng	Rahul Mohan-M	2021/07/13			ecn no	ELX-I-41567-1		
ISO 406 ISO 1101	chr	-	-			rel level	Released		
surface 3.2	appr	Kuriakose, San	2021/08/17			product family	XXXXX		
ISO 1302	Amphenol FCI amphenol-icc.com		METRAL SIGNAL HEADER 1 MOD. 4 ROW STB		rev 88951 AA	surface 3.2 linear 0.X ±0.3 0.XX ±0.13 0.XXX ±0.050 angular 0° ±2°	sheet 4 of 5		

NOTES.

1. FOR DIM A AND B SEE SHEET 2 AND UP.
2. MATERIAL : BODY : THERMOPLASTIC UL94-V0.
: CONTACT : COPPER ALLOY.
3. FOR PLATING PERFORMANCE REFER DRAWING # 10159408.
4. ALL PRODUCTS WITH PART NUMBERS SHOWN IN SUBSEQUENT TABLES WILL BE PACKED IN TUBES.
IF TRAY PACKAGING IS REQUIRED, A SUFFIX "P" WILL BE ADDED TO THE END OF THE PART NUMBER
EXAMPLE: XXXXX-XXXPLF.
5. PRODUCT SPECIFICATION : GS-12-180.
6. APPLICATION SPECIFICATION : BUS-20-074.
7. THE PRODUCTS MEETS THE EUROPEAN UNION DIRECTIVES AND OTHER COUNTRY REGULATIONS AS
DESCRIBED IN GS-47-0004.
8. ALL PRODUCTS WILL WITHSTAND EXPOSURE TO 260°C FOR 60 SECONDS IN A CONVENTION, INFRA-RED
OR VAPOUR PHASE REFLOW OVEN. THE Au CONTACT SURFACE OF THE CONTACTS SHALL BE EXPOSED
TO A MAXIMUM 140°C FOR NO LONGER THAN 15 SECONDS IN A WAVE SOLDER APPLICATION.
9. A \triangle SYMBOL WILL BE NEXT TO ANY DIMENSION , VIEW, OR NOTE WHICH HAS BEEN MODIFIED WITH
THE CURRENT DRAWING REVISION.

Amphenol
FCi

© 2020 Amphenol Corporation

spec ref		dr	Terran Huang	2010/07/09	projection 	MM 	size	A4	scale	21:10	
tolerance std ISO 406 ISO 1101	TOLERANCES UNLESS OTHERWISE SPECIFIED		eng	Rahul Mohan-M			2021/07/13	ecn no	ELX-I-41567-1		
			chr	-			-	rel level	Released		
surface 3.2 ISO 1302	linear	0.X	±0.3	appr	Kuriakose, San	2021/08/17	product family	XXXXX	rev		
		0.XX	±0.13	Amphenol FCi		title		METRAL SIGNAL HEADER		dwg no	88951
		0.XXX	±0.050								
	angular	0°	±2°	amphenol-icc.com						AA	