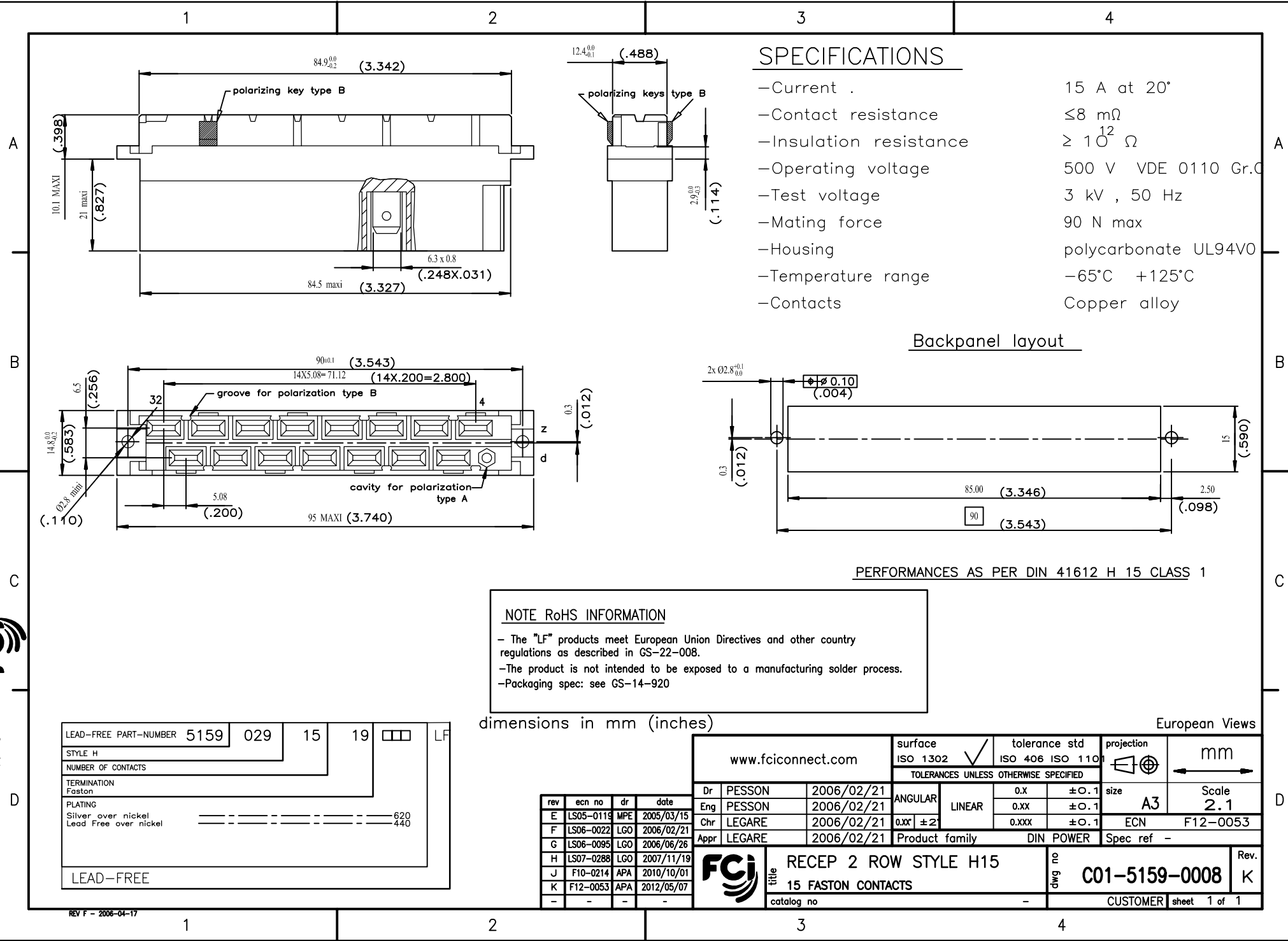


Copyright FCI.

F12014146 (EN) Rev F (11-08) (13) 42900000



SPECIFICATIONS

- Current . 15 A at 20°
- Contact resistance ≤8 mΩ
- Insulation resistance ≥ 10¹² Ω
- Operating voltage 500 V VDE 0110 Gr.C
- Test voltage 3 kV , 50 Hz
- Mating force 90 N max
- Housing polycarbonate UL94V0
- Temperature range -65°C +125°C
- Contacts Copper alloy

Backpanel layout

PERFORMANCES AS PER DIN 41612 H 15 CLASS 1

NOTE RoHS INFORMATION

- The "LF" products meet European Union Directives and other country regulations as described in GS-22-008.
- The product is not intended to be exposed to a manufacturing solder process.
- Packaging spec: see GS-14-920

dimensions in mm (inches)

European Views

LEAD-FREE PART-NUMBER	5159	029	15	19	LF
STYLE	H				
NUMBER OF CONTACTS	15				
TERMINATION	Faston				
PLATING	Silver over nickel				
	Lead Free over nickel				
	620				
	440				
LEAD-FREE					

rev	ecn no	dr	date
E	LS05-0119	MPE	2005/03/15
F	LS06-0022	LGO	2006/02/21
G	LS06-0095	LGO	2006/06/26
H	LS07-0288	LGO	2007/11/19
J	F10-0214	APA	2010/10/01
K	F12-0053	APA	2012/05/07
-	-	-	-

www.fciconnect.com		surface ISO 1302 ✓	tolerance std ISO 406 ISO 110	projection mm
		TOLERANCES UNLESS OTHERWISE SPECIFIED		
Dr	PESSON	2006/02/21	ANGULAR	LINEAR
Eng	PESSON	2006/02/21	0.X	±0.1
Chr	LEGARE	2006/02/21	0.XX	±0.1
Appr	LEGARE	2006/02/21	0.XXX	±0.1
Product family		DIN POWER		Spec ref -
title RECEP 2 ROW STYLE H15			dwg no C01-5159-0008	Rev. K
catalog no			CUSTOMER	sheet 1 of 1

REV F - 2006-04-17