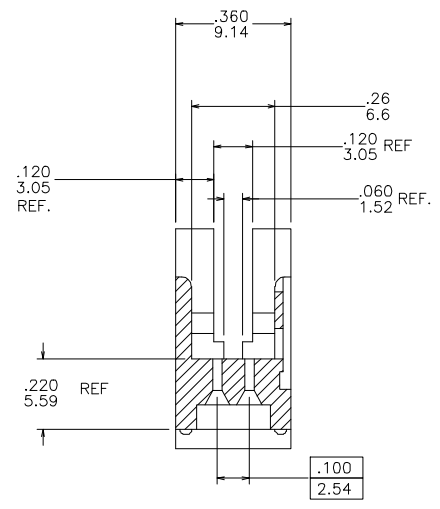
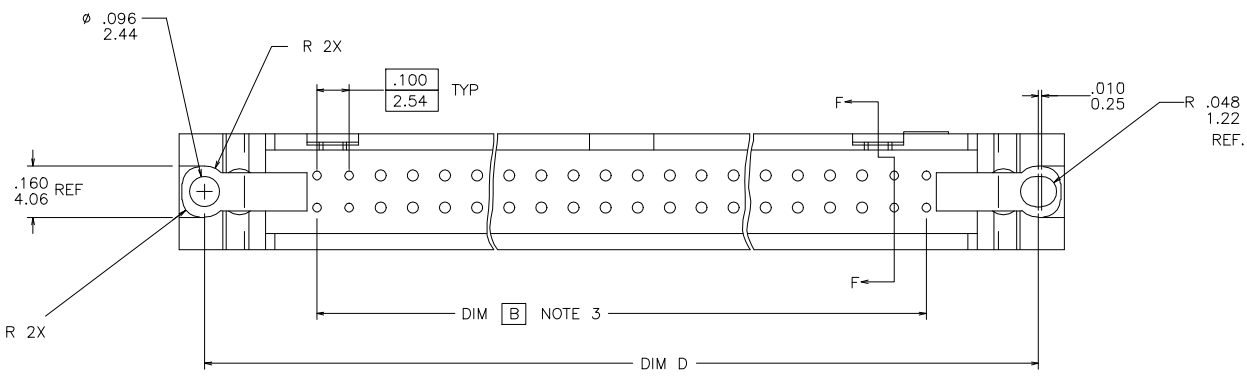
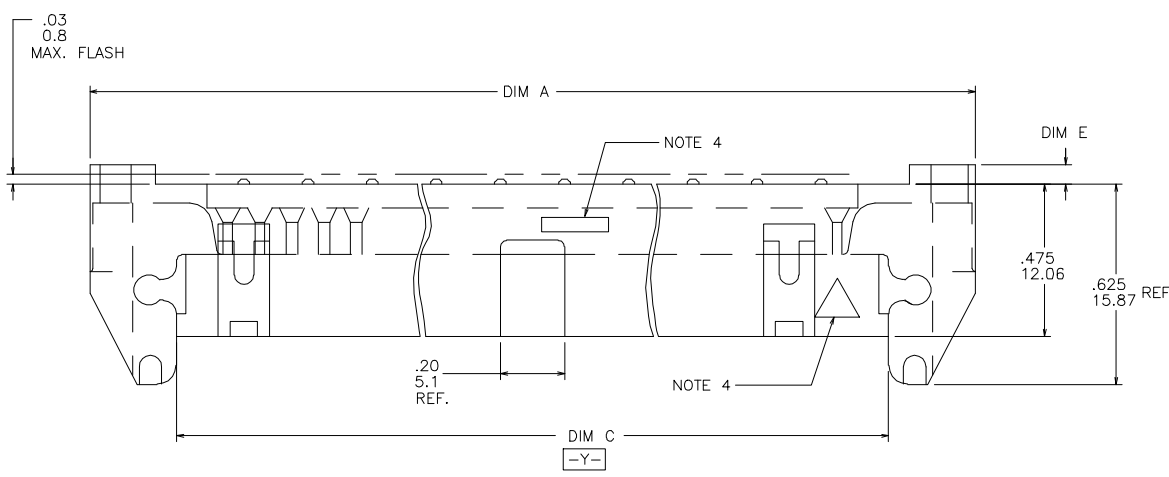


AFCI CONFIDENTIAL

Amphenol
FCI

This document is the property of and embodies CONFIDENTIAL and PROPRIETARY information of AFCI. No part of the information shown on this document may be used in any way or disclosed to others without the written consent of AFCI.

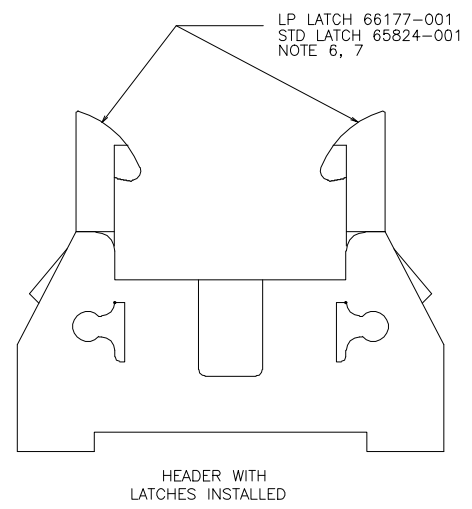
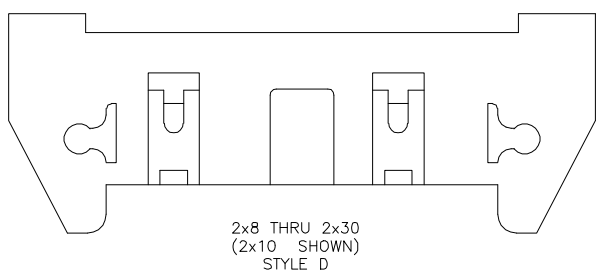
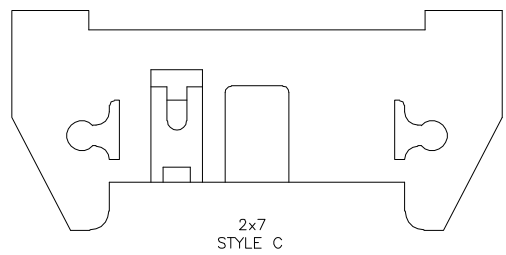
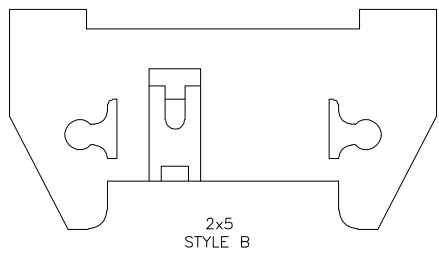
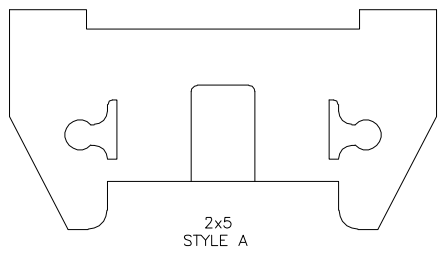


mat'l. code				surface ISO 1302 ✓		tolerance ISO 406 ISO 1101		projection MM		product family QUICKIE	
ltr	ecn no	dr	date	tolerances unless otherwise specified		.X±0.3		MM		title	
R	V91401	LSS	07/26/99	angles	linear	.XX±0.13		←→		QUICKIE SEAHORSE HEADER VERTICAL	
S	M06-0282	AGS	07/22/06	0±2'		.XXX±0.051		scale 1:1		dwg no	
T	M06-0411	MHT	10/17/06							sheet 1 of 5	
U	M07-0333	AGS	07/18/07	dr	M.CORNMAN	11/26/91				size	
V	M08-0279	MHT	09/30/08	enr	M. SMYK	11/26/91				A3	
W	ELX-N-41277	MKX	06/21/21	chr	M. SMYK	11/26/91				66373	
				appd	M. SMYK	11/26/91				type Product Customer Drawing	
sheet index	revision	W									
	sheet	1-5									

AFCI CONFIDENTIAL

Amphenol
FCI

This document is the property of and embodies CONFIDENTIAL and PROPRIETARY information of AFCI. No part of the information shown on this document may be used in any way or disclosed to others without the written consent of AFCI.



NOTES:

- ① MOLDING MATERIAL: 30% GLASS FILLED POLYESTER, FRAME RETARDANT PER UL94-V0, COLOR: BLUE.
OR
HIGH TEMPERATURE THERMAL PLASTIC, COLOR: BLACK
2. 1" MAX DRAFT PERMISSIBLE ON ALL SURFACES UNLESS OTHERWISE SPECIFIED.
- ③ B BASIC DIM SHALL BE LOCATED SYMMETRICAL TO DATUM -Y-.
- ④ TRIANGLE, AND DUPONT LOGO LOCATION TO BE OPTIONAL.
5. RECOMMENDED MOUNTING SCREW SIZE: #2-56 FILLISTER HEAD MACHINE SCREW, 1/4" LONG FOR 1/16" AND 3/32" BOARD, 5/16" LONG FOR 1/8" BOARD.
- ⑥ LP LATCHES TO BE USED WITH FEMALE CONNECTOR WITHOUT STRAIN RELIEF, STANDARD LATCHES TO BE USED WITH FEMALE CONNECTOR WITH STRAIN RELIEF.
- ⑦ HIGH TEMPERATURE MOLDING MAT'L :
30% GLASS FILLED PCT - COLOR - BLACK
ADD AN "H" AT THE END OF THE P/N. THE FOLLOWING LATCHES WILL BE SUBSTITUTED WHEN THE "H" APPEARS AT THE END OF THE P/N.
65824-007 (STANDARD - HT BLACK)
66177-004 (LOW PROFILE - HT BLACK)
- ⑧ ADD "LF" SUFFIX AT THE END OF PART NUMBER FOR LEAD FREE OPTION.
9. THE HIGH TEMPERATURE HOUSING WILL WITHSTAND EXPOSURE TO 260°C PEAK TEMPERATURE FOR 15 SECONDS IN A WAVE SOLDER APPLICATION WITH A 1.5mm IF THEY ARE AVAILABLE.
10. THIS PRODUCT MEETS EUROPEAN UNION DIRECTIVES AND OTHER COUNTRY REGULATION AS DESCRIBED IN GS-22-008.

mat'l. code		surface ISO 1302 ✓		tolerance ISO 406 ISO 1101		projection ⊕-⊖		product family QUICKIE	
ltr	ecn no	dr	date	tolerances unless otherwise specified		title		title	
AQ				angles	linear	MM		QUICKIE SEA-HORSE HEADER VERTICAL	
				0±2'		scale 1:1		dwg no	
				dr	M. CORNMAN	11/25/91	Amphenol FCI		sheet 2 of 5
				chr	M. SMYK	11/25/91			size
				appd	M. SMYK	11/25/91			A3
									type Product Customer Drawing
sheet index	revision sheet								

AFCI CONFIDENTIAL

Amphenol
FCI

This document is the property of and embodies CONFIDENTIAL and PROPRIETARY information of AFCI. No part of the information shown on this document may be used in any way or disclosed to others without the written consent of AFCI.

PRODUCT NO. NOTE 8	SIZE	DIM A	DIM B	DIM C	DIM D	DIM E	LATCHES NOTE 6	STYLE	RETENTIVE HOLES
66373-085 THRU 66373-100	UNAVAILABLE								
66373-101	2x5	1.260/32,000	.400/10,160	.720/18,290	1.100/27,940	.060/1,520	NO	A	YES
-102	2x7	1.460/37,080	.600/15,240	.920/23,370	1.300/33,020			C	
-103	2x8	1.560/39,620	.700/17,780	1.020/25,910	1.400/35,560			D	
-104	2x10	1.760/44,700	.900/22,860	1.220/30,990	1.600/40,640				
-105	2x13	2.060/52,320	1.200/30,480	1.520/38,610	1.900/48,260				
-106	2x17	2.460/62,480	1.600/40,460	1.920/48,770	2.300/58,420				
-107	2x20	2.760/70,100	1.900/48,260	2.220/56,290	2.600/76,040				
-108	2x25	3.260/82,800	2.400/60,960	2.720/69,090	3.100/78,740				
-109	2x30	3.760/95,500	2.900/73,660	3.220/81,790	3.600/91,440		NO	D	
-110	2x5	1.260/32,000	.400/10,160	.720/18,290	1.100/27,940		STD	A	
-111	2x7	1.460/37,080	.600/15,240	.920/23,370	1.300/33,020			C	
-112	2x8	1.560/39,620	.700/17,780	1.020/25,910	1.400/35,560			D	
-113	2x10	1.760/44,700	.900/22,860	1.220/30,990	1.600/40,640				
-114	2x13	2.060/52,320	1.200/30,480	1.520/38,610	1.900/48,260				
-115	2x17	2.460/62,480	1.600/40,460	1.920/48,770	2.300/58,420				
-116	2x20	2.760/70,100	1.900/48,260	2.220/56,290	2.600/76,040				
-117	2x25	3.260/82,800	2.400/60,960	2.720/69,090	3.100/78,740				
-118	2x30	3.760/95,500	2.900/73,660	3.220/81,790	3.600/91,440		STD	D	
-119	2x5	1.260/32,000	.400/10,160	.720/18,290	1.100/27,940		LP	A	
-120	2x7	1.460/37,080	.600/15,240	.920/23,370	1.300/33,020		LP	C	
-121	2x8	1.560/39,620	.700/17,780	1.020/25,910	1.400/35,560	.060/1,520	LP	D	
-122	2x10	1.760/44,700	.900/22,860	1.220/30,990	1.600/40,640	.060/1,520	LP	D	
-123	2x13	2.060/52,320	1.200/30,480	1.520/38,610	1.900/48,260				
-124	2x17	2.460/62,480	1.600/40,460	1.920/48,770	2.300/58,420				
-125	2x20	2.760/70,100	1.900/48,260	2.220/56,290	2.600/76,040				
-126	2x25	3.260/82,800	2.400/60,960	2.720/69,090	3.100/78,740				
-127	2x30	3.760/95,500	2.900/73,660	3.220/81,790	3.600/91,440		LP	D	
-128	2x5	1.260/32,000	.400/10,160	.720/18,290	1.100/27,940		NO	B	
-129	2x5	1.260/32,000	.400/10,160	.720/18,290	1.100/27,940		STD	B	
66373-130	2x5	1.260/32,000	.400/10,160	.720/18,290	1.100/27,940	.060/1,520	LP	B	YES

mat'l. code				surface ISO 1302 <input checked="" type="checkbox"/>		tolerance ISO 406 ISO 1101		projection 		product family QUICKIE			
ltr	ecn no	dr	date	tolerances unless otherwise specified		.X±0.3				title			
AQ				angles	linear	.XX±0.13				QUICKIE SEA-HORSE HEADER VERTICAL			
				0±2'		.XXX±0.051		scale 1:1		dwg no			
				dr	M.CORNMAN	11/25/91		Amphenol FCI		sheet 3 of 5			
				enr	M. SMYK	11/25/91				66373		size A3	
				chr	M. SMYK	11/25/91				type Product Customer Drawing			
				appd	M. SMYK	11/25/91							
sheet index	revision sheet												

AFCI CONFIDENTIAL

AFCI

This document is the property of and embodies CONFIDENTIAL and PROPRIETARY information of AFCI. No part of the information shown on this document may be used in any way or disclosed to others without the written consent of AFCI.

PRODUCT NO. NOTE 8	SIZE	DIM A	DIM B	DIM C	DIM D	DIM E	LATCHES NOTE 6	STYLE	RETENTIVE HOLES
66373-131	2x5	1.260/32,000	.400/10,160	.720/18,290	1.100/27,940	.105/2,670	NO	A	YES
-132	2x7	1.460/37,080	.600/15,240	.920/23,370	1.300/33,020			C	
-133	2x8	1.560/39,620	.700/17,780	1.020/25,910	1.400/35,560			D	
-134	2x10	1.760/44,700	.900/22,860	1.220/30,990	1.600/40,640			D	
-135	2x13	2.060/52,320	1.200/30,480	1.520/38,610	1.900/48,260			D	
-136	2x17	2.460/62,480	1.600/40,460	1.920/48,770	2.300/58,420		NO	D	
-137	2x20	2.760/70,100	1.900/48,260	2.220/56,290	2.600/76,040		NO	D	
-138	2x25	3.260/82,800	2.400/60,960	2.720/69,090	3.100/78,740		NO	D	
-139	2x30	3.760/95,500	2.900/73,660	3.220/81,790	3.600/91,440		NO	D	
-140	2x5	1.260/32,000	.400/10,160	.720/18,290	1.100/27,940		STD	A	
-141	2x7	1.460/37,080	.600/15,240	.920/23,370	1.300/33,020			C	
-142	2x8	1.560/39,620	.700/17,780	1.020/25,910	1.400/35,560			D	
-143	2x10	1.760/44,700	.900/22,860	1.220/30,990	1.600/40,640				
-144	2x13	2.060/52,320	1.200/30,480	1.520/38,610	1.900/48,260				
-145	2x17	2.460/62,480	1.600/40,460	1.920/48,770	2.300/58,420				
-146	2x20	2.760/70,100	1.900/48,260	2.220/56,290	2.600/76,040				
-147	2x25	3.260/82,800	2.400/60,960	2.720/69,090	3.100/78,740				
-148	2x30	3.760/95,500	2.900/73,660	3.220/81,790	3.600/91,440		STD	D	
-149	2x5	1.260/32,000	.400/10,160	.720/18,290	1.100/27,940		LP	A	
-150	2x7	1.460/37,080	.600/15,240	.920/23,370	1.300/33,020			C	
-151	2x8	1.560/39,620	.700/17,780	1.020/25,910	1.400/35,560			D	
-152	2x10	1.760/44,700	.900/22,860	1.220/30,990	1.600/40,640				
-153	2x13	2.060/52,320	1.200/30,480	1.520/38,610	1.900/48,260				
-154	2x17	2.460/62,480	1.600/40,460	1.920/48,770	2.300/58,420				
-155	2x20	2.760/70,100	1.900/48,260	2.220/56,290	2.600/76,040				
-156	2x25	3.260/82,800	2.400/60,960	2.720/69,090	3.100/78,740				
-157	2x30	3.760/95,500	2.900/73,660	3.220/81,790	3.600/91,440	.105/2,670	LP	D	
-158	2x5	1.260/32,000	.400/10,160	.720/18,290	1.100/27,940	.105/2,670	NO	B	
-159	2x5	1.260/32,000	.400/10,160	.720/18,290	1.100/27,940	.105/2,670	STD	B	
-160	2x5	1.260/32,000	.400/10,160	.720/18,290	1.100/27,940	.105/2,670	LP	B	
-161	2x18	2.560/65,020	1.700/43,180	2.020/51,310	2.400/60,960	.060/1,520	NO	D	
-162						.060/1,520	STD		
-163						.060/1,520	LP		
-164						.105/2,670	NO		
-165						.105/2,670	STD		
66373-166	2x18	2.560/65,020	1.700/43,180	2.020/51,310	2.400/60,960	.105/2,670	LP	D	YES

mat'l. code		surface ISO 1302 <input checked="" type="checkbox"/> ISO 406 ISO 1101		tolerance ISO 406 ISO 1101		projection 		product family QUICKIE		
ltr	ecn no	dr	date	tolerances unless otherwise specified		title		title		
AQ				angles	linear	MM		QUICKIE SEA-HORSE HEADER VERTICAL		
				0±2'		scale 1:1		dwg no sheet 4 of 5 size		
				dr	M.CORNMAN	11/25/91	Amphenol FCI		66373 A3	
				chr	M. SMYK	11/25/91			type Product Customer Drawing	
				appd	M. SMYK	11/25/91				
sheet index	revision sheet									

AFCI CONFIDENTIAL

Amphenol
FCI

This document is the property of and embodies CONFIDENTIAL and PROPRIETARY information of AFCI. No part of the information shown on this document may be used in any way or disclosed to others without the written consent of AFCI.

PRODUCT NO. NOTE 8	SIZE	DIM A	DIM B	DIM C	DIM D	DIM E	LATCHES NOTE 6	STYLE	RETENTIVE HOLES
66373-167	2x12	1.960/49,780	1.100/27.940	1.420/36.070	1.800/45.720	.060/1,520	NO	D	YES
-168	2x15	2.260/57,400	1.400/35.560	1.720/43.690	2.100/53.340	.060/1,520			
-169	2x22	2.960/75,180	2.100/53.340	2.420/61.470	2.800/71.120	.060/1,520			
-170	2x12	1.960/49,780	1.100/27.940	1.420/36.070	1.800/45.720	.105/2,670			
-171	2x15	2.260/57,400	1.400/35.560	1.720/43.690	2.100/53.340	.105/2,670			
-172	2x22	2.960/75,180	2.100/53.340	2.420/61.470	2.800/71.120	.105/2,670	NO		
-173	2x12	1.960/49,780	1.100/27.940	1.420/36.070	1.800/45.720	.060/1,520	STD		
-174	2x15	2.260/57,400	1.400/35.560	1.720/43.690	2.100/53.340	.060/1,520			
-175	2x22	2.960/75,180	2.100/53.340	2.420/61.470	2.800/71.120	.060/1,520			
-176	2x12	1.960/49,780	1.100/27.940	1.420/36.070	1.800/45.720	.105/2,670			
-177	2x15	2.260/57,400	1.400/35.560	1.720/43.690	2.100/53.340	.105/2,670			
-178	2x22	2.960/75,180	2.100/53.340	2.420/61.470	2.800/71.120	.105/2,670	STD		
-179	2x12	1.960/49,780	1.100/27.940	1.420/36.070	1.800/45.720	.060/1,520	LP		
-180	2x15	2.260/57,400	1.400/35.560	1.720/43.690	2.100/53.340	.060/1,520			
-181	2x22	2.960/75,180	2.100/53.340	2.420/61.470	2.800/71.120	.060/1,520			
-182	2x12	1.960/49,780	1.100/27.940	1.420/36.070	1.800/45.720	.105/2,670			
-183	2x15	2.260/57,400	1.400/35.560	1.720/43.690	2.100/53.340	.105/2,670			
-184	2x22	2.960/75,180	2.100/53.340	2.420/61.470	2.800/71.120	.105/2,670	LP	D	YES
-201	2x5	1.260/32.00	.400/10.16	.720/18.29	1.100/27.94	.060/1,520	NO	A	NO
-204	2x10	1.760/44.70	.900/22.86	1.220/30.99	1.600/40.64	.060/1,520	NO	D	NO
-206	2x17	2.460/62.48	1.600/40.46	1.920/48.77	2.300/58.42	.060/1,520	NO	D	NO
-210	2x5	1.260/32.00	.400/10.16	.720/18.29	1.100/27.94	.060/1,520	STD	A	NO
-236	2x17	2.460/62.48	1.600/40.46	1.920/48.77	2.300/58.42	.105/2,670	NO	D	NO
66373-245	2x17	2.460/62.48	1.600/40.46	1.920/48.77	2.300/58.42	.105/2,670	STD	D	NO

mat'l. code		surface ISO 1302 <input checked="" type="checkbox"/>		tolerance ISO 406 ISO 1101		projection 		product family QUICKIE		
ltr	ecn no	dr	date	tolerances unless otherwise specified		MM		title QUICKIE SEA-HORSE HEADER VERTICAL		
AQ				angles	linear	scale 1:1		dwg no		
				0±2'				sheet 5 of 5		
				dr	M.CORNMAN	11/25/91	Amphenol FCI		size	
				enr	M. SMYK	11/25/91			A3	
				chr	M. SMYK	11/25/91				
				appd	M. SMYK	11/25/91			type Product Customer Drawing	
sheet index	revision sheet									