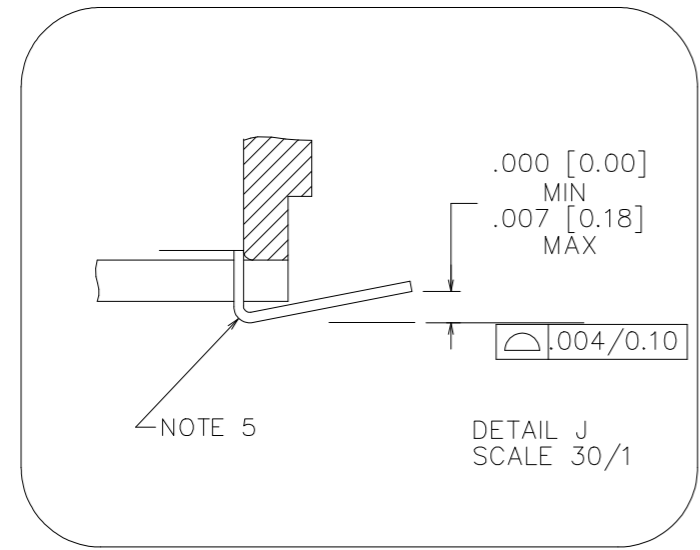
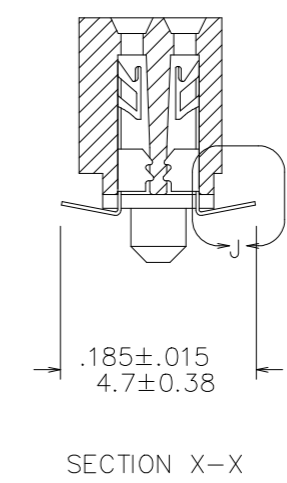
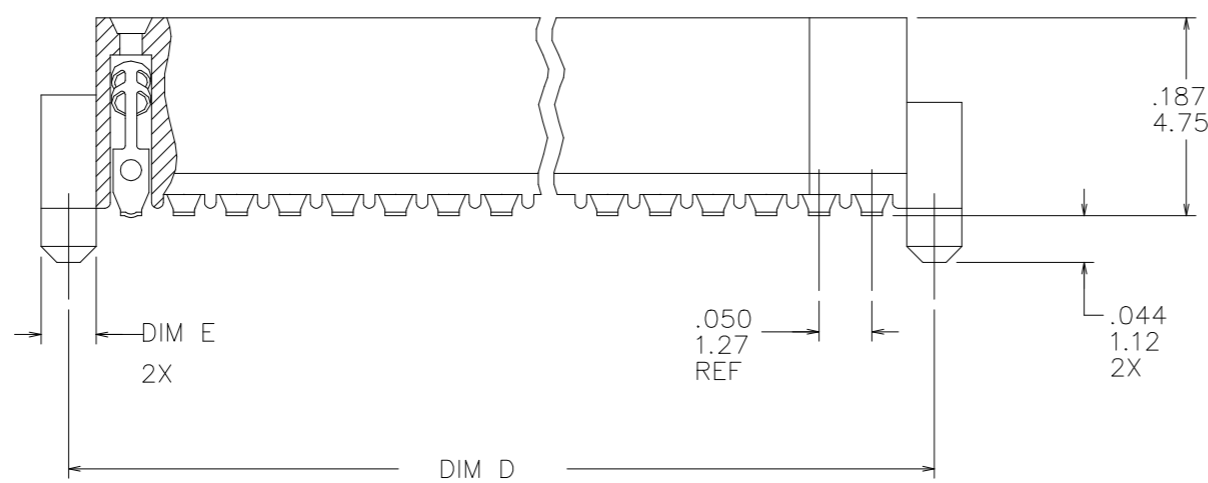
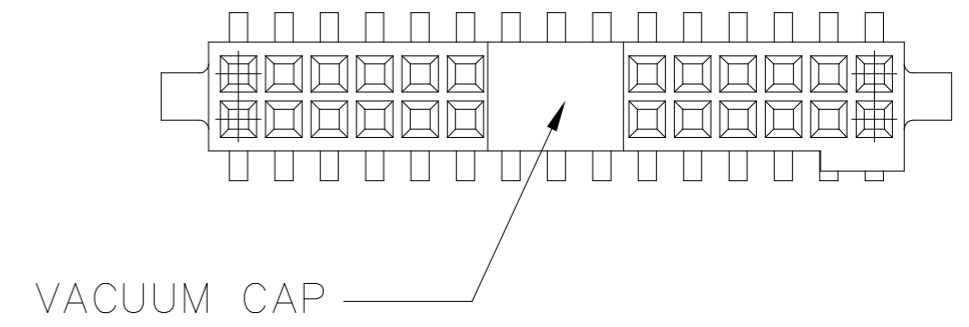
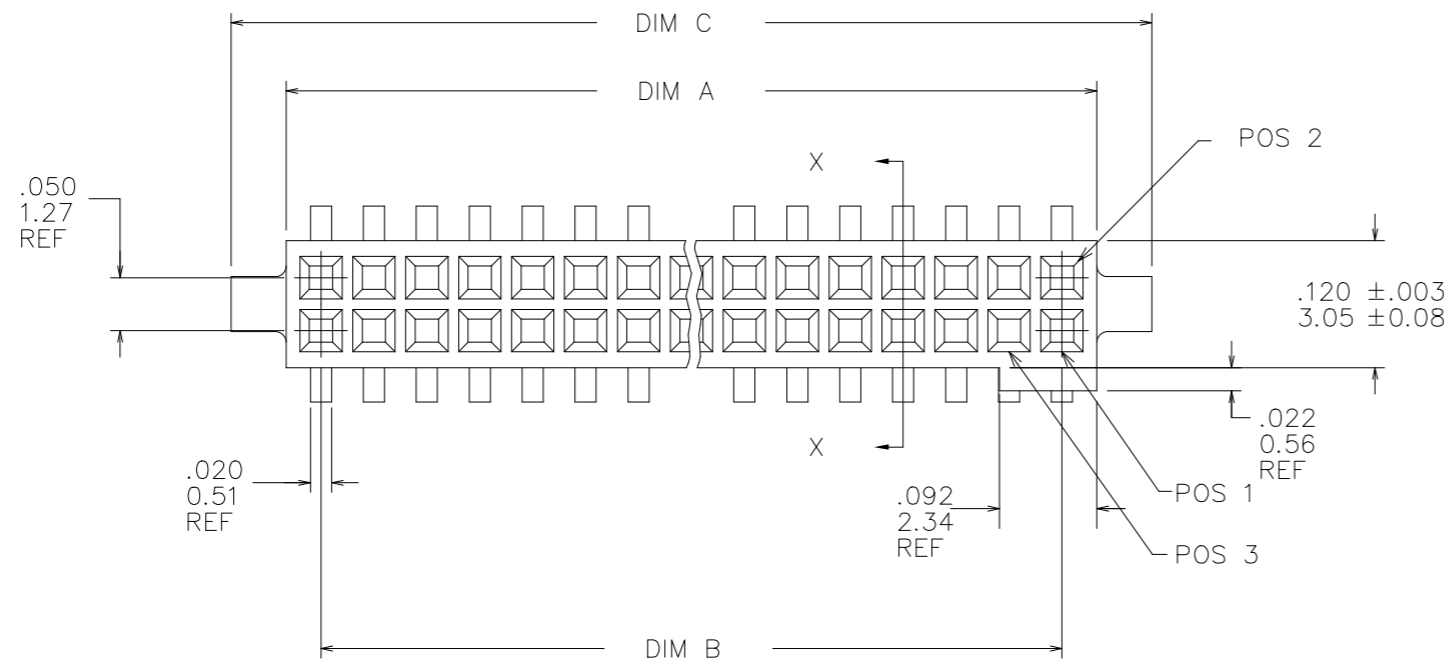


PRODUCT NUMBER
SEE TABLE



mat'l. code		surface		tolerance		projection		product family	
-		ISO 1302 ✓		ISO 406 ISO 1101				RIB CAGE	
ltr	ecn no	dr	date	tolerances unless otherwise specified				title	
AH	ELX-N-19819	JH	12/22/14	angles	linear			.050cc VERT. SMT.	
AJ	ELX-N-39694	MX	12/21/20					W/LOC. & POL. FEATURE	
AK	ELX-N-48911	AN	08/03/23	0±2'		scale 1:1			
AD	M09-0058	CMR	4/06/09	dr	M. CLOUSER	6/26/91		dwg no	
AE	M09-0071	MHT	4/30/09	enr	B. BARUFFALO	6/26/91		sheet 1 of 3	
AF	N10-0174	YOH	6/17/10	chr	B. BARUFFALO	6/26/91		size	
AG	ELX-N-010202	YO	2/8/12	app	B. BARUFFALO	6/26/91		A3	
sheet	revision	AK						type	
index	sheet	2						Product Customer Drawing	

PRODUCT NO. NOTE 9	SIZE	DIM A	DIM B	DIM C	DIM D	DIM E	SPECIAL PACKAGING	TAPE WIDTH		PIECES PER REEL
									PITCH	
87024-605	2 X 5	.266/6.756	.200/5.08	.370/9.398	.3200/8.128	∅.0520 /1.321	NOTE 6	24mm	12mm	750
-610	2 X 10	.516/13.106	.450/11.43	.620/15.748	.5700/14.478	∅.0520 /1.321	NOTE 6	24mm	12mm	750
-610P	2 X 10	.516/13.106	.450/11.43	.620/15.748	.5700/14.478	∅.0520 /1.321	NOTE 8	24mm	16mm	400
-615	2 X 15	.766/19.456	.700/17.78	.870/22.098	.8200/20.828	∅.0520 /1.321	NOTE 6	44mm	12mm	500
-620	2 X 20	1.016/25.806	.950/24.13	1.120/28.448	1.0700/27.178	∅.0520 /1.321	NOTE 6 & 7	44mm	12mm	500
-625	2 X 25	1.266/32.156	1.200/30.48	1.370/34.798	1.3200/33.528	∅.0520 /1.321	NOTE 6	56mm	12mm	500
-630	2 X 30	1.516/38.506	1.450/36.83	1.620/41.148	1.5700/39.878	∅.0520 /1.321	NOTE 6 & 7	56mm	12mm	500
-635	2 X 35	1.766/44.856	1.700/43.18	1.870/47.498	1.8200/46.228	∅.0520 /1.321	NOTE 6	72mm	12mm	500
-640	2 X 40	2.016/51.206	1.950/49.53	2.120/53.848	2.0700/52.578	∅.0520 /1.321	NOTE 6 & 7	72mm	12mm	500
-645	2 X 45	2.266/57.556	2.200/55.88	2.370/60.198	2.3200/58.928	∅.0520 /1.321	NOTE 6	72mm	12mm	500
-650	2 X 50	2.516/63.906	2.450/62.23	2.620/66.548	2.5700/65.278	∅.0520 /1.321	NOTE 6 & 7	88mm	12mm	500
-610S	2 X 10	.516/13.106	.450/11.43	.620/15.748	.5700/14.478	∅.0394 /1.00	NOTE 6	24mm	12mm	750
-625S	2 X 25	1.266/32.156	1.200/30.48	1.370/34.798	1.3200/33.528	∅.0394 /1.00	NOTE 6	56mm	12mm	500

NOTES:

- HOUSING MATERIAL:
LCP GLASS FILLED FLAME RETARDANT PER UL 94V-0
COLOR: NATURAL
- TERMINAL MATERIAL: BeCu
- TERMINAL PLATING:
30u"/.76um MIN HARD GOLD OR GXT OVER Ni ON CONTACT ZONES,
100u"/2.54um MIN TIN OVER Ni IN SOLDERING ZONES,
OTHERWISE GOLD FLASH OR UNPLATED.
- APPLICATION INFORMATION:
A. RECOMMENDED MOUNTING PAD PATTERN IS
SHOWN IN FIGURE "A".
B. MATING PINS TO BE .0176/0.447 TO .0181/0.459 DIA.
C. MATING PIN TIPS TO BE IN TRUE POSITION TO MATING
GRID WITHIN .006/0.15 DIA.
D. SUGGESTED MATING PIN LENGTH .130/3.30
±.010/0.25.
- LEAD TIPS TO BE ABOVE HEEL, UP TO .007/0.18 MAX.
COPLANARITY TO BE MEASURED AT LOWEST POINT (HEEL).
- IF LF P/N THE PRODUCT MEETS EUROPEAN UNION DIRECTIVES AND OTHER
COUNTRY REGULATION AS DESCRIBED IN GS-22-008.
- THE HOUSING WILL WITHSTAND EXPOSURE TO 260°C PEAK TEMPERATURE
FOR 20 SECONDS IN A CONVECTION, INFRA-RED OR VAPOR PHASE REFLOW
OVEN. SEE APPLICATION NOTES/PROCEDURES IF THEY ARE AVAILABLE.
- PRODUCT SPEC PER BUS-12-087.
- PN DEFINE:
87024-605XXXLF
LEAD FREE
WITH "TR": TAPE AND REEL+CAP
WITH "CT": TUPE+CAP
WITHOUT "TR" OR "CT": TUPE, NO CAP
WITH "P": THE CARRIER'S PITCH IS 16MM
WITHOUT "P": THE CARRIER'S PITCH IS 12MM
WITH "S": THE POST'S DIAMETER IS 1.00MM, FOR FIGURE B
WITHOUT "S": THE POST'S DIAMETER IS 1.321MM, FOR FIGURE A

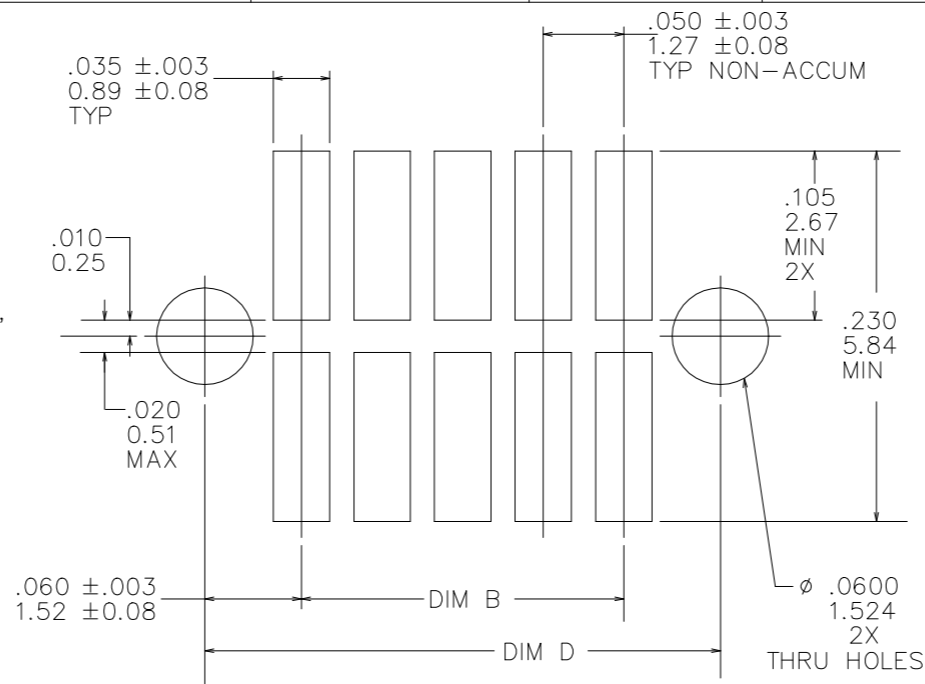


FIGURE A
RECOMMENDED
P.C.B. LAYOUT

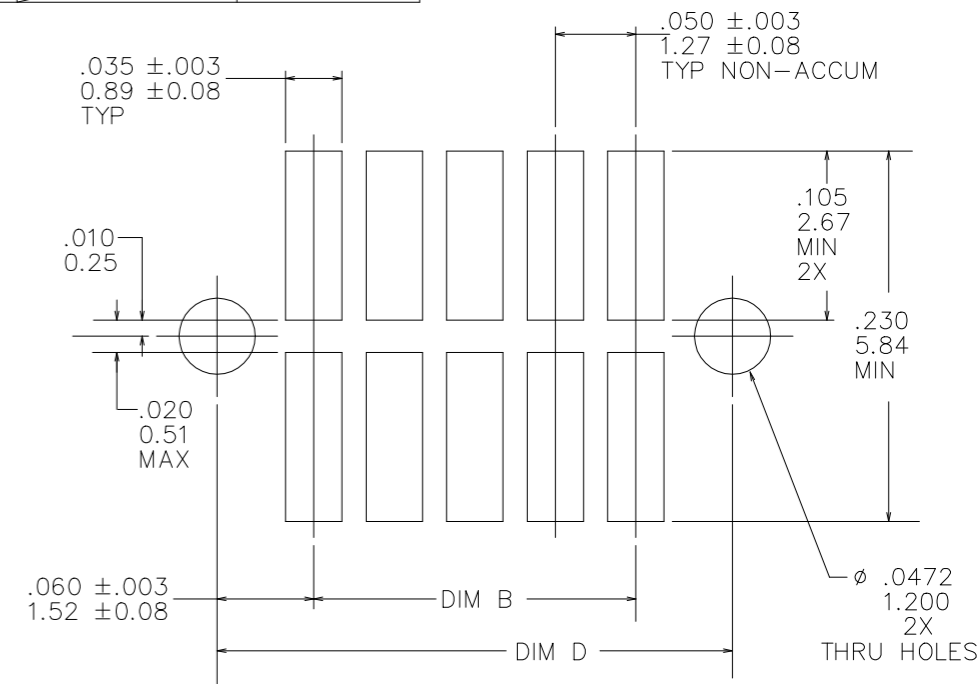


FIGURE B
RECOMMENDED
P.C.B. LAYOUT

mat'l. code		surface		tolerance		projection		product family	
-		ISO 1302 ✓		ISO 406 ISO 1101		INCH/MM		RIB CAGE	
ltr	ecn no	dr	date	tolerances unless otherwise specified		scale 1:1		title	
AK				angles	linear			.050cc VERT. SMT. W/LOC. & POL. FEATURE	
				0±2'	XXX±.005/XX±0.13 XXXX±.0020/XXX±0.051			dwg no	
				dr	M. CLOUSER	6/26/91	sheet 2 of 3		size
				enrg	B. BARUFFALO	6/26/91	87024		A3
				chr	B. BARUFFALO	6/26/91	type		Product Customer Drawing
				appd	B. BARUFFALO	6/26/91			
sheet	revision								
index	sheet								

1

2 3

4

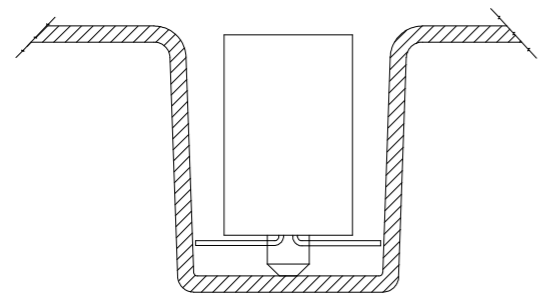
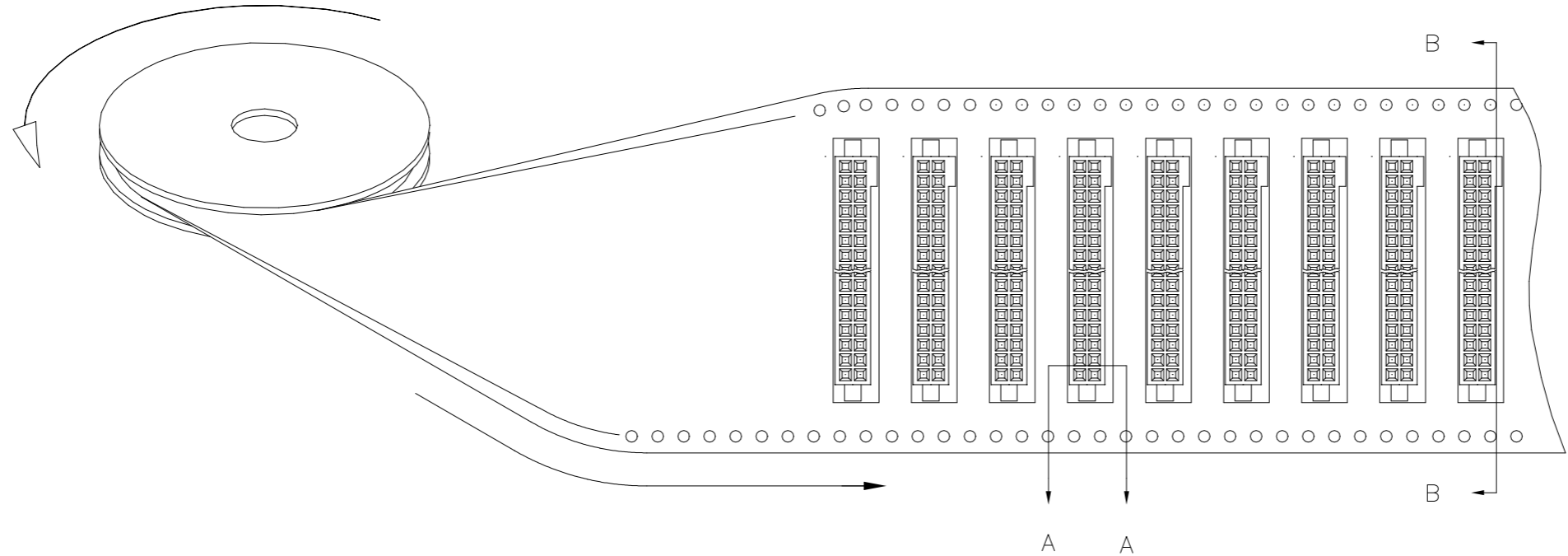
5

6

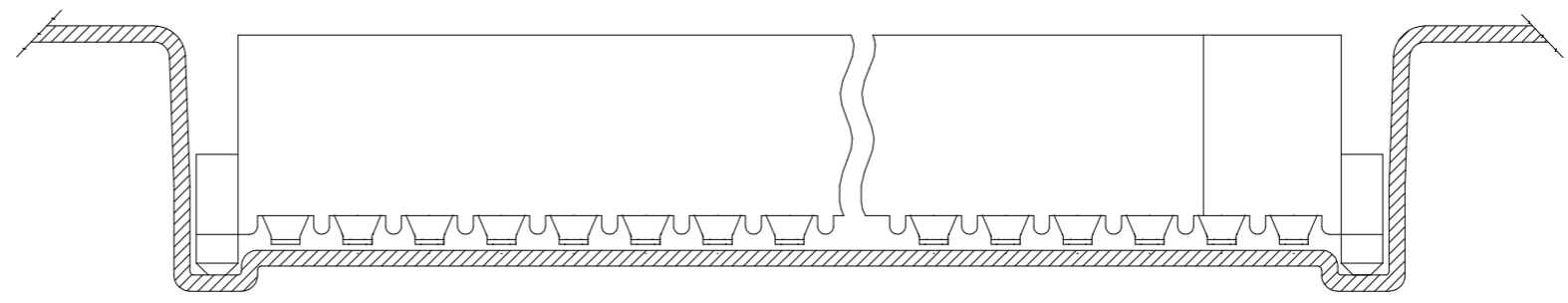
REFERENCE ONLY

TAPE WIDTH'S 32mm AND ABOVE HAS BOTH FEED TRACKS,
BELOW 32mm HAS TOP FEED TRACK ONLY.

UNREELING
DIRECTION



SECTION A-A



SECTION B-B



Copyright FCI

mat'l. code		surface		tolerance		projection		product family		
-		ISO 1302 ✓		ISO 406 ISO 1101				RIB CAGE		
ltr	ecn no	dr	date	tolerances unless otherwise specified		INCH/MM		title		
AK				angles	linear	$XX \pm .01 / X \pm 0.3$ $XXX \pm .005 / XX \pm 0.13$ $XXXX \pm .0020 / XXX \pm 0.051$.050cc VERT. SMT. W/LOC. & POL. FEATURE		
				0°±2'		scale 1:1		dwg no		
				dr	M. CLOUSER	6/26/91			sheet 3 of 3	
				enr	B. BARUFFALO	6/26/91			87024	A3
				chr	B. BARUFFALO	6/26/91			type Product Customer Drawing	
				app	B. BARUFFALO	6/26/91				
sheet index	revision sheet									

1

2

5

6